



Sony Cyber-shot DSC-TX100V OLED/LCD Assembly Replacement

This guide will teach you how to replace the Sony Cyber-shot DSC-TX100V OLED/LCD Screen.

Written By: Tim





TOOLS:

- [Phillips #0 Screwdriver](#) (1)
-

Step 1 — OLED/LCD Assembly



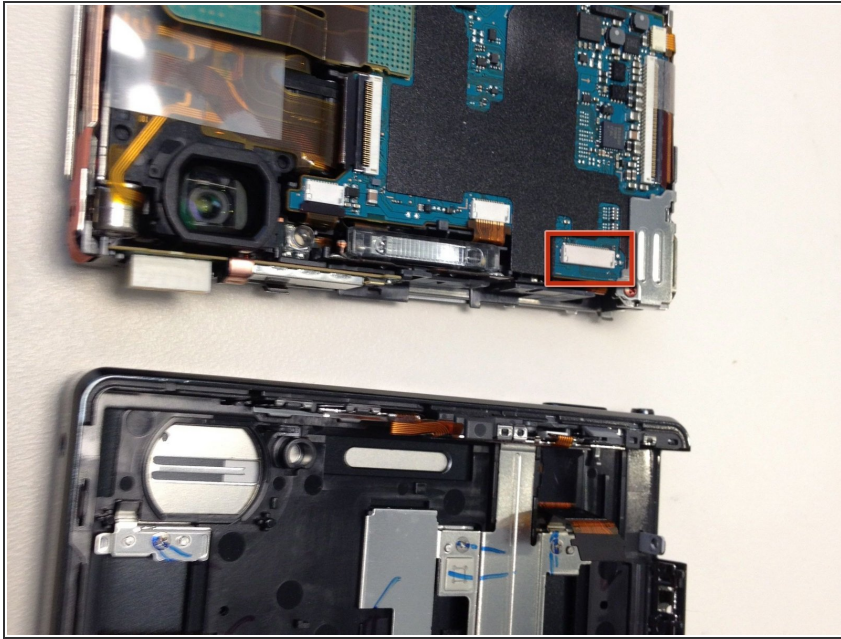
- Remove the battery
- Remove the five 2.5mm Philips #0 screws.
- Remove the one 2.5mm Philips #0 screw inside the HDMI case.

Step 2



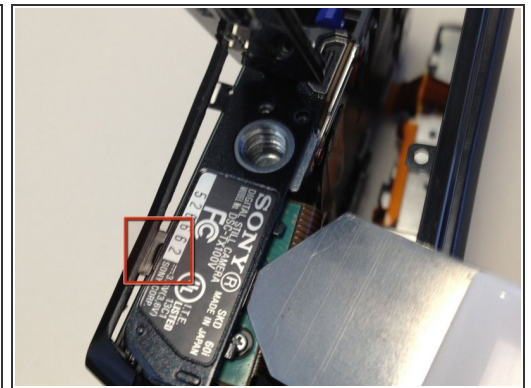
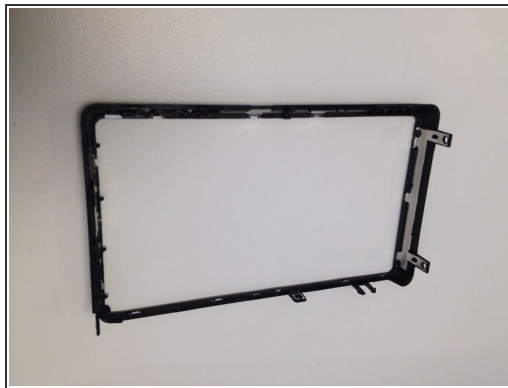
- Gently work and pull the front cover off of the camera

Step 3



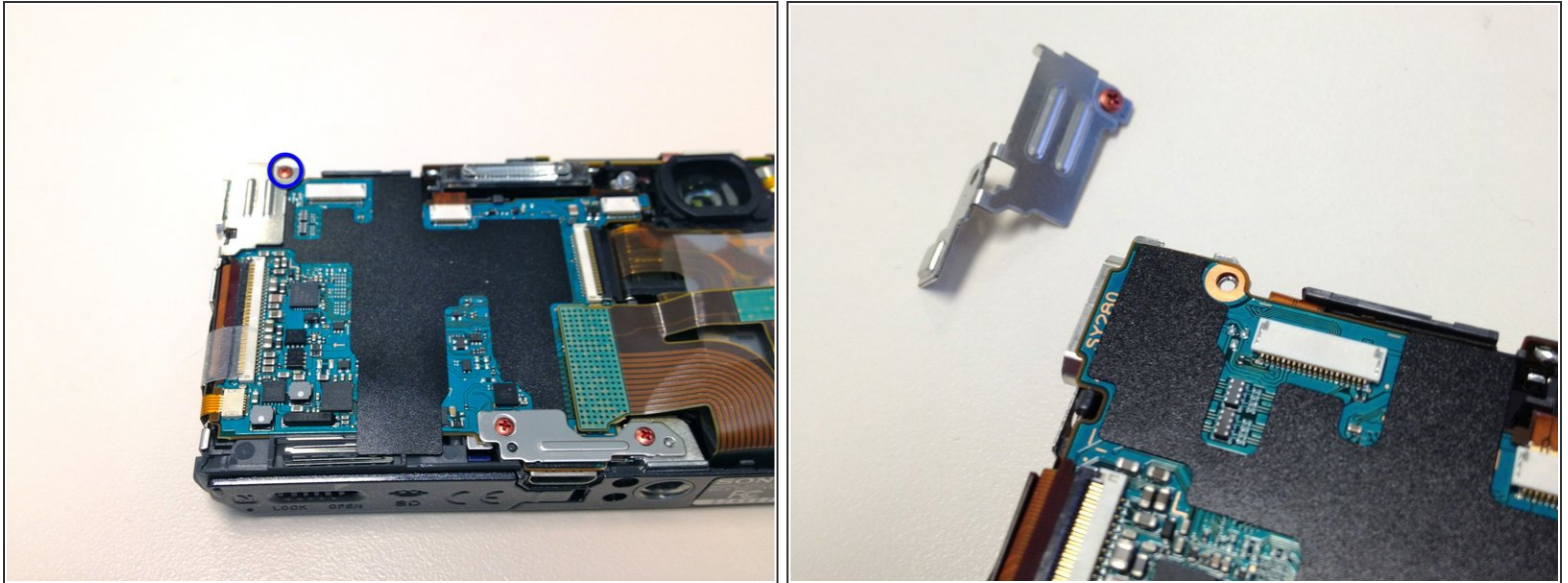
- Gently pull and disconnect the ribbon cable connecting the front cover to the main body

Step 4



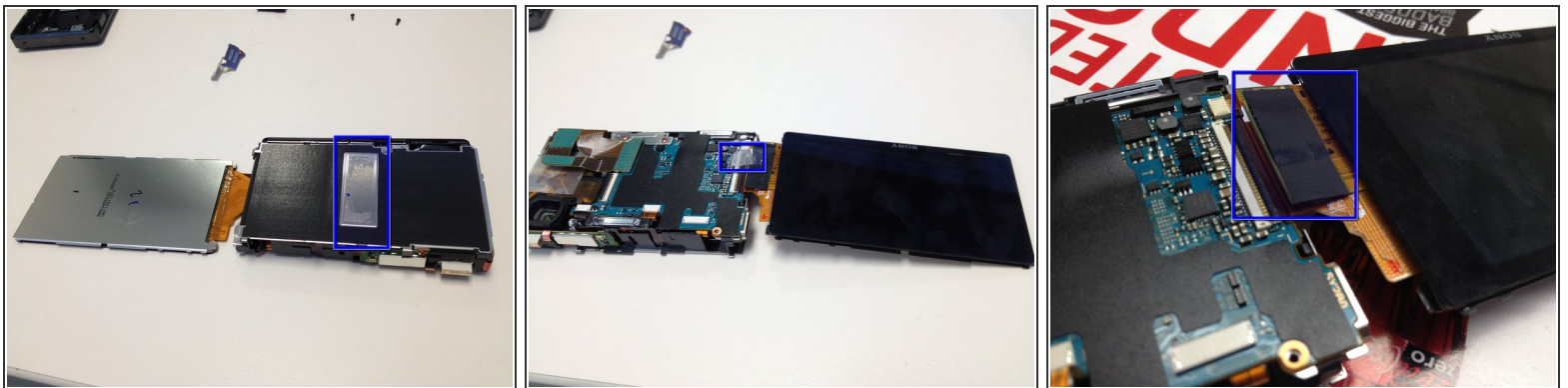
- Using an [iSesamo Opening Tool](#), Spudger, or flat dull opening tool, gently pry off the cover of the OLED/LCD assembly.
- Take care of the tab/clip at the bottom, it can be a little tricky.
- [iSesamo Opening Tool](#) is highly recommended

Step 5



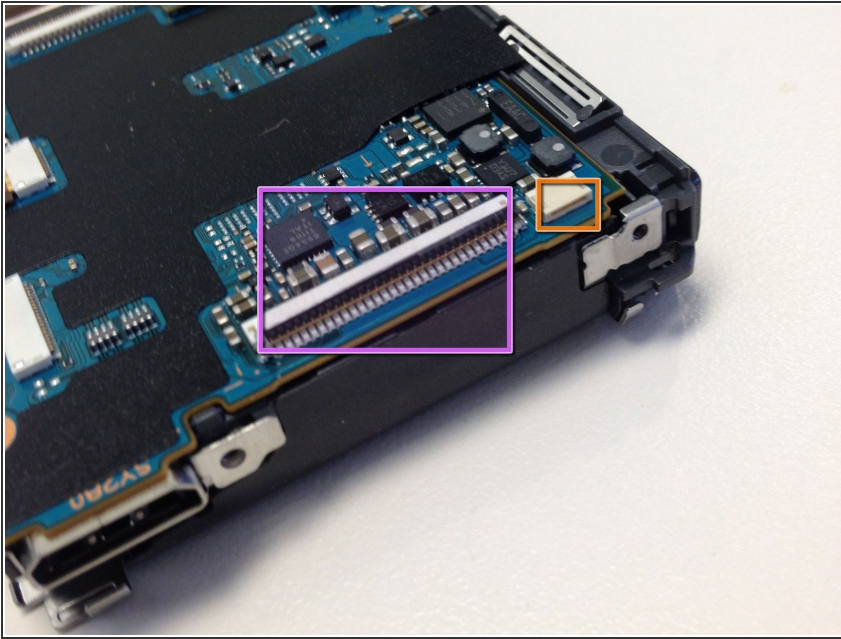
- Remove the copper phillips screw holding the HDMI mounting plate and detach the mounting plate.

Step 6



- Using an [iSesamo Opening Tool](#), Spudger, or flat dull opening tool, gently pry the OLED/LCD assembly from the adhesive strip on the main body.
 - **Note:** where the adhesive strip is located.
- Turn the device over and remove the clear tape and black tape.
 - **Important:** Save the clear and black tape, they will be used for the replacement unit.

Step 7



- Gently pull the small flat ribbon cable from the main body
- In order to disconnect the large flat ribbon cable, you need to flip up the black ribbon clamp located on the main body where the socket is located

Step 8



- Reattach new display, and reconnect all components
- Test camera to ensure the new screen is working
- **Congrats!**

To reassemble your device, follow these instructions in reverse order.