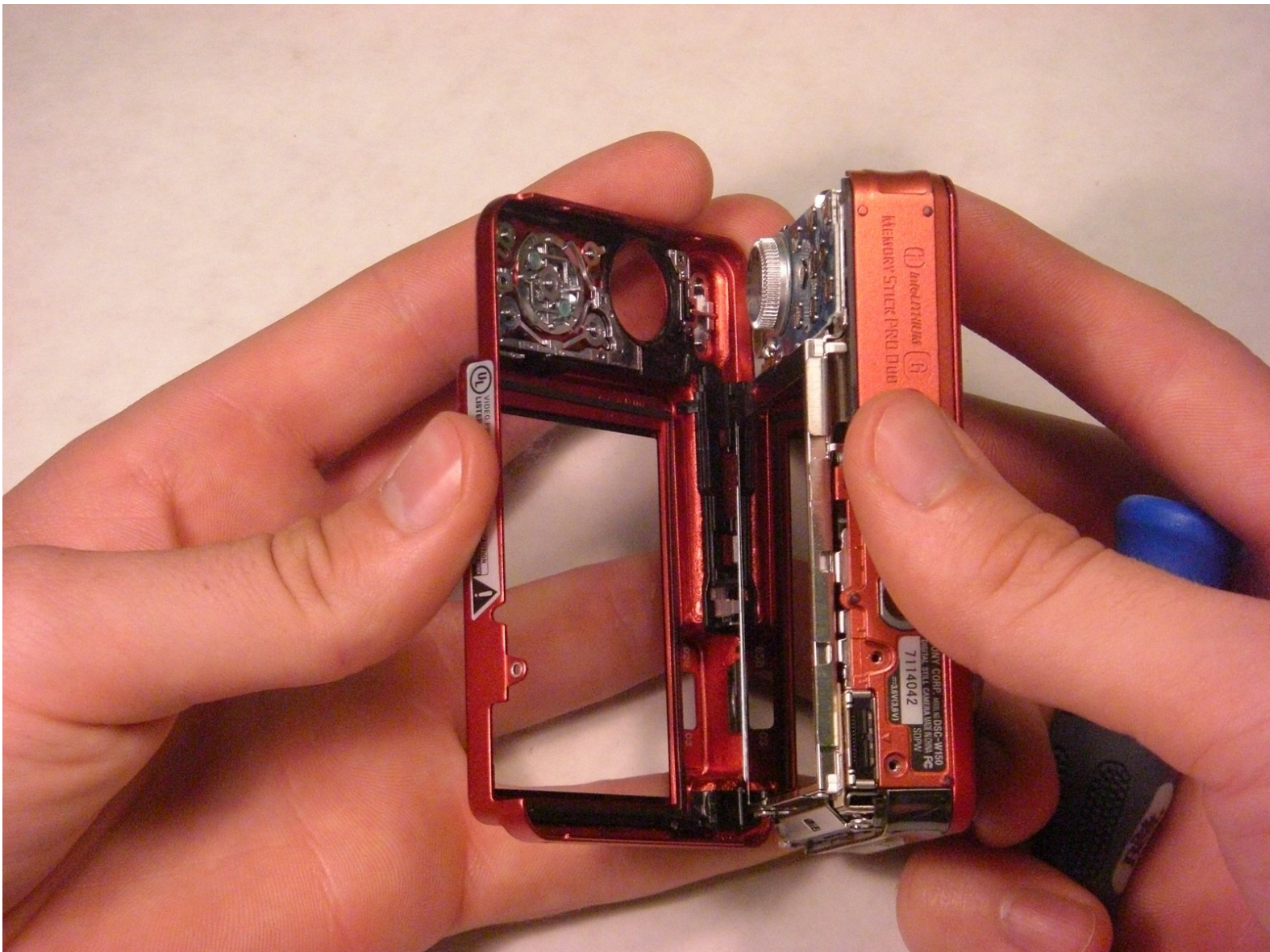




# Sony Cyber-shot DSC-W150 Back Casing Replacement

Written By: iRobot



---

## INTRODUCTION

This repair guide will aid you in the steps to disassemble the Sony Cyber-shot DSC W150 in order to replace a scratched or broken back casing.



### TOOLS:

- [Phillips #0 Screwdriver](#) (1)
-

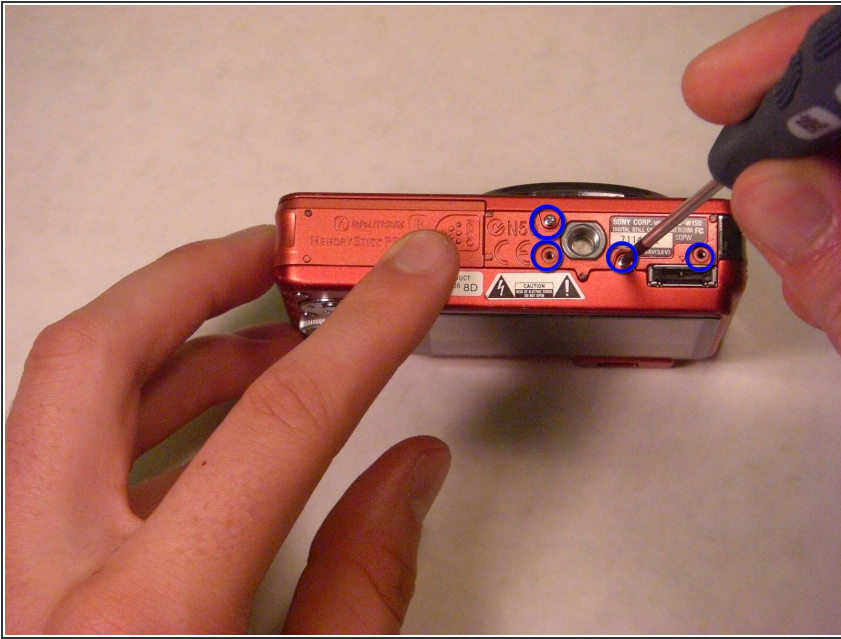
## Step 1 — Back Casing



**⚠ The screws from the camera are extremely small so it is a good idea to have a small container to hold all the screws as you remove them.**

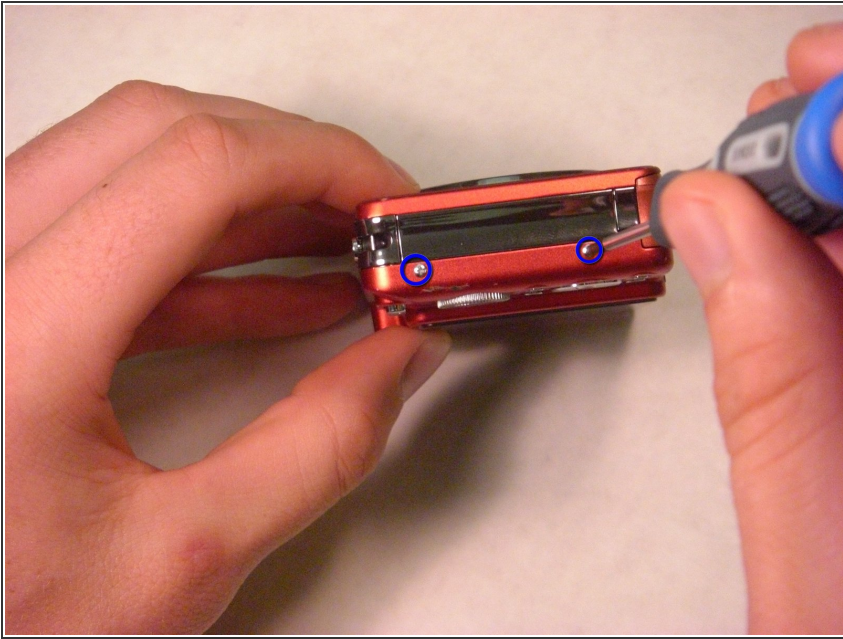


## Step 2



- Take your screwdriver and remove the bottom screws of the camera. (The picture shows the lens facing away from you and the LCD facing you.) There should be four silver screws.

### Step 3



- On the right side of the camera, remove the two screws using the screwdriver. There will be two silver screws. (The picture shows the lens facing away from you and LCD screen facing you.)

## Step 4



- On the left side of the camera, remove the two screws using the screwdriver. There will be two silver screws. (The picture shows the lens facing away from you and the LCD screen facing you.)

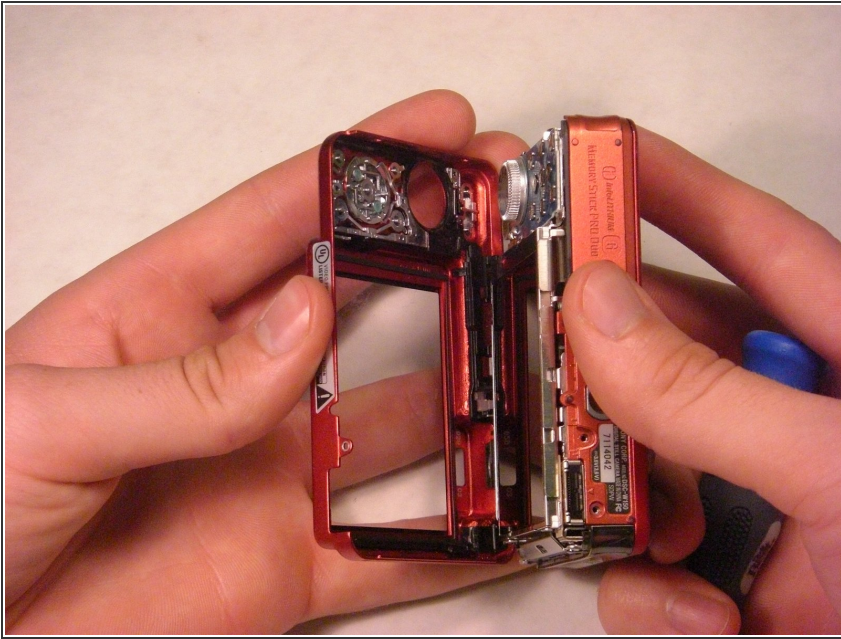
## Step 5



- Gently remove the back casing by holding onto both sides of the camera and pulling them apart.



## Step 6



- Now, carefully pull off the back cover.

## Step 7



- The two halves of the camera casing should now be separate.

To reassemble your device, follow these instructions in reverse order.