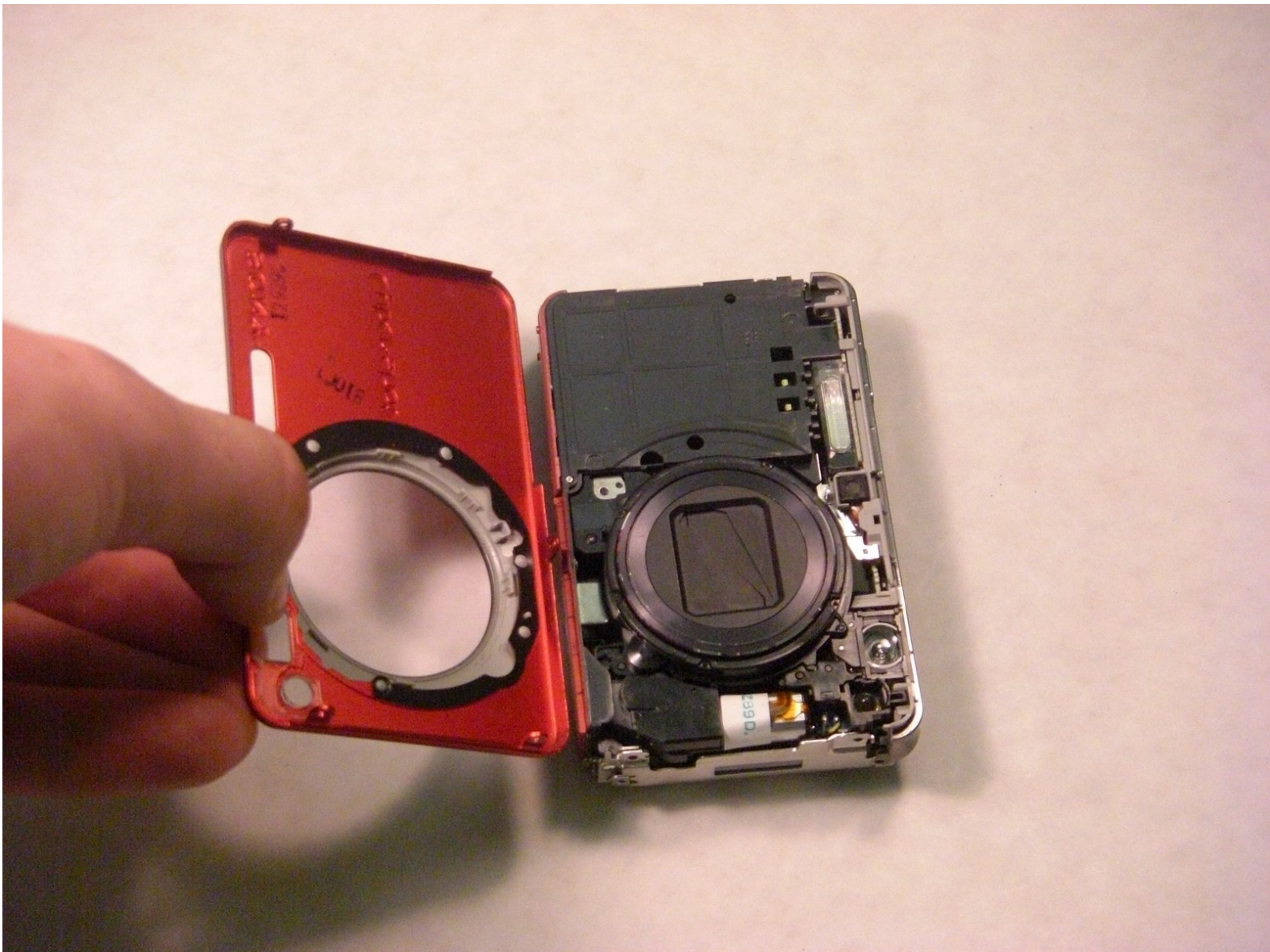




Sony Cyber-shot DSC-W150 Front Casing Replacement

Written By: Julio Maravilla



INTRODUCTION

This page will guide you through the removal of the front casing on the Sony Cyber-shot DSC W150.



TOOLS:

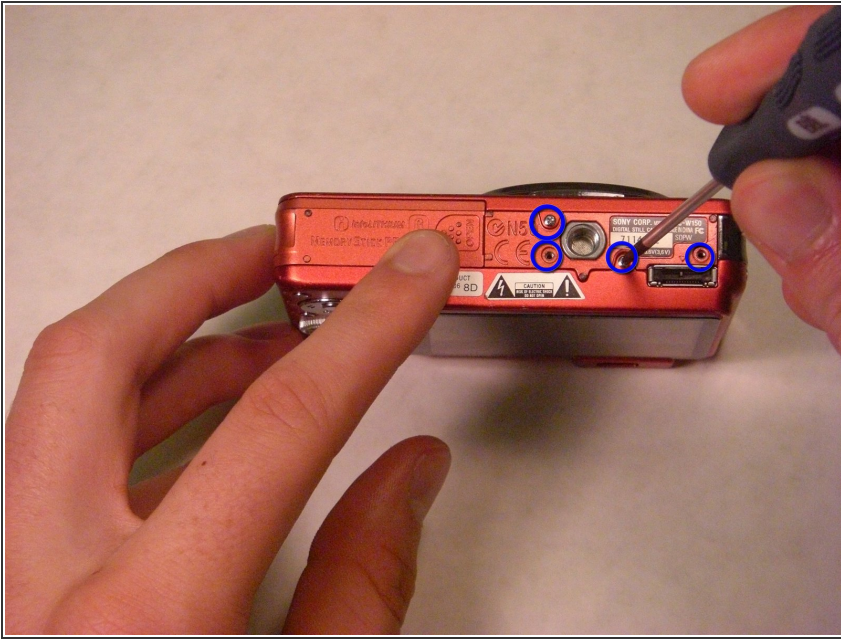
- [Phillips #0 Screwdriver](#) (1)
-

Step 1 — Back Casing



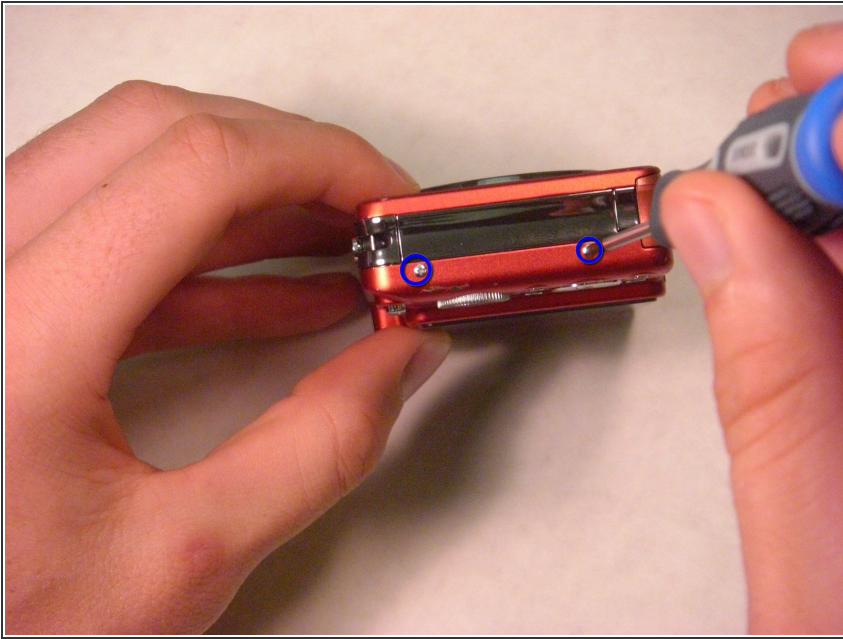
⚠ The screws from the camera are extremely small so it is a good idea to have a small container to hold all the screws as you remove them.

Step 2



- Take your screwdriver and remove the bottom screws of the camera. (The picture shows the lens facing away from you and the LCD facing you.) There should be four silver screws.

Step 3



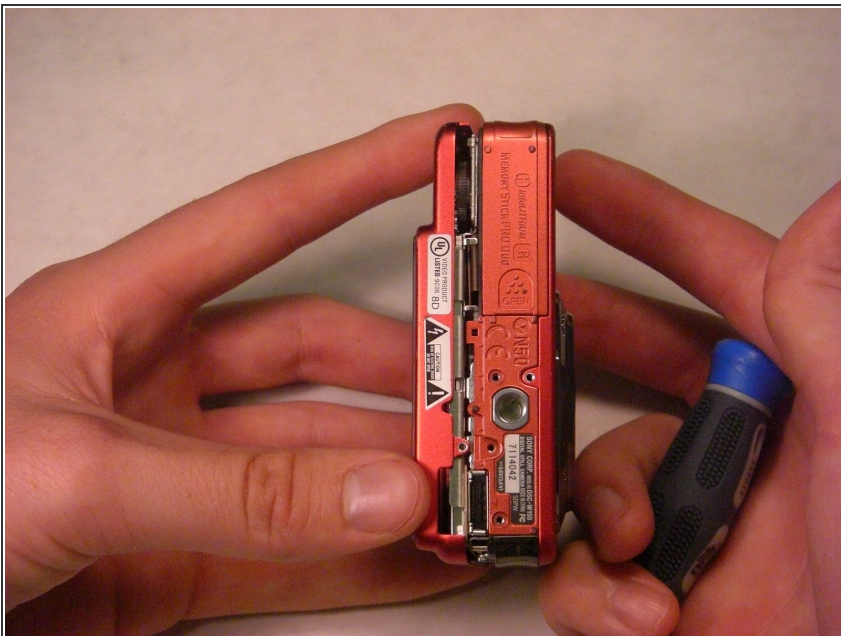
- On the right side of the camera, remove the two screws using the screwdriver. There will be two silver screws. (The picture shows the lens facing away from you and LCD screen facing you.)

Step 4



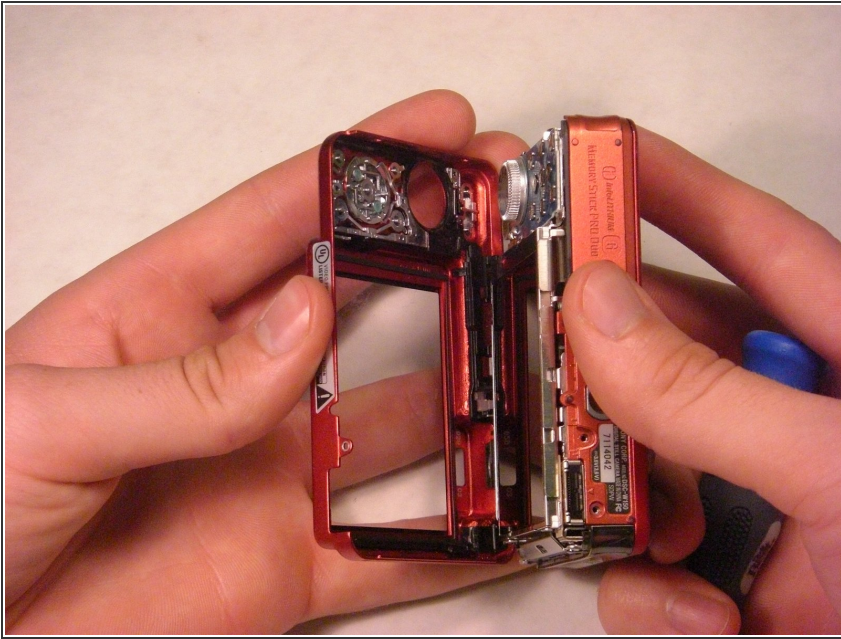
- On the left side of the camera, remove the two screws using the screwdriver. There will be two silver screws. (The picture shows the lens facing away from you and the LCD screen facing you.)

Step 5



- Gently remove the back casing by holding onto both sides of the camera and pulling them apart.

Step 6



- Now, carefully pull off the back cover.

Step 7



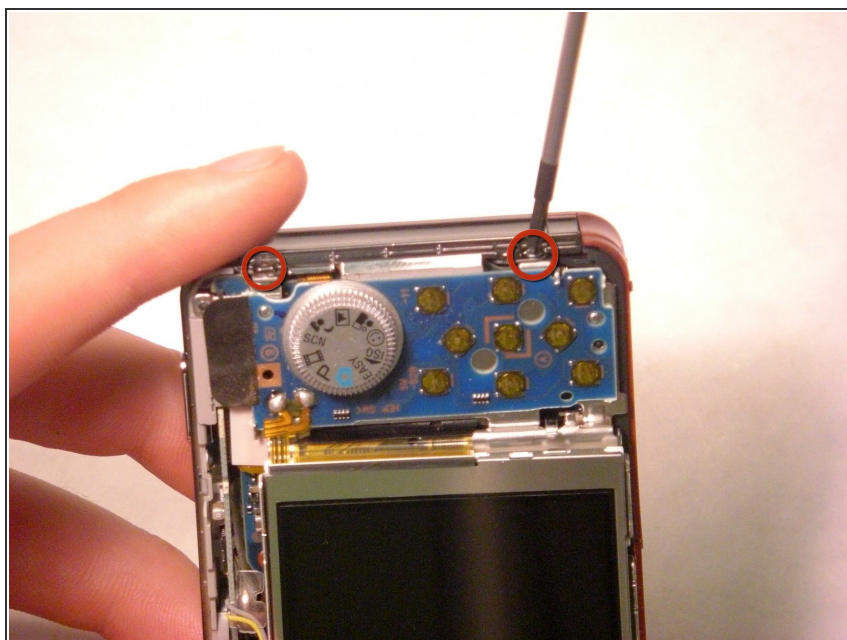
- The two halves of the camera casing should now be separate.

Step 8 — Front Casing



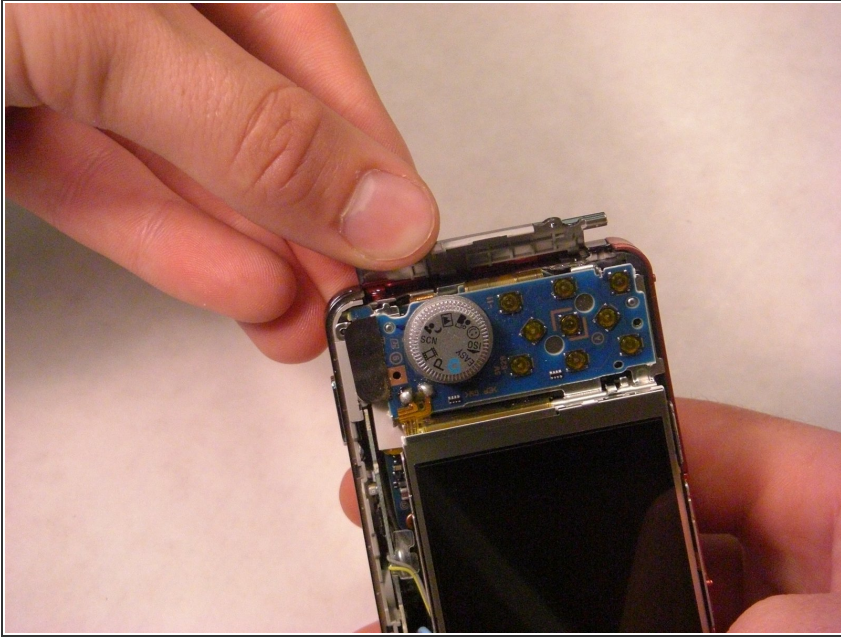
- ✦ Keep track of the small screws that you remove.
- ⚠ Opening, removing and/or replacing the front casing may void your manufacturers warranty

Step 9



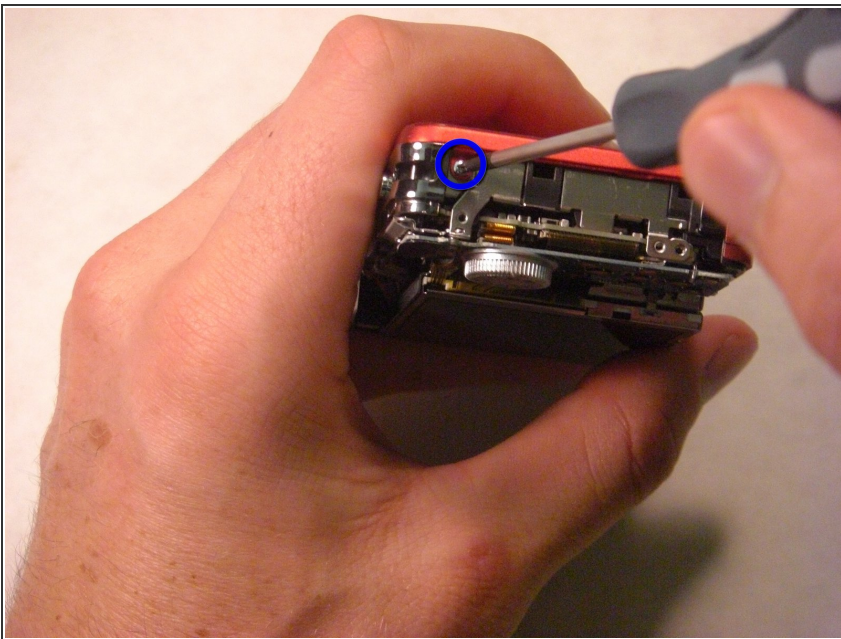
- Remove the two screws at the top of the camera casing.

Step 10



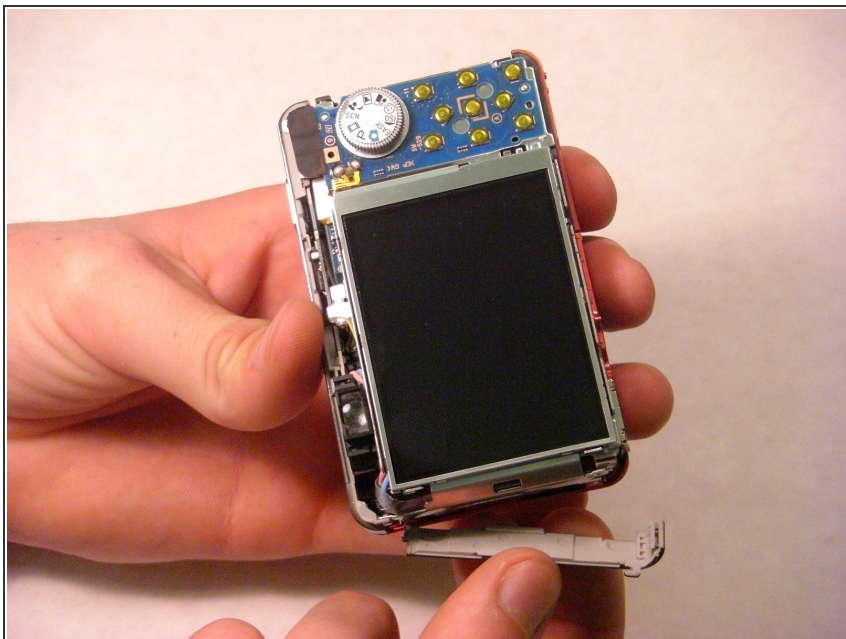
- Gently pop open the plastic piece as shown.

Step 11



- Remove the screw connecting the front casing to the electrical components as shown.

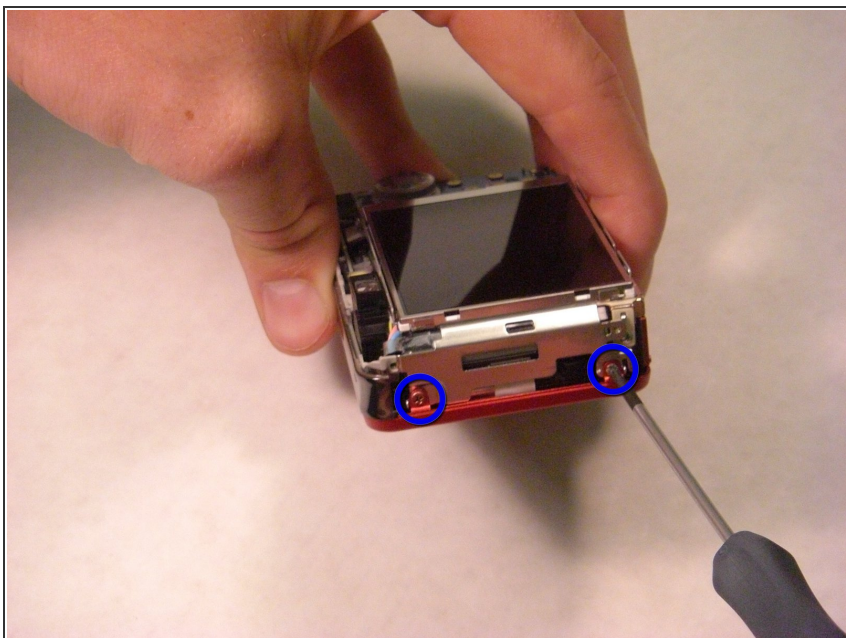
Step 12



- Gently loosen and remove the side casing by firmly pulling with your fingers.

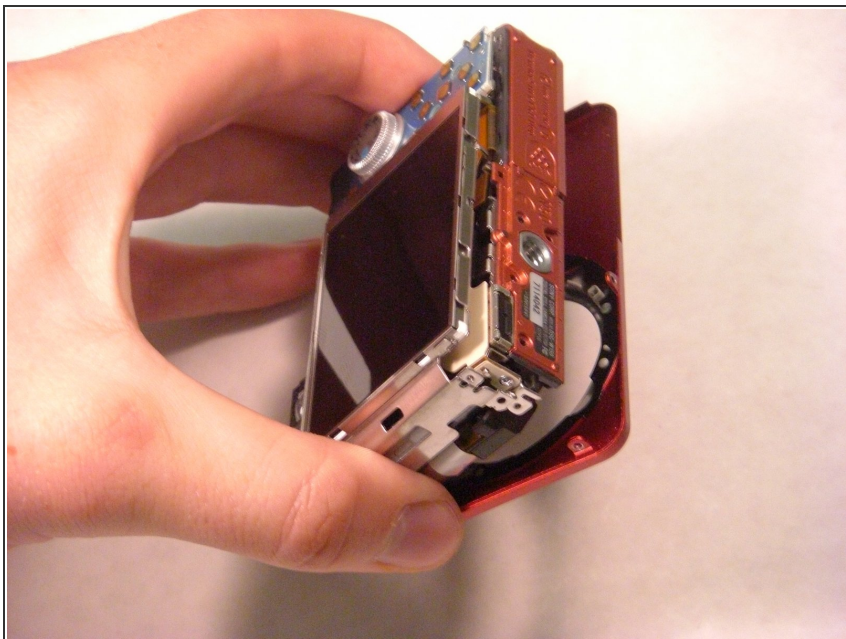
⚠ Take care not to break the fragile part or to scratch the LCD screen.

Step 13



- Remove the two screws connecting the front casing to the electrical components.

Step 14



- Gently loosen the front casing.

⚠ Be careful not to scratch any of the exposed electrical components.

Step 15



- Fully remove the front casing from the camera.

To reassemble your device, follow these instructions in reverse order.