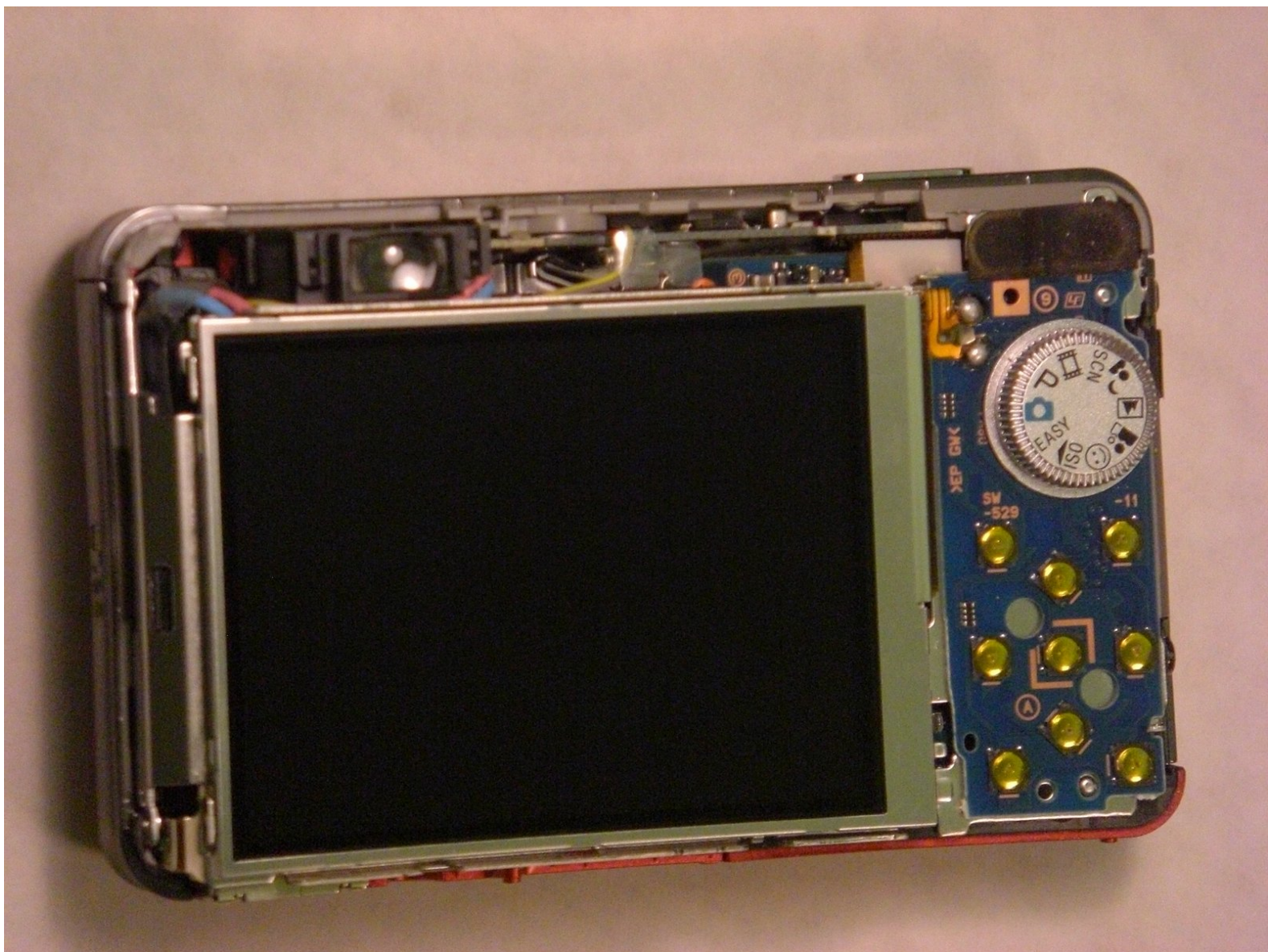




Sony Cyber-shot DSC-W150 LCD Screen Replacement

Written By: Brent Clavin



INTRODUCTION

Replacing a defective LCD screen.



TOOLS:

- [Tweezers](#) (1)
- [Phillips #00 Screwdriver](#) (1)
- [Spudger](#) (1)
- [Soldering Workstation](#) (1)



PARTS:

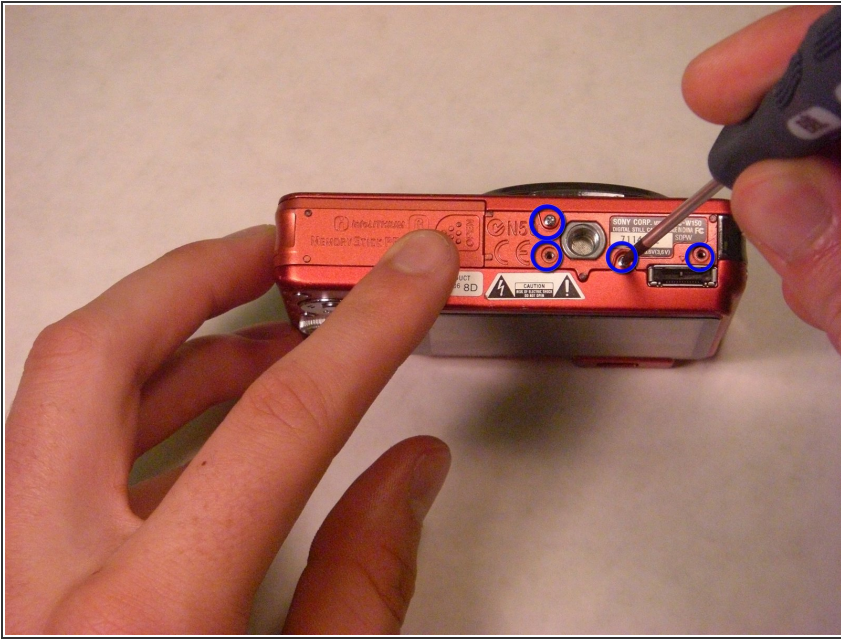
- [Sony Cyber-shot DSC W150 2.7" LCD screen](#) (1)

Step 1 — Back Casing



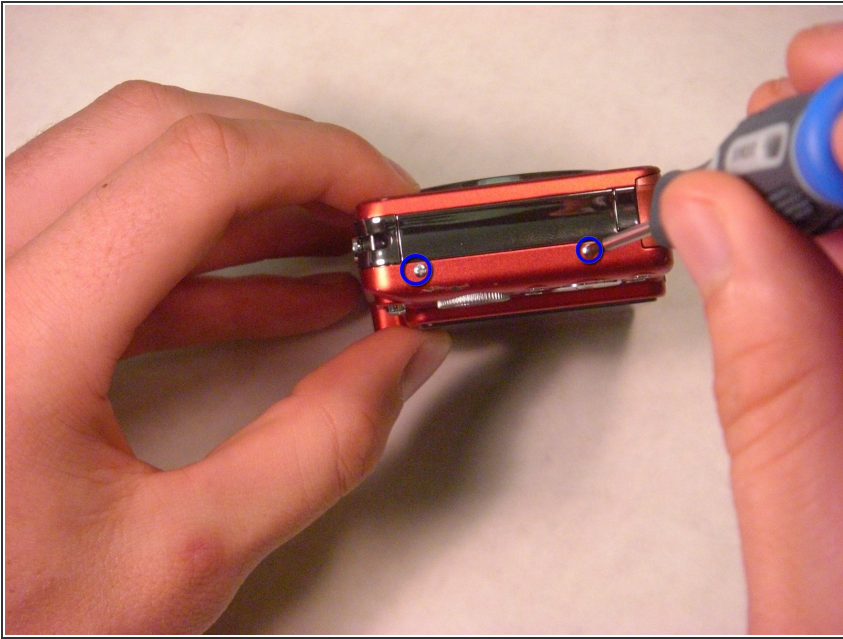
⚠ The screws from the camera are extremely small so it is a good idea to have a small container to hold all the screws as you remove them.

Step 2



- Take your screwdriver and remove the bottom screws of the camera. (The picture shows the lens facing away from you and the LCD facing you.) There should be four silver screws.

Step 3



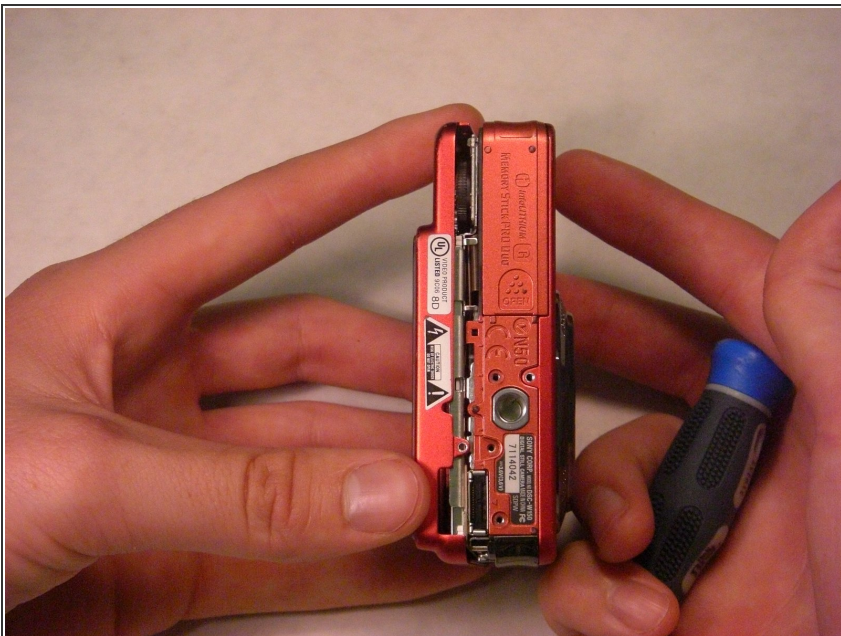
- On the right side of the camera, remove the two screws using the screwdriver. There will be two silver screws. (The picture shows the lens facing away from you and LCD screen facing you.)

Step 4



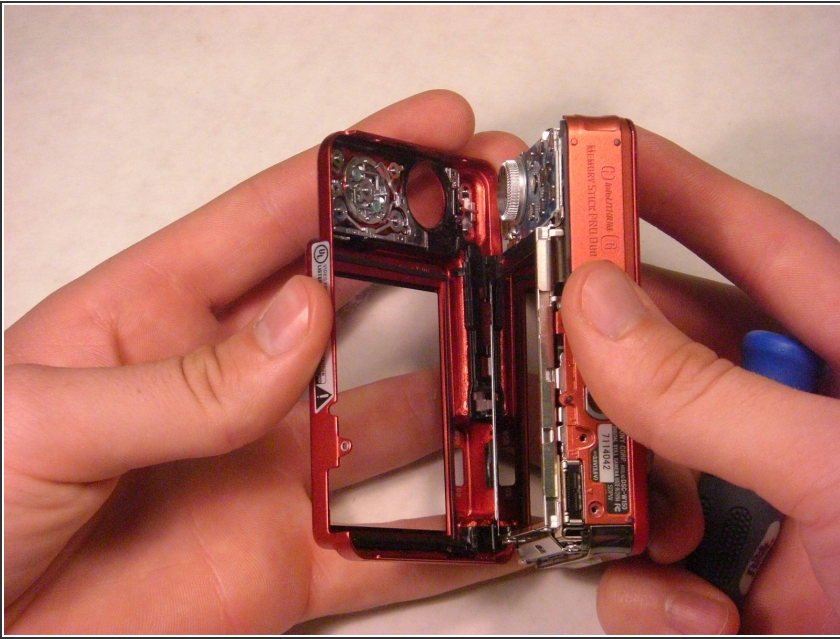
- On the left side of the camera, remove the two screws using the screwdriver. There will be two silver screws. (The picture shows the lens facing away from you and the LCD screen facing you.)

Step 5



- Gently remove the back casing by holding onto both sides of the camera and pulling them apart.

Step 6



- Now, carefully pull off the back cover.

Step 7



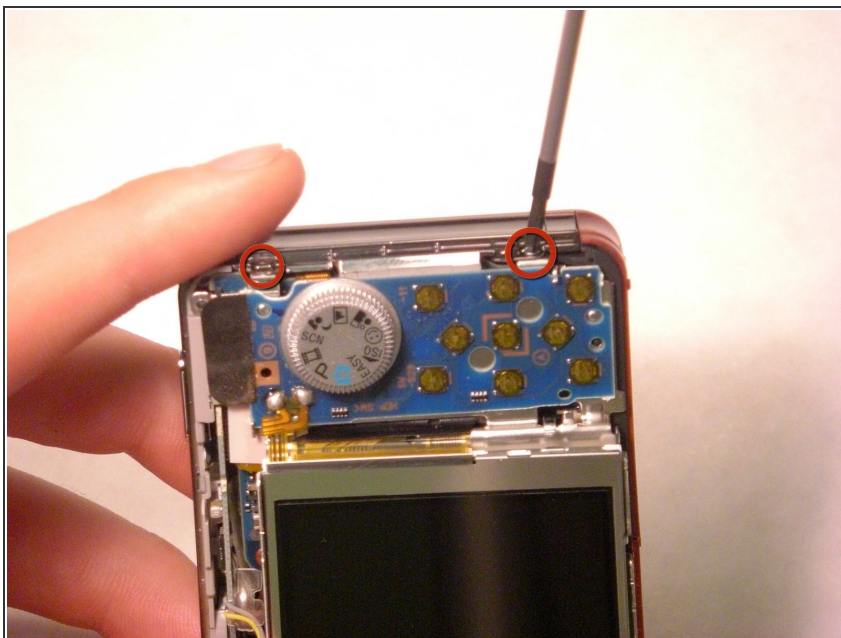
- The two halves of the camera casing should now be separate.

Step 8 — Front Casing



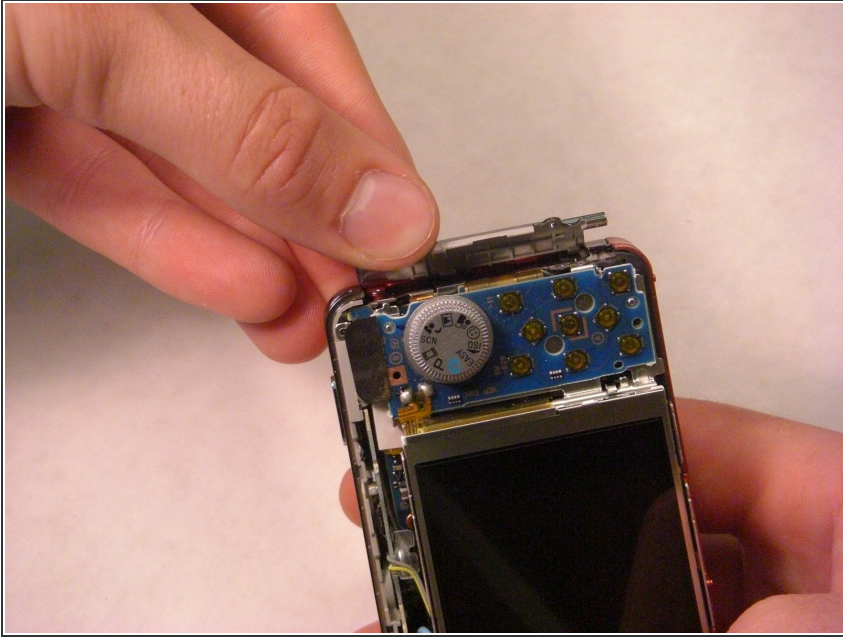
- ✦ Keep track of the small screws that you remove.
- ⚠ Opening, removing and/or replacing the front casing may void your manufacturers warranty

Step 9



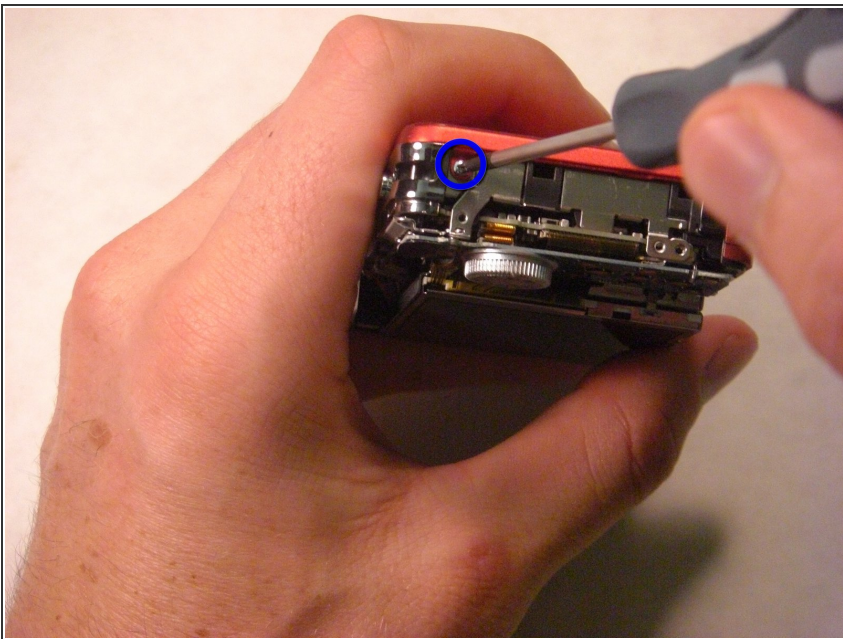
- Remove the two screws at the top of the camera casing.

Step 10



- Gently pop open the plastic piece as shown.

Step 11



- Remove the screw connecting the front casing to the electrical components as shown.

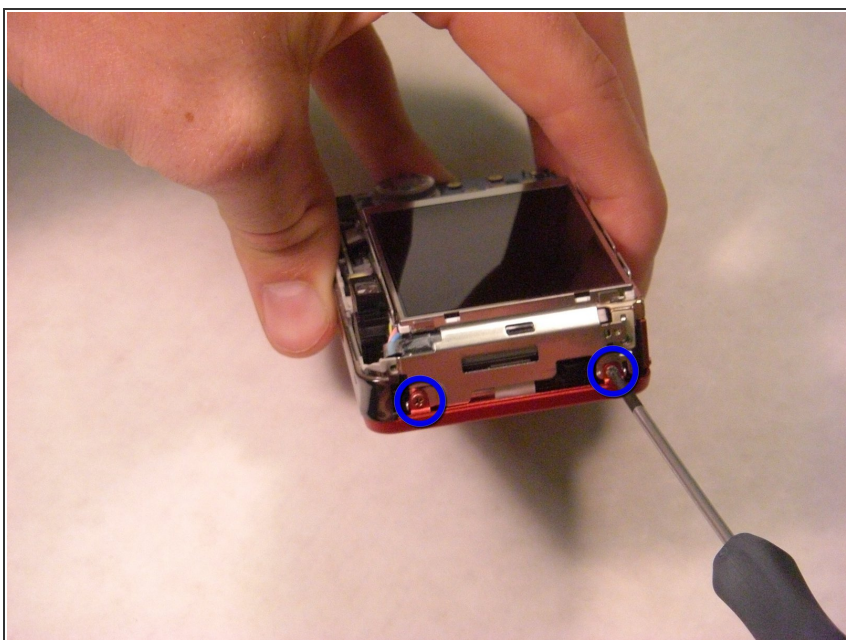
Step 12



- Gently loosen and remove the side casing by firmly pulling with your fingers.

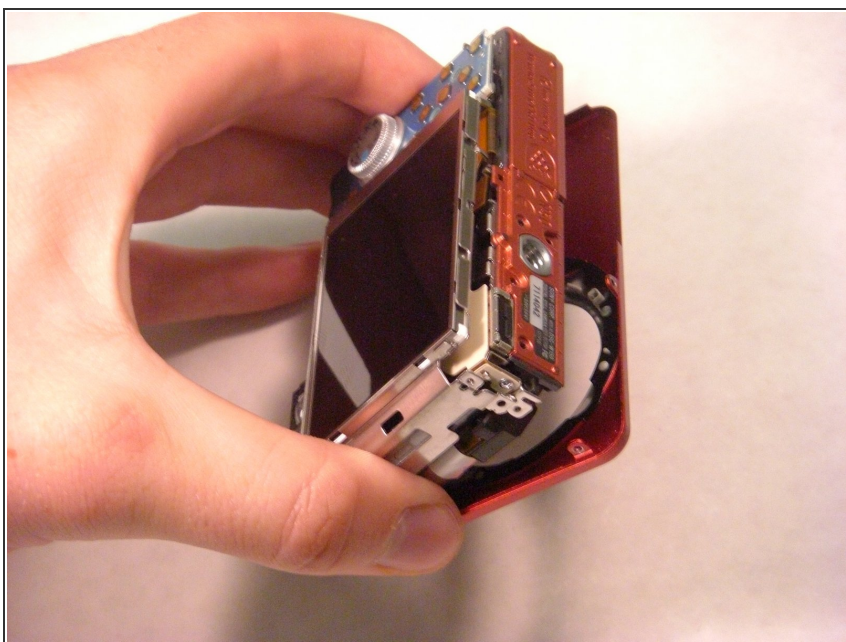
⚠ Take care not to break the fragile part or to scratch the LCD screen.

Step 13



- Remove the two screws connecting the front casing to the electrical components.

Step 14



- Gently loosen the front casing.

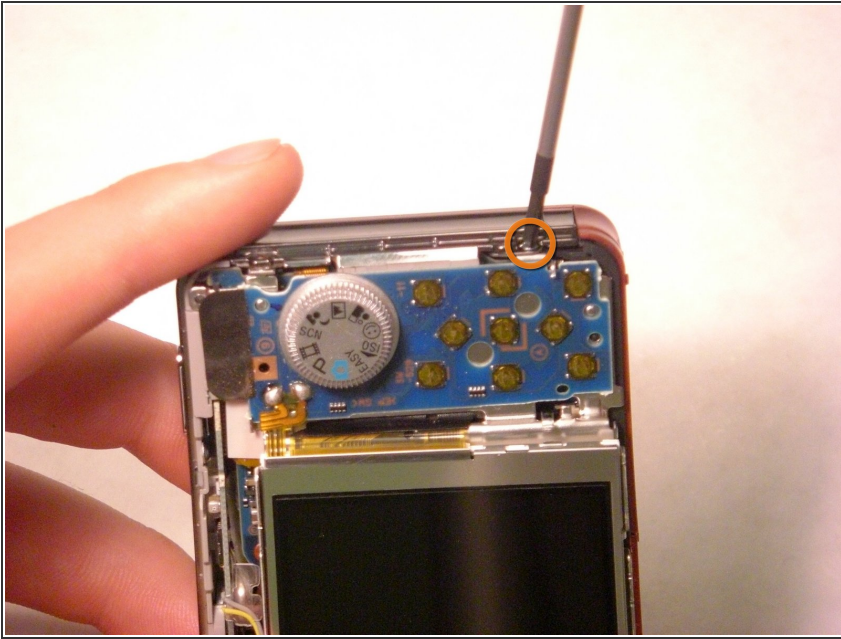
⚠ Be careful not to scratch any of the exposed electrical components.

Step 15



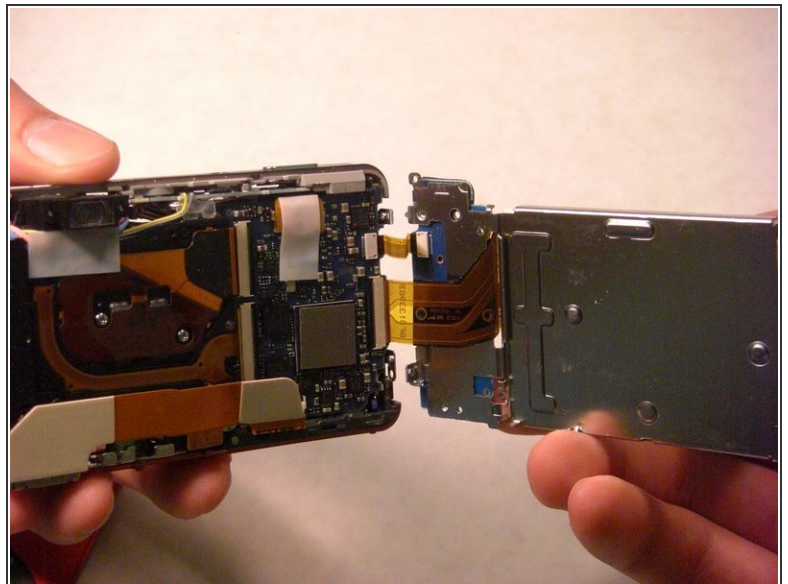
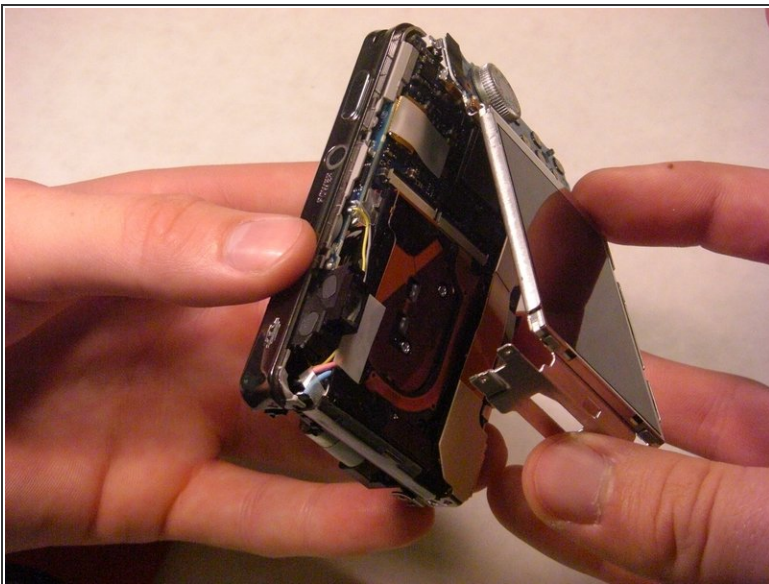
- Fully remove the front casing from the camera.

Step 16 — LCD Screen



- Remove the last screw holding the LCD/control panel to the rest of the camera on the right hand side. Looking at the right side of the camera, this last screw is in the bottom left corner. (There were two other screws that were removed when taking the back cover off, thus it is important to pay attention to which hole this screw comes out of for reassembly.)

Step 17



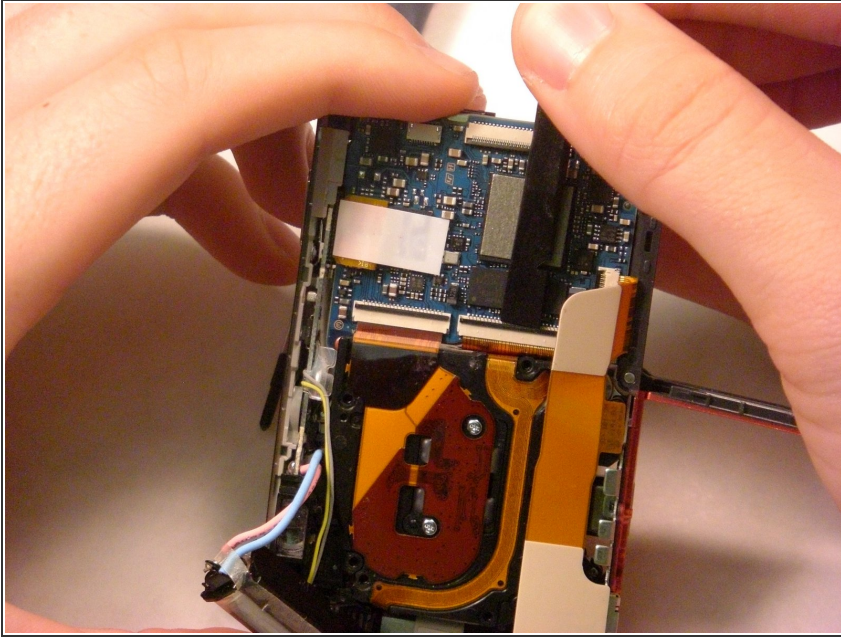
- At this point, all screws on the left and right sides of the camera should be removed.
- Paying careful attention to the right side's electrical wiring, gently pull the left side of the LCD plate away from the rest of the camera.



DO NOT detach the electrical wiring connecting the right side of the LCD and the camera.

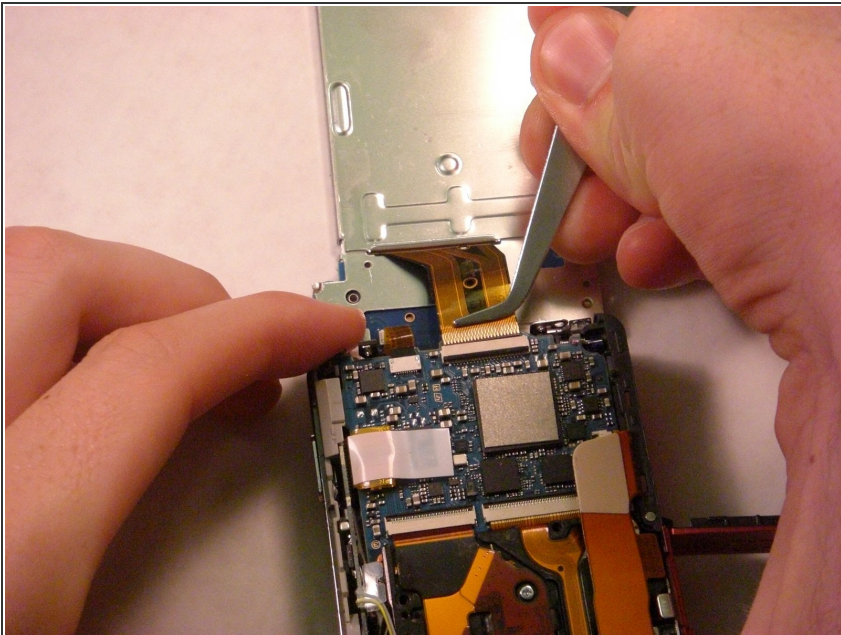
This document was generated on 2019-09-22 03:25:04 AM (MST).

Step 18



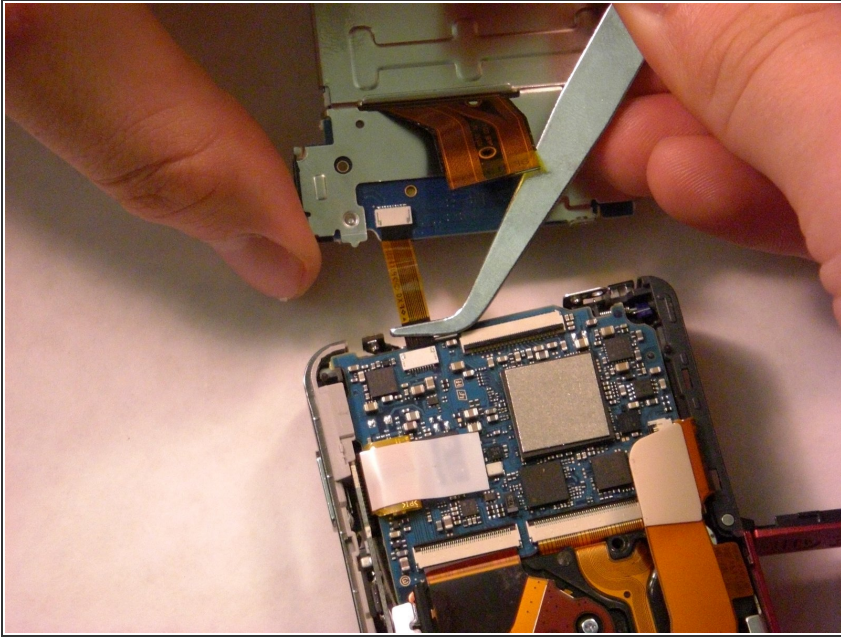
- ⓘ NOTE: This picture is simply used to identify the action required to release the electrical ribbons, but not the proper location for this step.
- This step applies to the larger electrical ribbon connecting the LCD screen and circuit board.
- Using a spudger, wedge the flat tipped end between the black bar and the circuit board.
- Carefully lift the black bar into the vertical position.

Step 19



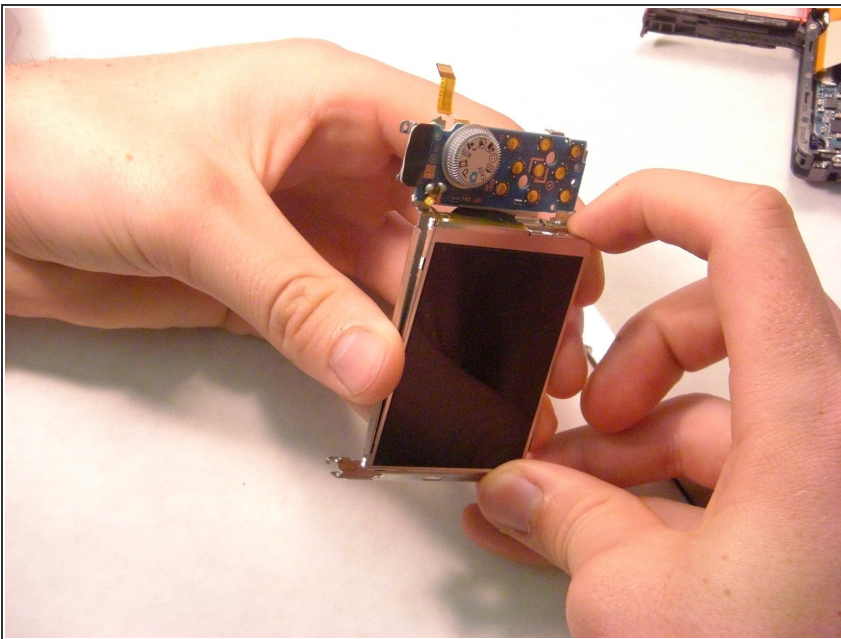
- ⓘ After raising the black bar, the electrical ribbon is free from its port.
- ⚠ Use tweezers to carefully pull larger electrical ribbon from its circuit board port.

Step 20



- i The smaller electrical ribbon, to the left of the larger ribbon, does not have a black bar securing it in place.
- ! Use tweezers to carefully pull smaller electrical ribbon from its circuit board port.

Step 21



- Desolder the small electrical ribbon that connects the control panel to the LCD screen.
- Now the LCD/control panel is completely removed from the part and ready to be replaced.

To reassemble your device, follow these instructions in reverse order.