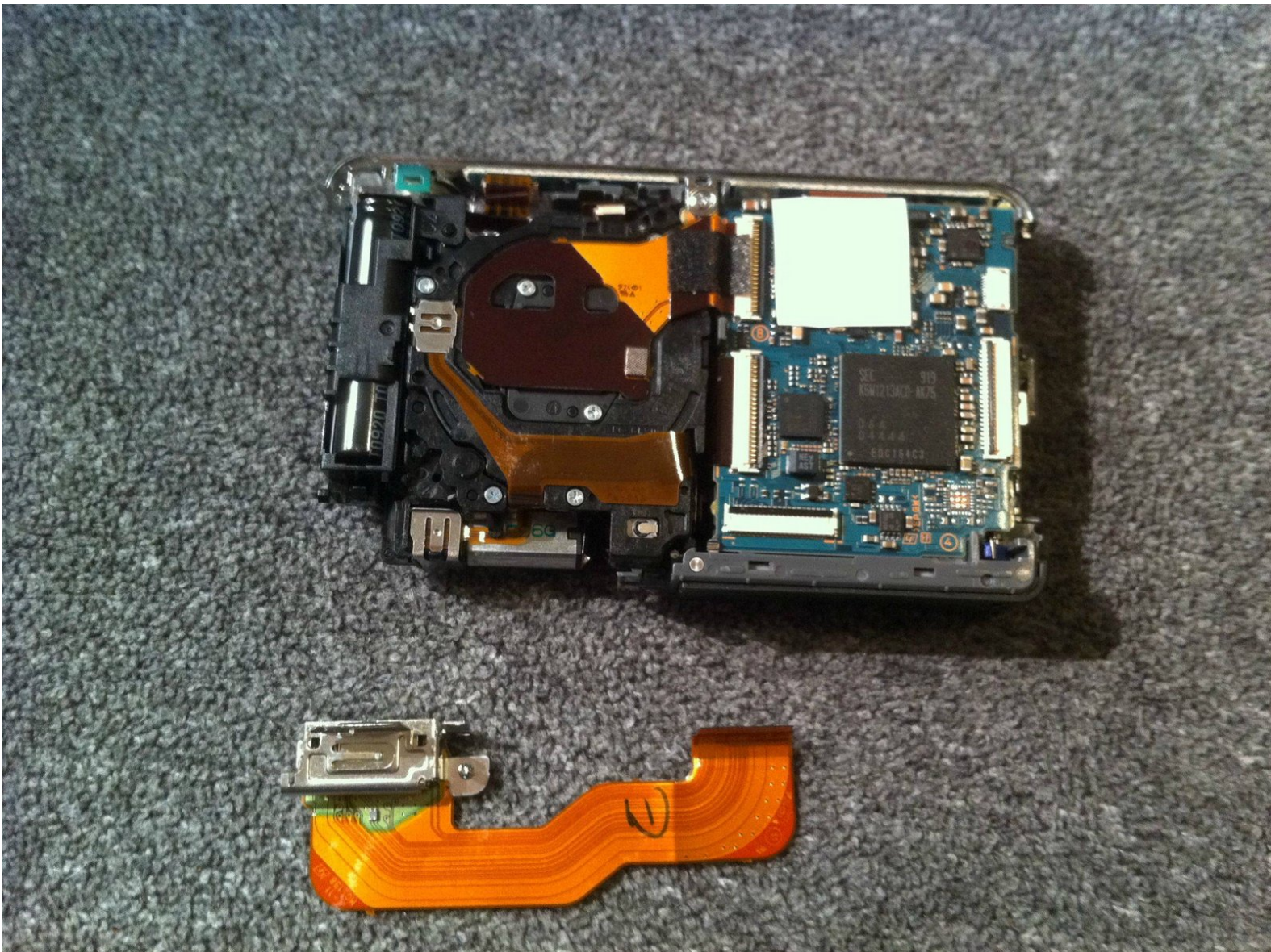




# Sony Cyber-shot DSC-W230 Ribbon Cable Replacement

This guide will explain how to disassemble the Sony Cyber-shot DSC-W230 to an extent allowing the ribbon cable can be removed and replaced.

Written By: Alex





## TOOLS:

- [Flathead 3/32" or 2.5 mm Screwdriver](#) (1)
-



## Step 1 — Disassembling Sony Cyber-shot DSC-W230 Exterior Case



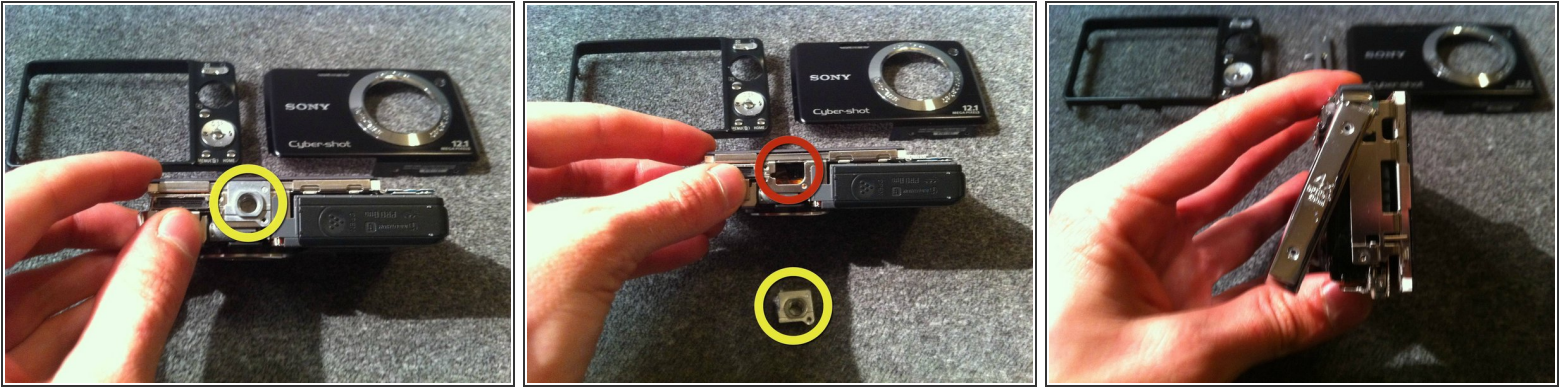
- Begin by placing the camera upside down and removing the three small center screws.
- All screws are the same size and length and can be used interchangeably.

## Step 2



- Turn the camera on its side (Counterclockwise). Remove the two small screws on either side of the silver panel.
- Turn the camera 180 degrees onto its other side and remove the two small screws on either side of the silver panel.

## Step 3



- Locate the camera's tripod mount located on the bottom of the camera.
- Carefully remove the camera's tripod mount and place it aside.
- Be careful not to lose this piece.
- Rotate the silver panel labeled 4x clockwise.



## Step 4 — Separating Camera and Display



- Align the camera so that the side with "4x Optical Zoom" is facing toward you.
- Gently twist the bottom corner clockwise until you feel the side panel unlock.
- Lift off the side panel and set aside.

## Step 5



- Rotate the camera 180 degrees to face the side panel with the lanyard loop on it.
- Gently lift the panel vertically until it lifts off

⚠ Take care to not lose the small rectangular portion on the bottom of the panel.

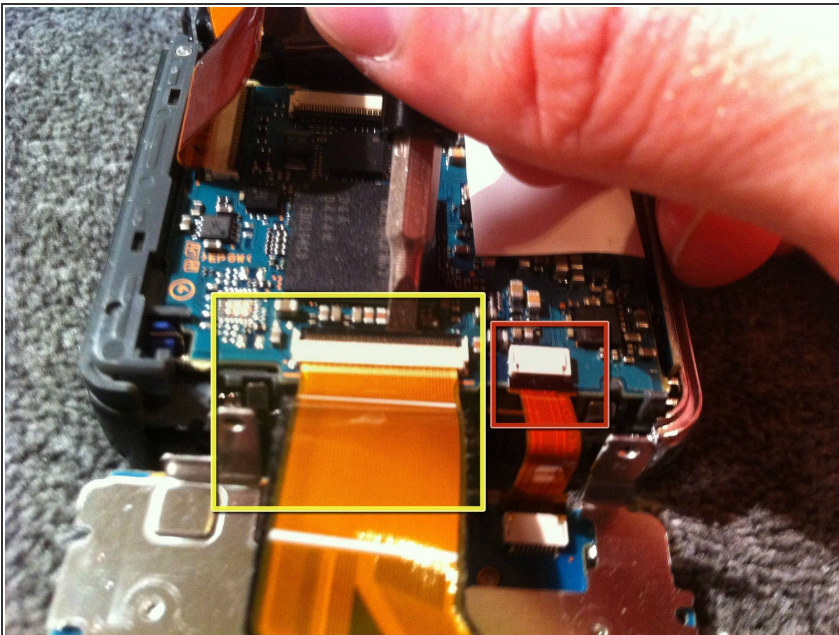


## Step 6



- Position the camera so the bottom is facing up and the display away from the surface.
- Gently pry the screen portion from the camera portion with your fingers or a plastic prybar.
- ⚠ Do not fully separate the two components! the screen is attached by two ribbon cables.
- Lay the display flat to expose the circuit board and the display control ribbon cables.

## Step 7 — Ribbon Cable



- Using a flat head screw driver gently pry up on the tab securing the larger ribbon cable which connects the display screen and camera sensor / battery housing.
- Remove the ribbon cable connecting the LCD display and camera sensor / battery housing.

- Following the same procedure, uninstall the ribbon cable connecting the main camera controls to the camera sensor and battery housing

## Step 8



- Now turn your attention to the camera sensor and battery housing. Identify the two connection points of the large ribbon cable.
- Carefully place a flathead screwdriver under the left ribbon cable connection point and pull up to disconnect.
- Repeat the previous step but this time carefully remove the right ribbon cable connection point.
- After both sides of the ribbon cable have been disconnected it is ready to be replaced.

To reassemble your device, follow these instructions in reverse order.