



Sony Cyber-shot DSC-W50 Front Case Replacement

This guide will show you how to take off and replace the front case of the Sony Cyber-shot DSC-W50.

Written By: Nicole Large





TOOLS:

- [Phillips #000 Screwdriver](#) (1)
-

Step 1 — Front Case



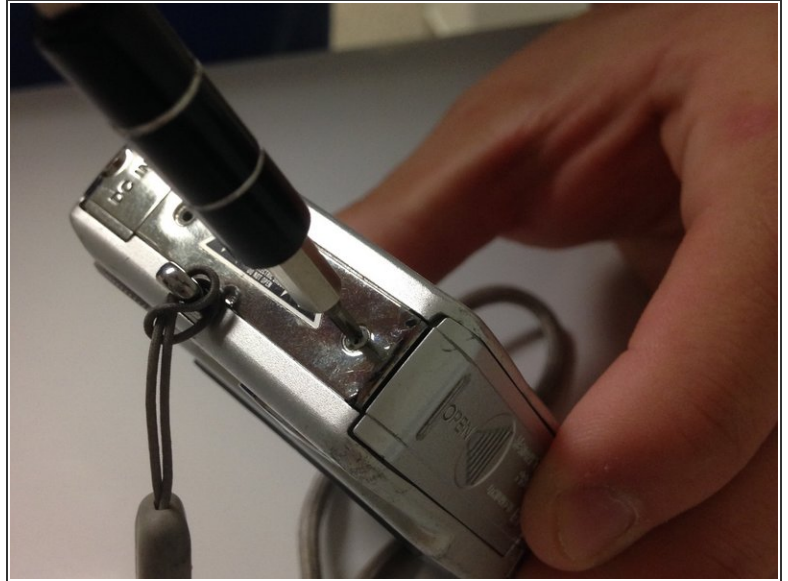
- Remove the rightmost screw on the bottom of the camera with the screwdriver.
- Remove the bottom left screw with the screwdriver.
- Remove the top left screw with the screwdriver.

Step 2



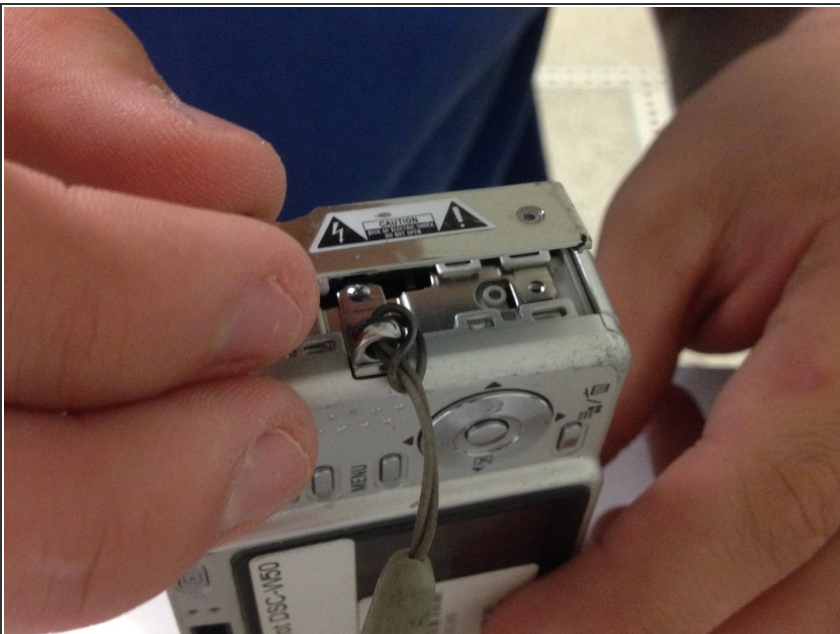
- Flip the camera over to expose its right side.
- Remove the screw with the screwdriver.

Step 3



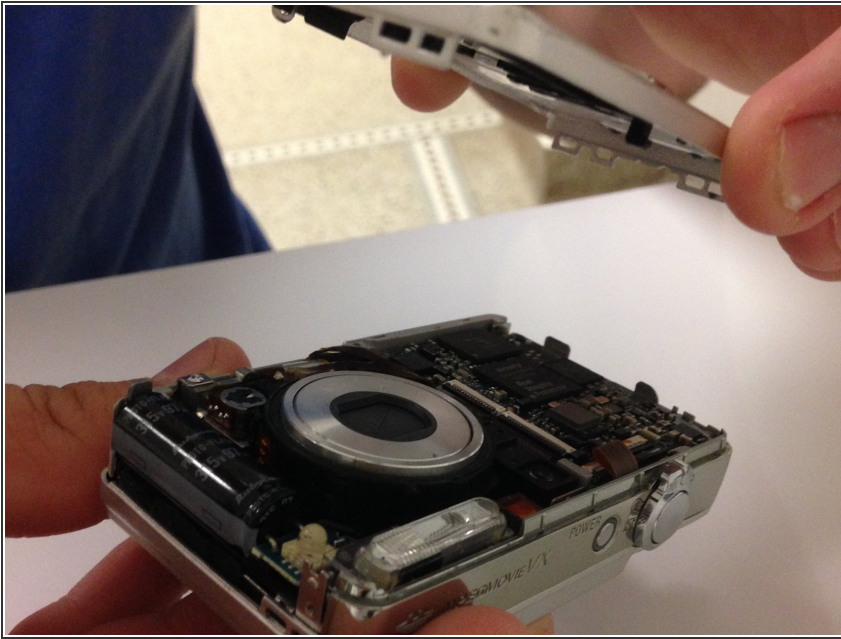
- Flip the camera to expose the left side with the wrist strap.
- Remove the top screw with the screwdriver.
- Remove the bottom screw with the screwdriver.

Step 4



- Lift the side panel of the camera up to release the front case.

Step 5



- Lift the front case up gently to remove it completely.

To reassemble your device, follow these instructions in reverse order.