



# Sony Cyber-shot DSC-W55 Back Case Replacement

Disassembling the back cover of the camera so that we can repair components from the inside.

Written By: kkfong91



---

# INTRODUCTION

Disassembling the back cover of the camera so that we can repair components from the inside.

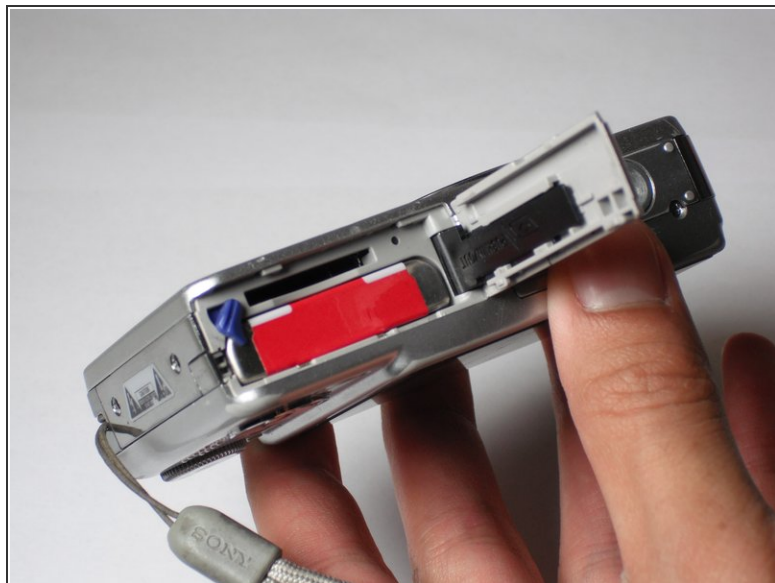
---



## TOOLS:

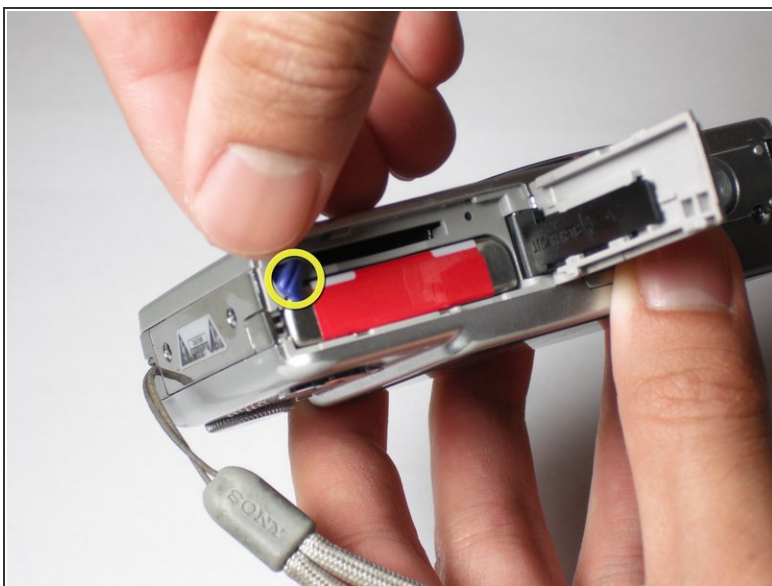
- [Phillips #00 Screwdriver](#) (1)
  - [iFixit Opening Tools](#) (1)
-

## Step 1 — Battery



- Slide the battery cover in the direction the arrow points.
- Pull the battery cover towards you.

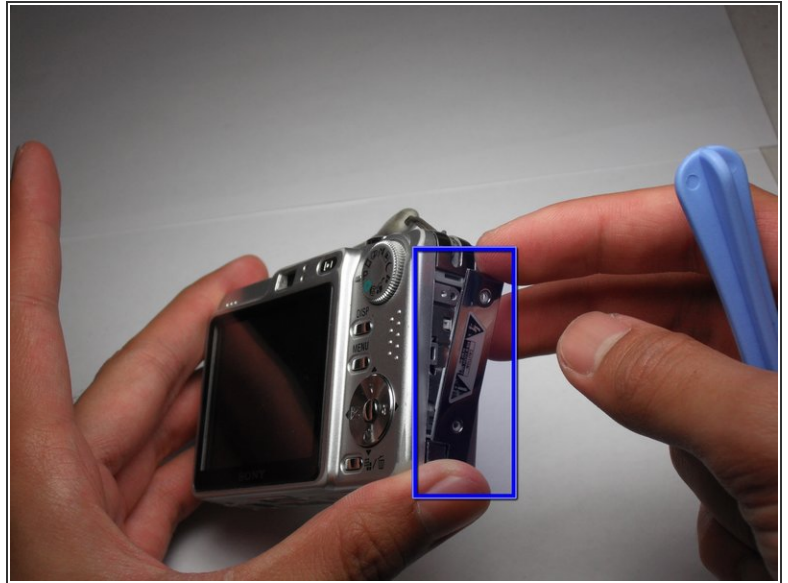
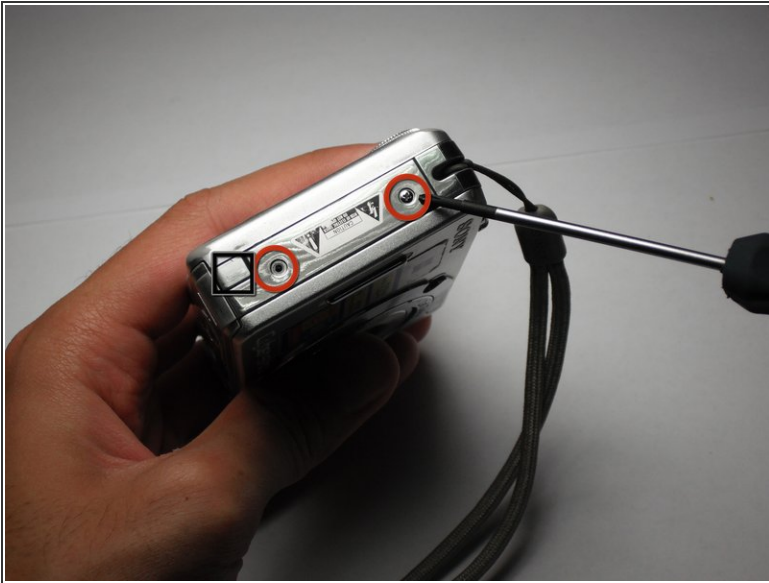
## Step 2



- Flick the blue switch for the battery to pop out.
- Remove the battery from the camera.



## Step 3 — Back Case

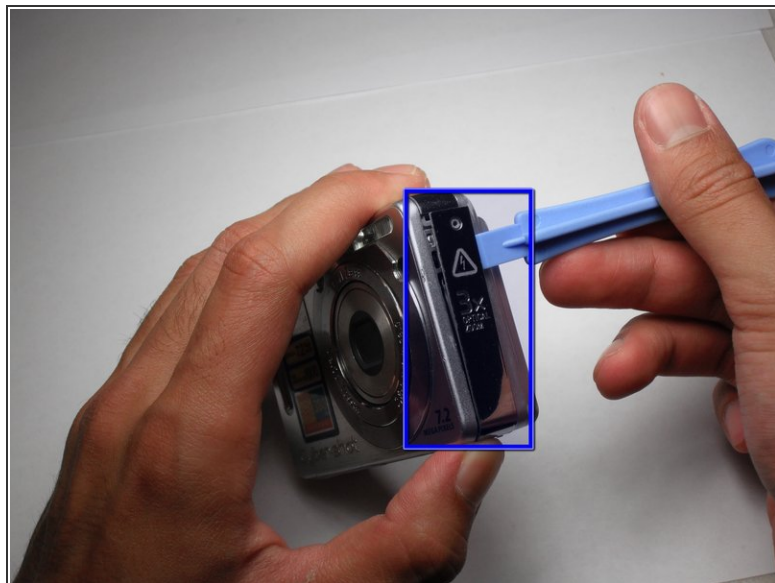
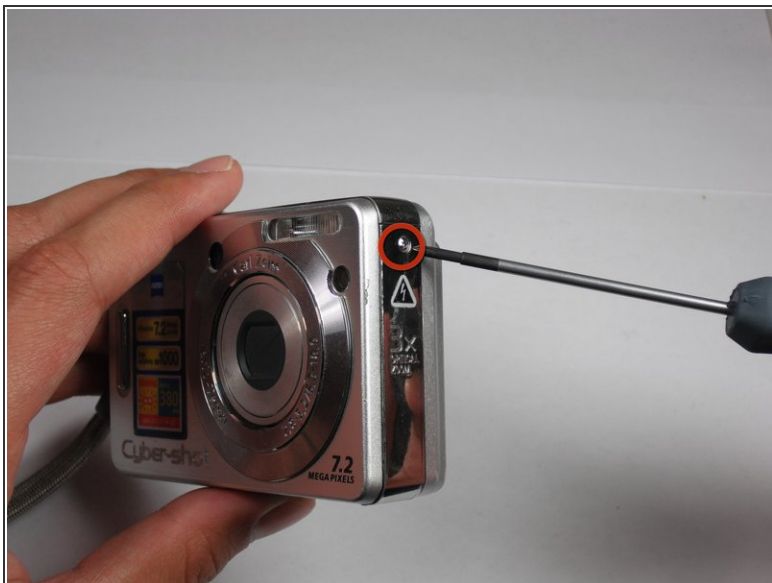


- Using the Phillips #00 Screwdriver, remove the two screws from the caution panel.

- Remove that panel.

⚠ Careful for falling pieces.

## Step 4



- Remove the screw with a Phillips #00 screwdriver from the right side of the camera (with '3x optical zoom' engraved on the side panel).
- Remove that panel.

## Step 5



- Remove the screw using the Phillips #00 screwdriver from the bottom of the camera, closest to the back cover.

## Step 6



- Gently remove the back cover.

⚠ It may be a bit stiff, so use some force to remove it. Proceed with caution.

To reassemble your device, follow these instructions in reverse order.