



# Sony Cyber-shot DSC-W570 Flash Replacement

This guide replaces the flash.

Written By: Kenneth



## INTRODUCTION

Be sure to remove the battery before beginning this procedure, and use caution when handling the flash capacitor. Do not touch the capacitor leads, or you may receive a nasty shock.

---

### TOOLS:

- [Phillips #00 Screwdriver](#) (1)
  - [iFixit Opening Tools](#) (1)
-

## Step 1 — Case Cover



- There are total 6 Phillip-head screws with the size of 2.93 mm on the outside of the camera.
- To open the case, first gently remove the 2 screws at the bottom of the camera.
- ☑ Make sure the battery compartment door is in lock position.

## Step 2



- Turn the camera sideways, remove the two screws located on the left side of the camera.

## Step 3



- Then remove the last two screws on the right side of the camera.

## Step 4



- To remove the front cover, use a plastic opening tool gently pry the top cover.
- Then gently lift the cover off.



## Step 5



- The front cover should now be detached from the camera.

## Step 6



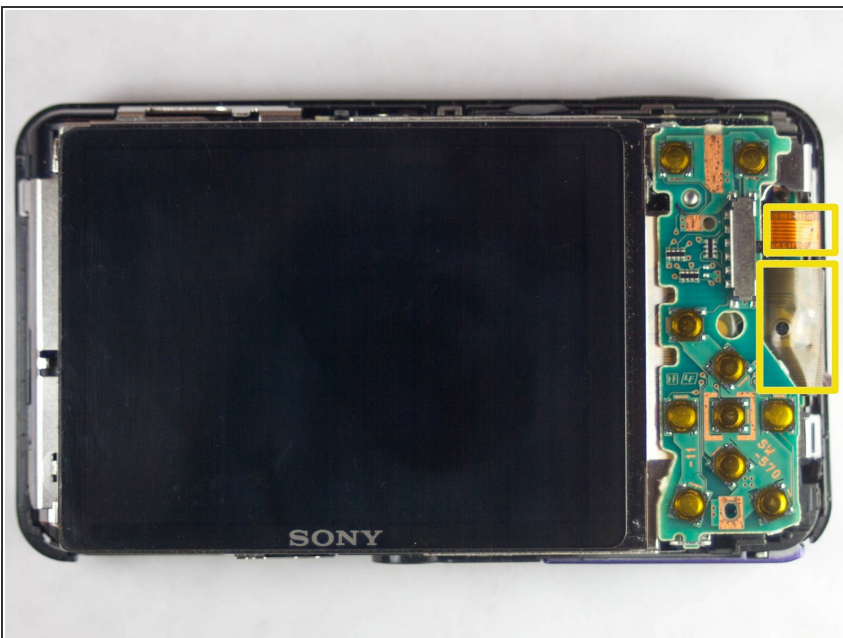
- To remove the back case cover from the body.
- First use a plastic opening tool gently pry along the side of the camera.
- Then slowly and gently lift the cover off.

## Step 7



- The back cover should now be detached from the camera.

## Step 8 — LCD Screen



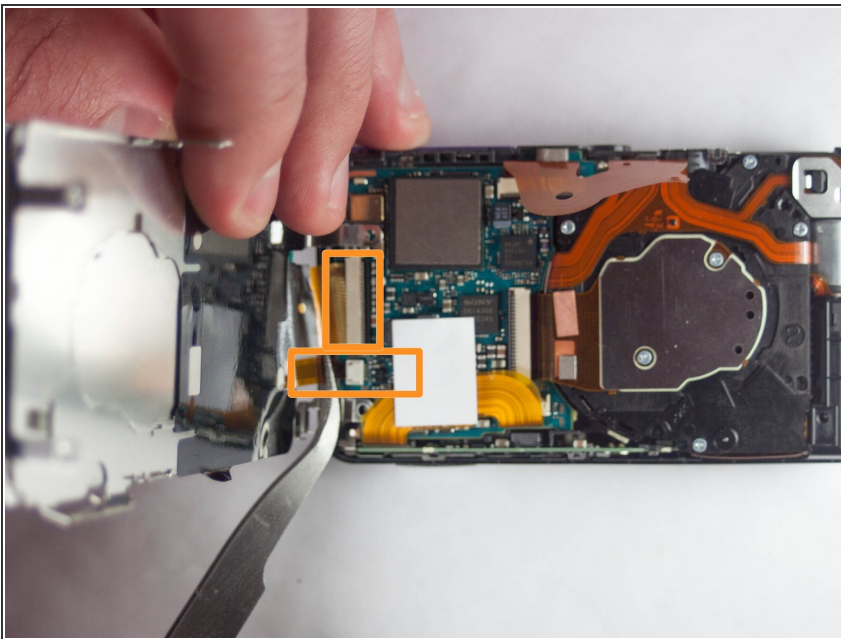
- These are the two cables connecting the LCD screen to the motherboard below the screen.

## Step 9



- Remove the LCD screen from the side opposite the battery terminals. Watch for the two cords mentioned in the previous step. These will still be connected. The side will flip up as shown in the next step.

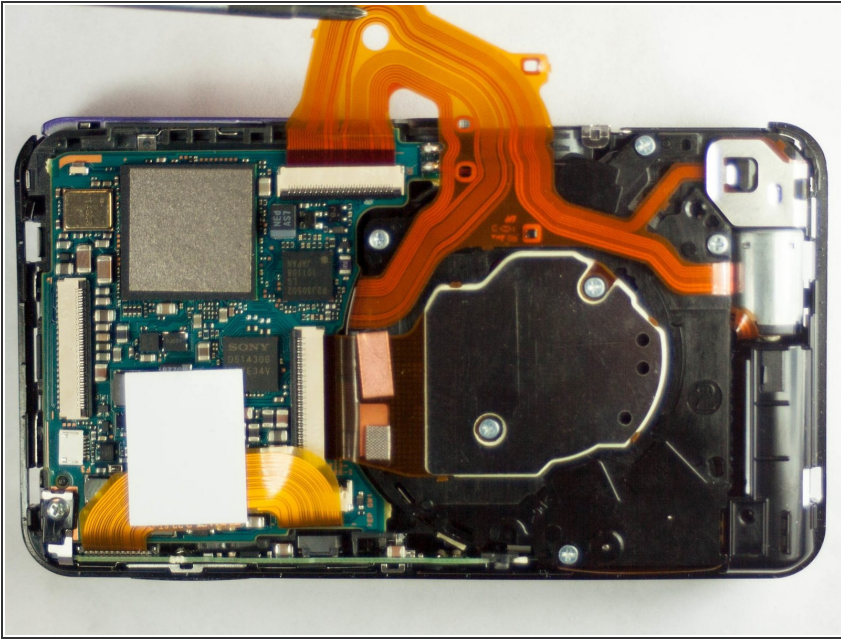
## Step 10



- Pull these two cords straight back to disconnect them from the respective housings. Caution: The housing do not need to be moved or adjusted in anyway. Do not pull the cords at an angle, it can destroy the cords and the housing. Pull Straight Back!



## Step 11



- This is what the camera should look like after 2 cords and the screen have been removed. The lens cord is being held to the side for a clearer view.

## Step 12 — Flash

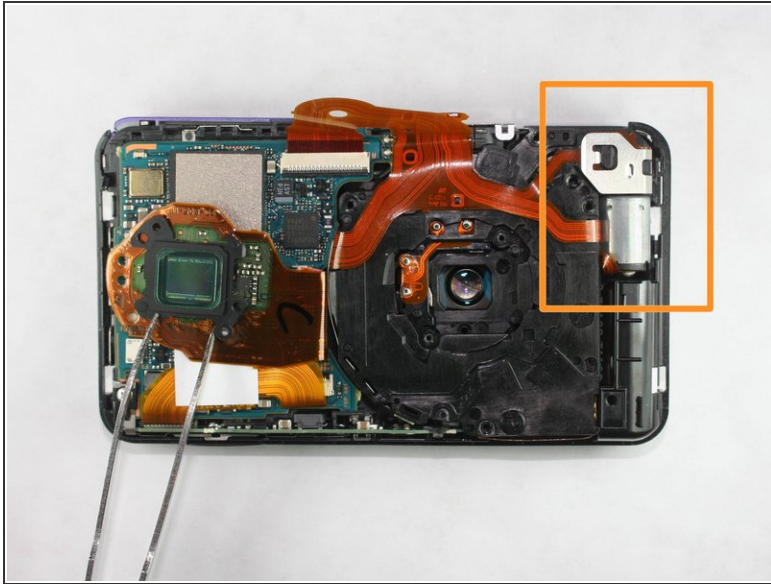


- These are buttons for menu. Be sure to check that the flash settings are correct for your scene. Do not



replace flash until settings are verified.

## Step 13



**⚠ Caution:** Touching the capacitor wires may cause serious injury. Use a [capacitor discharge probe](#) to safely rid the capacitors of dangerous charges.

- After camera is disassembled the capacitor will need to be removed. Ribbons are gently pulled away from connector.

To reassemble your device, follow these instructions in reverse order.