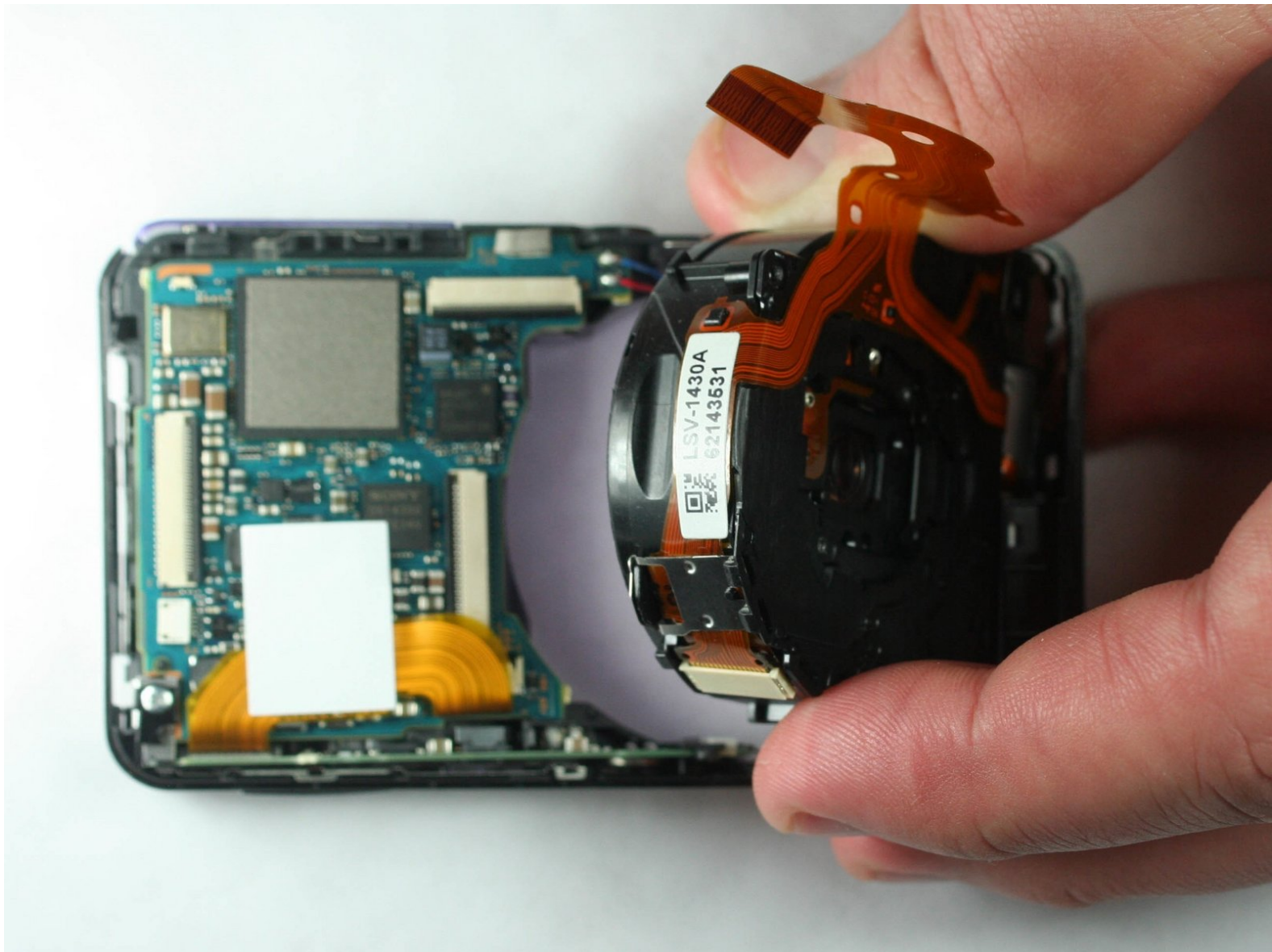




Sony Cyber-shot DSC-W570 Lens Replacement

This guide explains the steps required to remove the lens from the camera.

Written By: Gonzalo





TOOLS:

- [Phillips #00 Screwdriver](#) (1)
 - [iFixit Opening Tools](#) (1)
 - [Tweezers](#) (1)
-

Step 1 — Case Cover



- There are total 6 Phillip-head screws with the size of 2.93 mm on the outside of the camera.
- To open the case, first gently remove the 2 screws at the bottom of the camera.
- ☑ Make sure the battery compartment door is in lock position.

Step 2



- Turn the camera sideways, remove the two screws located on the left side of the camera.

Step 3



- Then remove the last two screws on the right side of the camera.

Step 4



- To remove the front cover, use a plastic opening tool gently pry the top cover.
- Then gently lift the cover off.

Step 5



- The front cover should now be detached from the camera.

Step 6



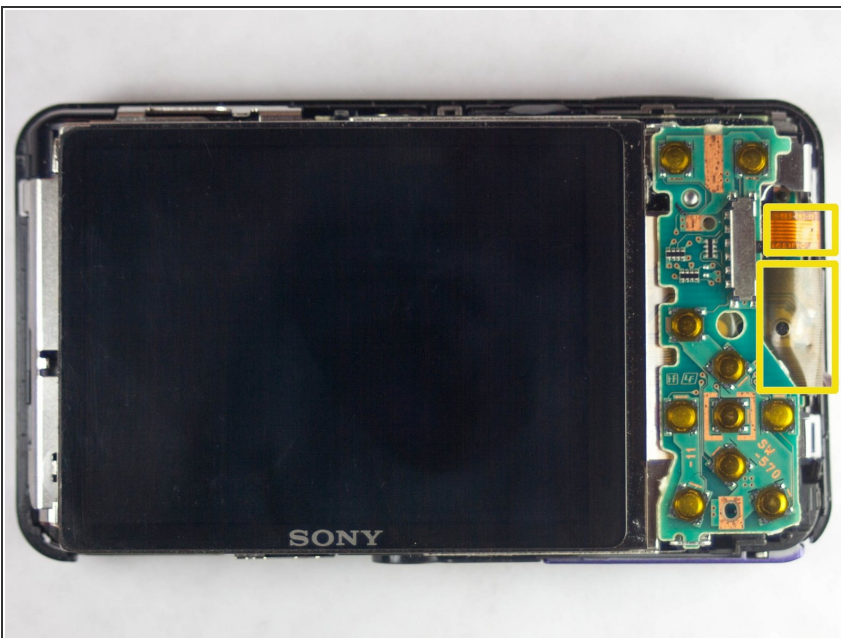
- To remove the back case cover from the body.
- First use a plastic opening tool gently pry along the side of the camera.
- Then slowly and gently lift the cover off.

Step 7



- The back cover should now be detached from the camera.

Step 8 — LCD Screen



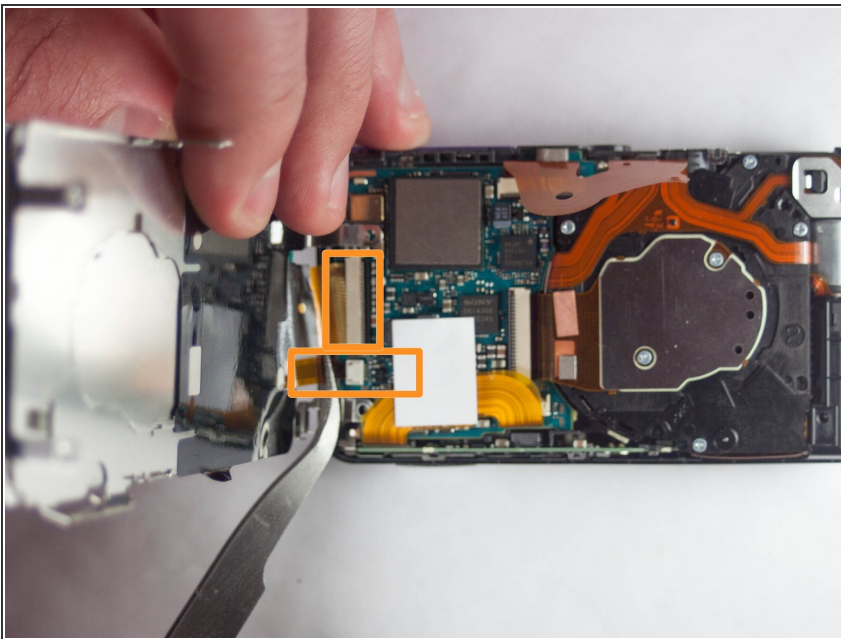
- These are the two cables connecting the LCD screen to the motherboard below the screen.

Step 9



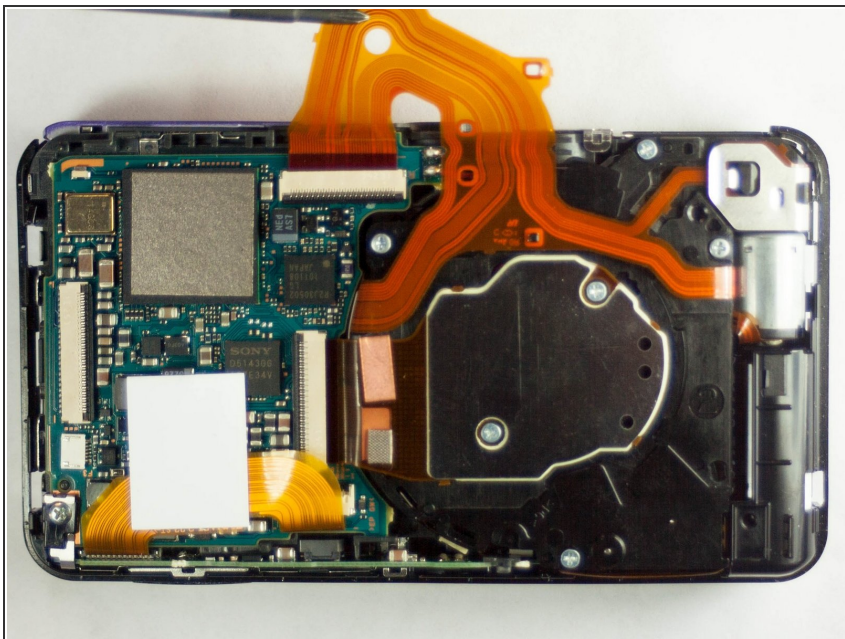
- Remove the LCD screen from the side opposite the battery terminals. Watch for the two cords mentioned in the previous step. These will still be connected. The side will flip up as shown in the next step.

Step 10



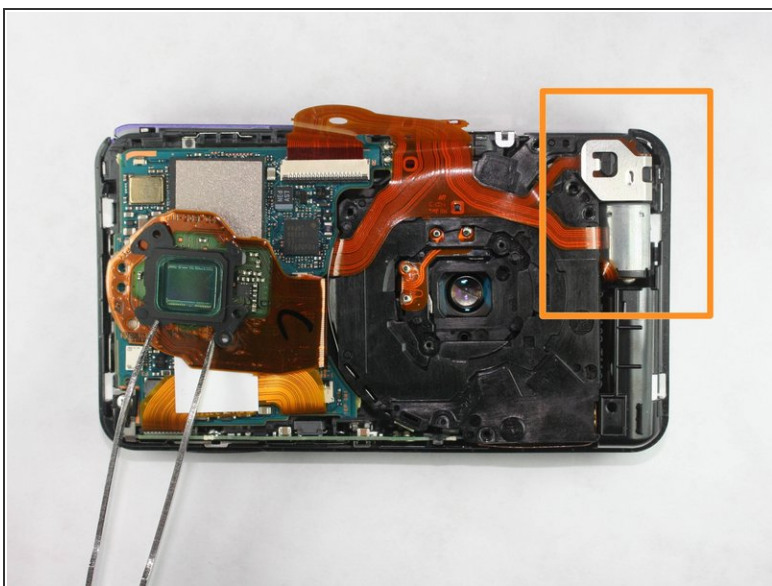
- Pull these two cords straight back to disconnect them from the respective housings. Caution: The housing do not need to be moved or adjusted in anyway. Do not pull the cords at an angle, it can destroy the cords and the housing. Pull Straight Back!

Step 11



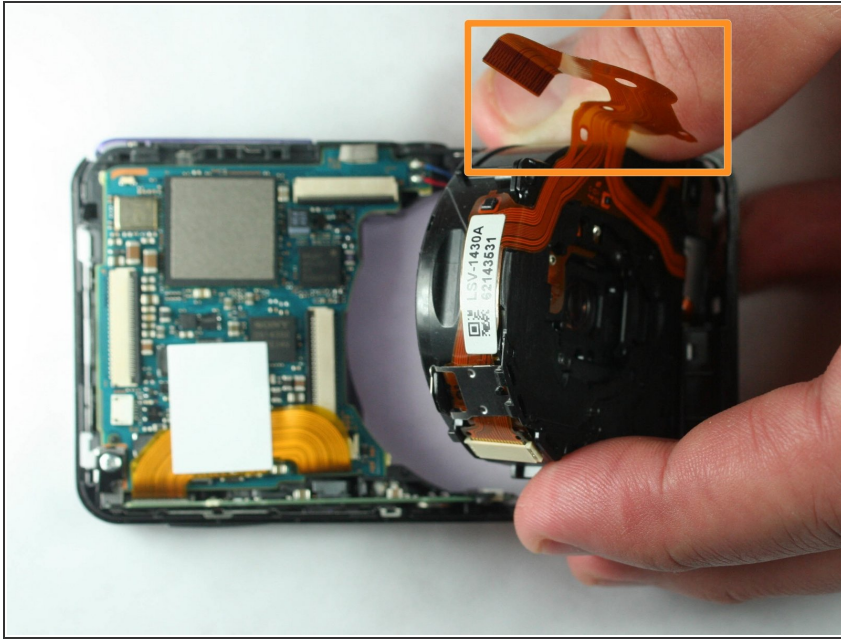
- This is what the camera should look like after 2 cords and the screen have been removed. The lens cord is being held to the side for a clearer view.

Step 12 — Lens



- After camera is disassembled the capacitor will need to be removed. Use tweezers to gently pull away the ribbon from the connector.

Step 13



- With the camera lying face down, separate the tape that connects the rest of the lens using tweezers.
- Gently remove the lens display using your fingers out of the camera body.
- ⚠ Take caution not to damage any of the ribbon cables that might still be attached.
- The lens assembly is now removed from the camera body and is able to be replaced if necessary.

To reassemble your device, follow these instructions in reverse order.