



Sony Cyber-shot DSC-W580 Disassembly

Complete disassembly of Sony Cyber-shot DSC-W580 camera.

Written By: Adam Suchý





TOOLS:

- [Phillips #00 Screwdriver](#) (1)
 - [Tweezers](#) (1)
-

Step 1 — Sony Cyber-shot DSC-W580 Disassembly



- Remove battery and SD card

Step 2



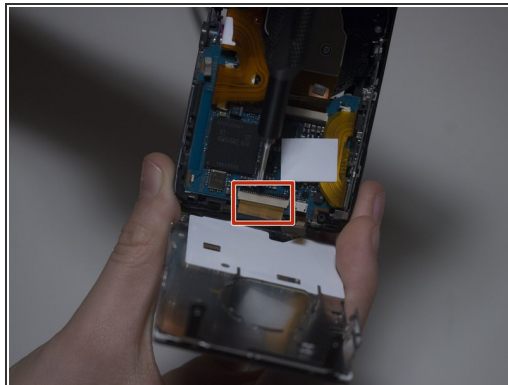
- Unscrew six screws holding the cover.

Step 3



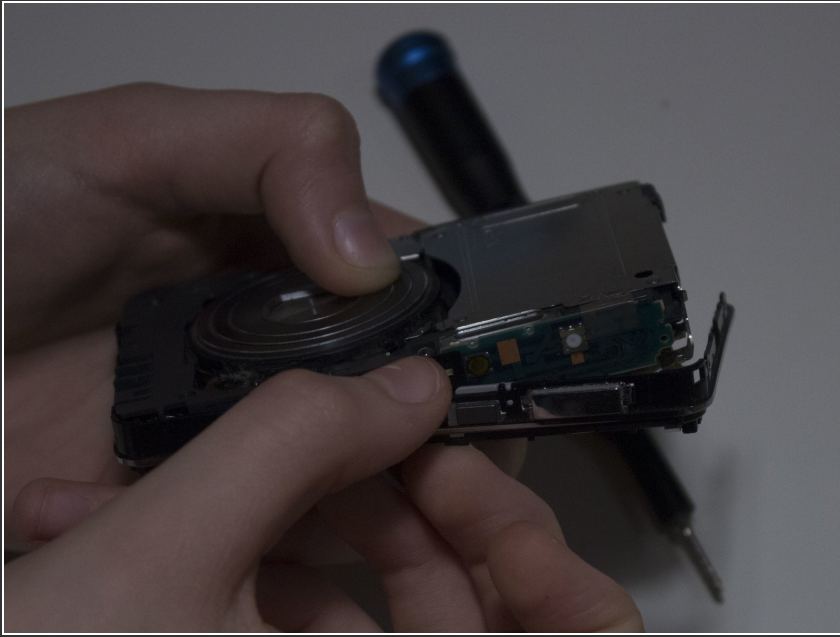
- Remove the cover

Step 4



- Disconnect the two ribbon cables connecting the monitor

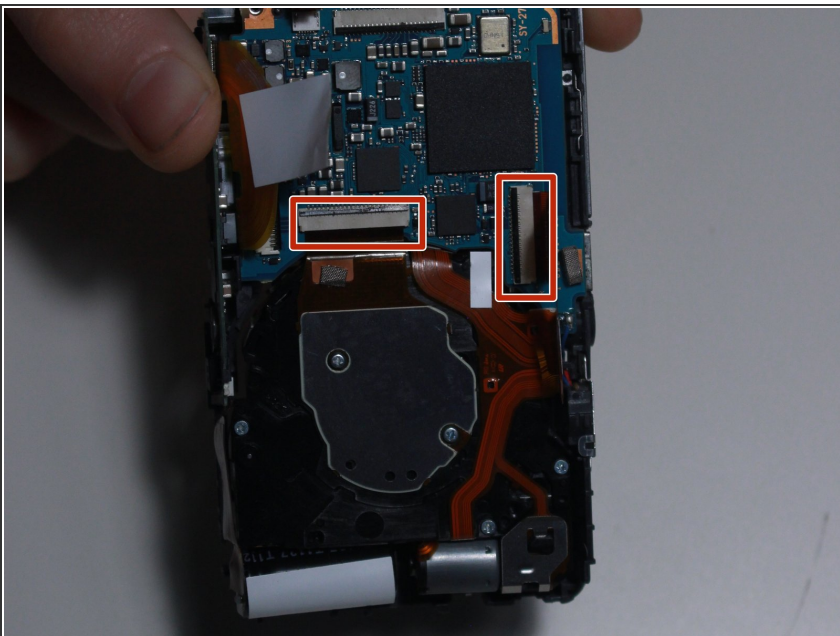
Step 5



- Remove top buttons.

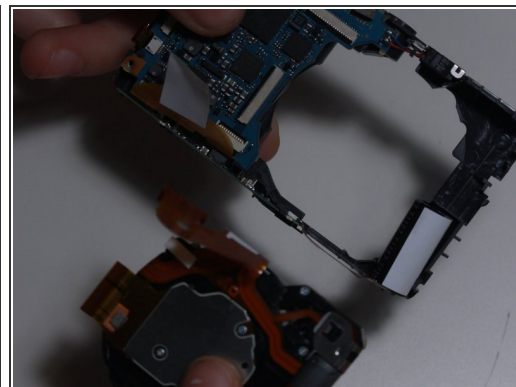
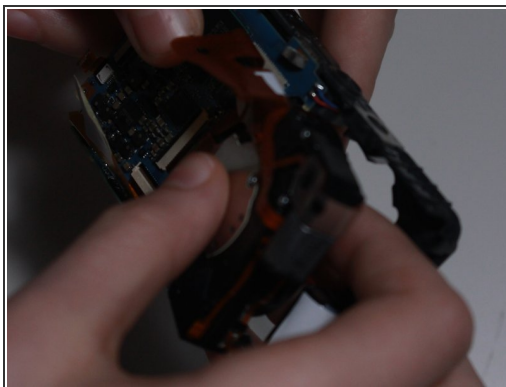
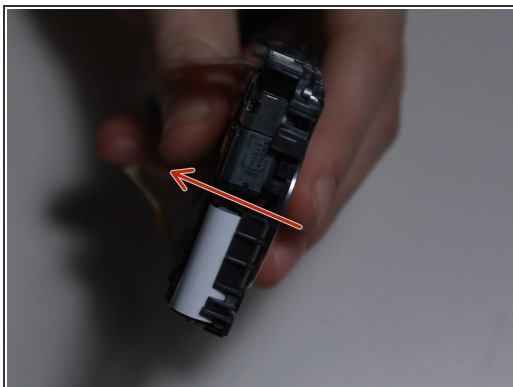
⚠ Be careful, this part can be easily broken.

Step 6



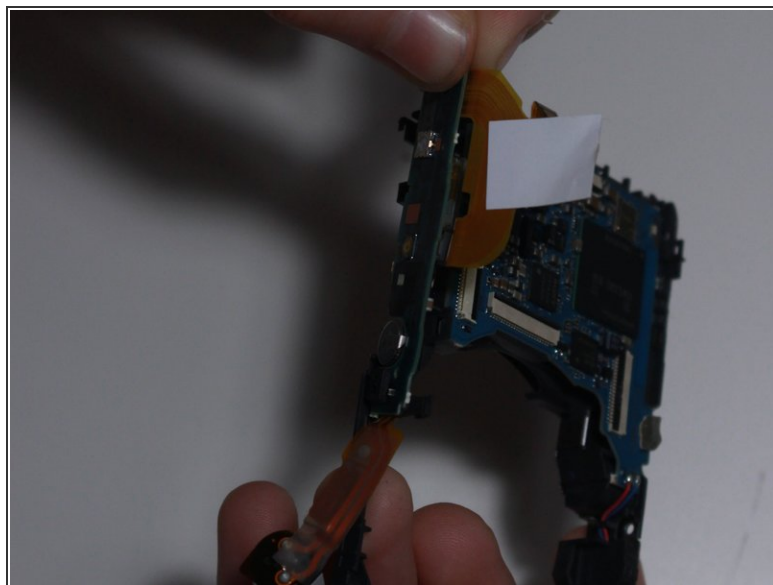
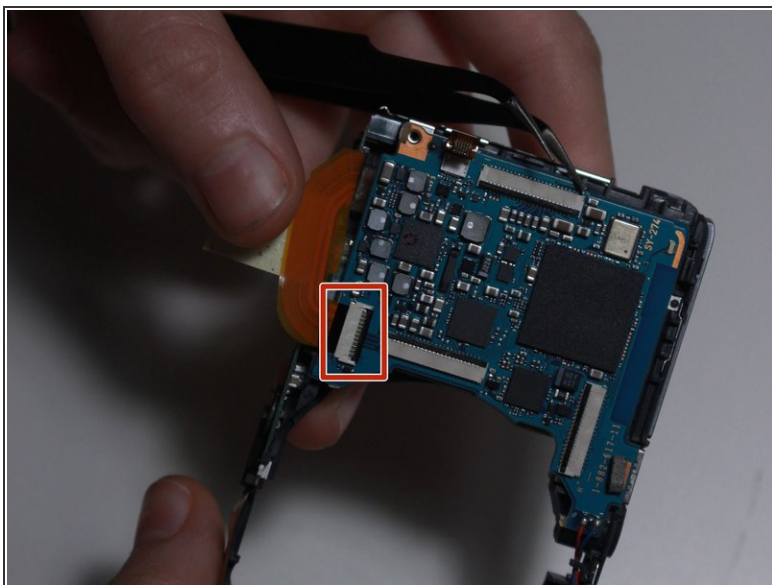
- Disconnect two ribbon cables connecting the lens and sensor.

Step 7



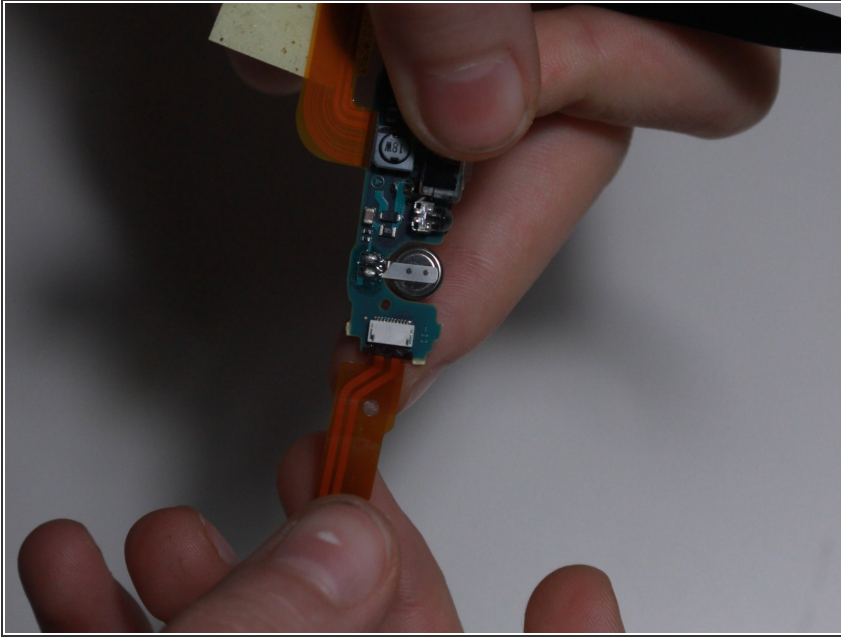
- Apply a bit of force on the front of the lenses until they pop up.
- Now you can safely remove them.

Step 8



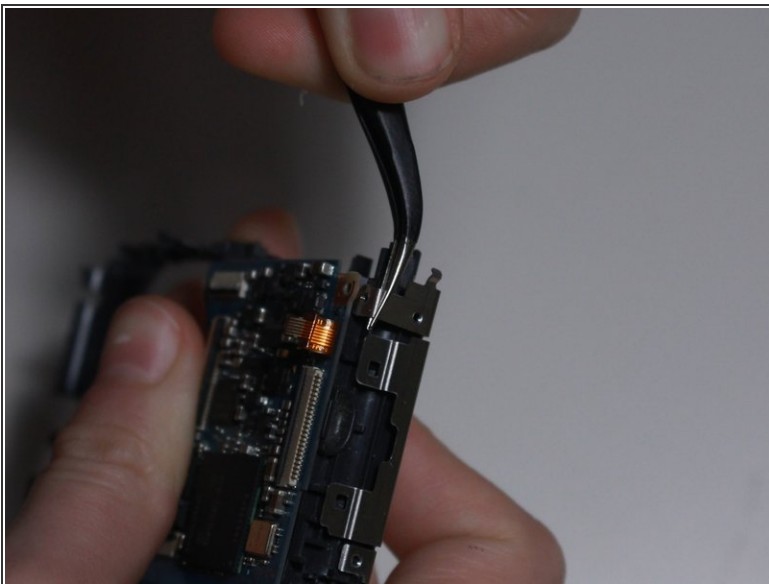
- Disconnect ribbon cable connecting the flash with the motherboard.
- and remove the flash.

Step 9



- Now remove the capacitor.

Step 10



- Lift these two pieces and slide the metal cover off.

If you want to disassemble the lens check out this guide!

[Sony Cyber-shot DSC-W580 lens disassembly.](#)