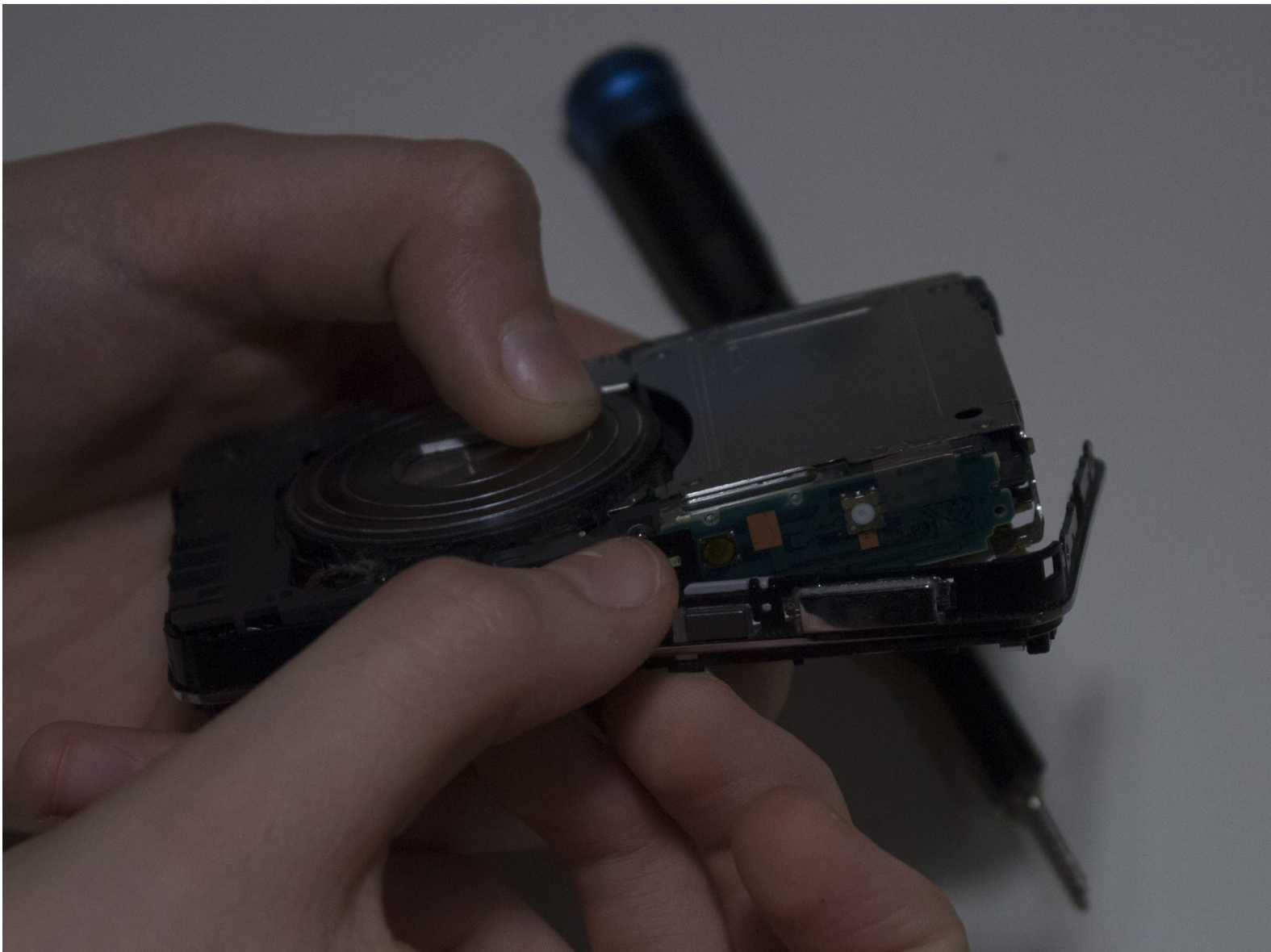




# Sony Cyber-shot DSC-W580 lens disassembly.

Complete disassembly of Sony Cyber-shot DSC-W580 lenses.

Written By: Adam Suchý



---

# INTRODUCTION

Complete disassembly of Sony Cyber-shot DSC-W580 lenses.



## TOOLS:

- [Phillips #00 Screwdriver](#) (1)
  - [Tweezers](#) (1)
-

## Step 1 — Sony Cyber-shot DSC-W580 Disassembly



- Remove battery and SD card

## Step 2



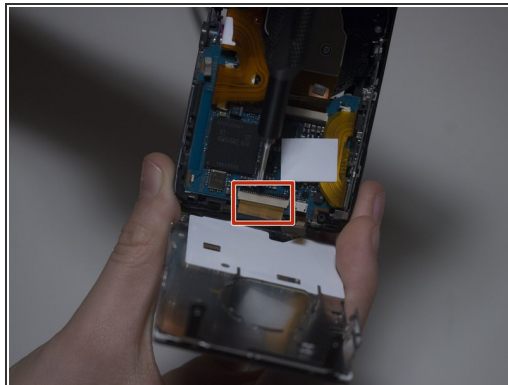
- Unscrew six screws holding the cover.

### Step 3



- Remove the cover

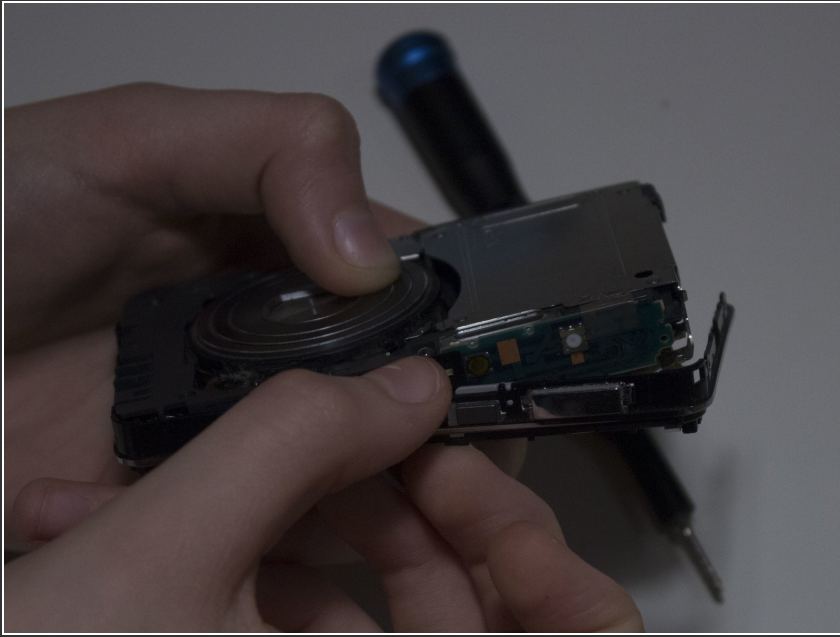
### Step 4



- Disconnect the two ribbon cables connecting the monitor



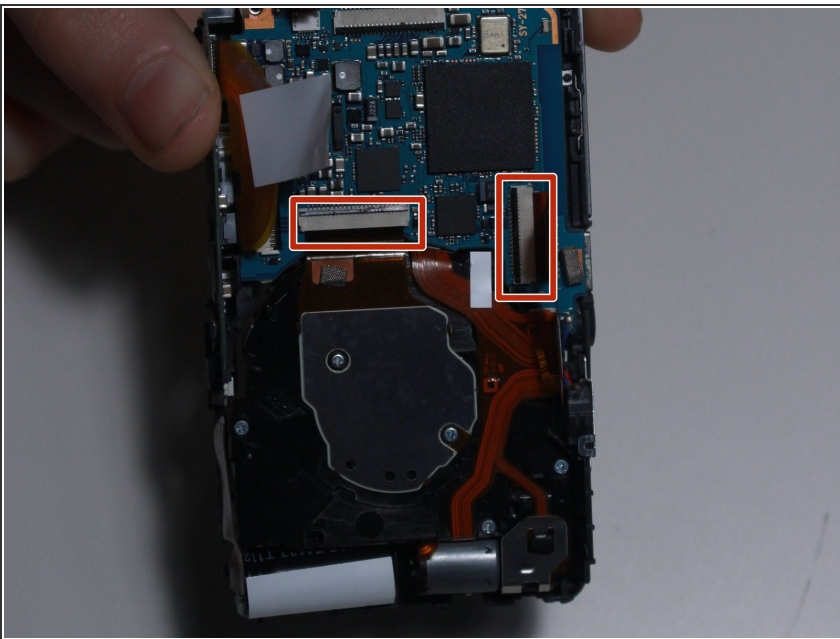
## Step 5



- Remove top buttons.

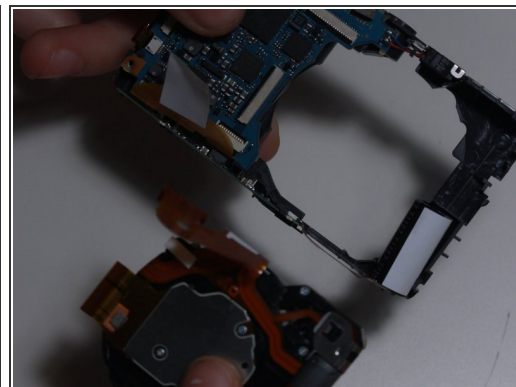
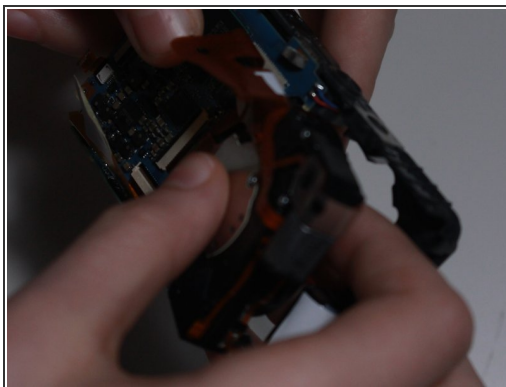
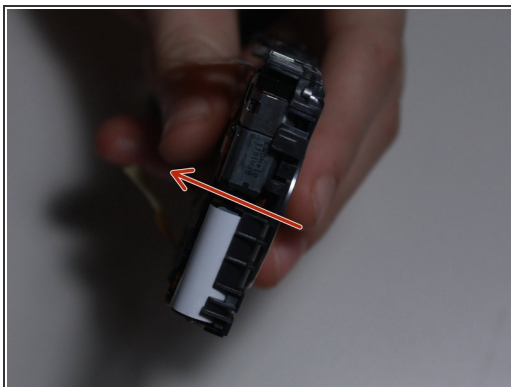
**⚠ Be careful, this part can be easily broken.**

## Step 6



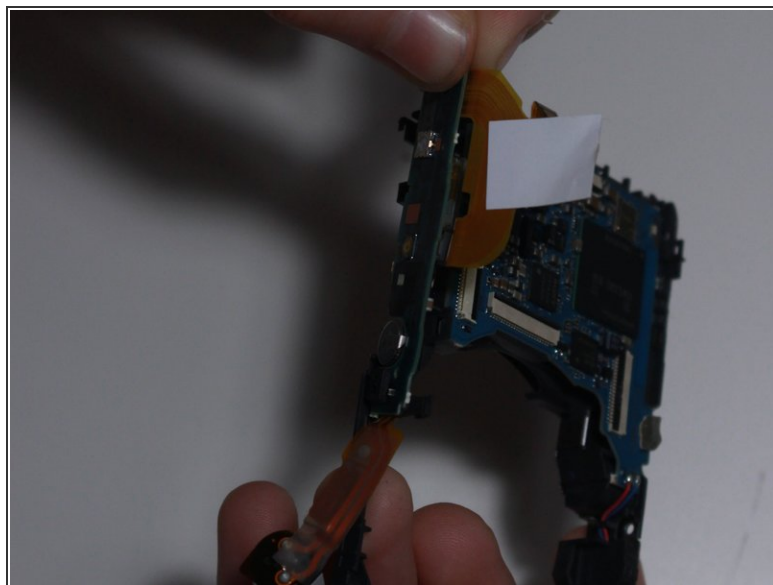
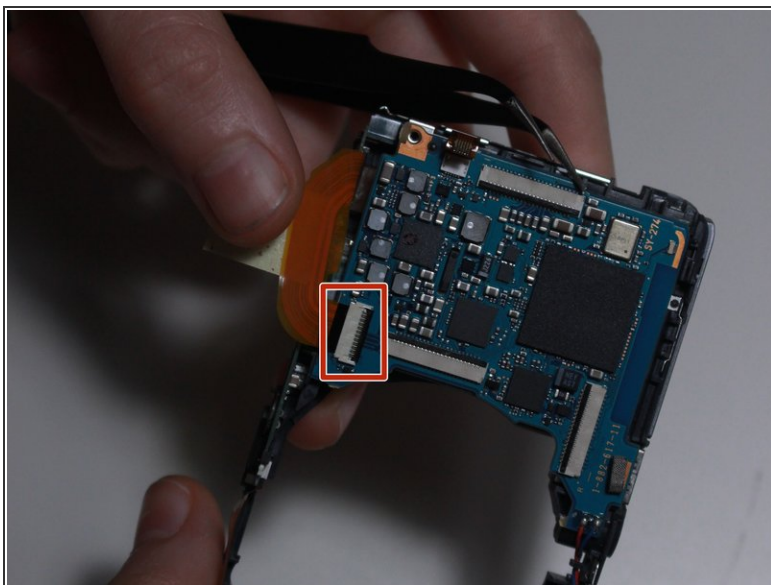
- Disconnect two ribbon cables connecting the lens and sensor.

## Step 7



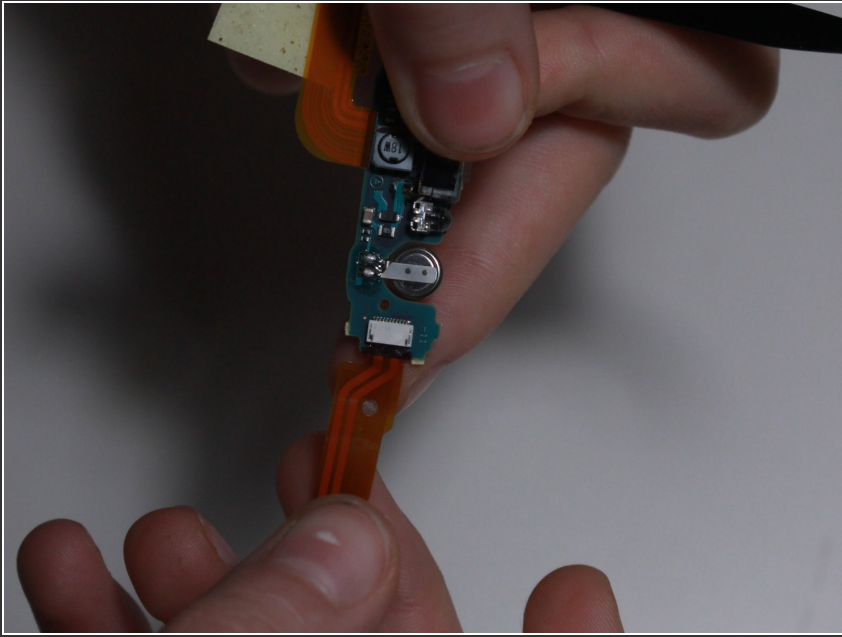
- Apply a bit of force on the front of the lenses until they pop up.
- Now you can safely remove them.

## Step 8



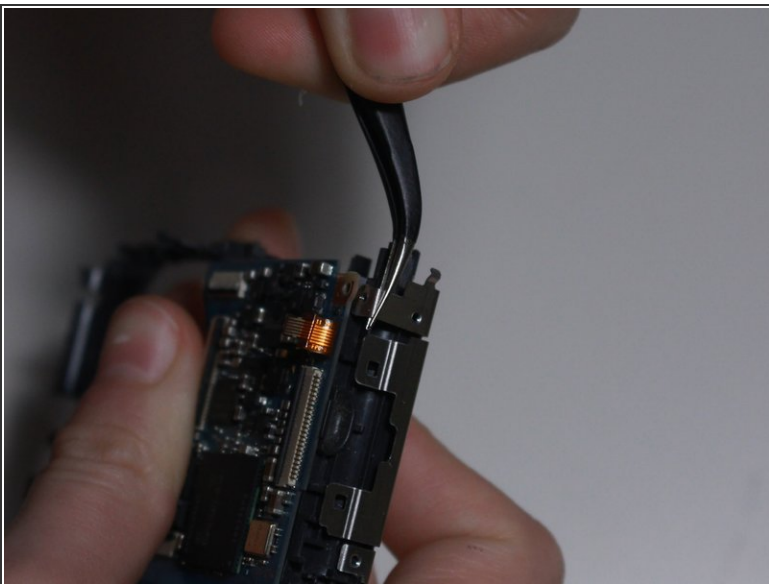
- Disconnect ribbon cable connecting the flash with the motherboard.
- and remove the flash.

## Step 9



- Now remove the capacitor.

## Step 10



- Lift these two pieces and slide the metal cover off.

To reassemble your device, follow these instructions in reverse order.