



Sony Cyber-shot DSC-W690 LCD screen Replacement

This guide will show you how to disassemble and instal new LCD screen.

Written By: Will Norris

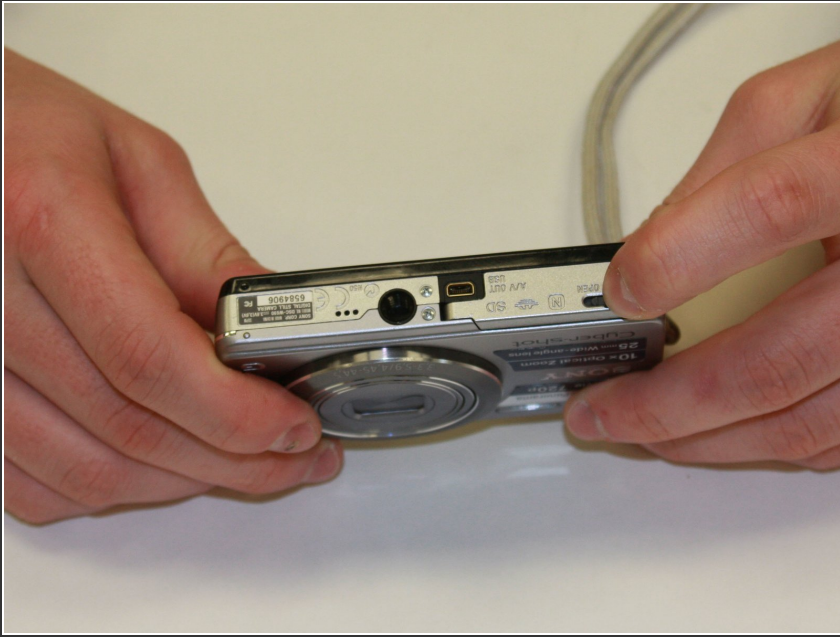




TOOLS:

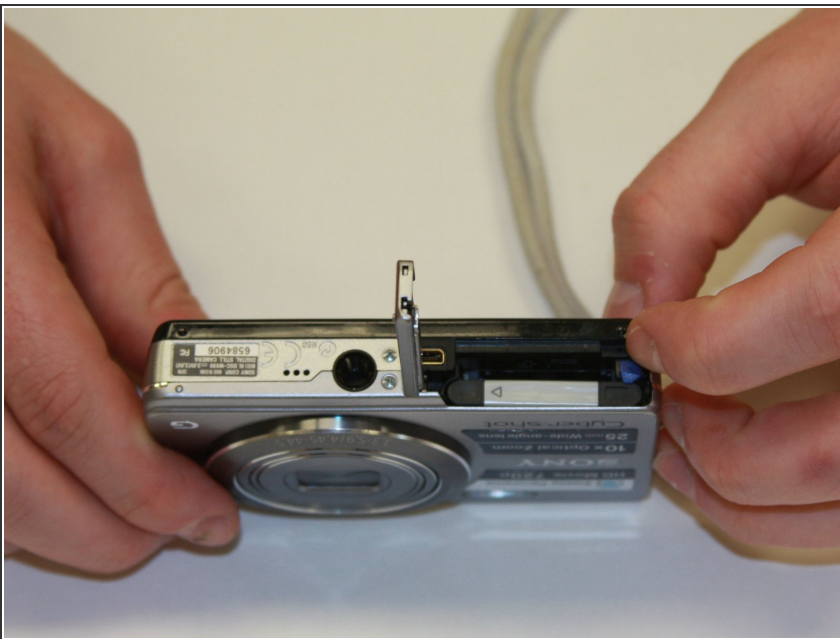
- [Phillips #00 Screwdriver](#) (1)
 - [Spudger](#) (1)
-

Step 1 — Battery



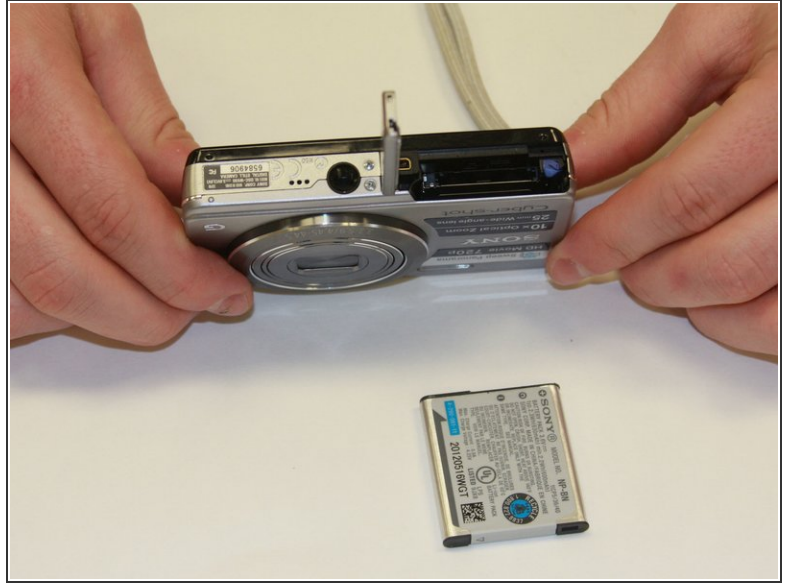
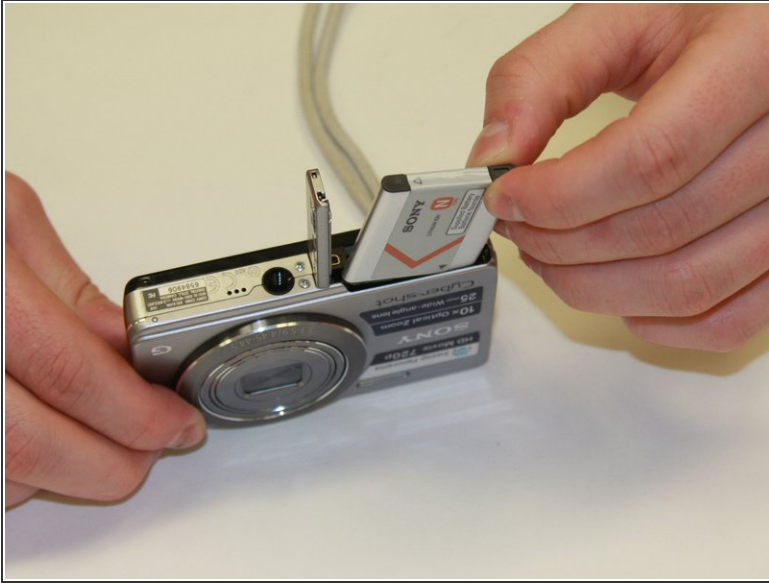
- Open the battery door.

Step 2



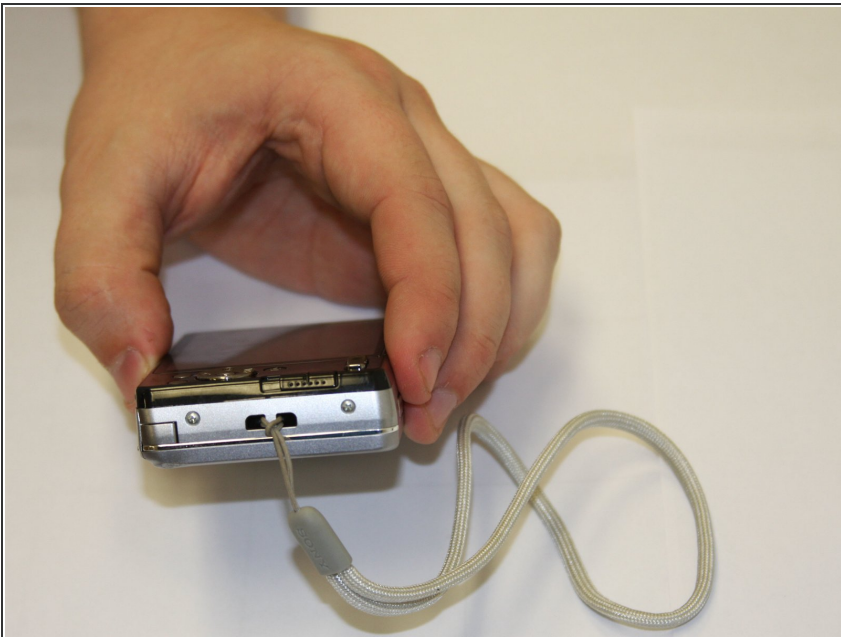
- Open the battery lock to release the battery.

Step 3



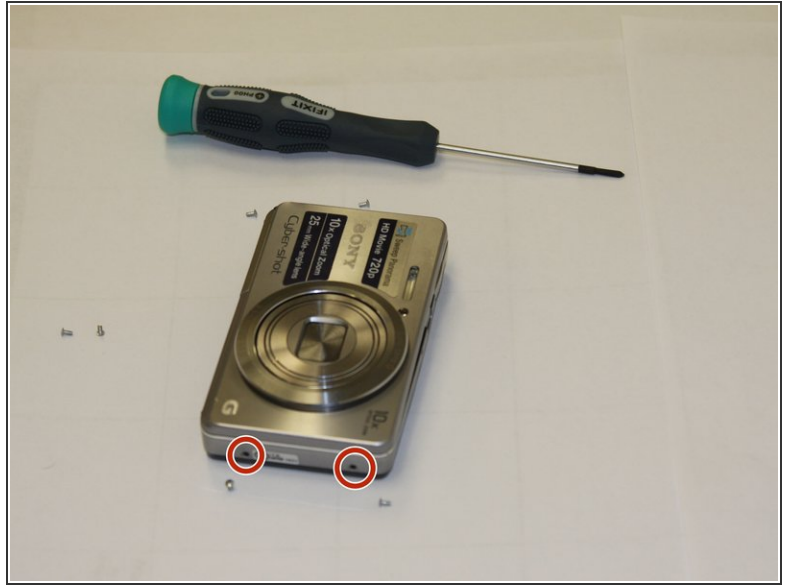
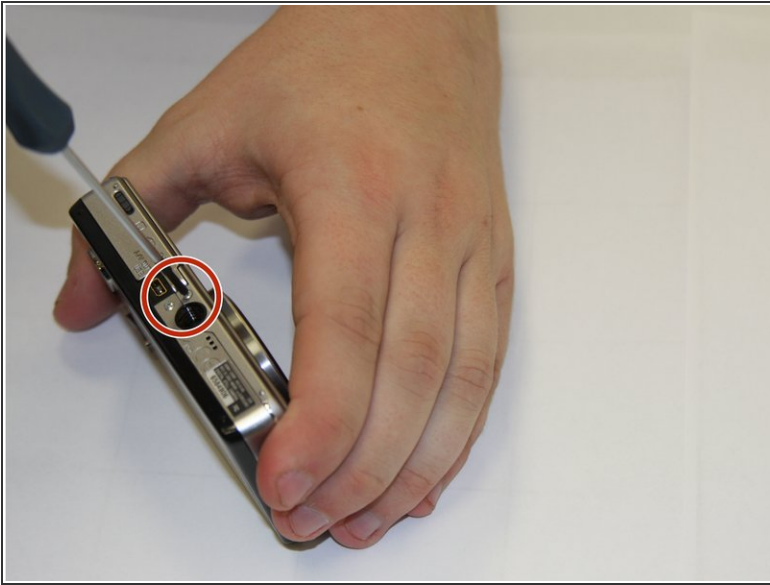
- Remove the battery.

Step 4 — Front and Back Case



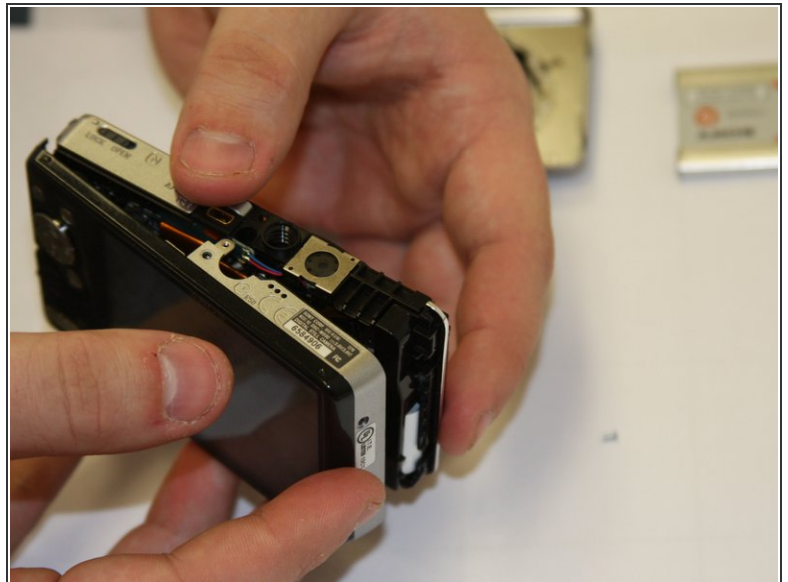
- Remove the wrist strap

Step 5



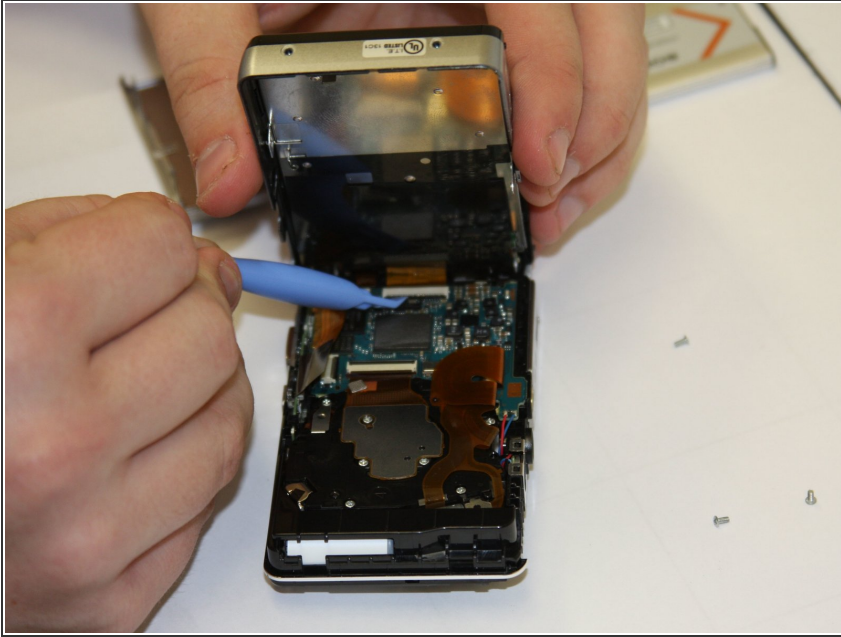
- Remove all 6 3mm outside screws

Step 6



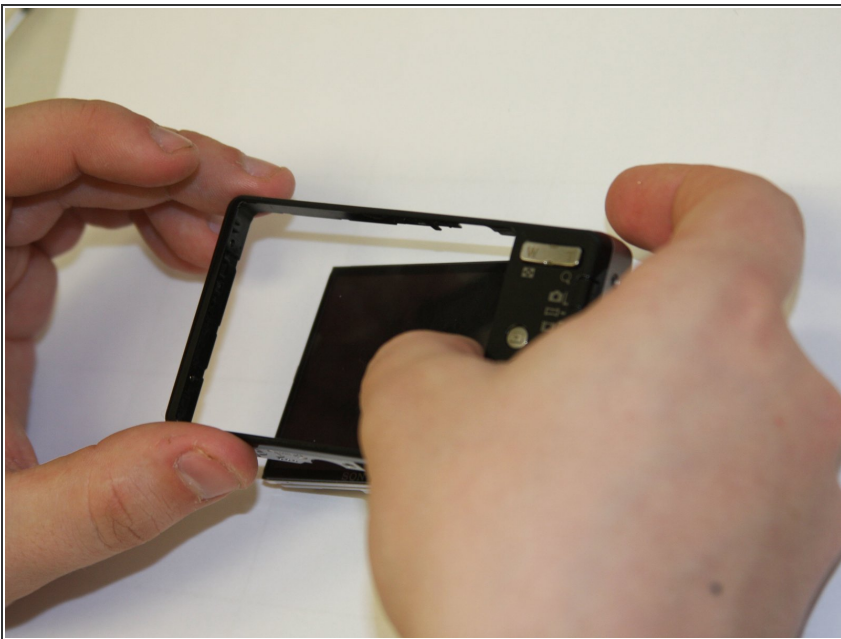
- Carefully pry the case apart.

Step 7 — LCD screen



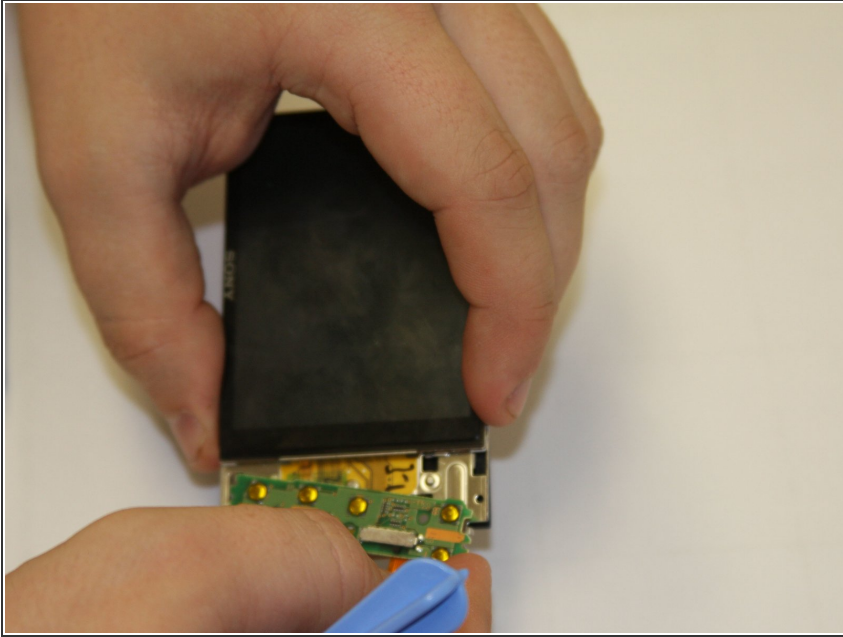
- Use spudger to delicately open wire contact.

Step 8



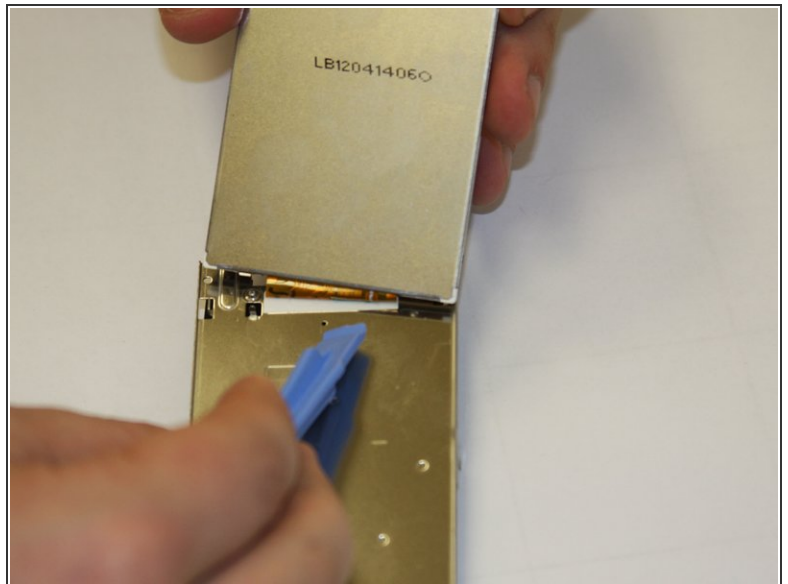
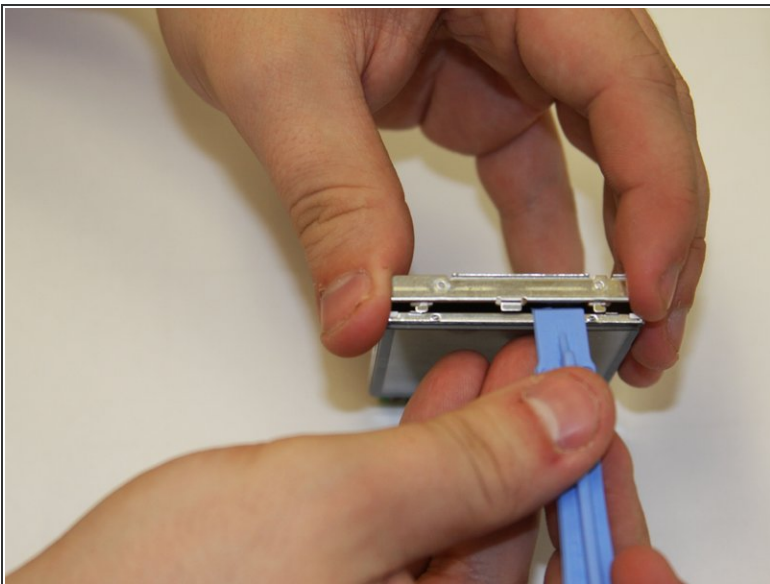
- Gently push the LCD screen out of back case.

Step 9



- Remove the button circuit board.

Step 10



- Use spudger to pry apart the LCD screen from the support bracket.

To reassemble your device, follow these instructions in reverse order.