



Sony Cyber-shot DSC-W730 Door Replacement

How to disassemble and replace a damaged door on the Sony DSC-W730 and DSC-W830 Digital Cameras.

Written By: Sales Cameraparts4you



INTRODUCTION

Does your door have an issue closing fully? Is your door damaged? It is time to replace it! This guide will show you all the steps required to replace your camera door. It is simple and a good DIY project. Save your money and fix your camera yourself.



TOOLS:

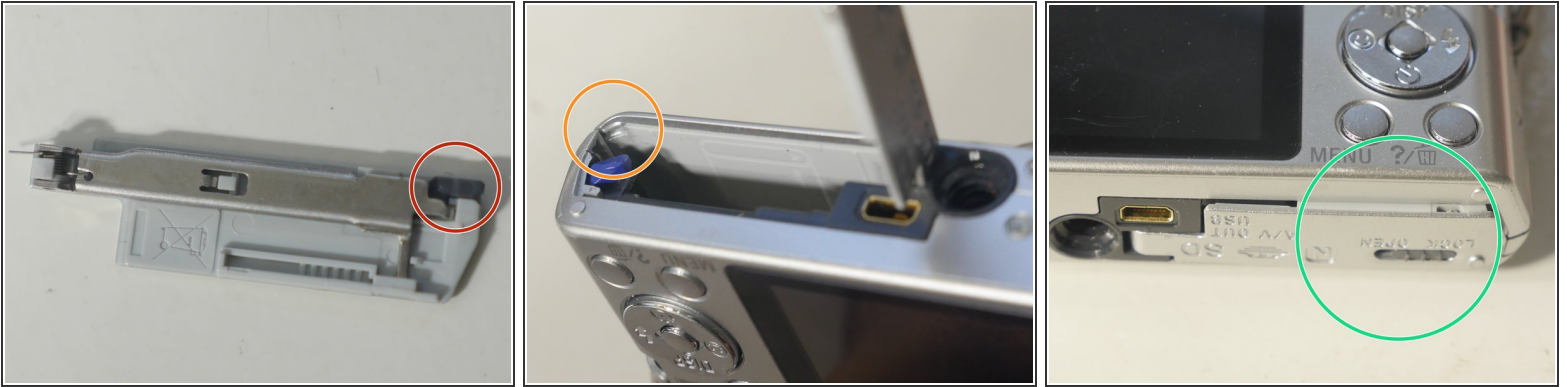
- [Phillips PH000 Screwdriver](#) (1)
- [Spudger](#) (1)



PARTS:

- [Sony DSC-W730 W830 door Replacement Silver](#) (1)
- [Sony DSC-w730 W830 door replacement Black](#) (1)

Step 1 — Determining your Problem



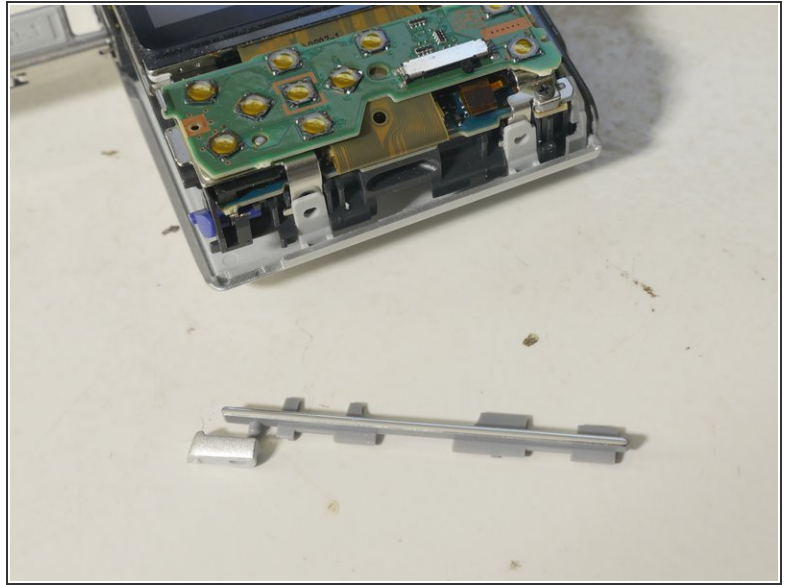
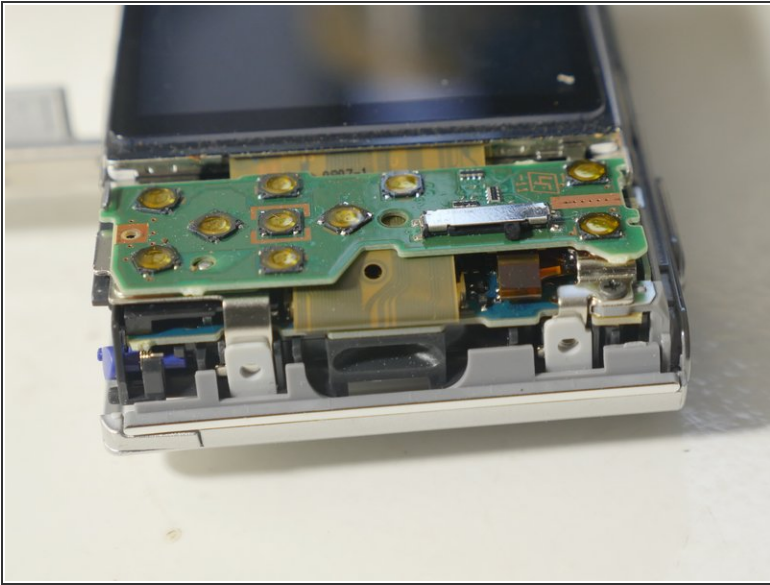
- make sure your door slider tab is in good shape. If the tab is damaged you will need a door replacement.
- make sure your tab notches are in good shape. If there is a problem with the notches then you will need to replace the front housing cover of the unit.
- If your door closes but looks like the unit in the 3rd picture then your door is either bent and damaged or the unit may not be assembled properly.

Step 2 — Removing Rear Housing Case



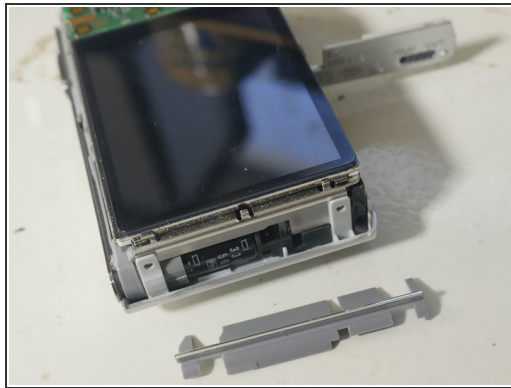
- Remove 6 external screws from the casing. They are all the same size. I recommend using Phillips screwdriver size PH000
- Remove the rear casing. You may need a spudger to release the tab. The tab is a depression style tab

Step 3



- remove side panels

Step 4



- Remove side panels and then remove front cover

Step 5



- Remove door rod
- Remove door assembly and replace with new door. Reverse process to assemble unit
- ⓘ There is a little hole shown in the picture where the wire spring goes into.. make sure the wire spring is inserted into that hole or your door will not function.

To reassemble your device, follow these instructions in reverse order.