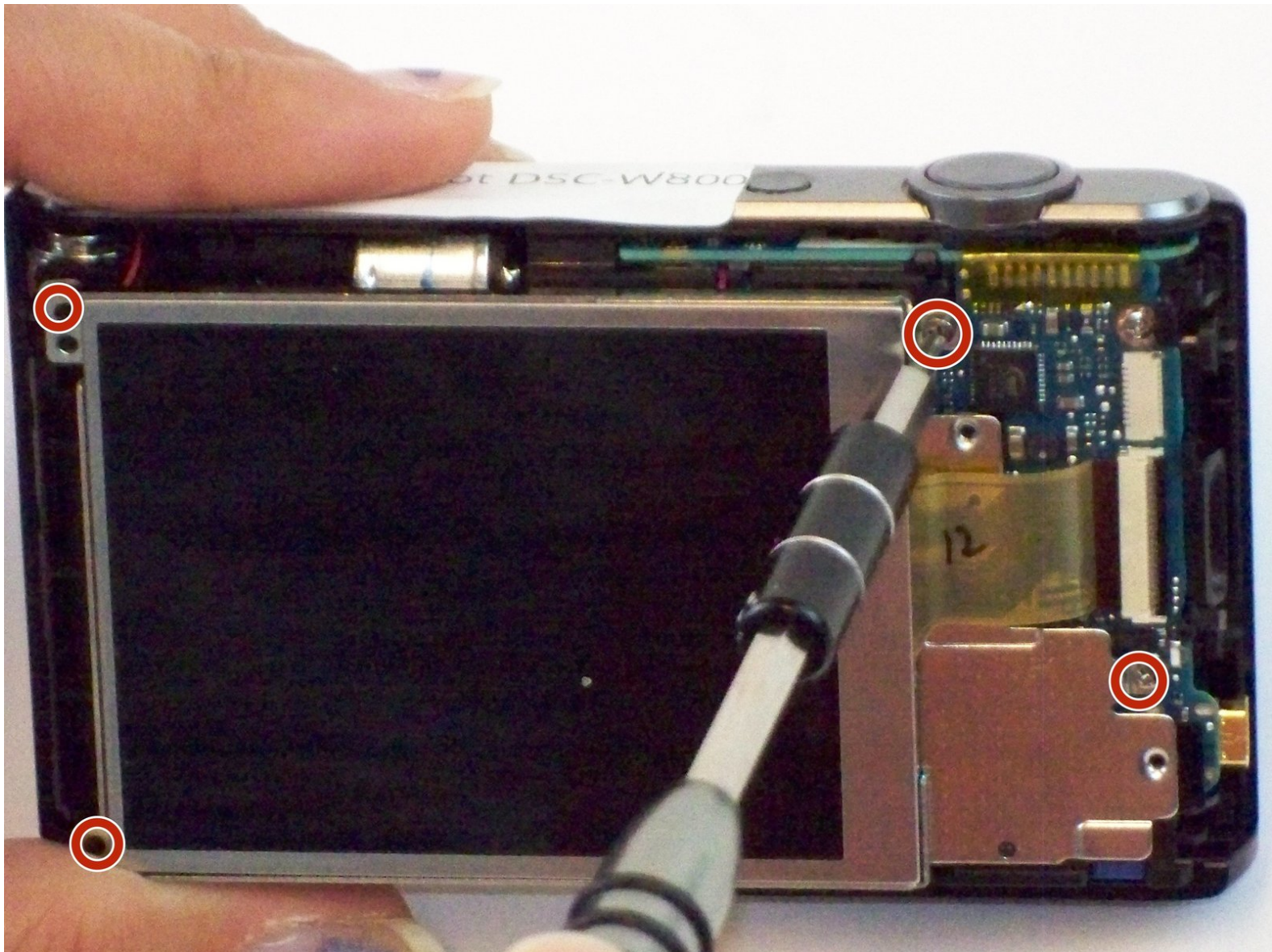




# Sony Cyber-shot DSC-W800 LCD Screen Replacement

Replace the malfunctioning LCD Screen on your Sony Cyber-shot DSC W800. This should restore your device to its default operating condition.

Written By: Thomas Campo



This document was generated on 2019-09-22 04:05:04 AM (MST).

## INTRODUCTION

Some things to consider before you work on the Sony Cyber-shot DSC W800 to replace the LCD Screen:

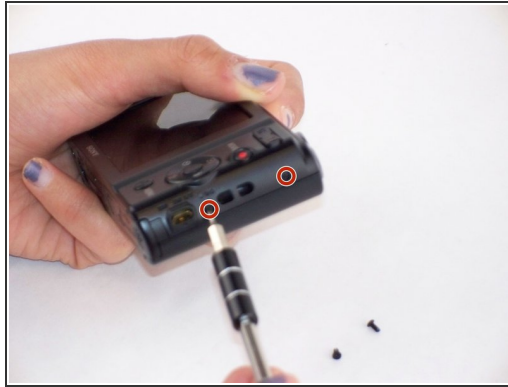
- The LCD Screen is an integral part of the device and any improper handling can cause issues in other parts of the camera.
- Be cautious when removing ribbon wires.
- Be sure to keep track of all pieces that are taken apart.



### TOOLS:

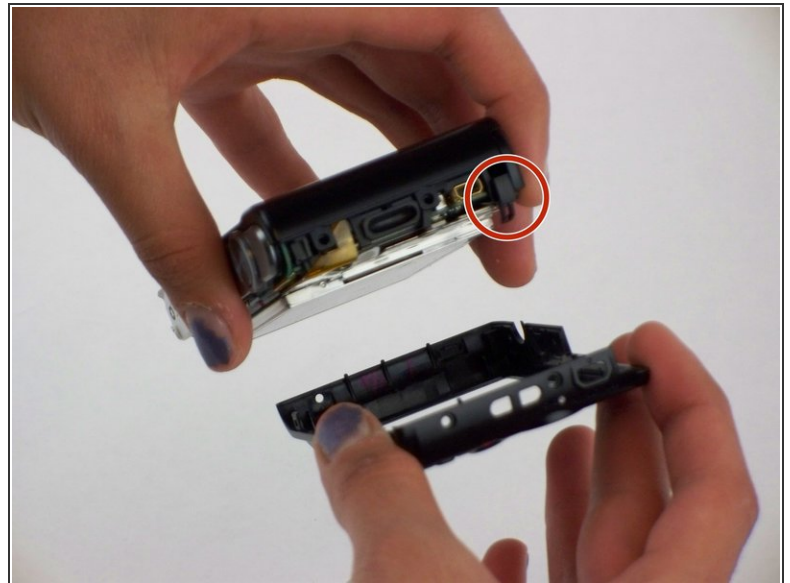
- [Spudger](#) (1)
  - [Tweezers](#) (1)
  - [Phillips #000 Screwdriver](#) (1)
-

## Step 1 — Button Board



- Remove the five 4.0 mm Phillips #000 screws on the back panel.

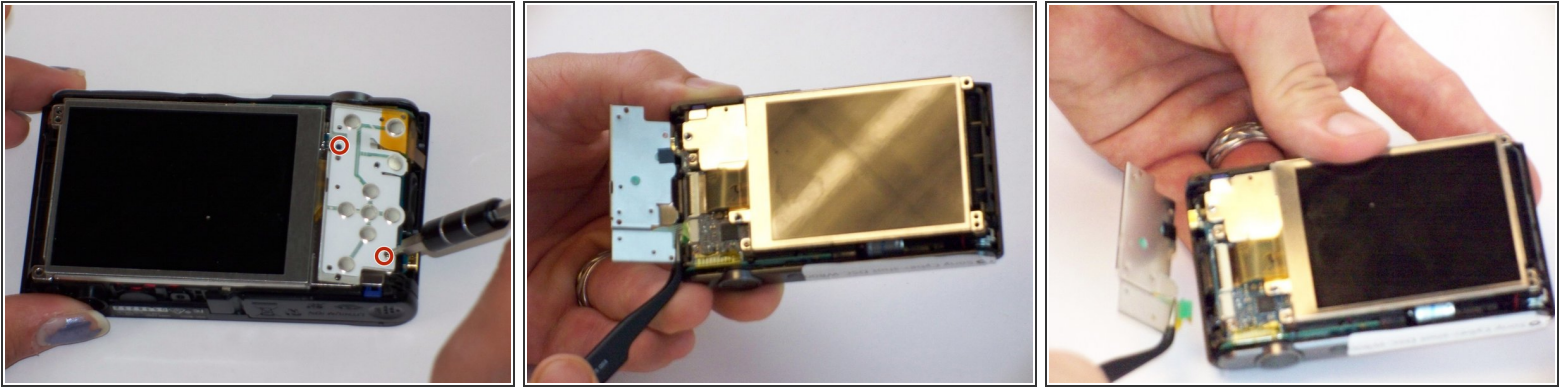
## Step 2



- Using the Spudger, remove the back panel from the device.
- The loose piece circled in the picture will most likely fall off the camera housing.



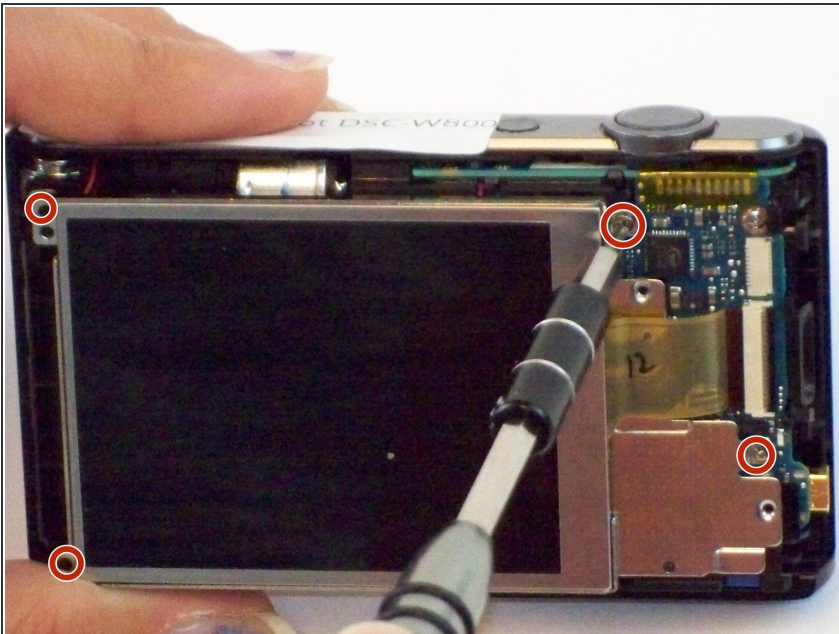
### Step 3



- Remove the two 2.15mm Phillips #000 screws from the circuit board.
- Gently pull on the ribbon wire from ZIF connector with the tweezers to remove the button board.

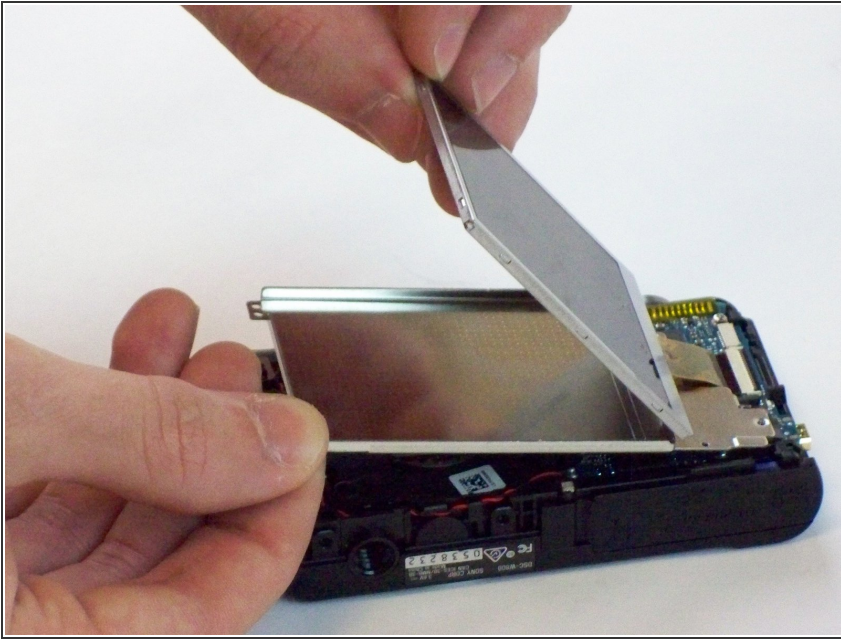
⚠ Ribbon wires can easily be damaged.

### Step 4 — LCD Screen



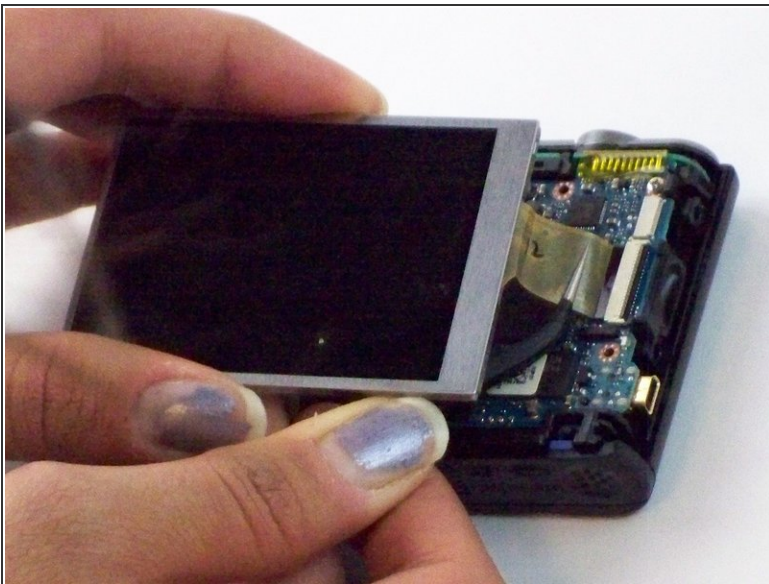
- Remove the four 3.75 mm Phillips #000 screws from the LCD back panel.

## Step 5



- Lift the back panel and separate the LCD Screen by prying it up.
- Remove the back panel.

## Step 6



- Gently pull on the ribbon wire disconnecting from the ZIF connector (connecting the LCD screen to the motherboard) with the tweezers.



Ribbon wires can be easily damaged.

To reassemble your device, follow these instructions in reverse order.