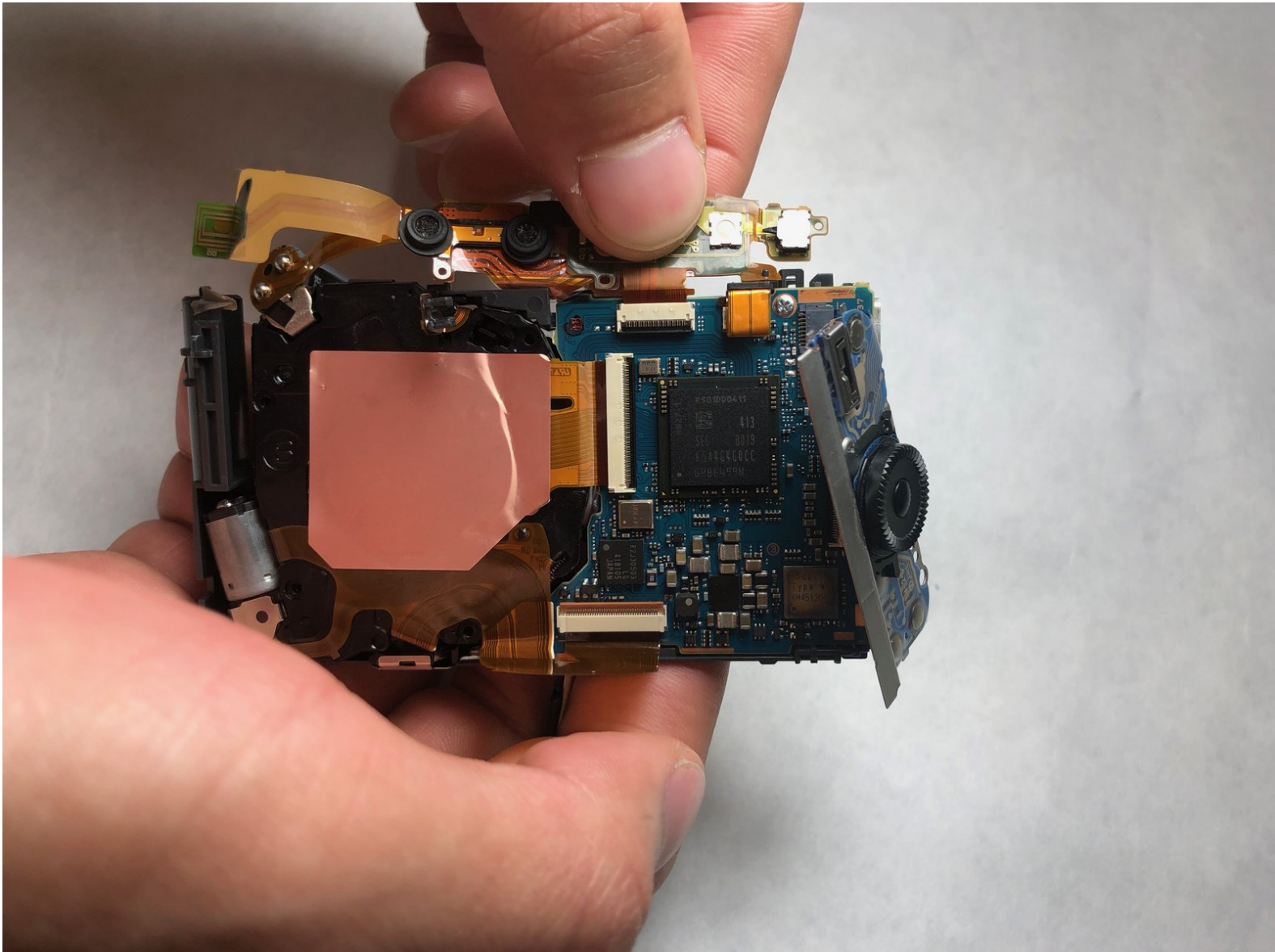




Sony Cyber-shot DSC-WX220 Flash Replacement

This guide shows the user how to replace the flash assembly.

Written By: Kate Glazer



INTRODUCTION

If the flash assembly is broken or not working properly, follow this guide to replace it.



TOOLS:

- [iFixit Opening Tools](#) (1)
 - [Phillips #00 Screwdriver](#) (1)
-

Step 1 — Battery



- Slide the gray switch from lock to open position.

Step 2



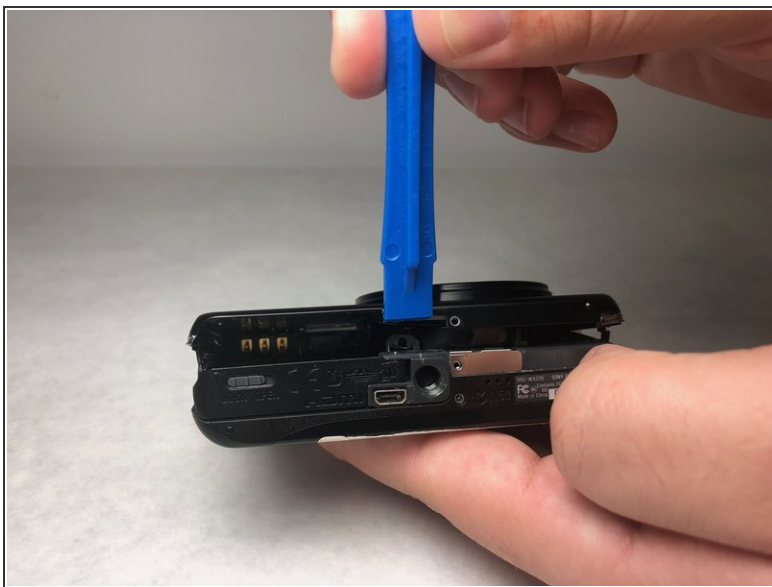
- Pull down on the blue tab to release the battery.

Step 3 — Outer Case



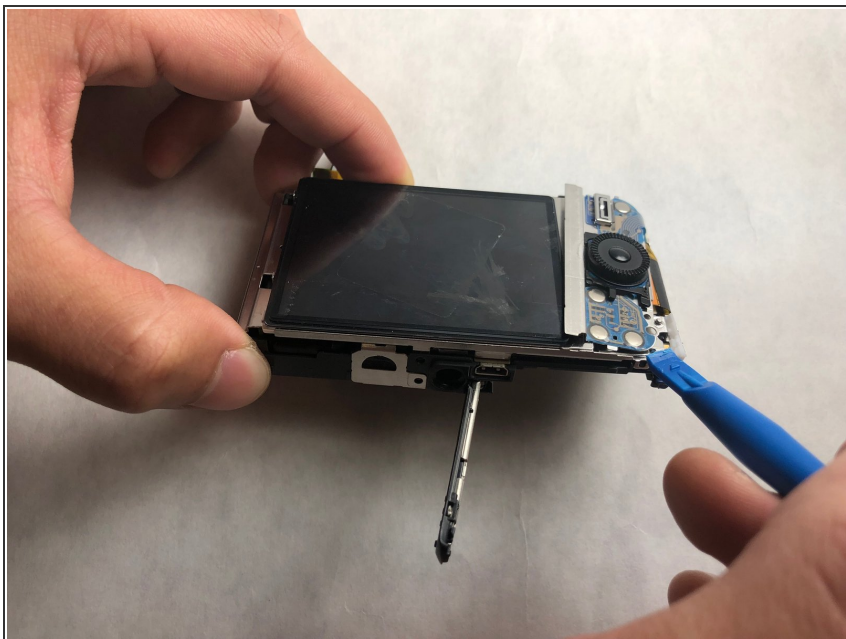
- Use a PH00 screwdriver to remove the five 3.5 mm screws.
- Use a PH00 screwdriver to remove the two 2.5 mm screws.

Step 4



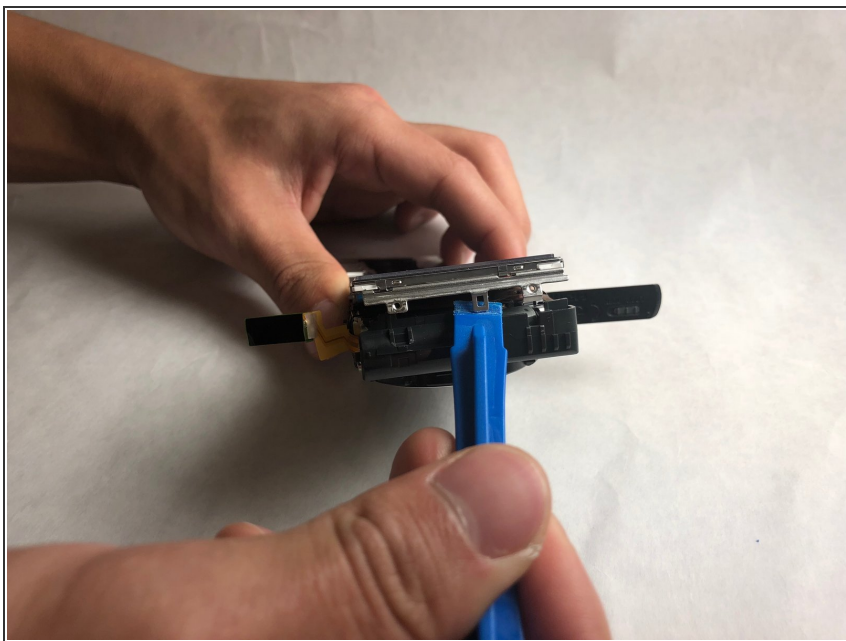
- Pry apart the case gently using a plastic opening tool.

Step 5 — Flash Assembly



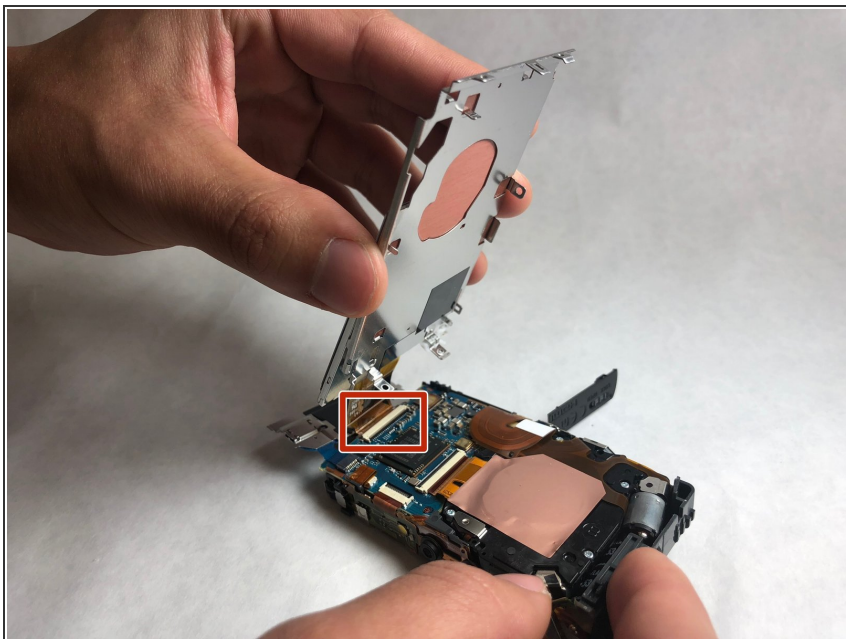
- Pry back the panel to the right of the screen using a plastic opening tool.

Step 6



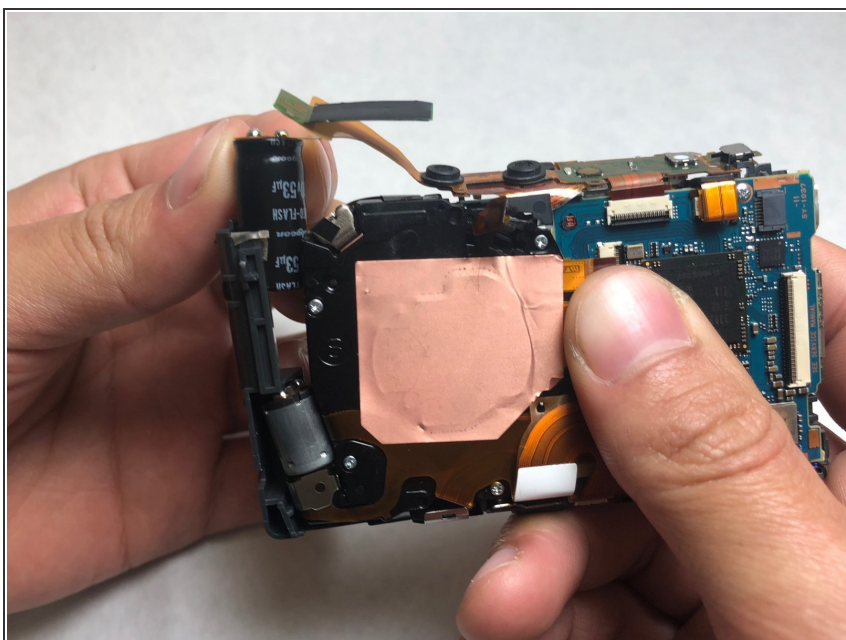
- Working on the left side of the screen, pry the metal panel off from the motherboard housing using a plastic opening tool.

Step 7



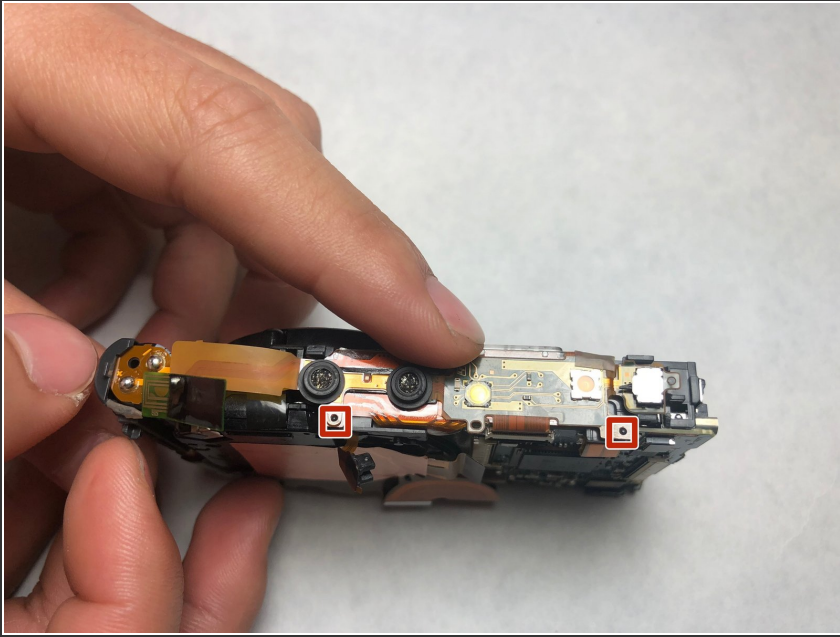
- Pull out the ZIF cable from the motherboard.
- ⓘ When removing the ZF cable, pull it straight out to avoid damaging the cable.

Step 8



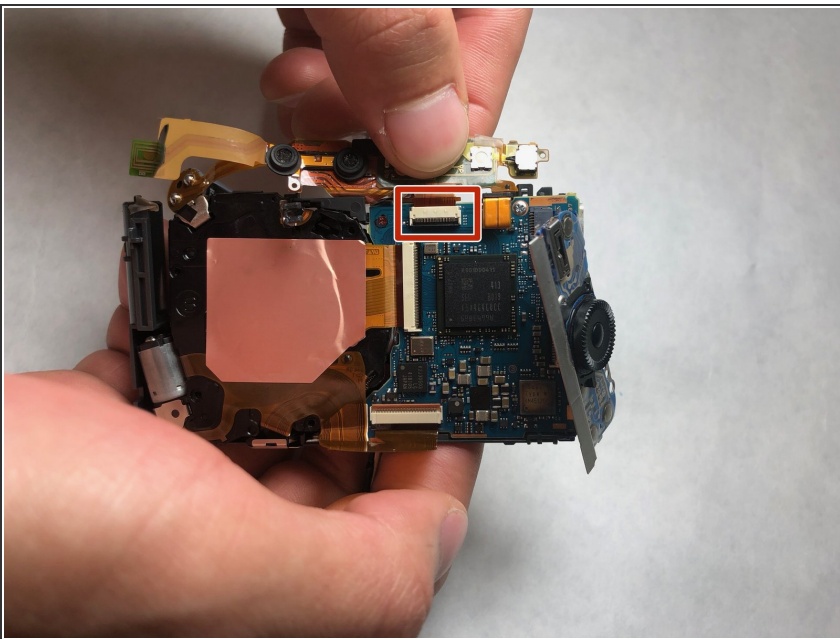
- Pull the capacitor out of the shell.
- ⚠ Be careful not to shock yourself on the capacitor(metal components on the top)

Step 9



- Unpin the flash assembly.

Step 10



- Lift flash component toward you and gently pull the ZIF cable up and away from the camera.

To reassemble your device, follow these instructions in reverse order.