



# Sony Cyber-shot DSC-WX350 Control Wheel Replacement

If the control wheel is not working, this guide will walk you through how to replace it.

Written By: Jenna Newman



---

## INTRODUCTION

The control wheel is the button that is used to switch between pictures you are viewing and change options under "Settings". If you cannot move between different pictures or you are unable to move to different options in your settings when pushing those buttons, the control wheel may be broken. This guide will walk you through how to take apart the camera and easily replace the control wheel strip.



### TOOLS:

- [iFixit Opening Tools](#) (1)
  - [Phillips #000 Screwdriver](#) (1)
-

## Step 1 — Control Wheel



- Begin with the battery cover closed.
- Remove 6 black Phillips 4 mm screws using the Ph000 head screwdriver tip from the bottom covering.

## Step 2



- Using the plastic opening tool, carefully insert it between the camera cover and the bottom cover. Pull it apart.
- ⚠ Using a plastic tool will prevent the device from being permanently damaged. Avoid using metal tools for this device.
- The bottom covering is attached by a hinge. Removing this part will also require a small amount of force to separate.



### Step 3



- Once the part is separated, move it toward the battery slot.
- Push the piece towards the camera to separate it from the hinge.

⚠ Do not pull up otherwise you will break the piece off.

### Step 4



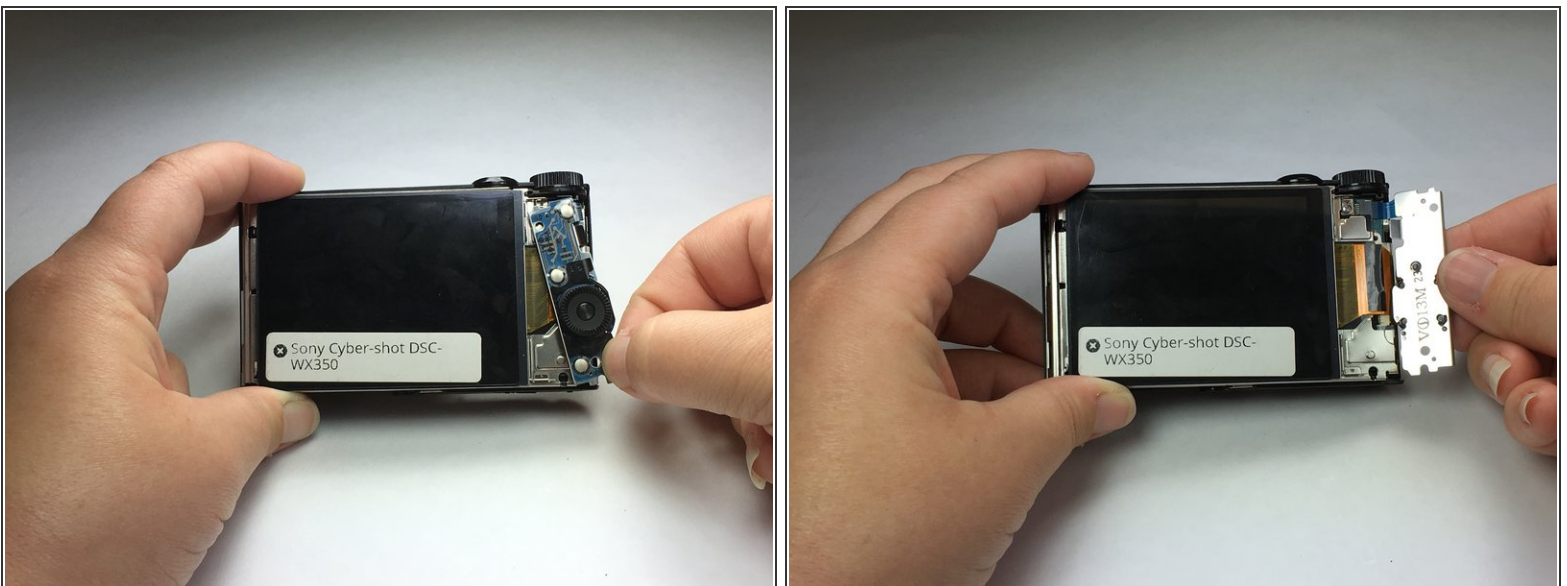
- Remove 1 black Phillips 4 mm screw using a Ph000 screwdriver tip from under battery cover.

## Step 5



- Separate the back of the camera frame from the body by taking apart the bottom and the sides of the camera.
- ❗ This will require a little force. You will feel tension and hear clicking noises. That is normal.

## Step 6



- To remove the control wheel from its position, grab the bottom of the part and pivot to the side and away from the camera.
- After the part is fully away from the camera, move the part downward and out. It should now be fully extended and able to bend at the band that is attached to the body.

## Step 7



- Pull blue band holding the control wheel away from the camera body.

To reassemble your device, follow these instructions in reverse order.