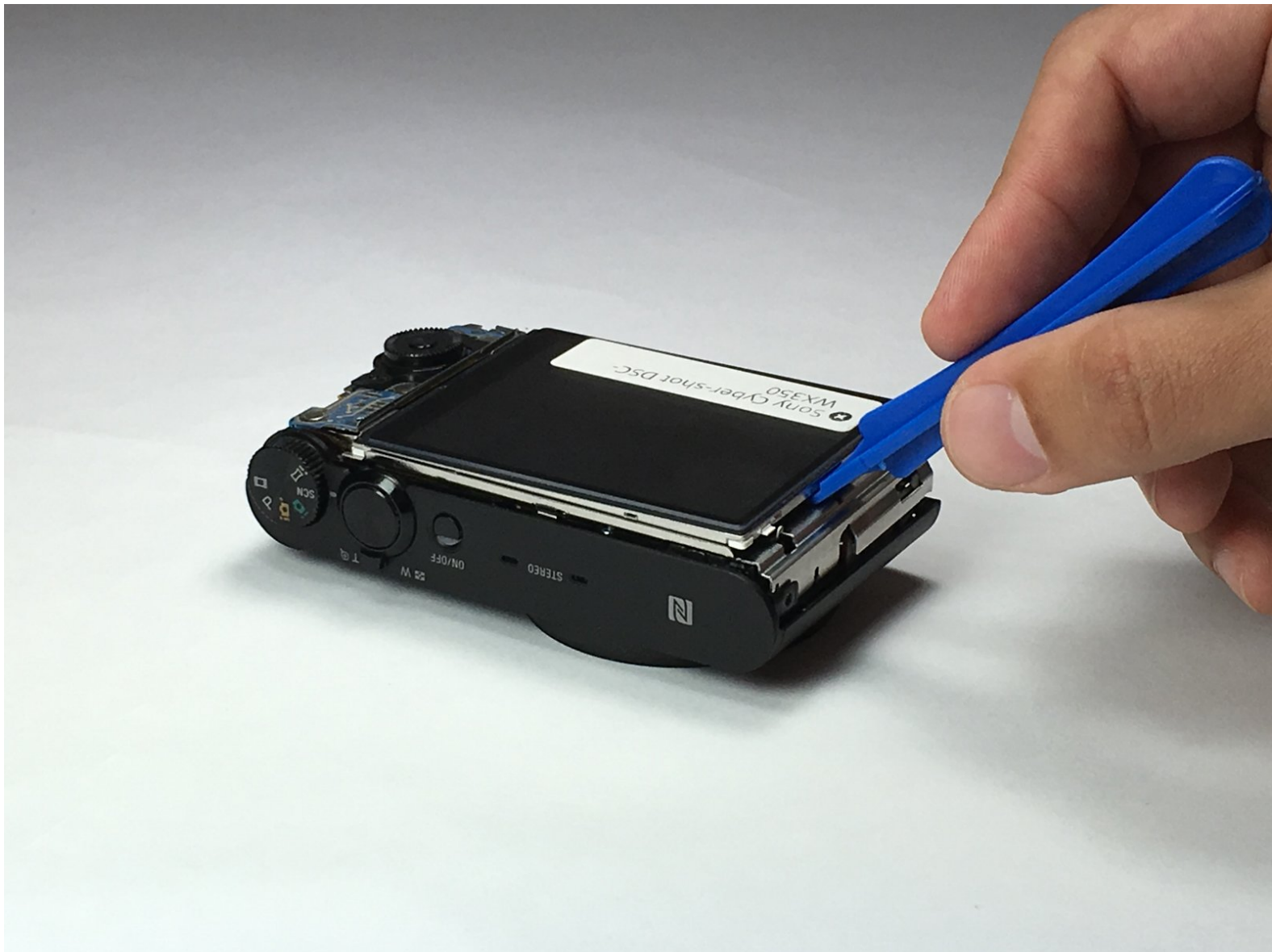




# Sony Cyber-shot DSC-WX350 LCD Screen Replacement

This guide is a step-by-step manual on how to replace the LCD Screen for the Sony Cyber-shot DSC-WX350 camera.

Written By: Jit Banerjee



## INTRODUCTION

This guide will help you to successfully replace the LCD screen from your Sony Cyber-shot DSC-WX350 camera. Handle circuits with care.



### TOOLS:

- [iFixit Opening Tools](#) (1)
  - [Phillips #000 Screwdriver](#) (1)
-

## Step 1 — LCD Screen



- Begin with the battery cover closed.
- Remove 6 black Phillips 4 mm screws using the Ph000 head screwdriver tip from the bottom covering.

## Step 2



- Using a plastic opening tool, carefully insert it between the camera cover and the bottom cover. Pull it apart.
- ⚠ Using a plastic tool will prevent the device from being permanently damaged. Avoid using metal tools for this device.
- The bottom covering is attached by a hinge. Removing this part will also require a small amount of force to separate.



### Step 3



- Remove 1 black Phillips 4 mm screw using a Ph000 screwdriver tip from under battery cover.

### Step 4




- Once the part is separated, move it toward the battery slot.
- Push the piece towards the camera to separate it from the hinge.

⚠ Do not pull up otherwise you will break the piece off.

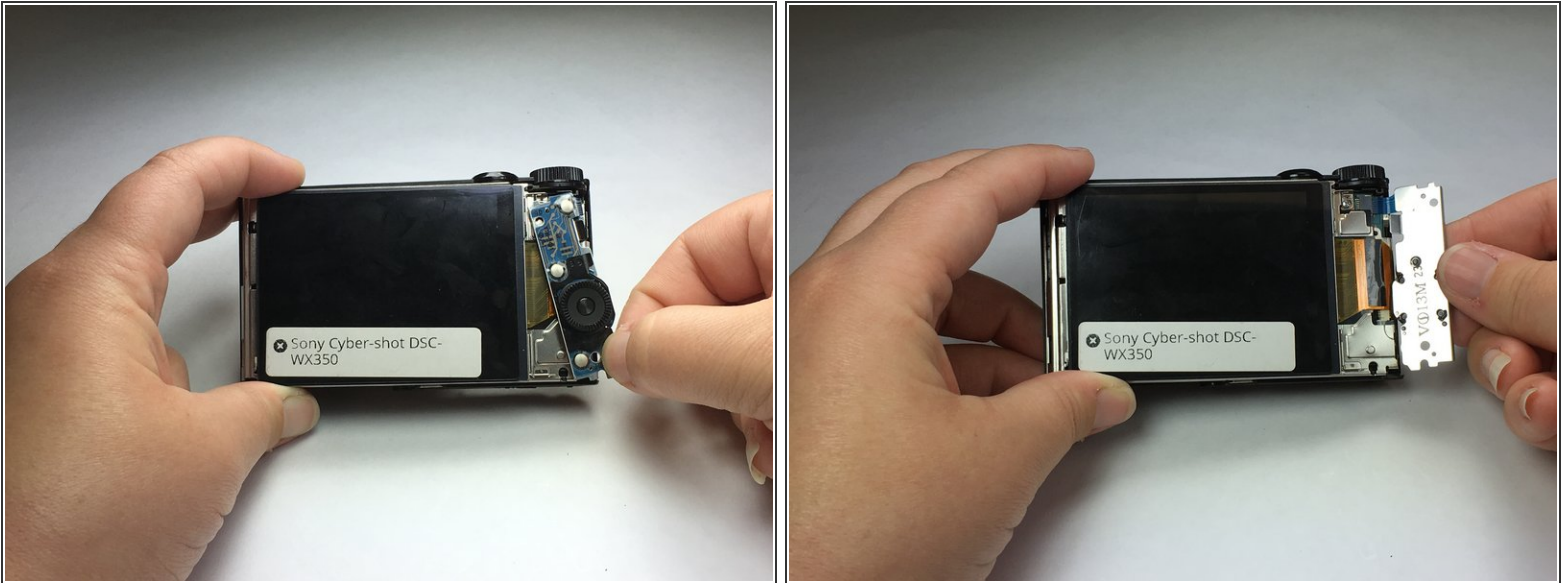
## Step 5



- Separate the back of the camera frame from the body by taking apart the bottom and the sides of the camera.

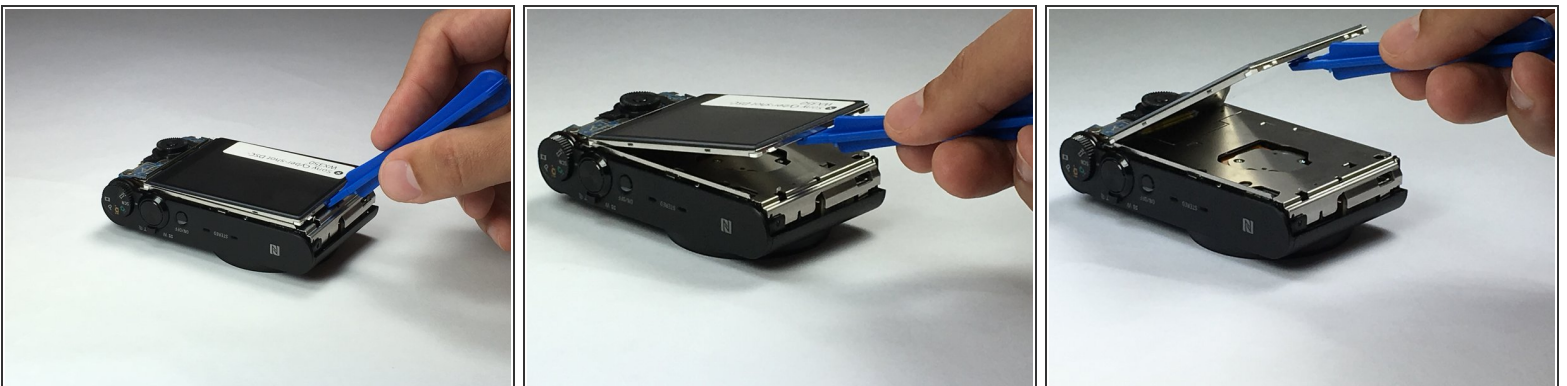
 This will require a little force. You will feel tension and hear clicking noises. That is normal.

## Step 6



- To remove the control wheel from its position, grab the bottom of the part and pivot to the side and away from the camera.
  - After the part is fully away from the camera, move the part downward and out. It should now be fully extended and able to bend at the band that is attached to the body.
- ⚠ DO NOT remove the control wheel panel from the camera. Simply move to the side in order to access the orange band holding the LCD screen to the motherboard.

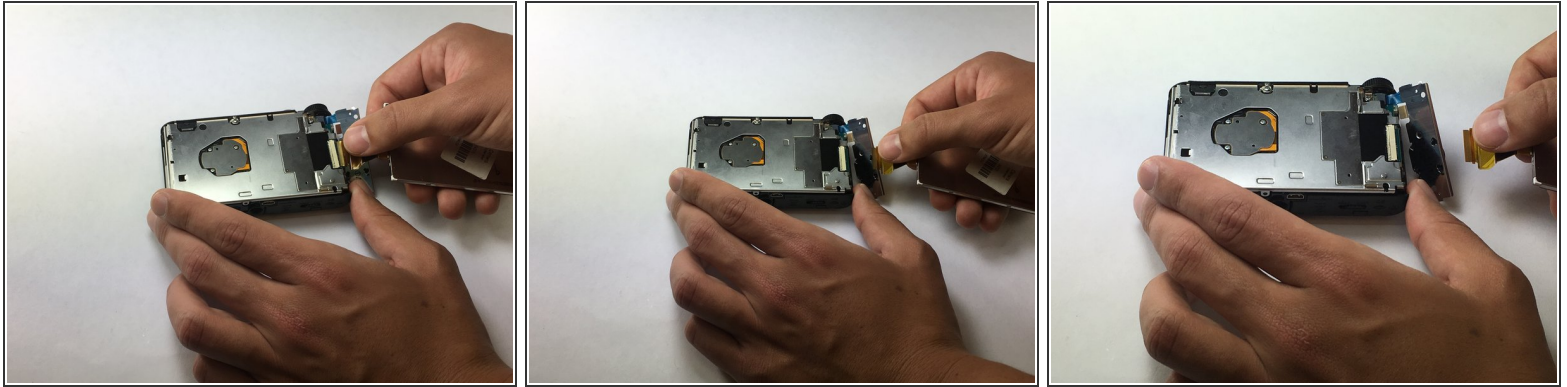
## Step 7



- With a plastic opening tool, lift the LCD screen from the camera body.



## Step 8



- Set the LCD screen to the side
  - Grab the orange band holding the LCD screen and gently pull to detach from the camera body.
- ⚠ Do not pull the white strip on top of the orange band. This is part of the circuit inside the camera and detaching this piece could permanently damage your camera.

To reassemble your device, follow these instructions in reverse order.