



Sony Cyber-shot DSC-WX350 Lens Assembly Replacement

This will help you replace the lens assembly.

Written By: Joshua R Hammel



INTRODUCTION

This guide will teach you how to replace a lens assembly in a Sony Cyber Shot DSC-WX350



TOOLS:

- [Phillips #00 Screwdriver](#) (1)
 - [iFixit Opening Tools](#) (1)
-

Step 1 — Lens Assembly



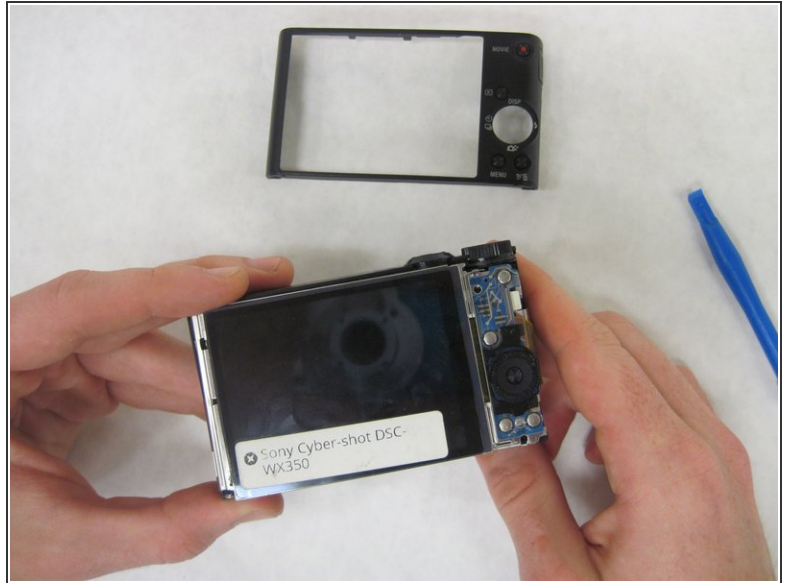
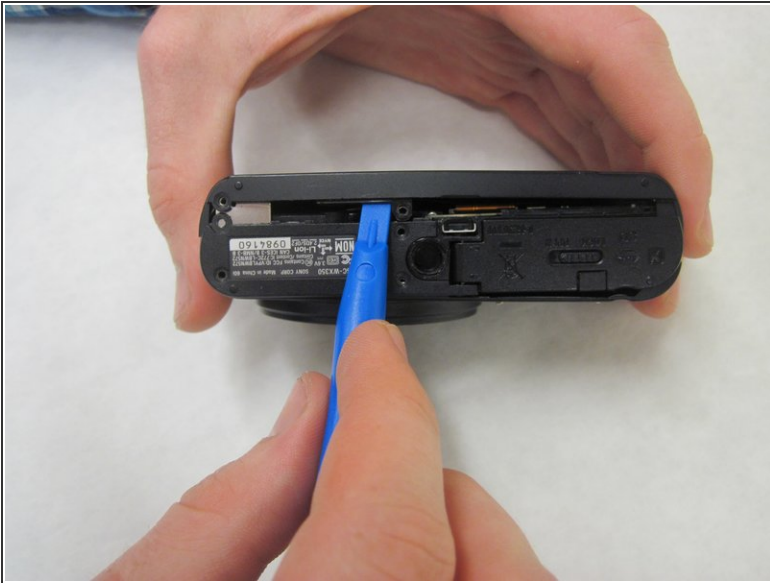
- Use the J00 screwdriver to take out the four 4mm black screws on the bottom and both sides of the camera.

Step 2



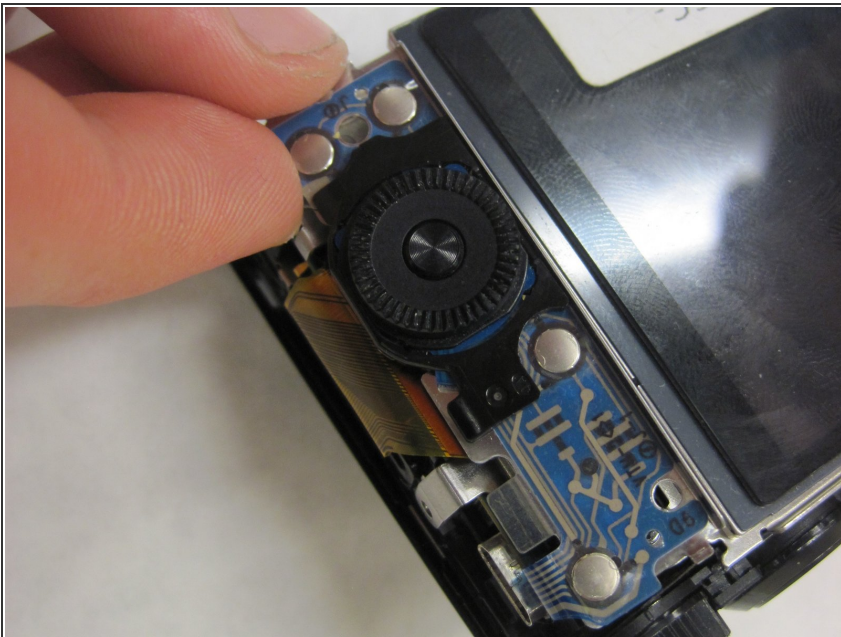
- On the bottom of the camera slide the button over to open the battery case. Inside the battery opening use the J00 screwdriver to take out the single 4mm black screw.

Step 3



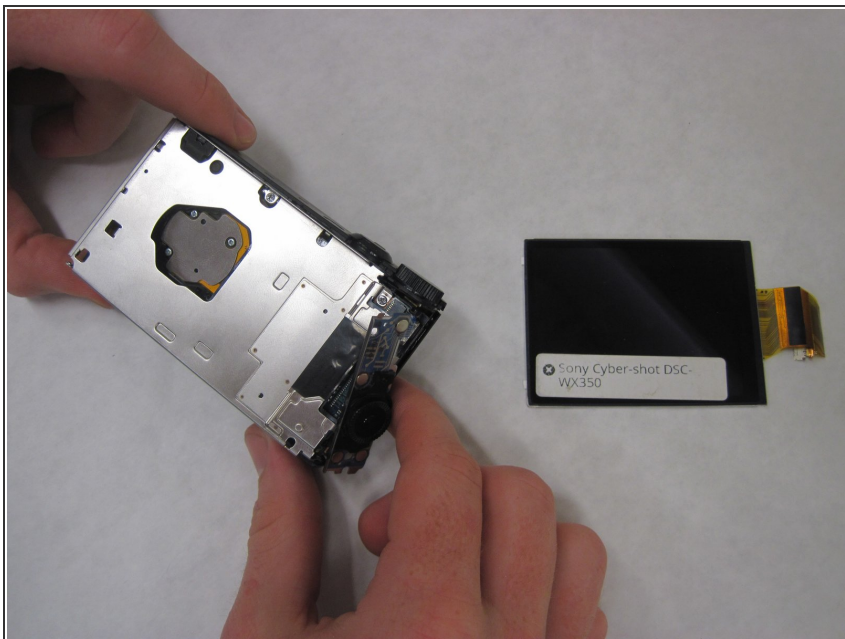
- Use the plastic opening tool to pry open the back cover off.

Step 4



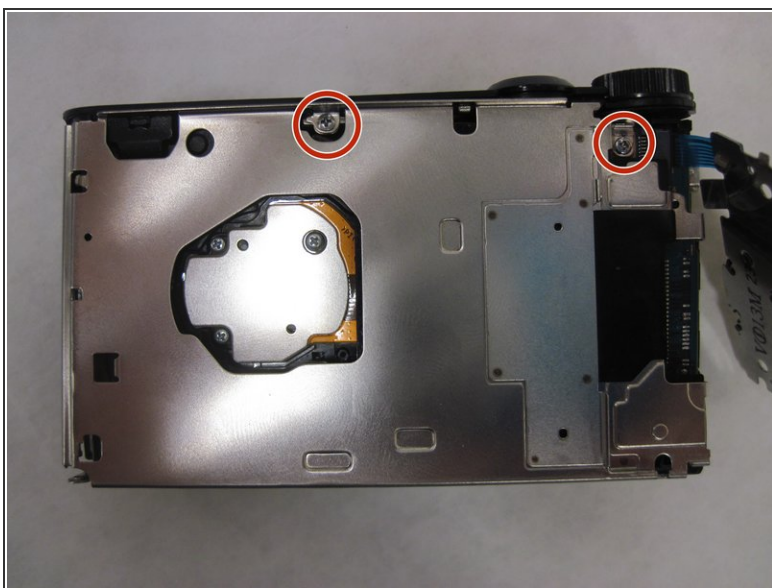
- Use your fingers to slide out the controller wheel board.

Step 5



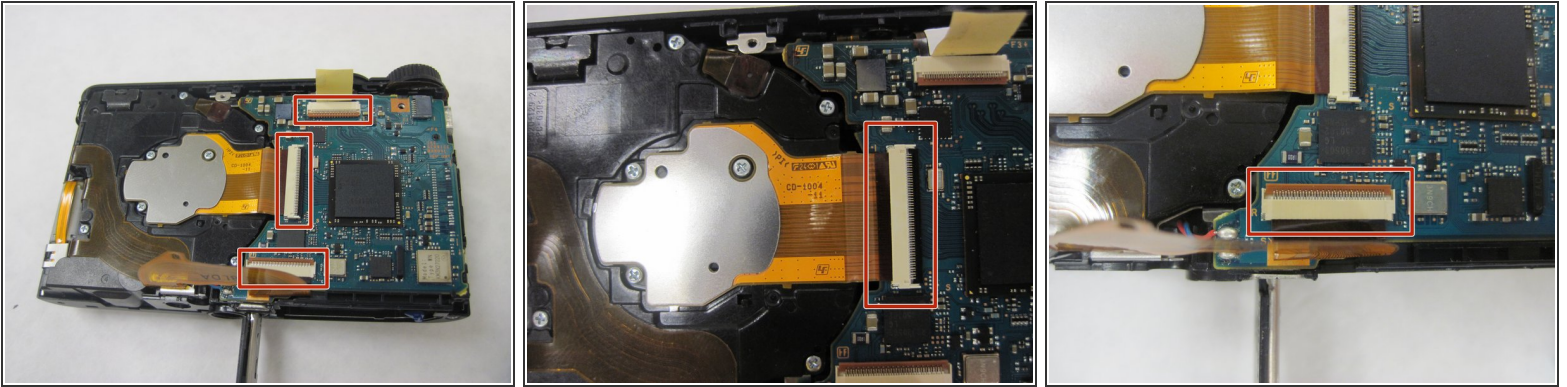
- Take the LCD off by undoing the zif and sliding it out.

Step 6



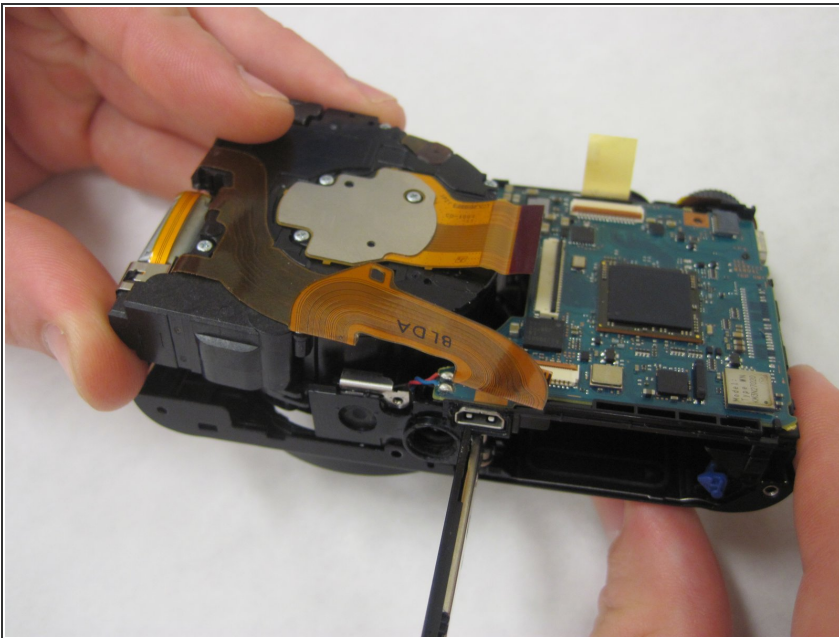
- Once the LCD is off use the J00 screwdriver to take out the two 4mm silver screws. Once the screws are taken out pull off the piece with your fingers.

Step 7



- Now take out the 3 zifs by first opening the zif latch with your fingers and then sliding it out.

Step 8



- Carefully remove the lens assembly from the camera.

To reassemble your device, follow these instructions in reverse order.