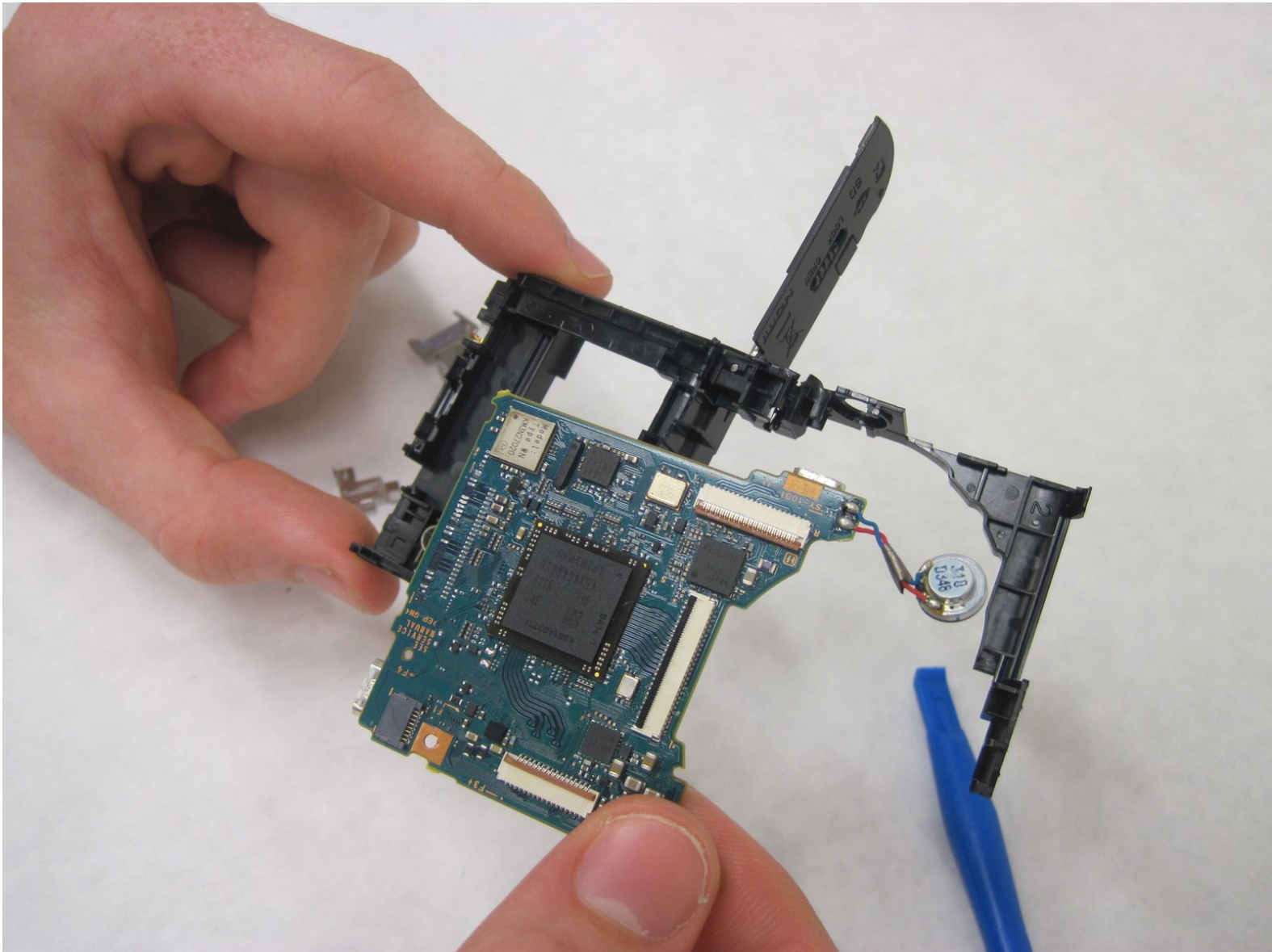




Sony Cyber-shot DSC-WX350 Motherboard Replacement

How to remove the motherboard from the Sony Cyber-shot DSC-WX350.

Written By: Ryan Speitel



INTRODUCTION

This guide will help you remove the motherboard in the Sony Cyber-shot DSC-WX350 camera for replacement.



TOOLS:

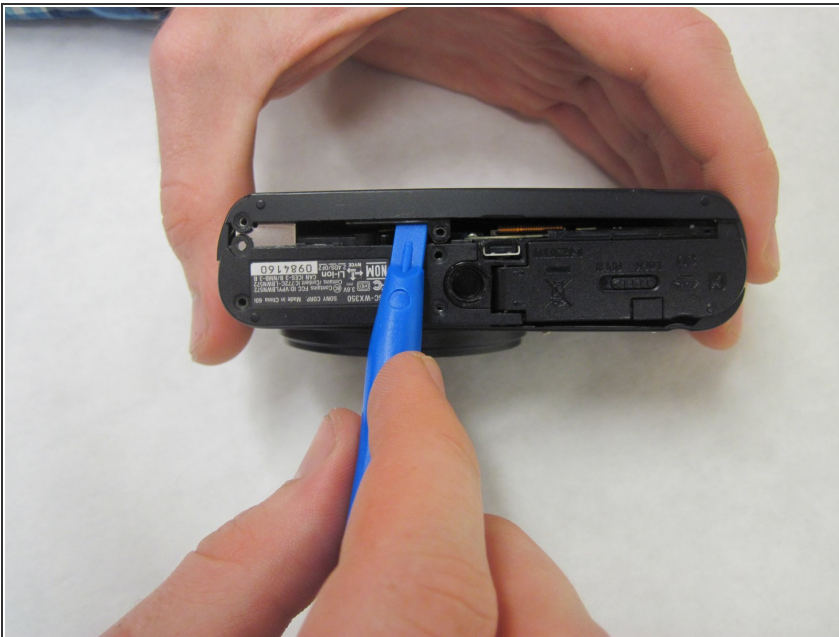
- [Phillips #00 Screwdriver](#) (1)
 - [iFixit Opening Tools](#) (1)
-

Step 1 — Motherboard



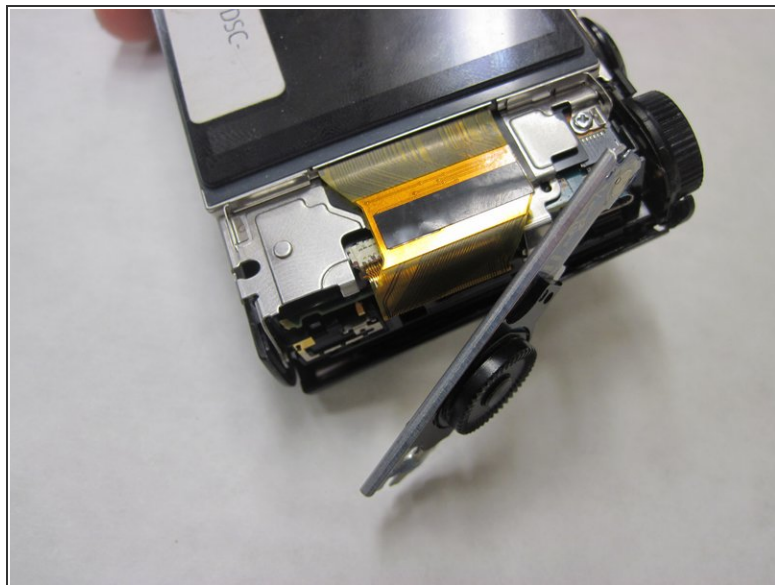
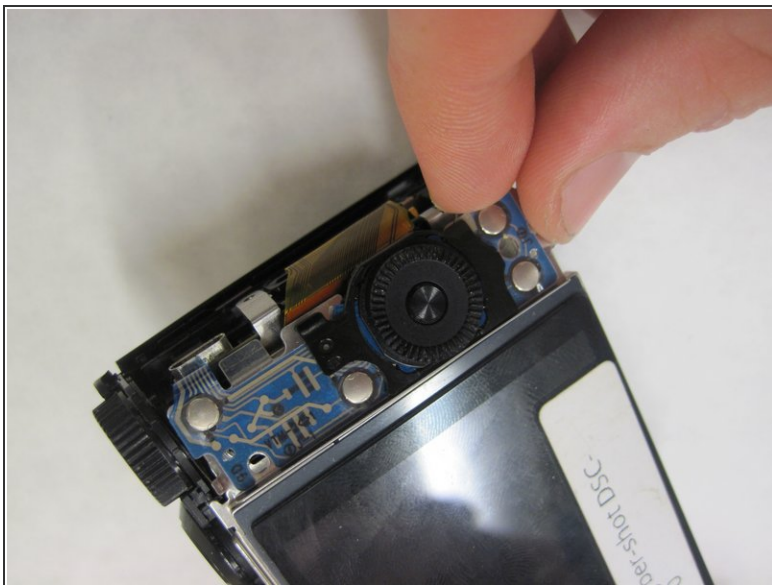
- Remove 6 Phillips 4mm screws from the bottom and sides of the device.
- Remove the 1 Phillips 4mm screw from under the battery cover.

Step 2



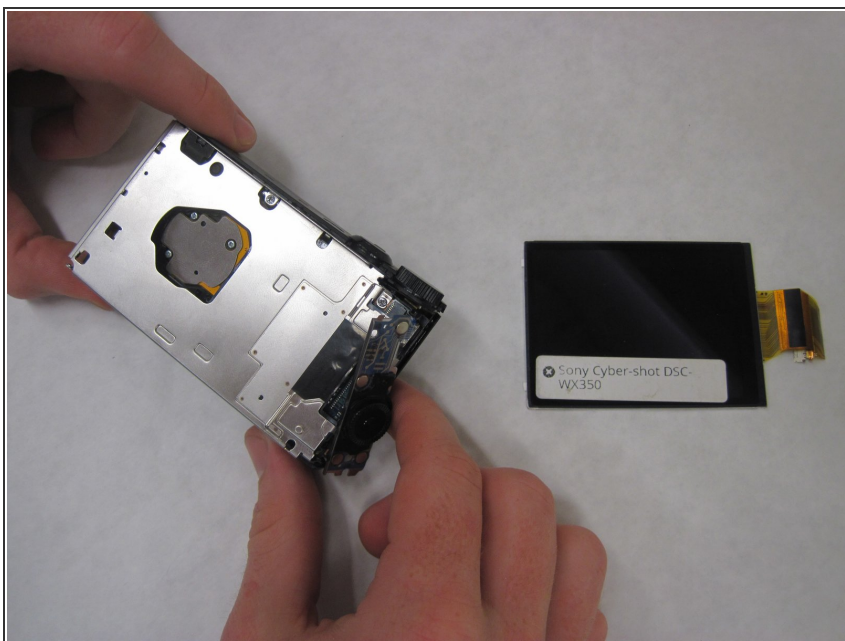
- Insert the plastic opening tool between the back cover and the bottom plate. Gently pry the cover off.

Step 3



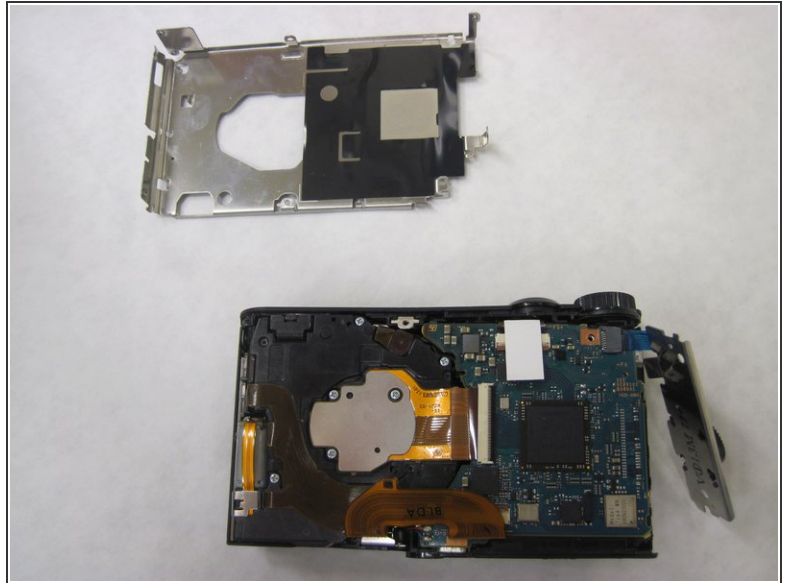
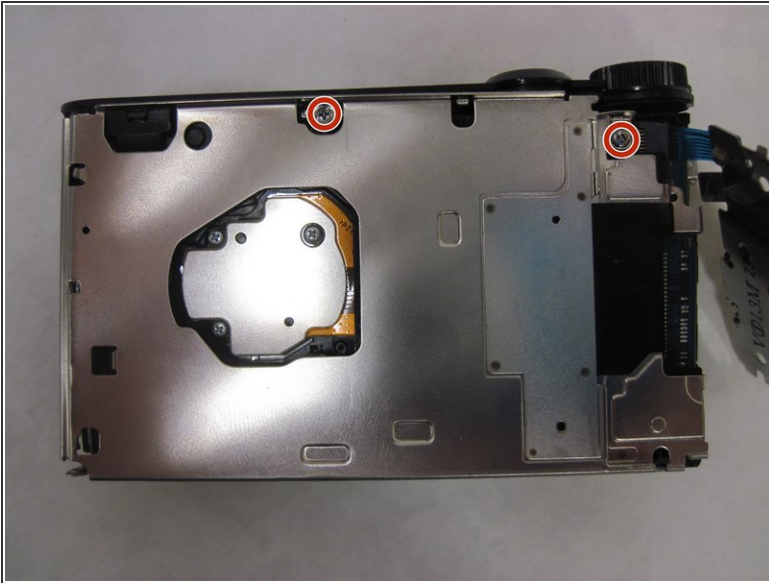
- Use your fingers to slide out the controller wheel board.

Step 4



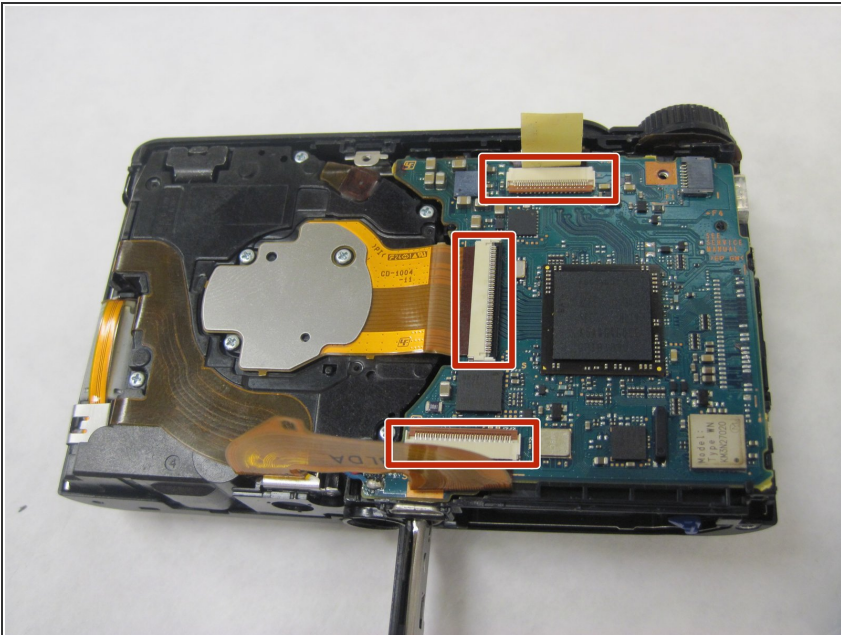
- On the left side of the camera, pull the LCD off the back plate.
- There will be a ZIF connector by the control wheel, release the connector and remove the LCD.

Step 5



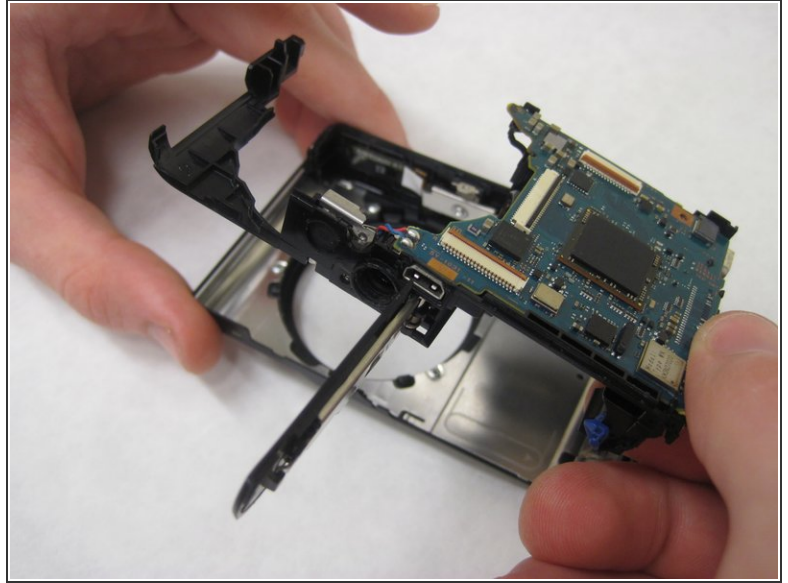
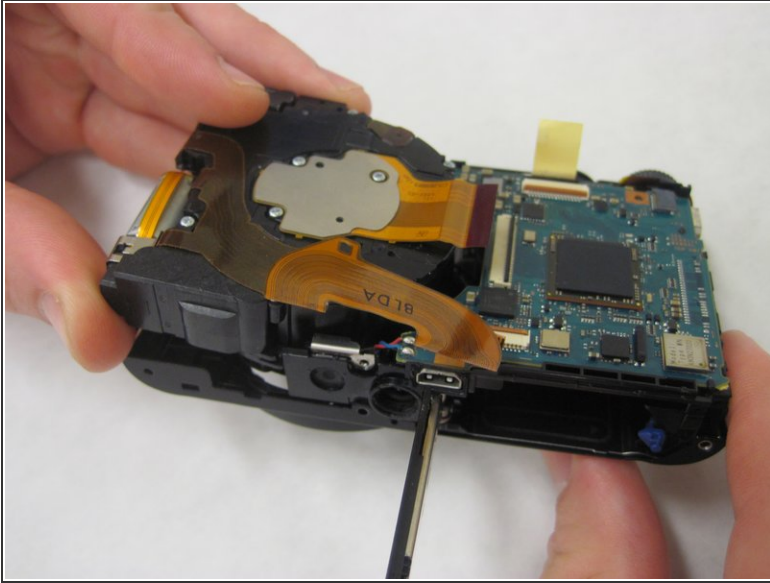
- Once the LCD is off use the J00 screwdriver to take out the two 4mm silver screws. Once the screws are taken out pull off the piece with your fingers.

Step 6



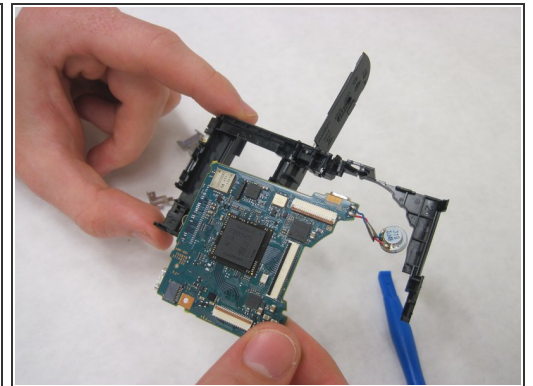
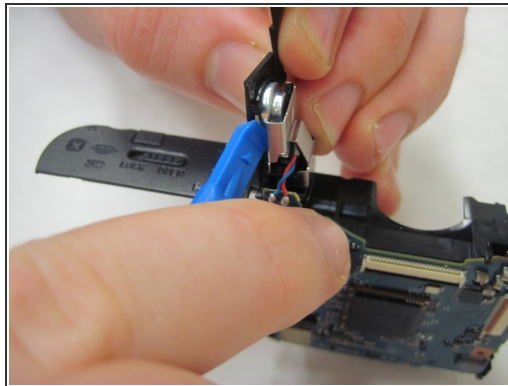
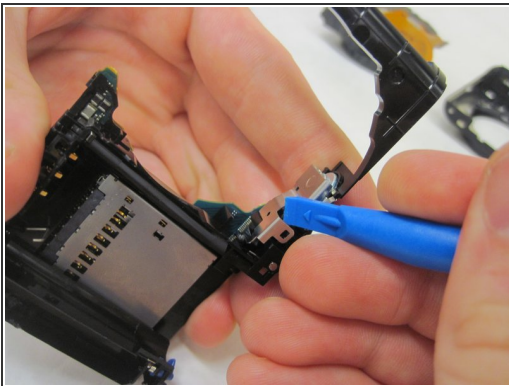
- Remove the three ZIFs connected to the motherboard. The top is found under a piece of tape.

Step 7



- Remove the lens assembly and motherboard from the front of the case.
- The lens assembly should separate when removing the front.

Step 8



- On the backside of the motherboard, a silver clip is holding the motherboard to the plastic shell. Insert the plastic opening tool under the clip and pry gently until it releases.

To reassemble your device, follow these instructions in reverse order.