



Sony Cyber-shot DSC-WX80 Lens Replacement

Lenses can become jammed, scratched, or shorted. This guide will walk you through how to replace the lens when these problems occur.

Written By: Scott Grambo



INTRODUCTION

Make sure you have the necessary tools in order to complete the lens replacement for the Sony Cyber Shot WX80 and be sure to have a steady hand when dealing with the smaller and more fragile parts.



TOOLS:

- [Phillips #00 Screwdriver](#) (1)
- [Spudger](#) (1)
- [iFixit Opening Tools](#) (1)
- [Magnetic Project Mat](#) (1)
- [Tweezers](#) (1)



PARTS:

- [Replacement Sony Cyber Shot WX80 Lens](#) (1)

Step 1 — LCD Screen



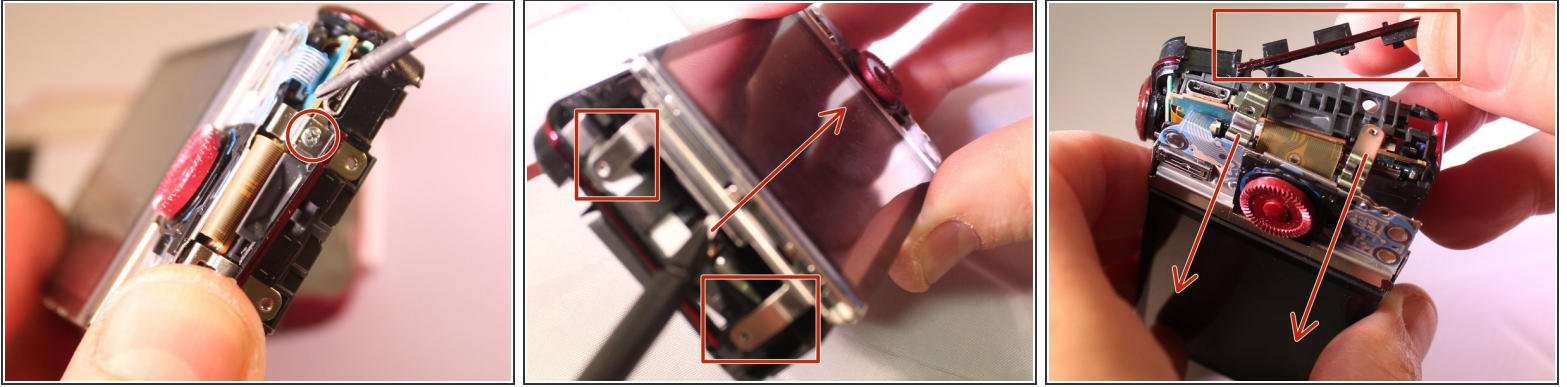
- Begin by removing all six #00 40mm by 10mm black screws holding the outer frame together with the Phillips #00 Precision Screwdriver.
- ⓘ Remember to keep track of all screws as they are small and very easy to lose

Step 2



- ⓘ Take note of the small free moving flap near the battery port seen in the first of the three photos. Be sure to store the free moving flap in a safe place.
- Pry the front cover off gently. Use a plastic opening tool if available.
- Now pry the back cover off gently, using a plastic opening tool if available.

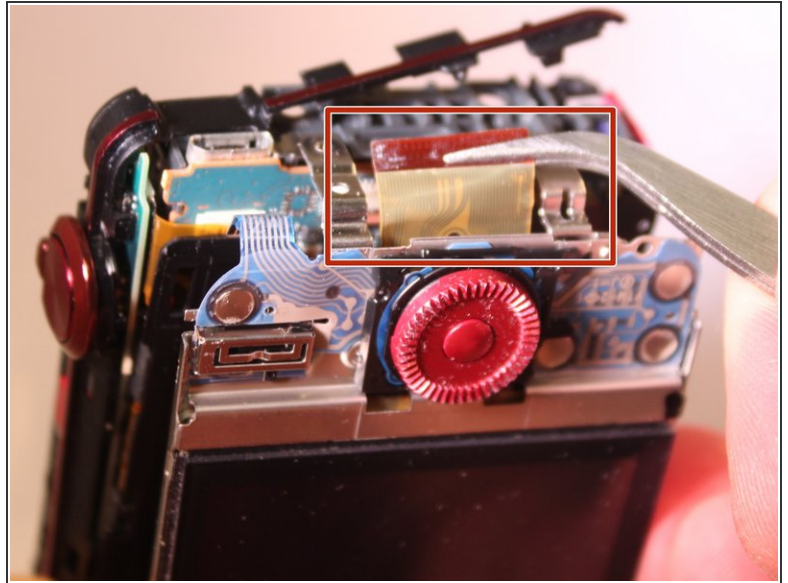
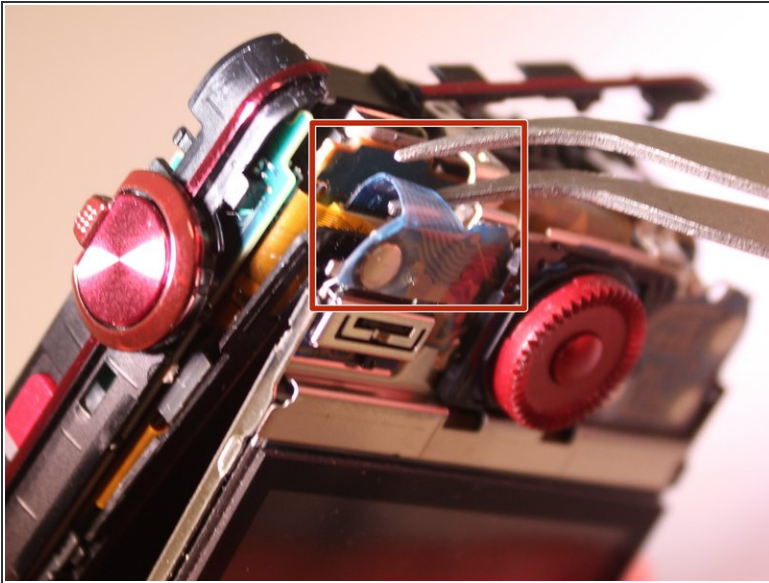
Step 3



- Remove the #00 screw from the right hand side (from the LCD screen side) which is adjacent to the master control dial. Reference the first image.
- Use a spudger or plastic opening tools to pry up the LCD screen and free the two metal tangs on the left side. Reference the second image.
- Lift up two more metal tabs held down by a thin red plastic strap on the right (master control dial) side. Reference the third image.

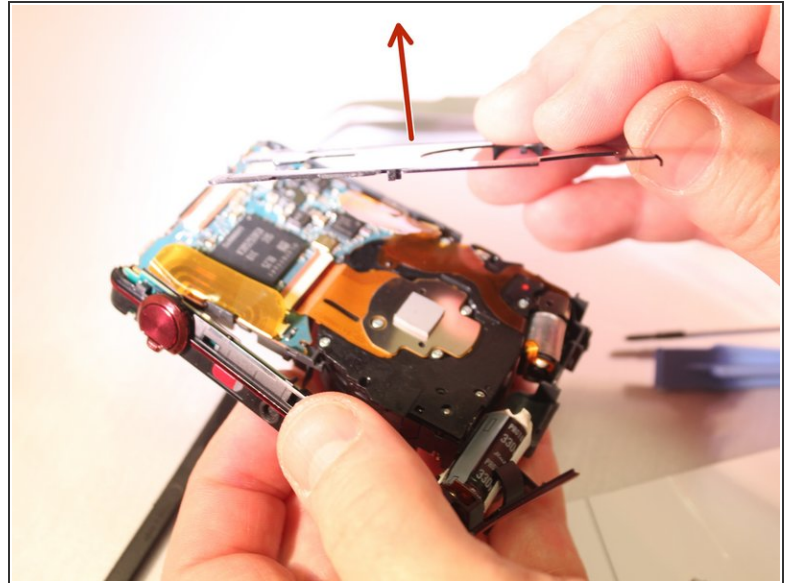
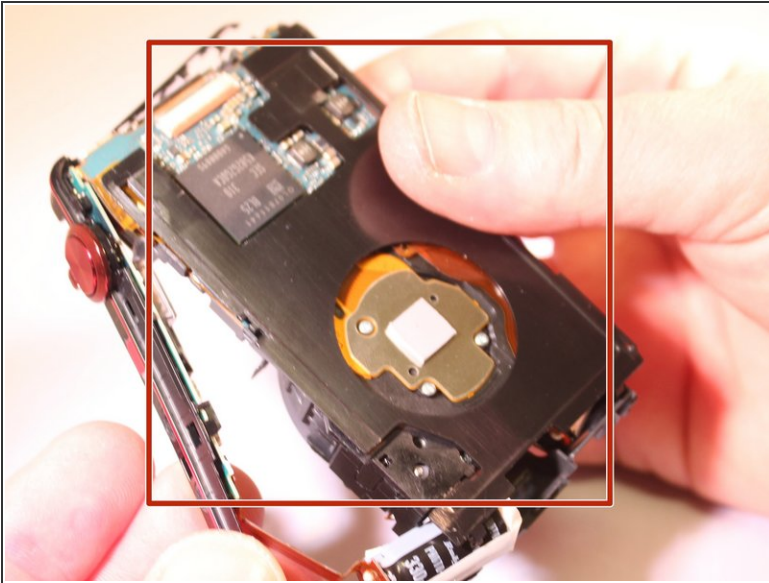
⚠ The thin red plastic strap is very fragile.

Step 4



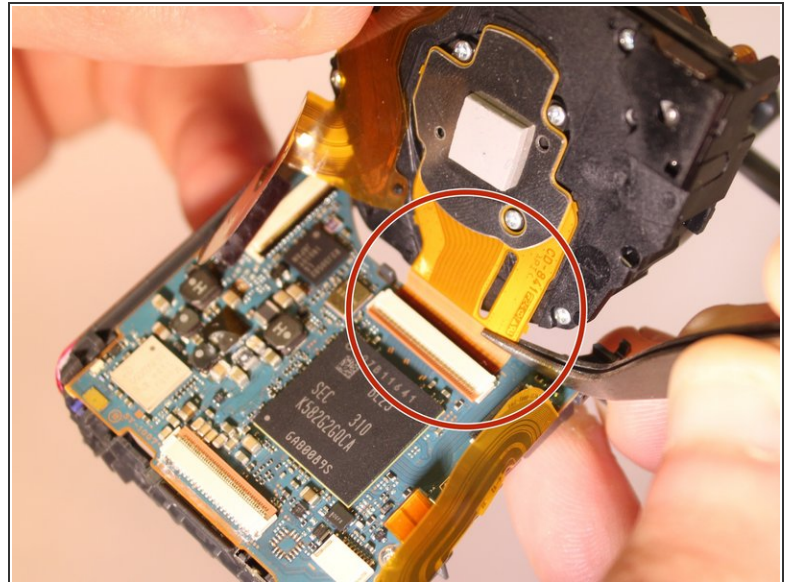
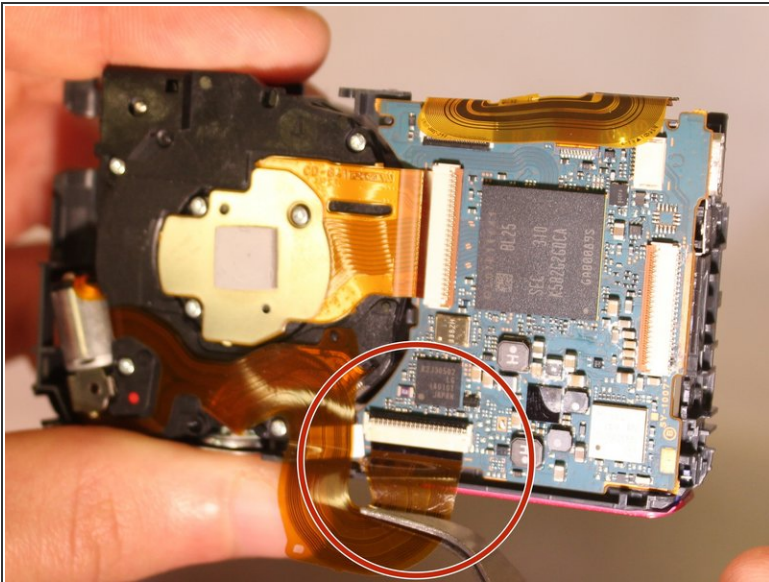
- Using a pair of tweezers, remove the blue ribbon from its connection located toward to the top right of the device. Reference the first image.
- Using a pair of tweezers, remove the gold ribbon from its connection located to the right of the removed blue ribbon. Reference the second image.
- Your LCD screen is now removed and you can replace it!

Step 5 — Lens



- After the LCD screen has been removed there is a black metal plate that can be pulled off revealing the motherboard and the lens.

Step 6



- To separate the motherboard from the lens there are two ribbon cables that need to be pulled out of their ports using tweezers.
- Now that the Lens has been removed from the motherboard you can replace it!

To reassemble your device, follow these instructions in reverse order.