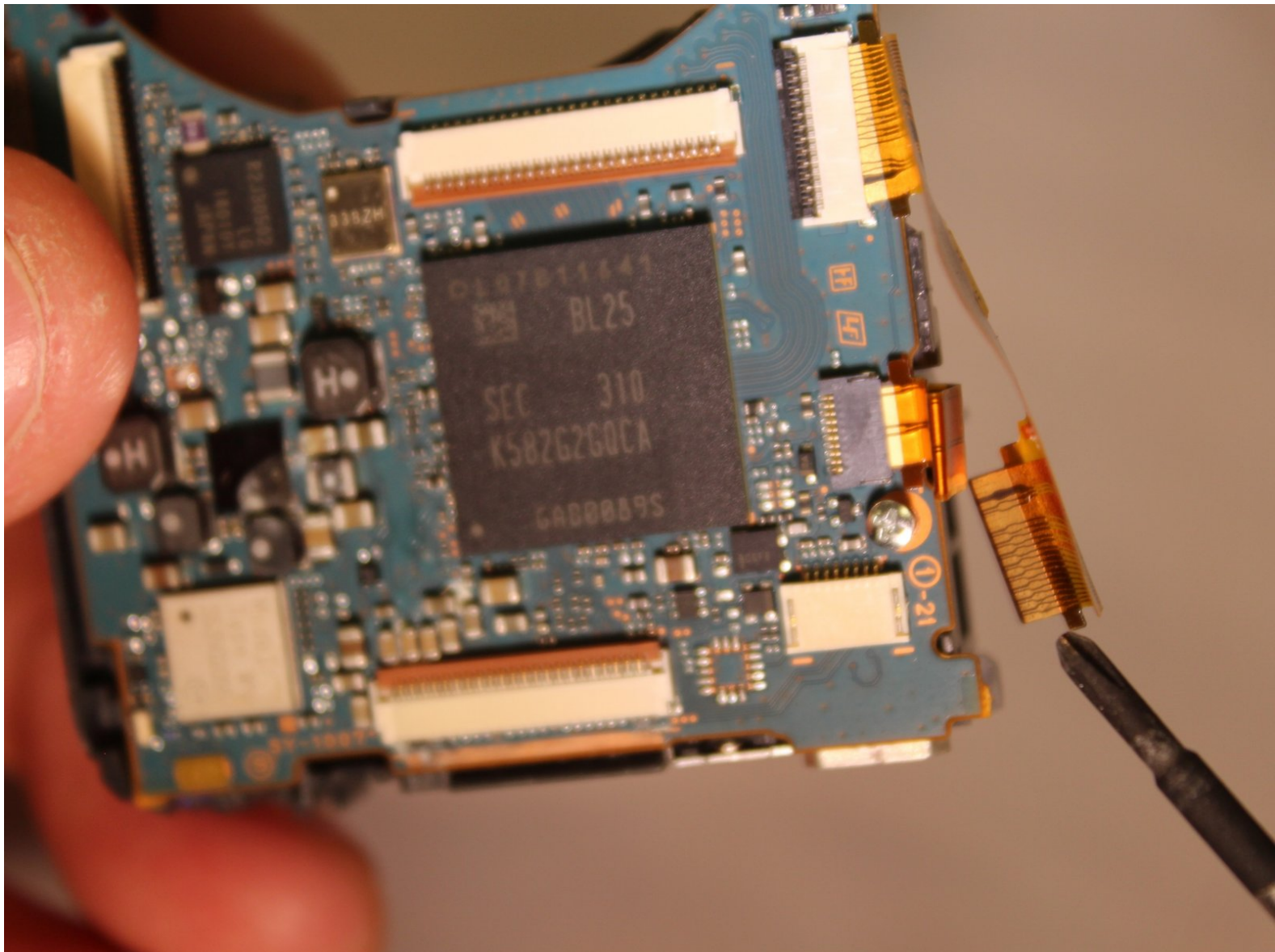




Sony Cyber-shot DSC-WX80 Motherboard Replacement

Describes steps to remove and replace motherboard. Lists prerequisite steps and required tools.

Written By: John Chastek



INTRODUCTION

Make sure you have the necessary tools in order to complete the motherboard replacement for the Sony Cyber Shot WX80 and be sure to have a steady hand when dealing with the smaller and more fragile parts.



TOOLS:

- [Phillips #00 Screwdriver](#) (1)
- [Spudger](#) (1)
- [iFixit Opening Tools](#) (1)
- [Magnetic Project Mat](#) (1)
- [Tweezers](#) (1)



PARTS:

- [Replacement Sony Cyber Shot WX80 Motherboard](#) (1)

Step 1 — Total Disassembly Part by Part



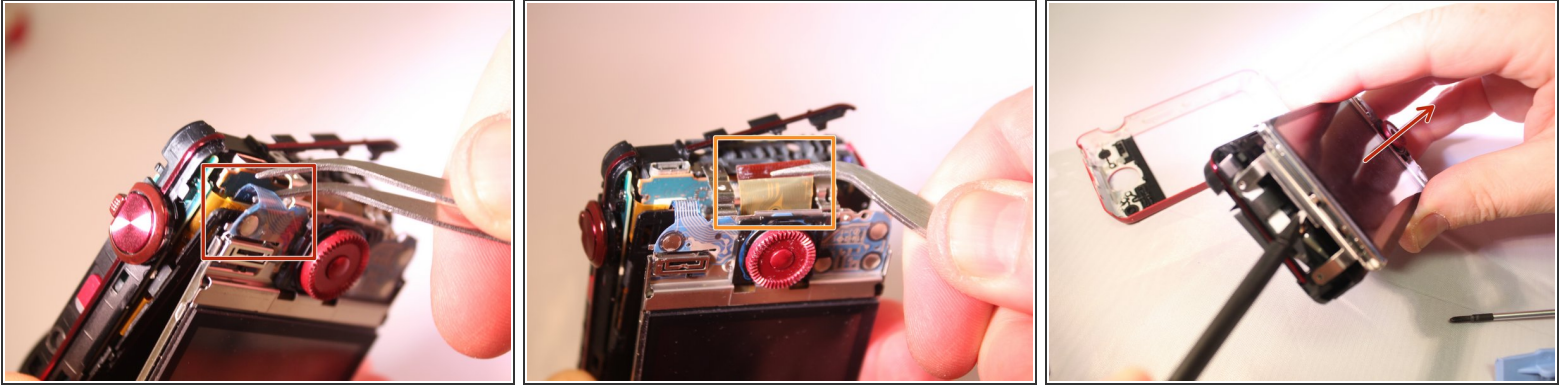
- Begin by removing all six #00 screws holding the outer chassis together.
- ⓘ Remember to keep track of all screws as they are small and very easy to lose

Step 2



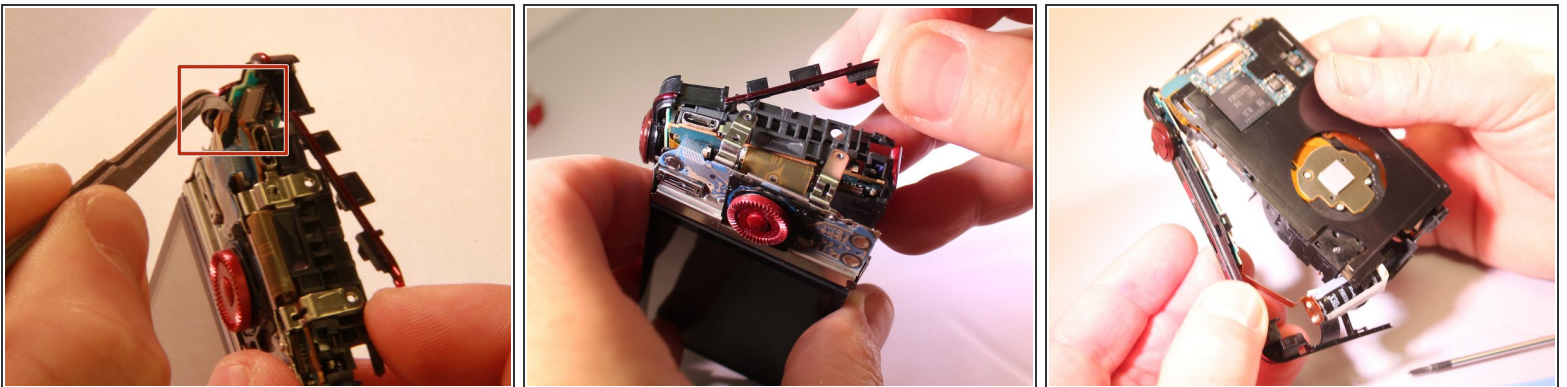
- ⓘ At this point most of the parts in the camera should be free moving.
- ⓘ Take note of the small free moving flap near the battery port seen in the first of the three photos.
- Now pry apart the top and bottom shell of the case.

Step 3



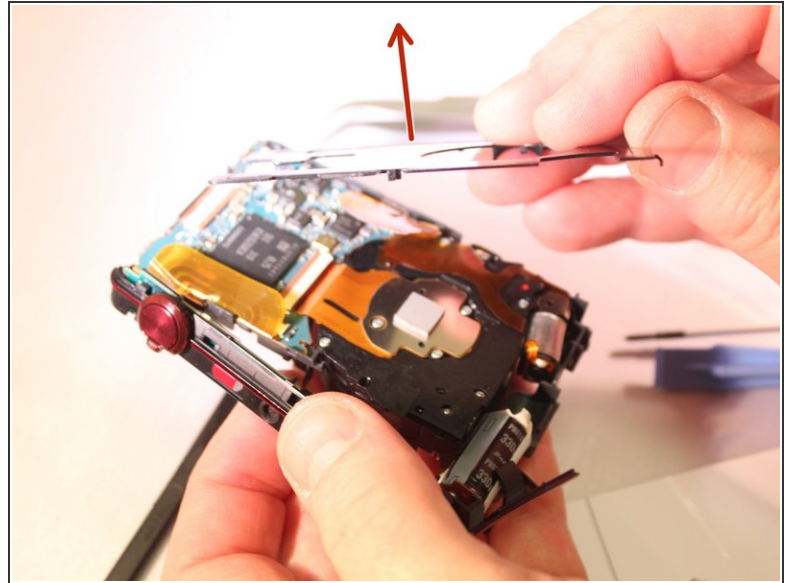
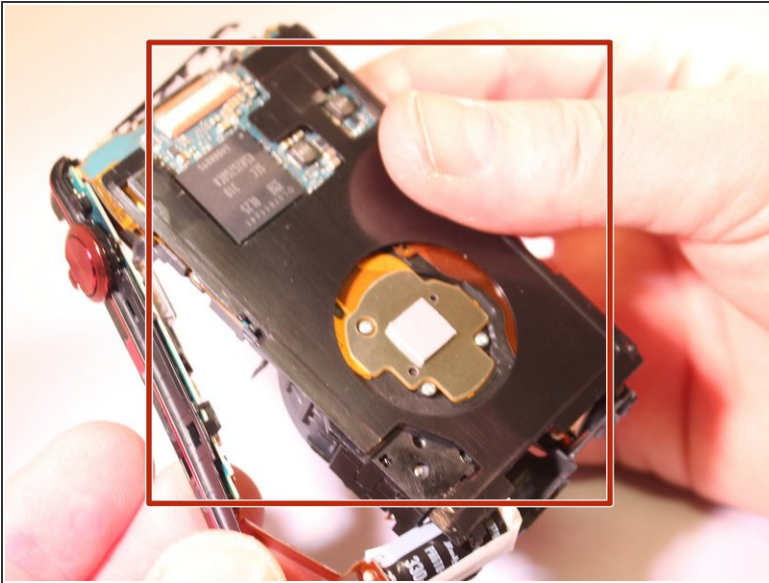
- Remove the two ribbon cables holding the LCD screen in place. Pull them directly out of the port they are plugged into.
- ⚠ Take care not to tear these ribbons as they are the communication network that your screen uses to operate.
- Now that your LCD screen is detached you can pull it apart from the rest of the camera.

Step 4



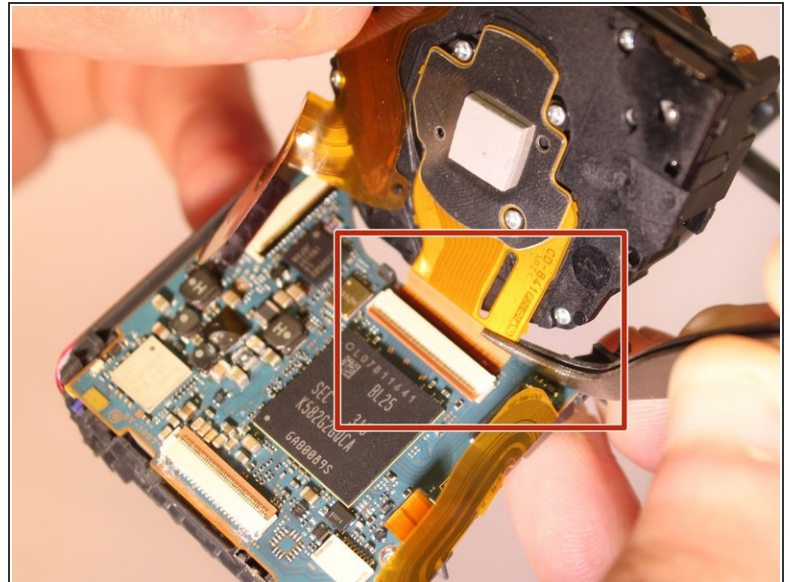
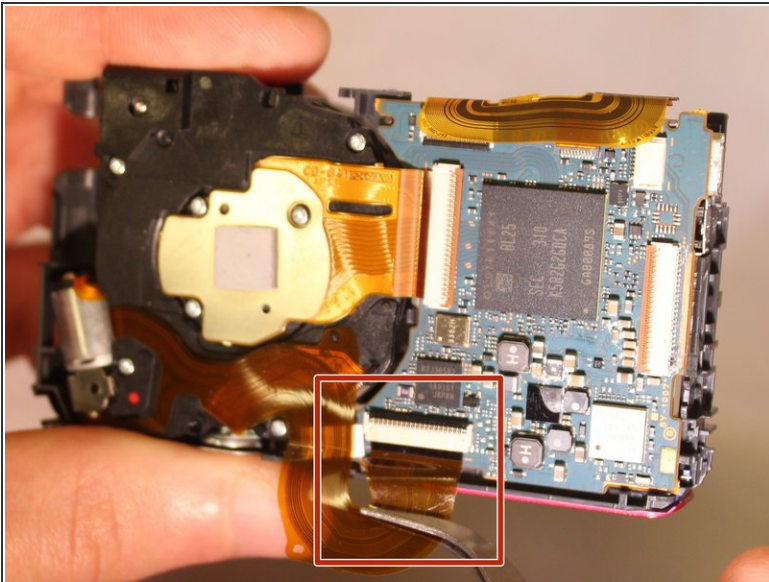
- The inner lining frame has an orange ribbon cable (circled in the image) that needs to be detached before it can be safely removed.
- ⚠ Carefully remove the inner frame lining as it can be fragile.

Step 5



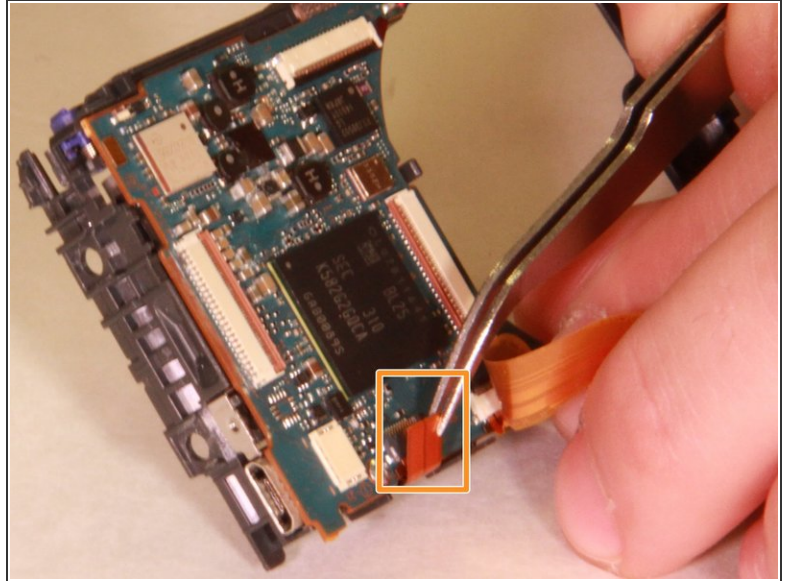
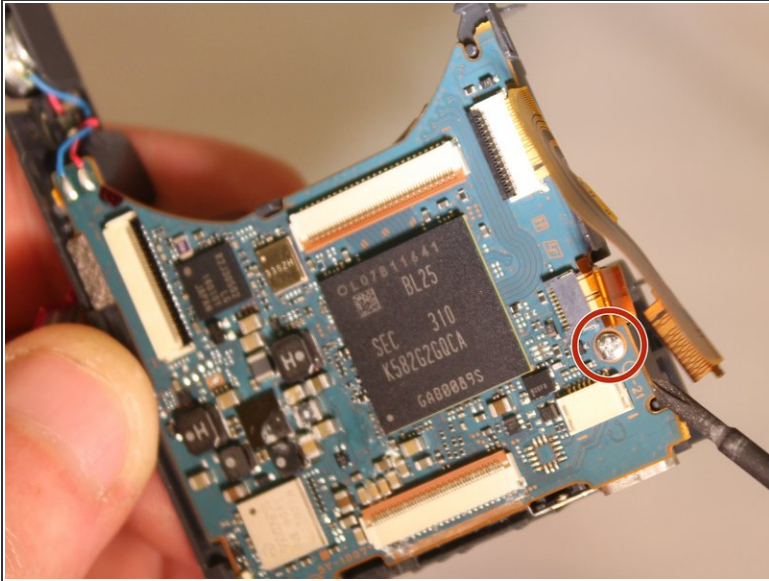
- After the LCD screen has been removed there is a black metal plate that can be pulled off revealing the motherboard and the lens.

Step 6



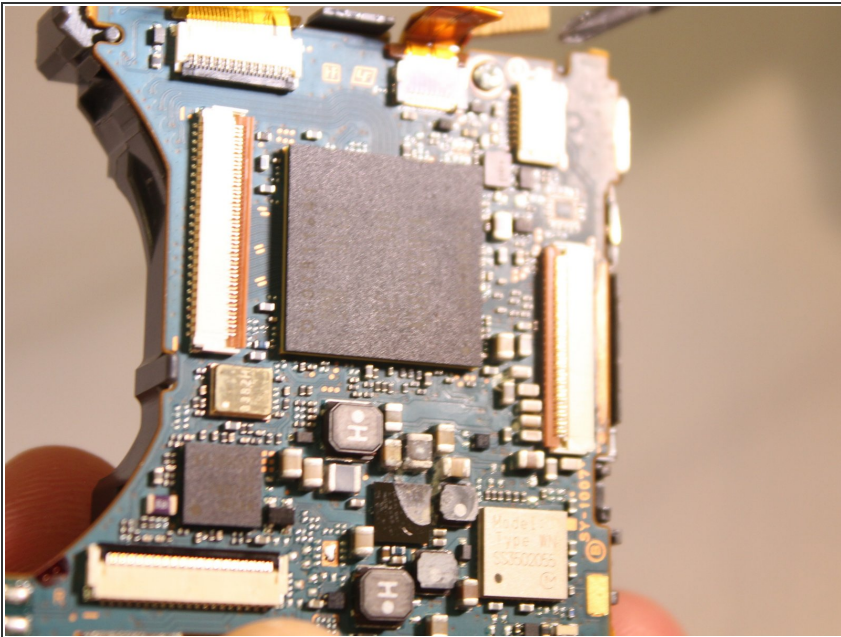
- To separate the motherboard from the lens there are two ribbon cables that need to be pulled out of their ports.

Step 7



- Finally to separate the motherboard from the base skeleton frame, one last silver screw and one ribbon cable need to be removed.

Step 8 — Motherboard



- Now that your motherboard has been removed you can replace it!

To reassemble your device, follow these instructions in reverse order.

This document was generated on 2019-09-22 04:10:21 AM (MST).

