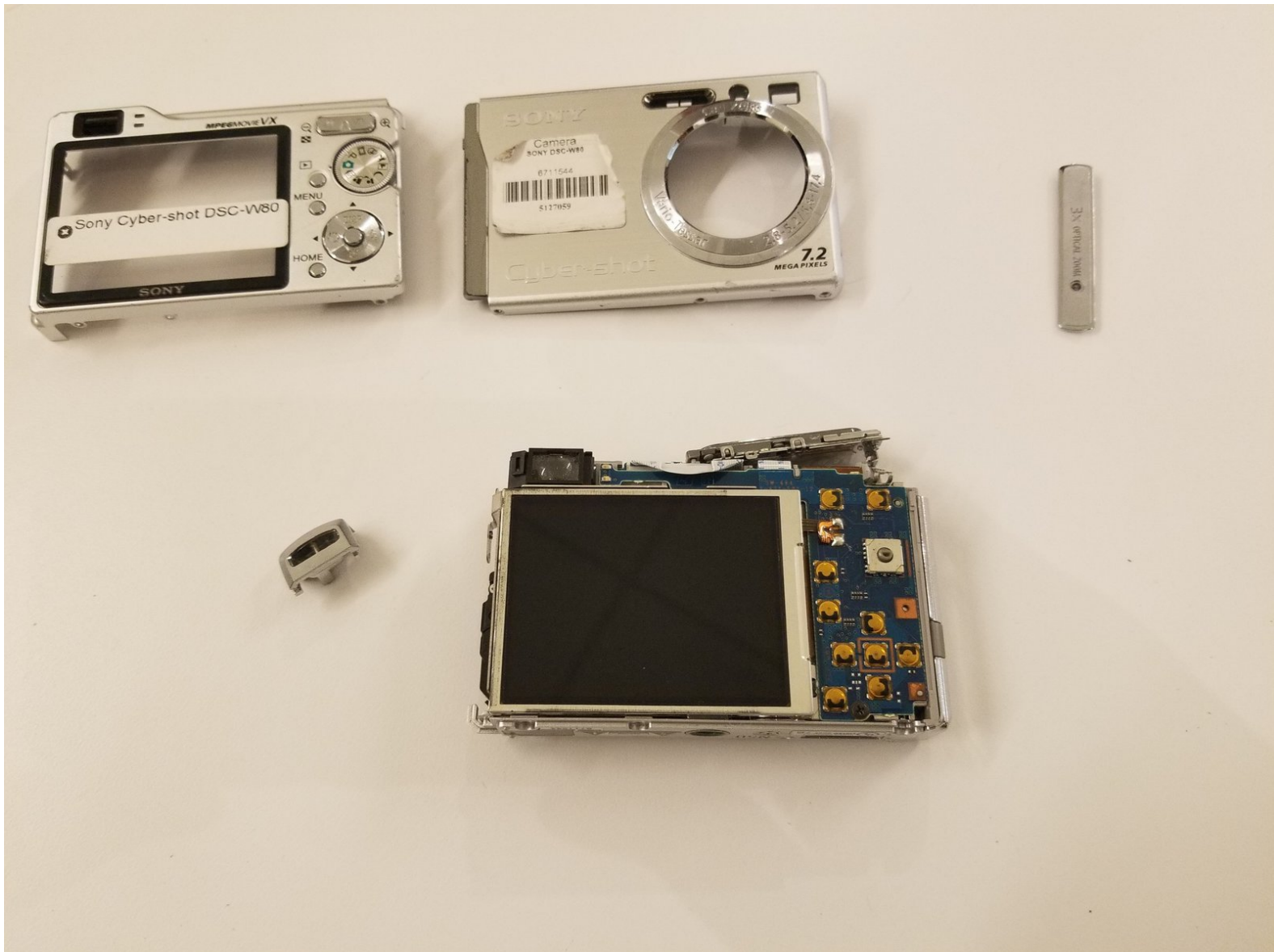




Sony Cyber-shot DSC-W80 Front/Back Panels Replacement

This guide will show you how to disassemble the front and back panels for this device.

Written By: Alfred Bee



INTRODUCTION

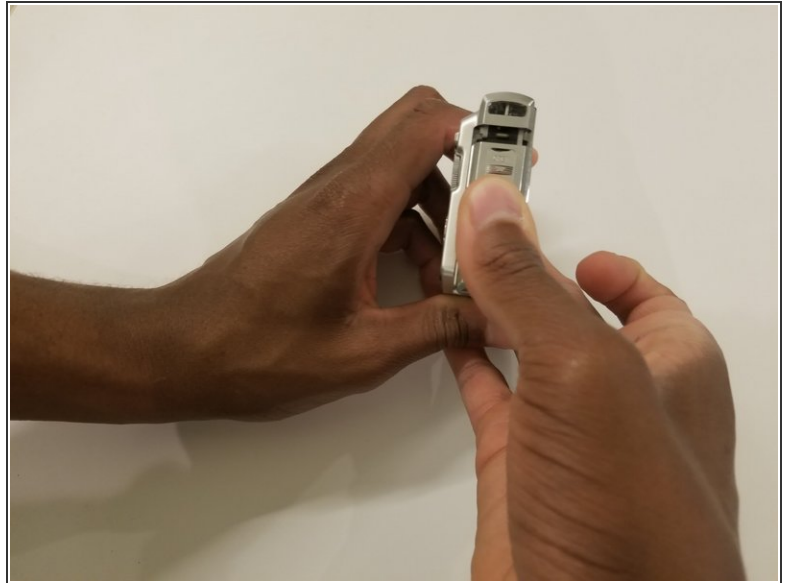
This guide will show you how to replace the casing on a Sony Cyber-Shot DSC-W80 camera.



TOOLS:

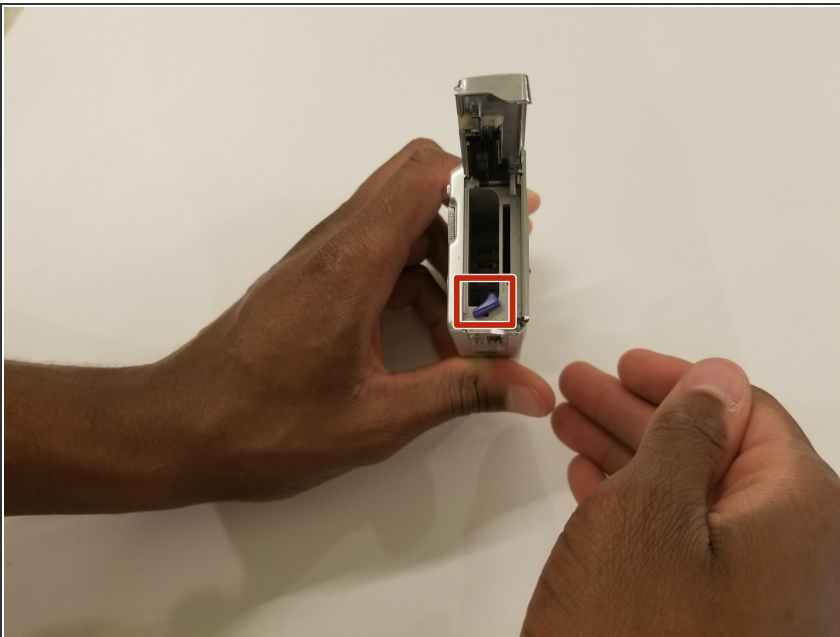
- [Phillips #000 Screwdriver](#) (1)
 - [Spudger](#) (1)
-

Step 1 — Battery



- Open the battery cover by sliding it towards you.

Step 2



- Push the purple latch with your thumb to unlock the battery.
- Pull the battery out.

Step 3 — Front/Back Panels



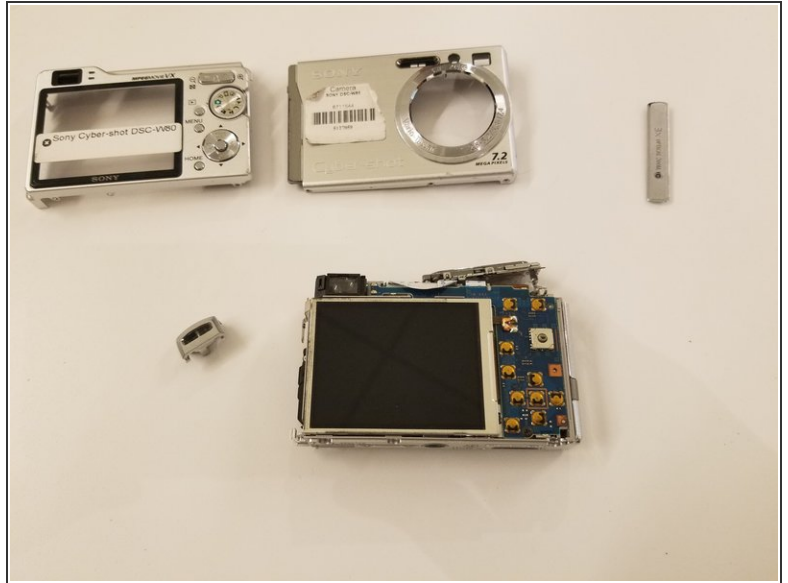
- Remove the eight Phillips #000 screws.

Step 4



- Remove the single Phillips #000 screw found next to the battery latch.

Step 5



- Remove the middle panel on the side of the device.
- Slowly pry the camera apart at its seam.

To reassemble your device, follow these instructions in reverse order.