



Sony Cybershot DSC-W830 Motherboard Replacement

This guide will show you how to replace the motherboard on Sony Cybershot DSC-W830 camera.

Written By: Saiman Sigdel



INTRODUCTION

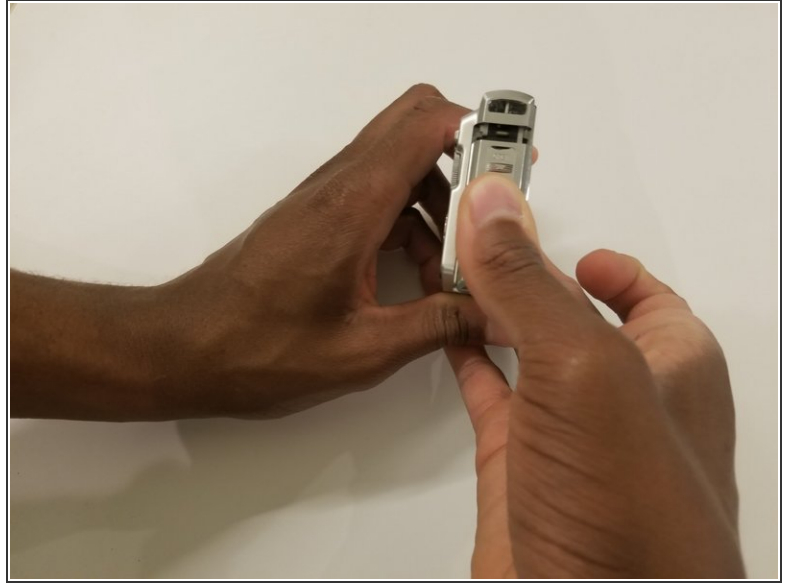
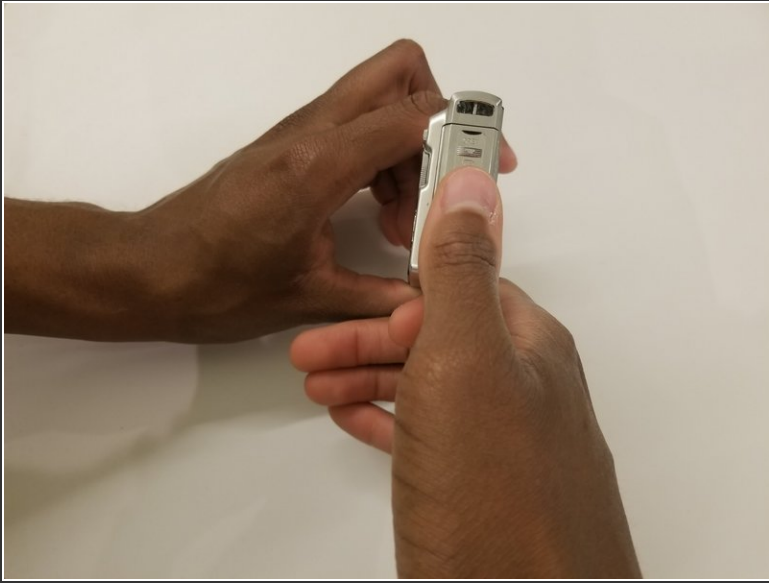
This guide will show you how to replace the motherboard on the Sony Cybershot DSC-W830 camera.



TOOLS:

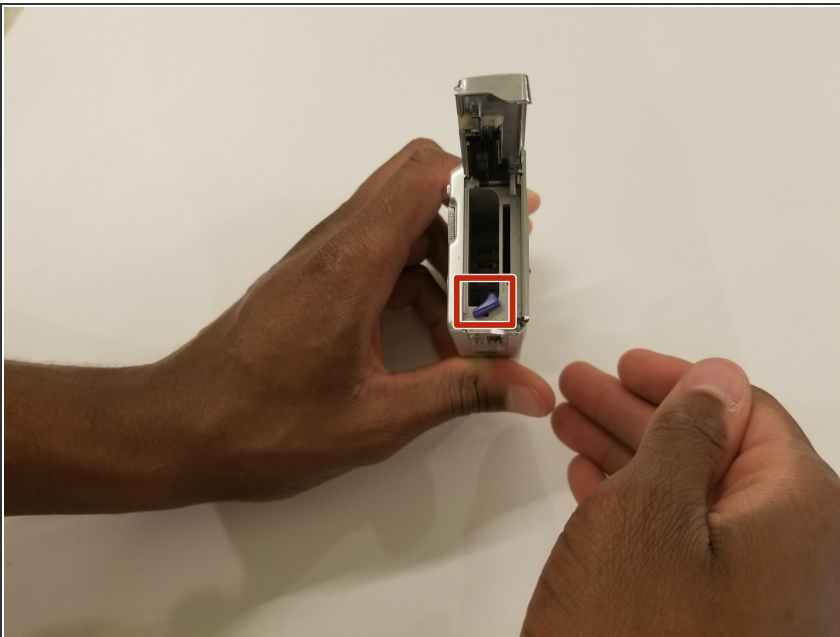
- [Phillips #000 Screwdriver](#) (1)
 - [Spudger](#) (1)
-

Step 1 — Battery



- Open the battery cover by sliding it towards you.

Step 2



- Push the purple latch with your thumb to unlock the battery.
- Pull the battery out.

Step 3 — Front/Back Panels



- Remove the eight Phillips #000 screws.

Step 4



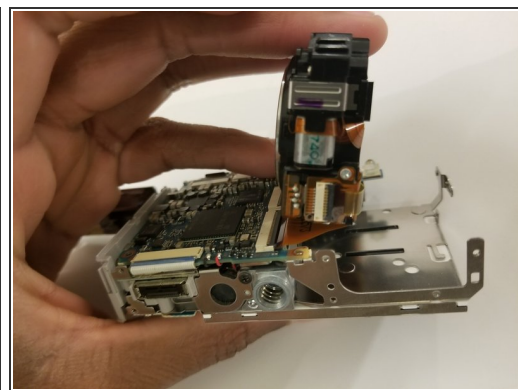
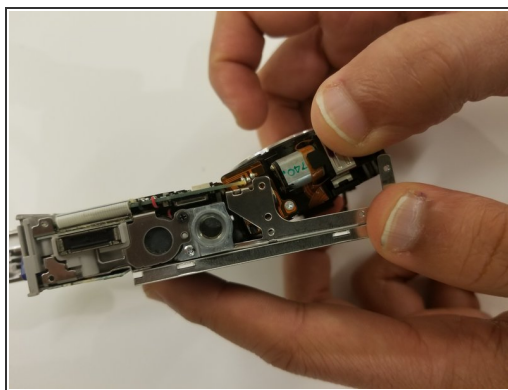
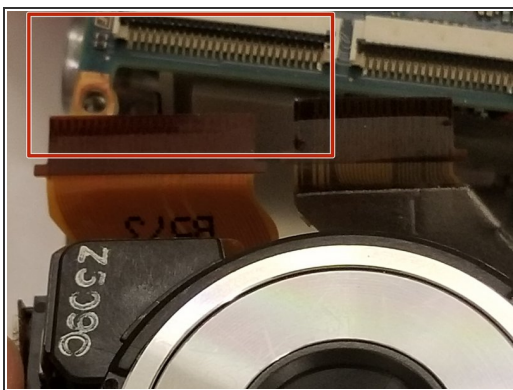
- Remove the single Phillips #000 screw found next to the battery latch.

Step 5



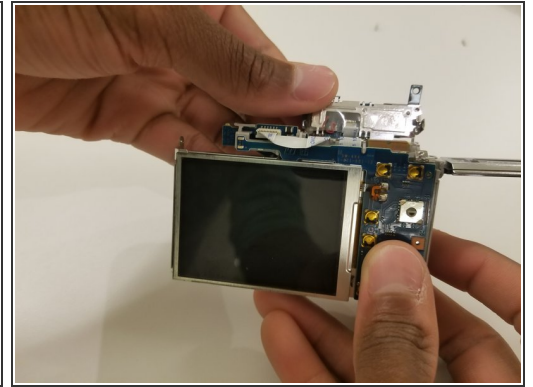
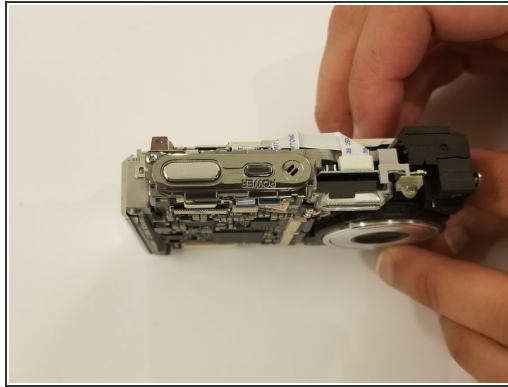
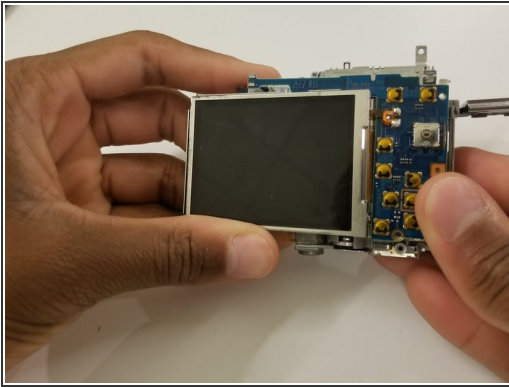
- Remove the middle panel on the side of the device.
- Slowly pry the camera apart at its seam.

Step 6 — Lens



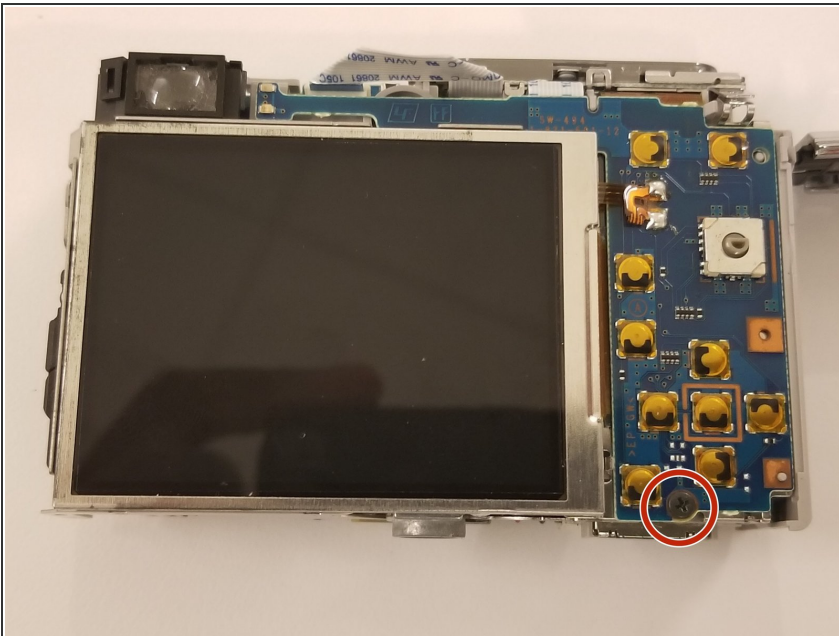
- Disconnect all ribbon cables by using the flat end of a spudger to lift up the black tabs on the ZIF connectors.
- Once disconnected, use your fingers to lift lens out of the frame.

Step 7 — LCD Screen



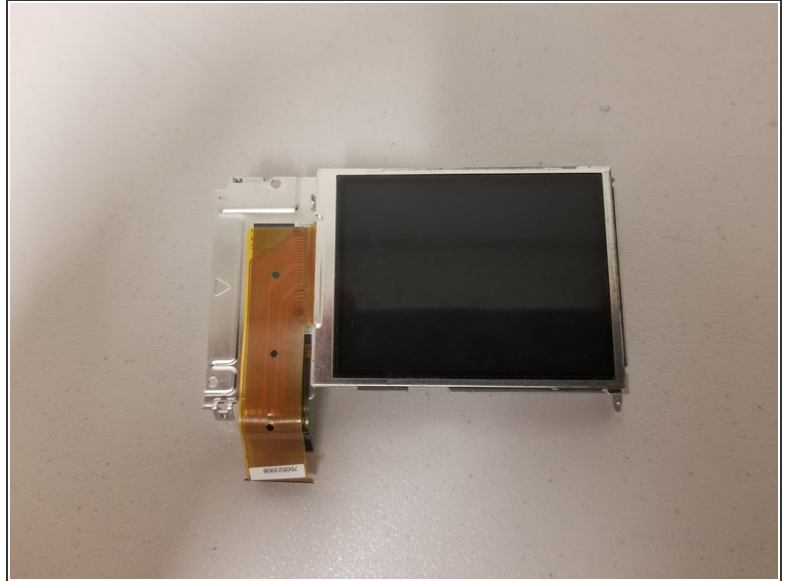
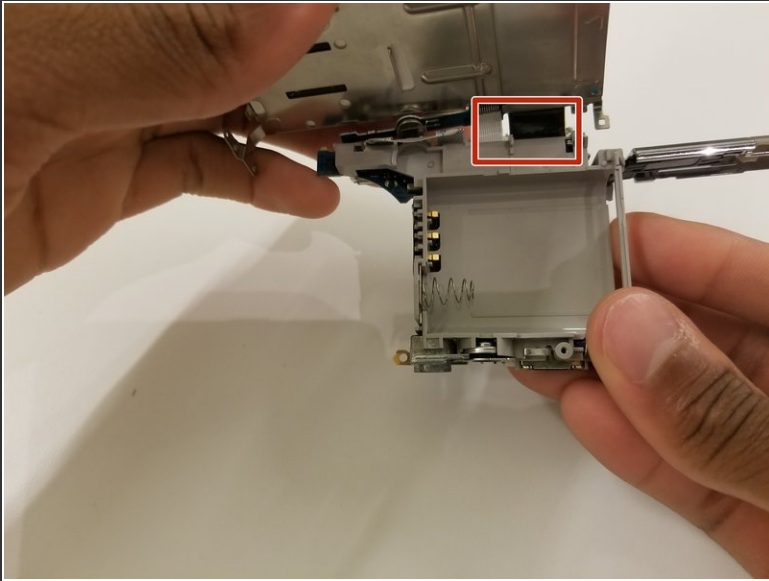
- Lift the power button board up off of the daughterboard.

Step 8



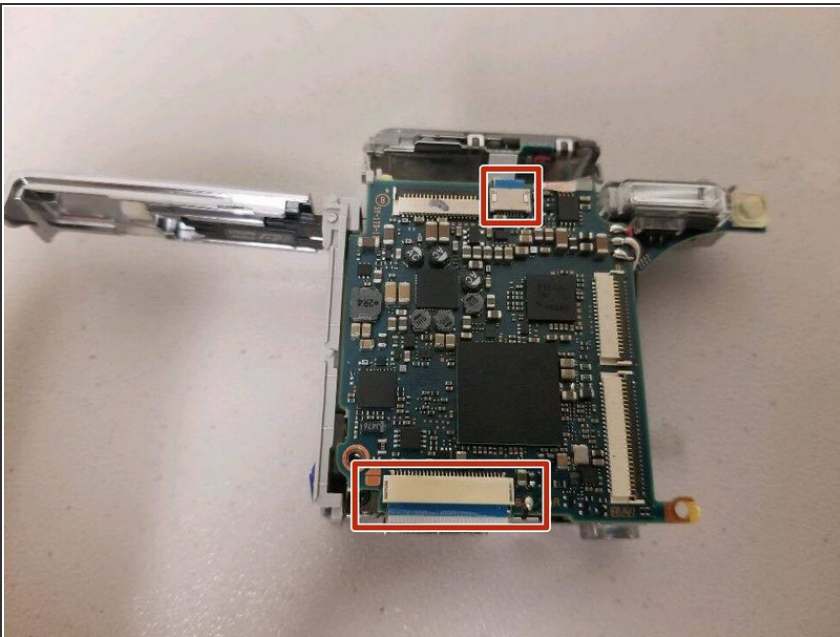
- Remove the single Phillips #000 screw.
- Use your hands to remove the blue daughterboard.

Step 9



- Flip the camera around.
- Remove the black and orange ribbon cables.

Step 10 — Motherboard



- Remove the two remaining ribbon cables.
- Pull the motherboard from the camera.

To reassemble your device, follow these instructions in reverse order.