



Sony DCR-DVD 108 Case Disassembly

Prerequisite Only

Written By: Elijah DeWolf



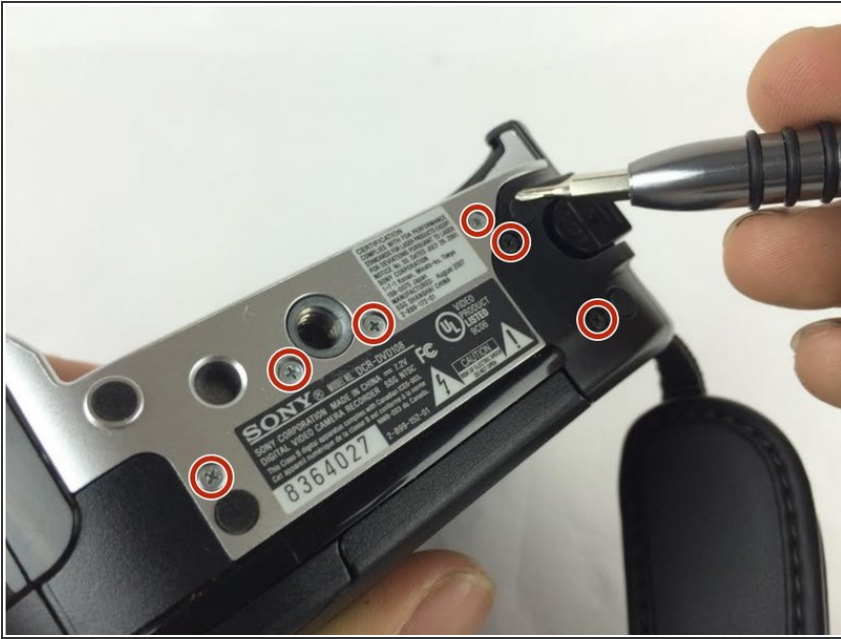
INTRODUCTION

The following is a guide to disassemble the camera into two primary halves. It will serve as prerequisite guide to few a other guides hosted by this page.

TOOLS:

- [Spudger](#) (1)
 - [JIS Driver Set](#) (1)
-

Step 1 — Sony DCR-DVD 108 Case Disassembly



- Remove all the 4.3mm screws on the bottom using a J000 Phillips screwdriver. There should be seven screws (4 silver, 2 black).

Step 2



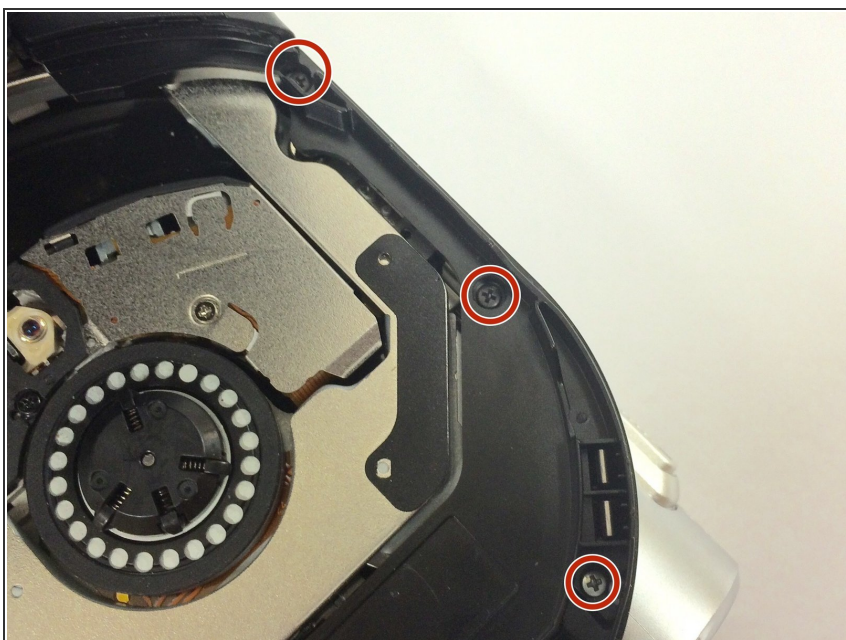
- Remove the 5mm #0 Phillips screws on the underside of the LCD tuck-a-way.

Step 3



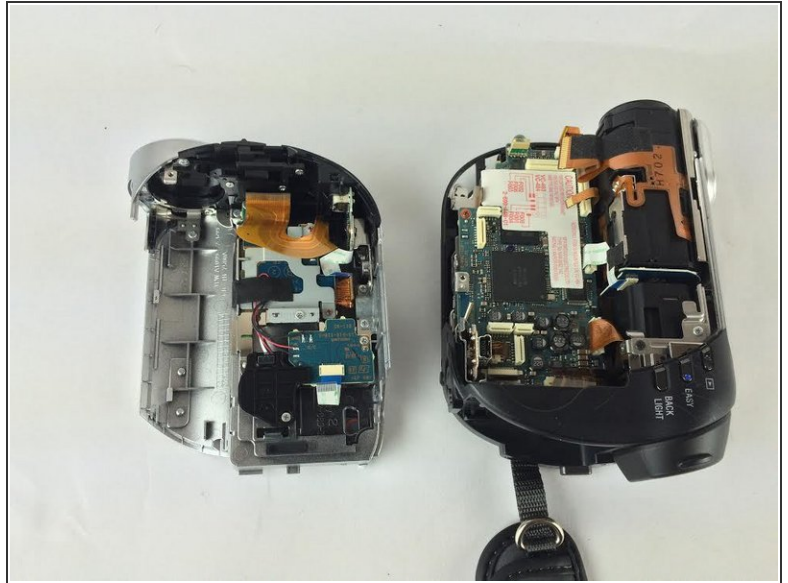
- Remove the 2mm #0 Phillips screw behind the battery.

Step 4



- Open the dvd cover and remove the 3 4.3mm phillips screws. Including ones in the corners that may be hidden.

Step 5



- Once all the screws are removed you can safely pry open the camera case using a spudger.

To reassemble your device, follow these instructions in reverse order.