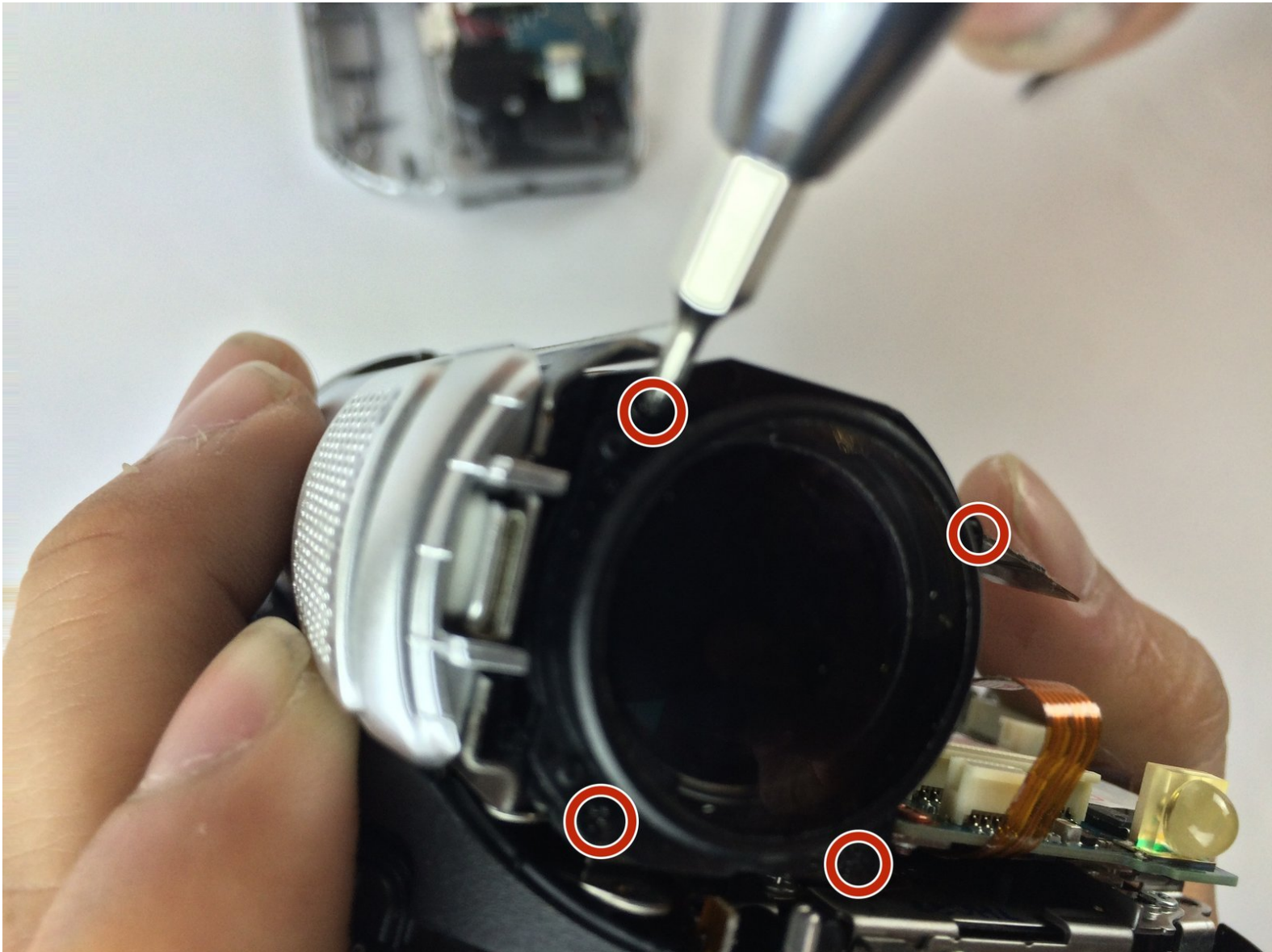




# Sony DCR-DVD 108 Front and Back Lens Replacement

No nonsense way to get the lens out of your camera

Written By: Elijah DeWolf



---

## INTRODUCTION

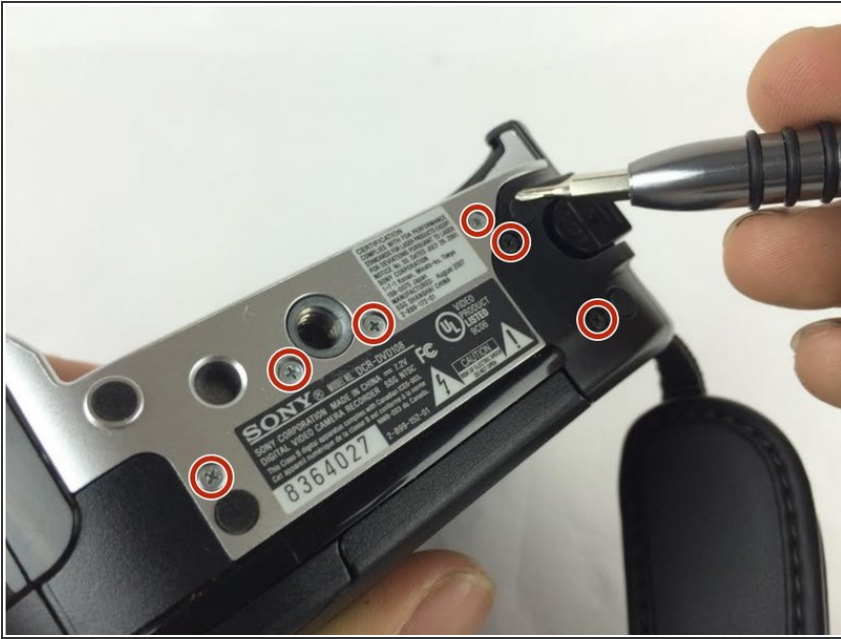
The lens allow for clear and consistent previews for what you are filming. Thus image quality can be compromised if either lens is compromised; maintenance of this component easy yet critical.

---

### **TOOLS:**

- [Spudger](#) (1)
  - [JIS Driver Set](#) (1)
  - [Phillips #0 Screwdriver](#) (1)
-

## Step 1 — Sony DCR-DVD 108 Case Disassembly



- Remove all the 4.3mm screws on the bottom using a J000 Phillips screwdriver. There should be seven screws (4 silver, 2 black).

## Step 2



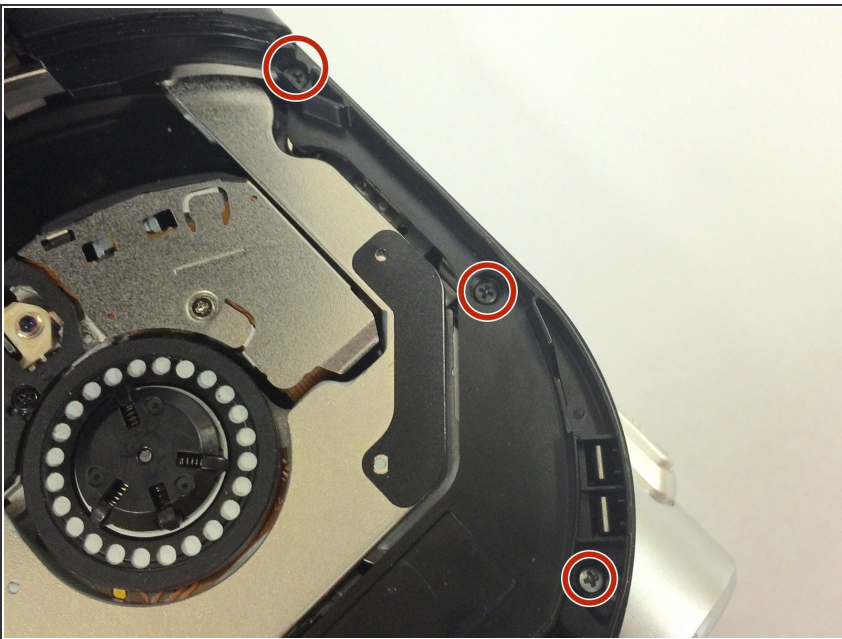
- Remove the 5mm #0 Phillips screws on the underside of the LCD tuck-a-way.

### Step 3



- Remove the 2mm #0 Phillips screw behind the battery.

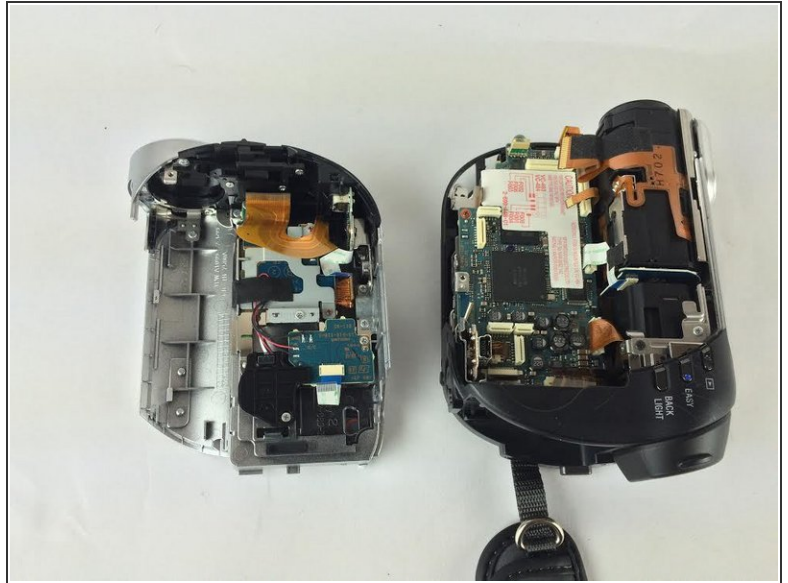
### Step 4



- Open the dvd cover and remove the 3 4.3mm phillips screws. Including ones in the corners that may be hidden.

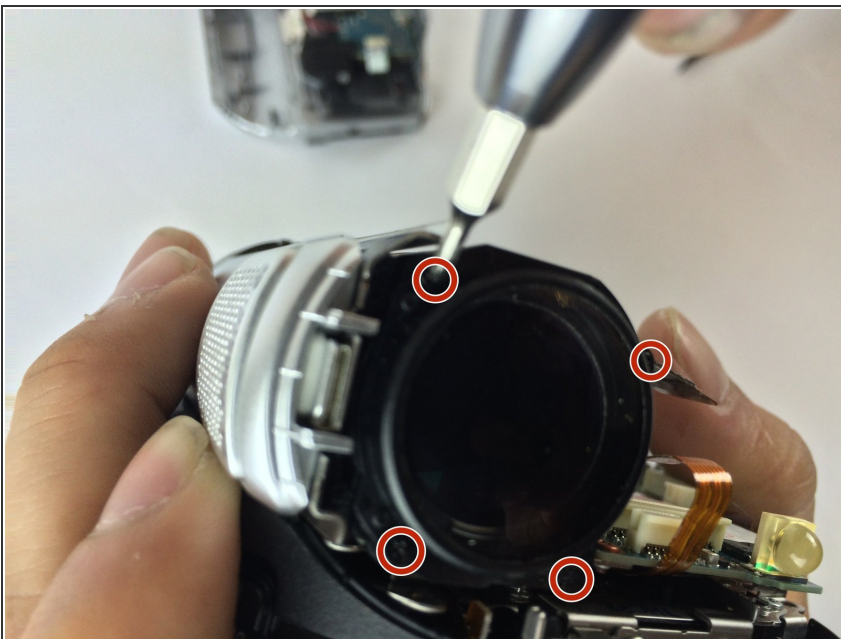


## Step 5



- Once all the screws are removed you can safely pry open the camera case using a spudger.

## Step 6 — Front and Back Lens



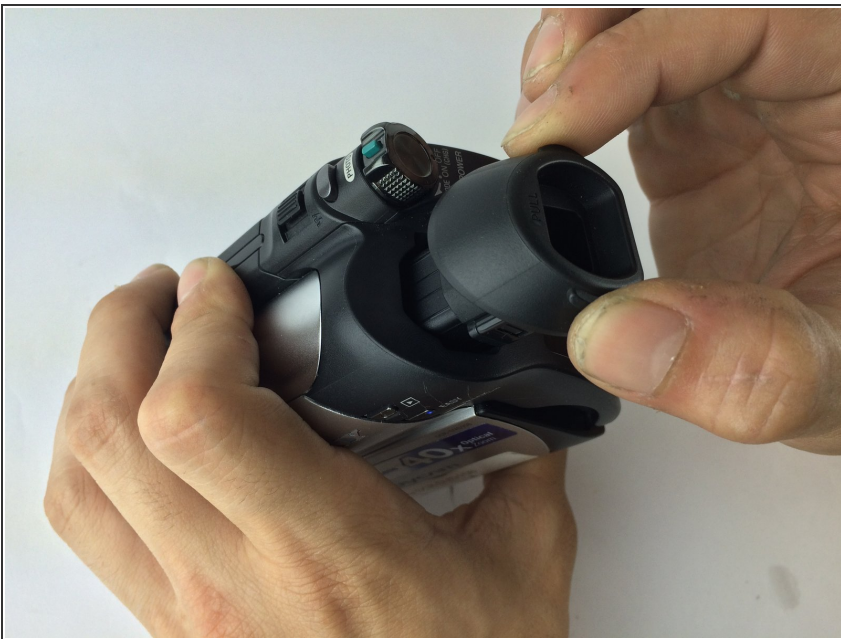
- Take the half of camera containing both lens components and turn front portion towards you.
- Remove the four 4.3mm Phillips #0 screws pictured.

## Step 7



- Remove front lens and inspect for "dirt," smudges, or scratches. Use discretion, if lens appears too damaged, replace part.

## Step 8



- Gently pull lens housing to expose housing channel.



## Step 9



- With the pointed end of a plastic spudger, press latch located on the side of rear lens housing.

## Step 10



- Once loosened gently pull and remove lens housing. The lens should now be free to inspect and replace.

In order to reassemble your device, follow these instructions in reverse order.

This document was generated on 2019-10-02 03:25:43 PM (MST).

