



Sony DVP-SR200P Button Circuit Board Replacement

Removing a defective button circuit board from the DVD player so a new button circuit board may be installed.

Written By: Jeffrey Powell



This document was generated on 2019-09-19 12:23:11 AM (MST).

INTRODUCTION

This guide will teach you how to remove the button circuit board.



TOOLS:

- [Phillips #1 Screwdriver](#) (1)
-

Step 1 — Top Cover



- Remove the five #1 Phillips screws (black, 3/16") attaching the cover to the DVD player.
 - One 3/16" screw on the right side of the DVD player.
 - One 3/16" screw on the left side of the DVD player (directly opposite of other screw).
 - Three 3/16" screws on the back of the DVD player.

Step 2



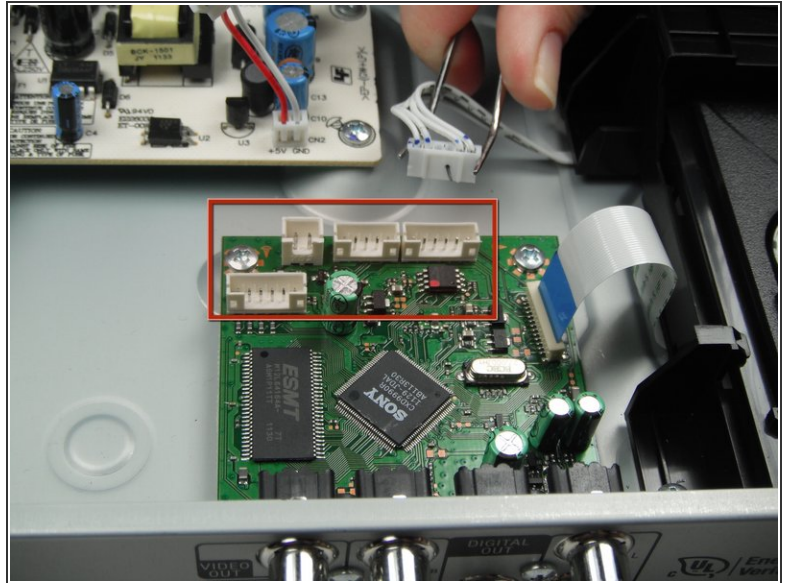
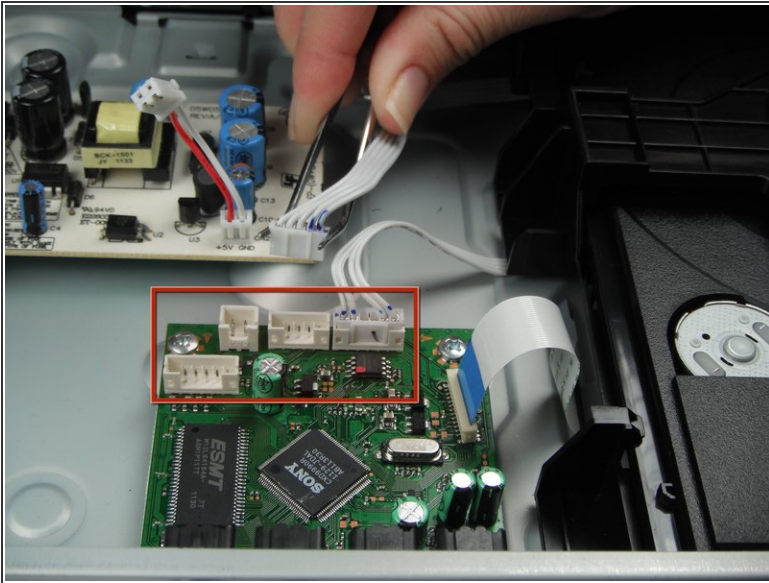
- Slide the cover away from the front of the DVD player until it is off.

Step 3 — Processing Board



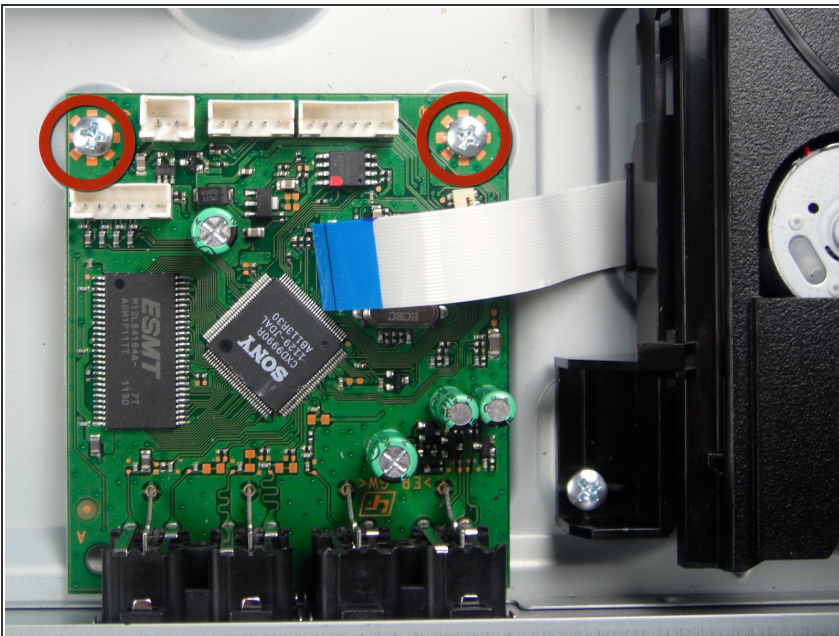
- Remove the blue tape from the processing board by gently pulling upward.

Step 4



- Use the tweezers to remove the four sets of wires connected to the processing board. Start with the cord located in front of the row of three cords.
- ⓘ The wires may be difficult to remove. Wiggling them while lifting them up may help remove them.

Step 5



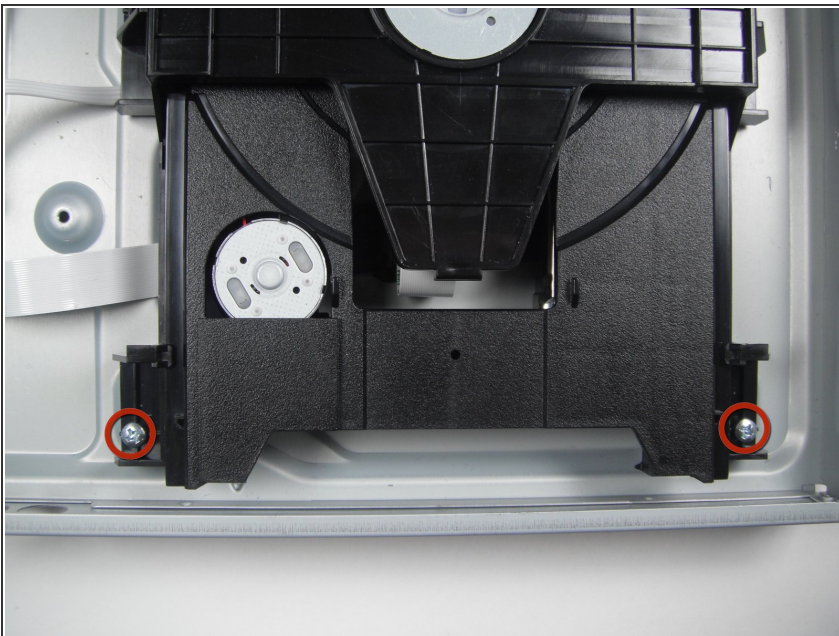
- ⚠ Handle the processing board with care. It is fragile.
- Unscrew the two #1 Phillips screws (silver, 3/16") located on the two edge corners of the processing board.

Step 6



- Orient the DVD player so that you are facing the video and audio jacks.
 - Unscrew the two #1 Phillips screws (silver, 3/16") located on the outside of the DVD player
- i** The processing board is now free to be removed and replaced.

Step 7 — DVD Drive



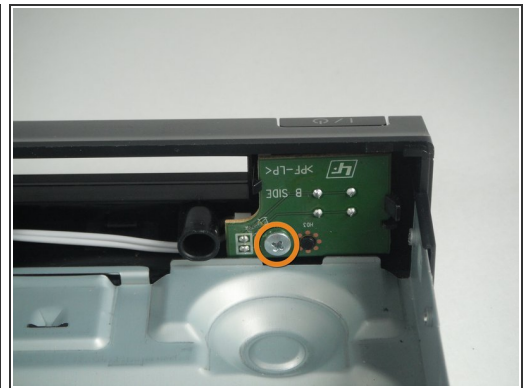
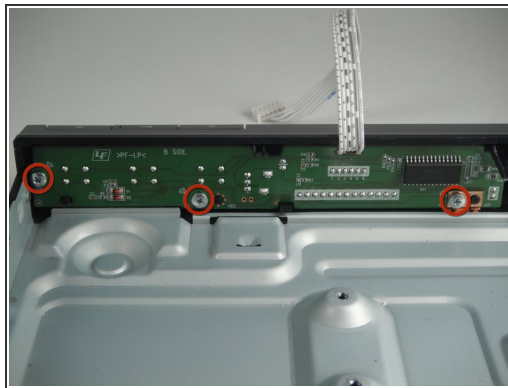
- Orient the DVD player so the front of the DVD player is opposite of you.
- Remove the two #1 Phillips screws (silver, 3/16") that attach the DVD drive to the bottom of the DVD player.

Step 8



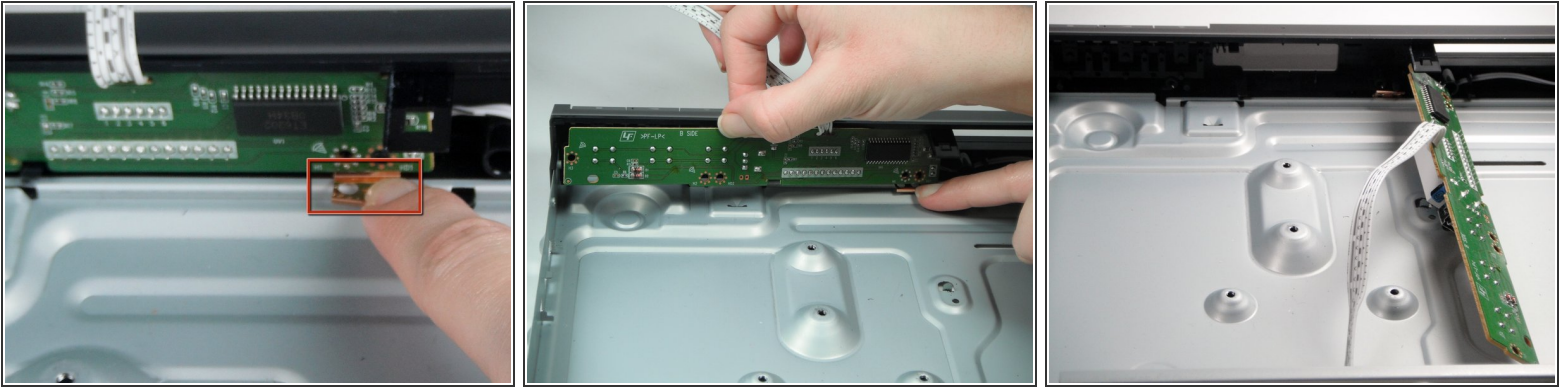
- Remove the DVD drive by pulling it backward and upward while ensuring that it is free of any braces.

Step 9 — Button Circuit Board



- Orient the DVD player so the button circuit board is facing you.
- Remove the four #1 Phillips screws (silver, 3/16") from the button circuit board.
 - Three 3/16" screws from the longer button circuit board.
 - One 3/16" screw from the smaller button circuit board.

Step 10



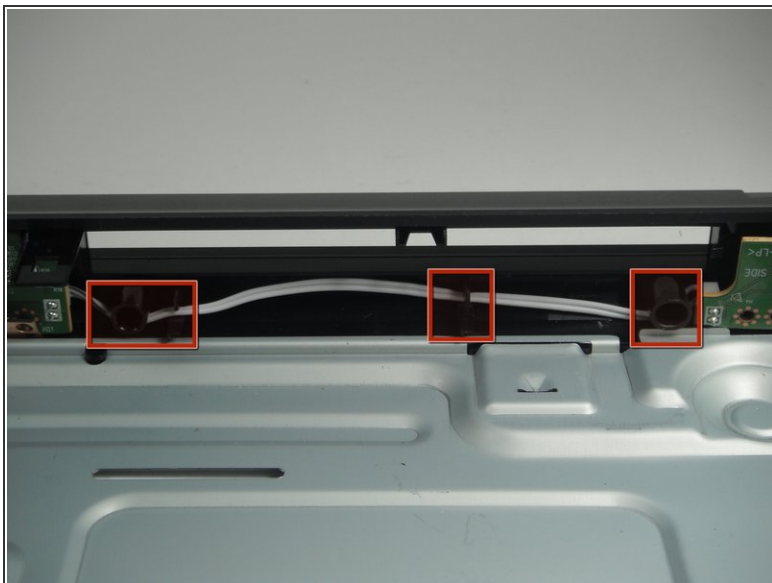
- Hold down the copper brace that is near the far right screw hole of the long circuit board.
- Lift the longer button circuit board over the copper brace and out of its position.

Step 11



- Push back the black, plastic clip near the left center of the shorter button circuit board.
- Pull the shorter button circuit board out of its position.

Step 12



- Wiggle the white cord connecting the two boards out from under the plastic pieces securing the cord.
- Lift the button circuit board out of the DVD player.

To reassemble your device, follow these instructions in reverse order.