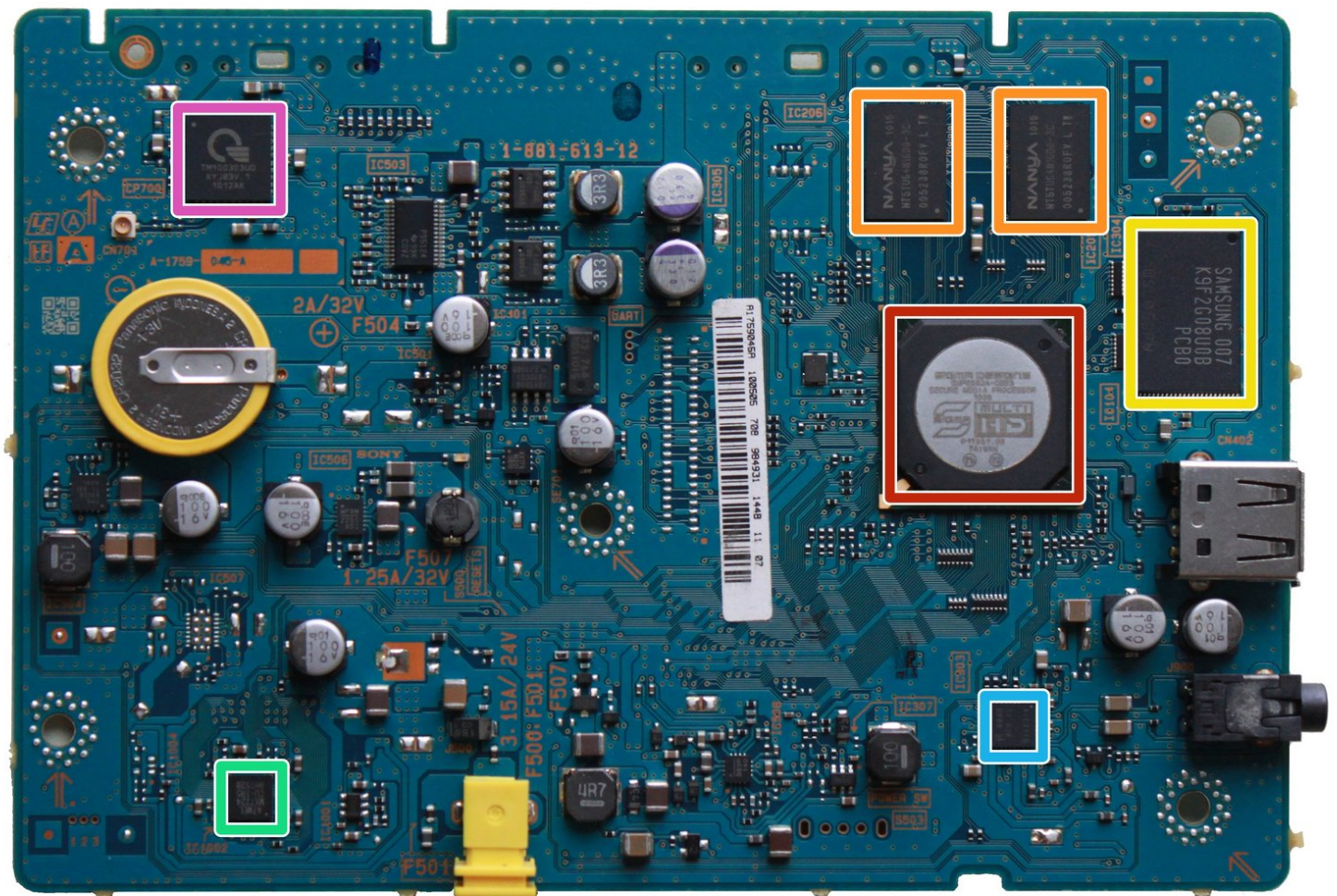




Sony Dash Teardown

A teardown of the 2010 Sony Dash Personal Internet Viewer, model HID-C10.

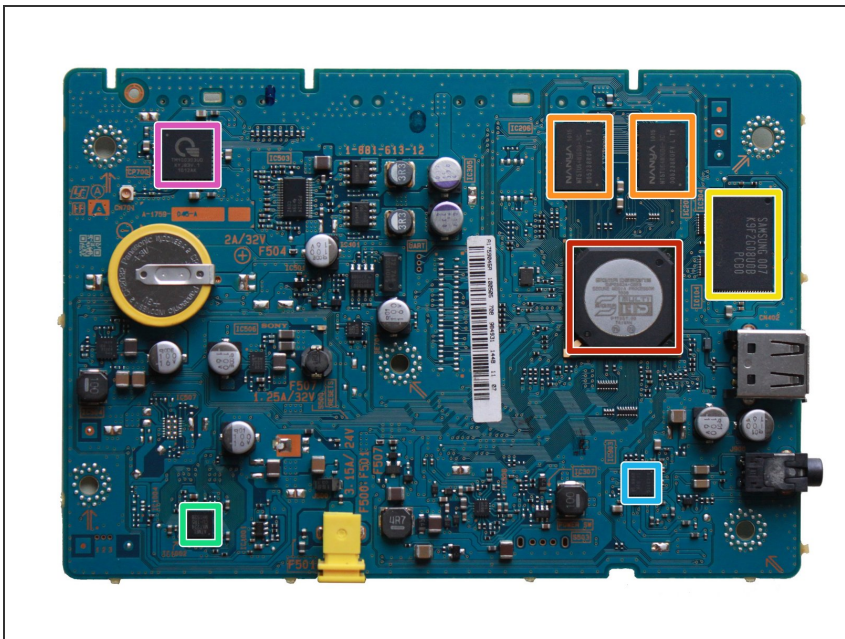
Written By: afischer15



INTRODUCTION

Since Sony will no longer be supporting their "Personal Internet Viewers" [as of July 2017](#), it's time to take a look inside.

Step 1 — Sony Dash Teardown



- The front side of the PCB has lots of stuff.
- Sigma Designs SMP8652A-CBE3 "Secure Media Processor"
- 2x Nanya [NT5TU64M16DG-3C](#) 1Gb DDR2 SDRAM
- Samsung [K9F2G08U0B](#) non-volatile flash memory
- Amtel [MXT224](#) Touchscreen Sensor
- Texas Instruments [AIC3110](#) audio codec/class D amp
- Quanta Electric TM100 ? 802.11b/g radio

To reassemble your device, follow these instructions in reverse order.