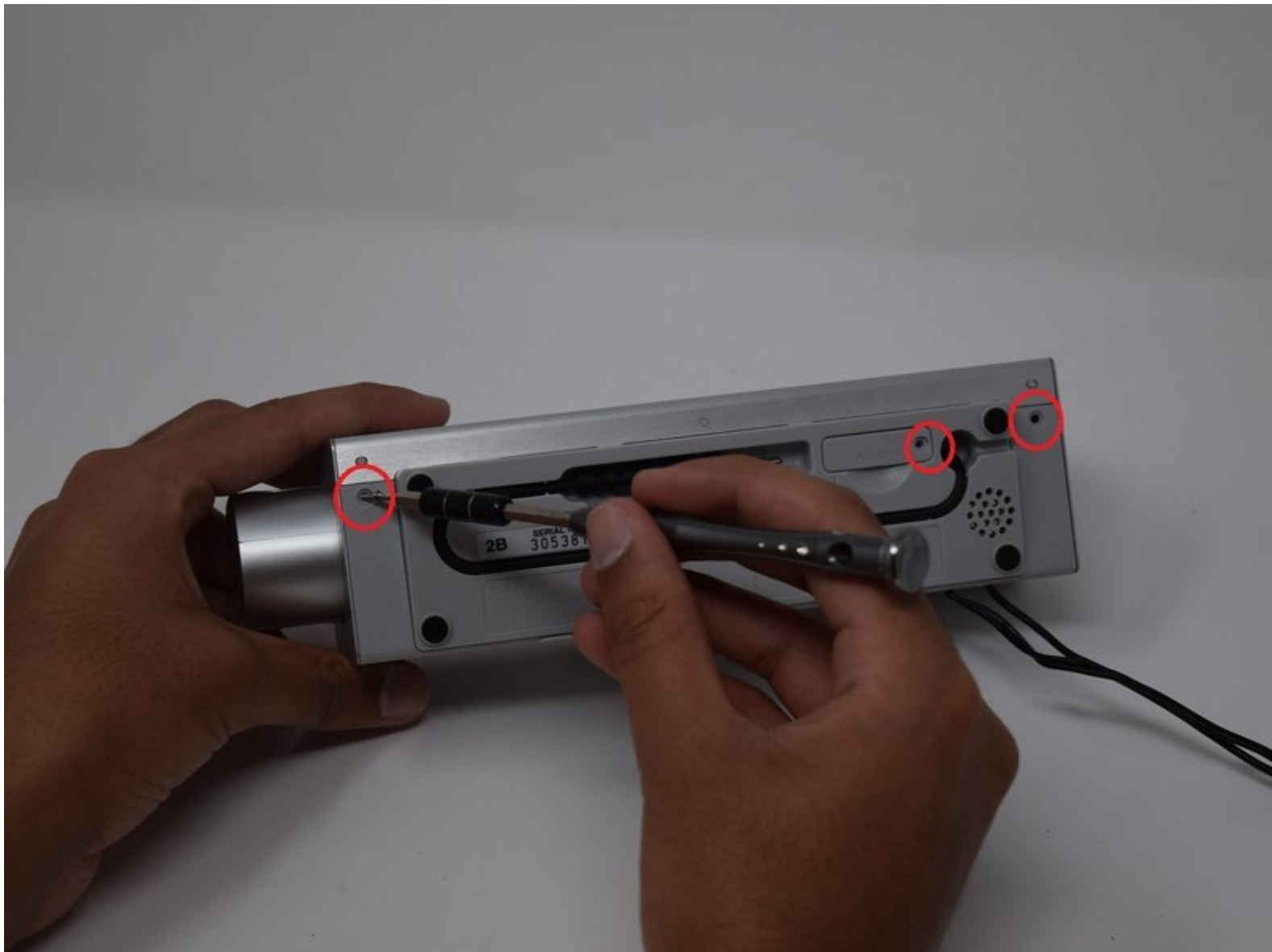




Sony Dream Machine ICF-C717PJ Antenna Replacement

If you are facing issues involving the radio on your device, it is most likely that the antenna will need to be reset internally.

Written By: Gurleen Powar



INTRODUCTION

This guide will be useful in replacing or repairing your antenna if its not functioning properly.

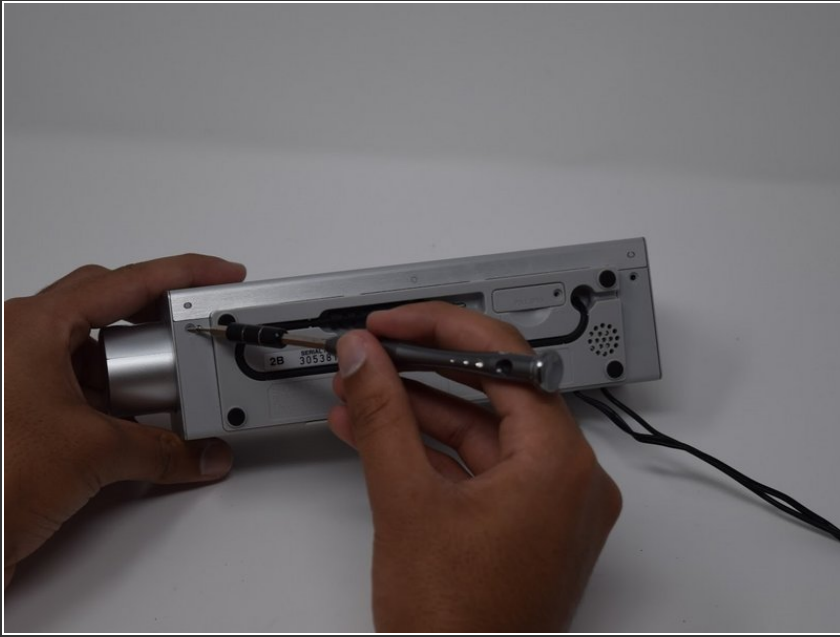
Please refer to the Sony Dream Machine troubleshooting page for extra assistance if needed.



TOOLS:

- [Phillips #0 Screwdriver](#) (1)
-

Step 1 — Antenna



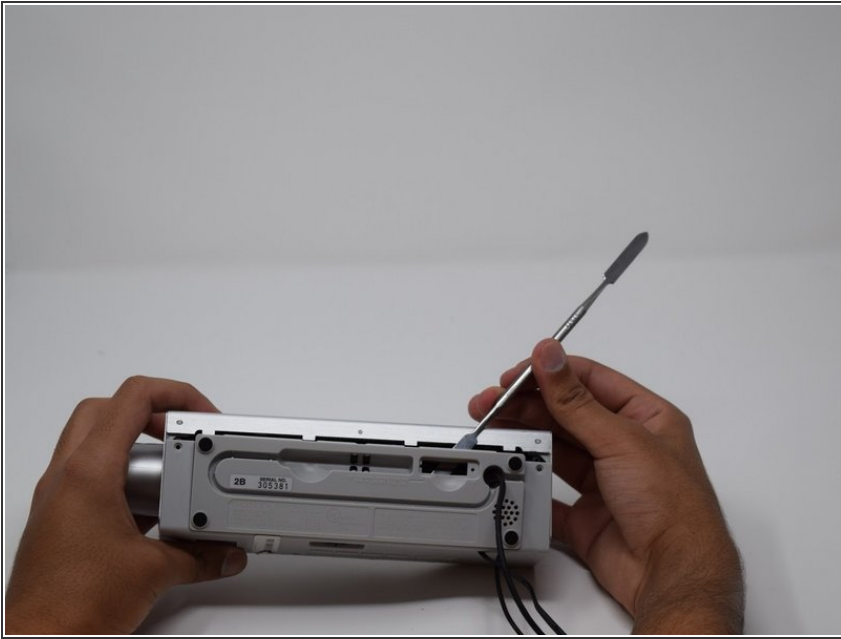
- Remove the screw from the backside cover of the Sony Dream Machine with a Phillips Screwdriver.

Step 2



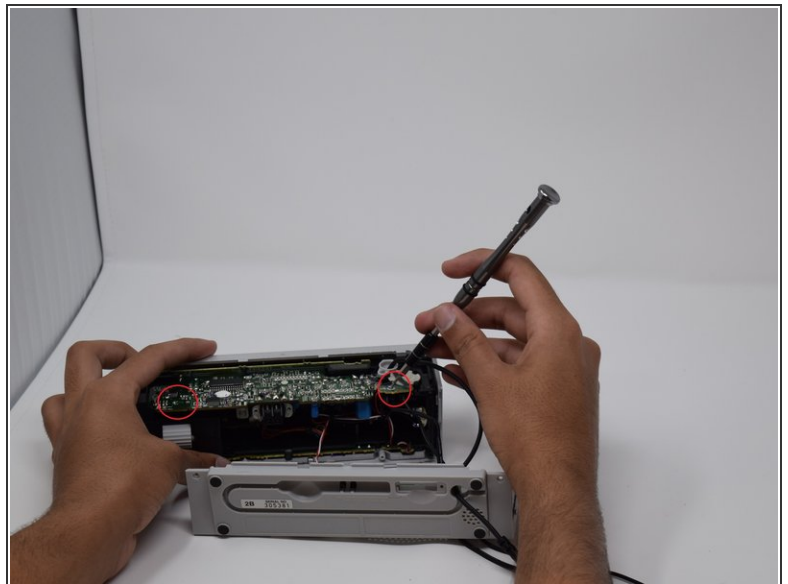
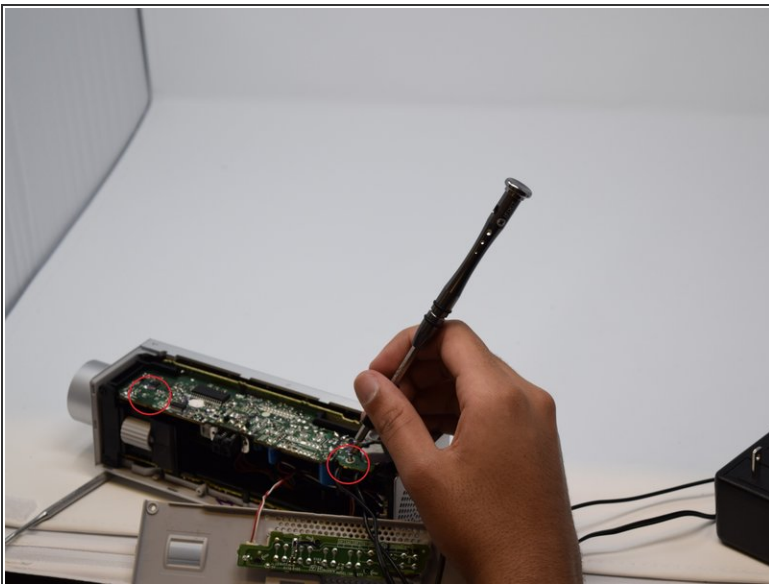
- Using your finger, carefully pull the battery from cover tab.

Step 3



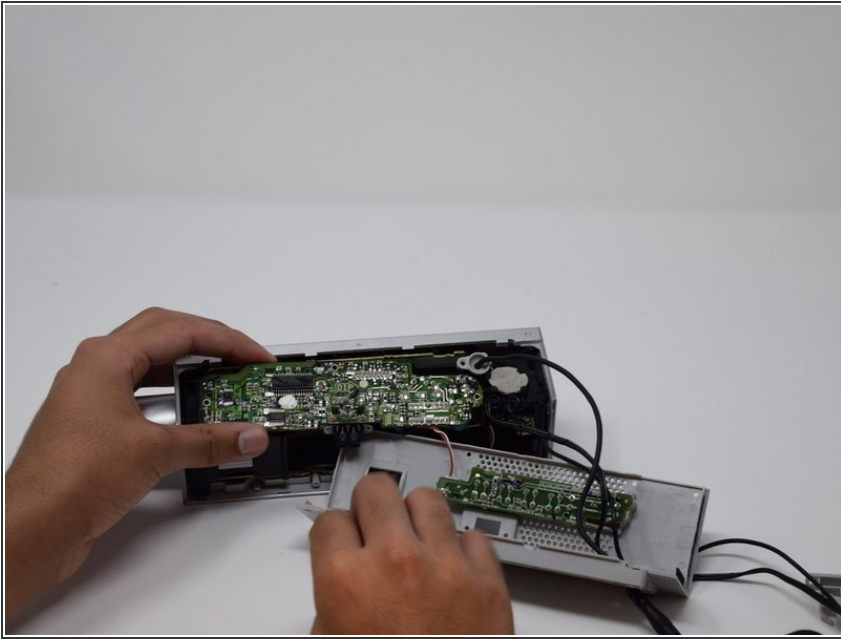
- Continue by removing the back cover of the device, pry open with a screwdriver if necessary.

Step 4



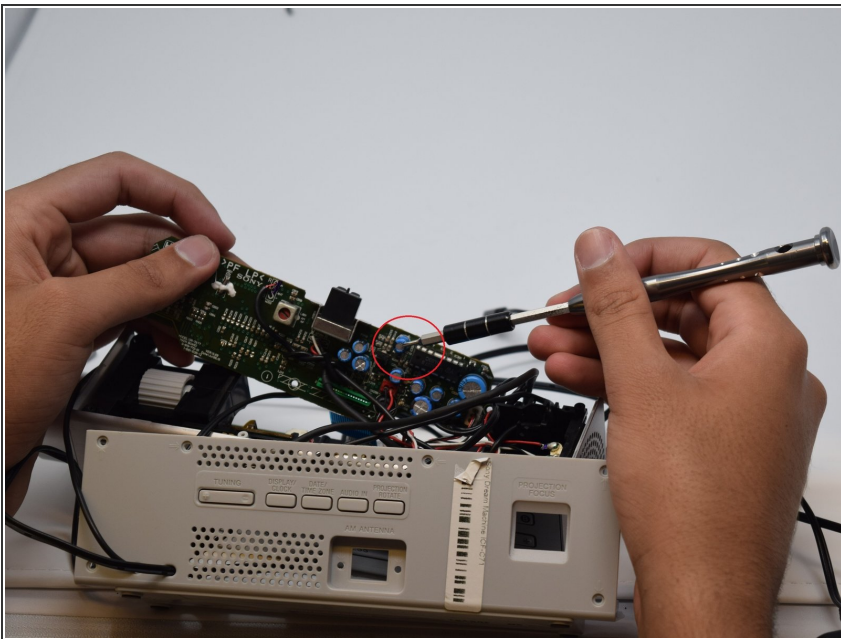
- Use a Philips screwdriver, one small enough to remove all the tiny screws from motherboard.

Step 5



- Remove the motherboard with your hands.

Step 6



- Ensure the batteries next to the antenna have not fried or been damaged.

To reassemble your device, follow these instructions in reverse order.