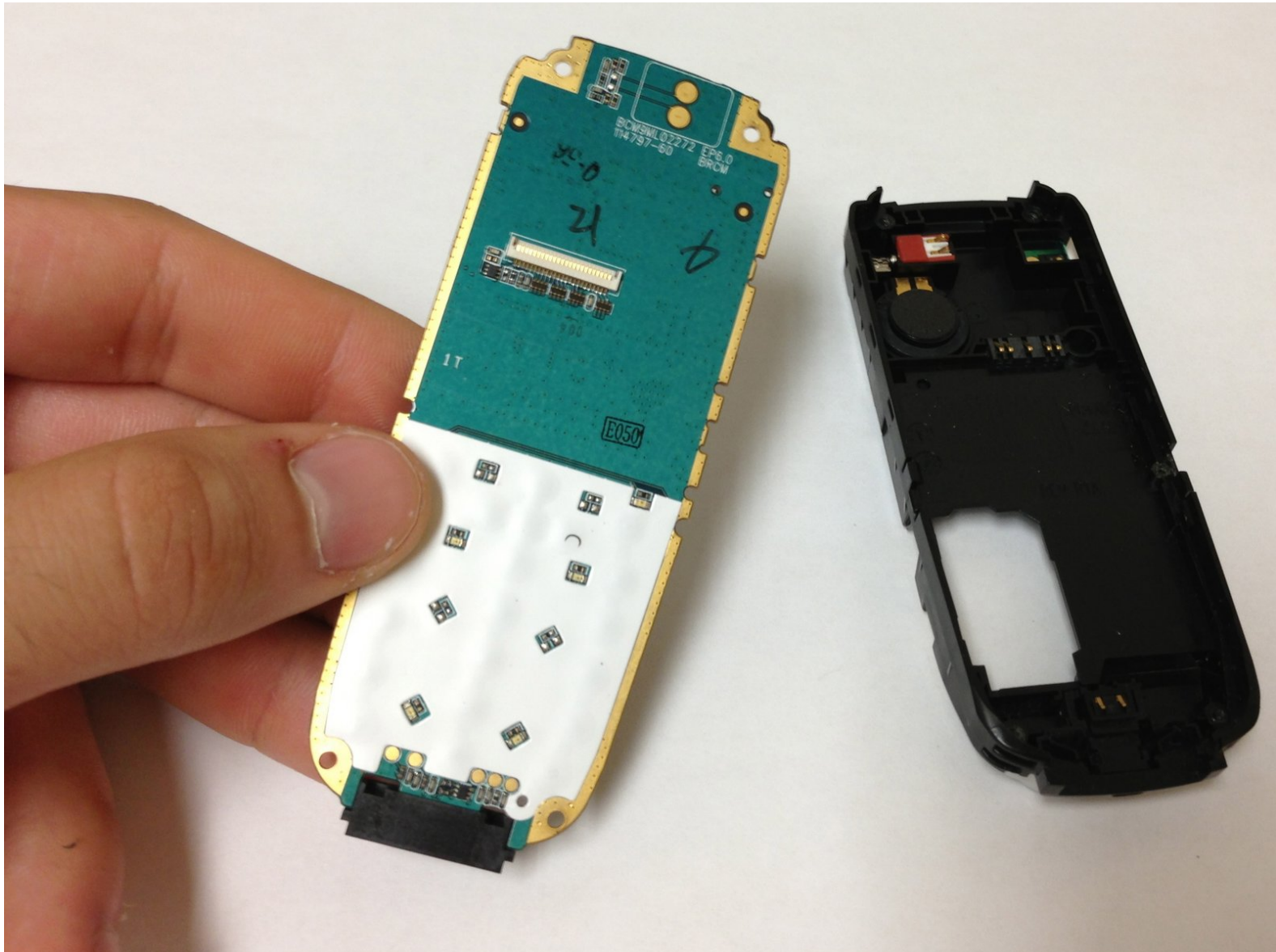




Sony Ericsson J220i Charging Port Replacement

Removing and/or replacing the charging port on the Sony Ericsson J220i.

Written By: James Au



INTRODUCTION

This guide will show the user how to disassemble a Sony Ericsson J22Oi with the intent of removing and replacing the charging port.




TOOLS:

- [T5 Torx Screwdriver](#) (1)
-

Step 1 — Battery



 Before disassembling the phone, make sure the phone is powered off.

Step 2



- Flip to the back of the phone and locate the black button on the top of the phone.

Step 3



- Firmly hold down the black button on the top of the phone and gently snap off the back cover.

Step 4



- Remove the battery by wedging it out from the back.

Step 5 — Keypad



- Flip to the front of the phone and apply pressure to the front frame of the phone. The frame should snap off easily.

Step 6



- Remove the keypad by gently pulling it from the front of the phone.

Step 7 — Screen



- Locate the five screws indicated on the phone.

Step 8



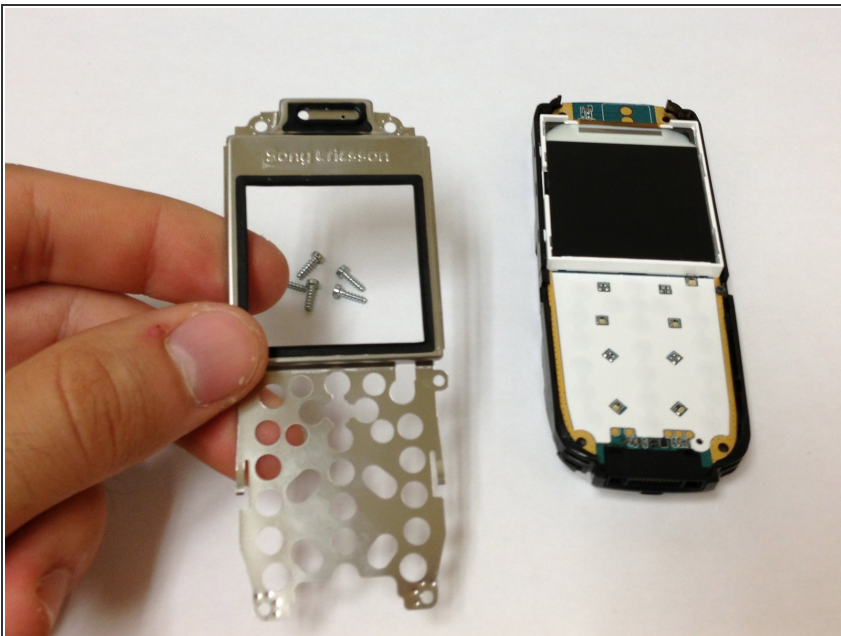
- Use a T5 Screwdriver and unscrew the five screws.

Step 9



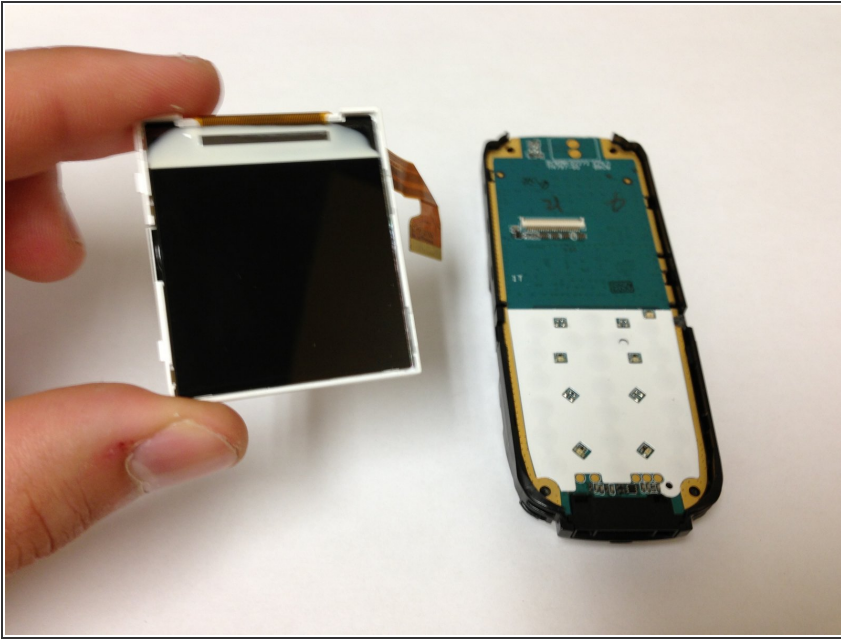
- Once the screws are off, there should be a plastic cover on top of your screen. Gently slide the plastic cover off.

Step 10



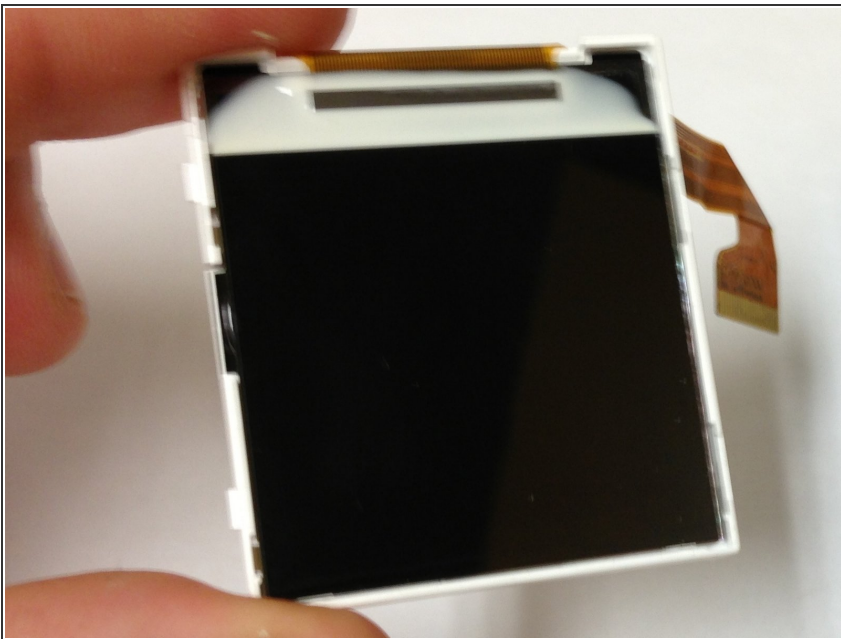
- Now gently pull metal cover off.

Step 11



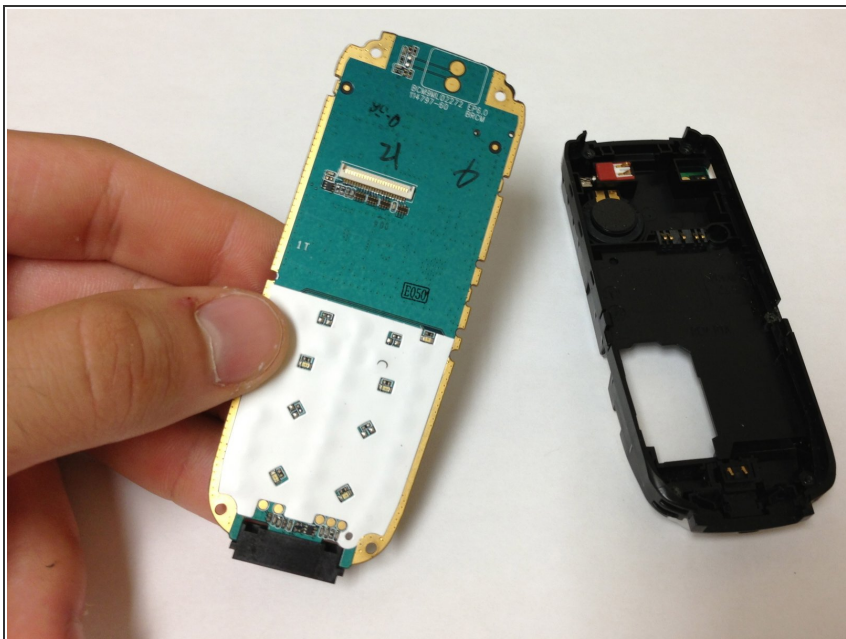
- You should now see the screen on the front side of the phone. Wedge your finger to the side of the phone. Apply some force to pop out the screen.

Step 12



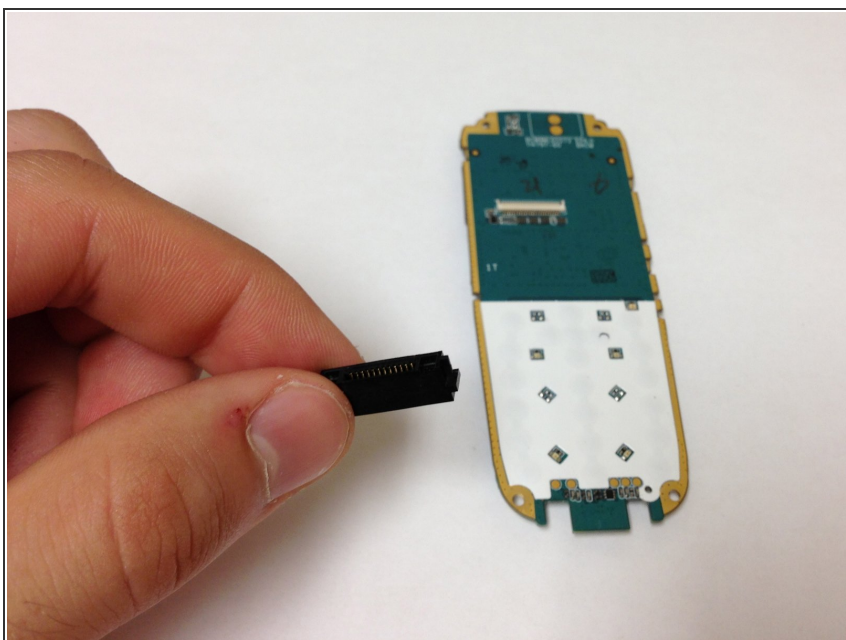
- Now that screen is removed, replace the old screen with the new screen.
- Reassemble the device by doing the steps in reverse order.

Step 13 — Charging Port



- After removing the screen, you will find the charging port located at the bottom of the phone.

Step 14



- Gently slide off the charging port.

To reassemble your device, follow these instructions in reverse order.