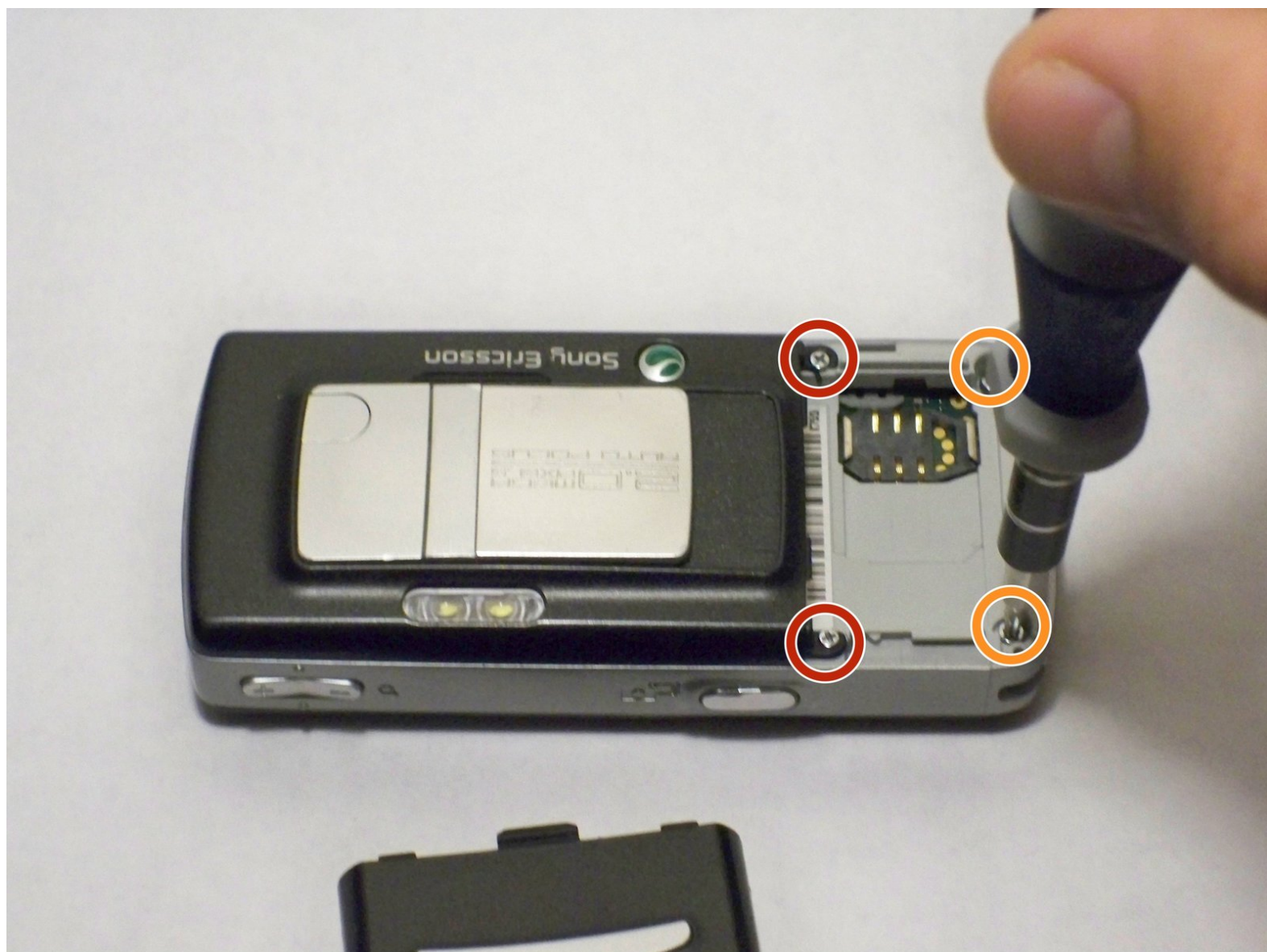




Sony Ericsson K750i Back Casing Replacement

How to replace a Sony Ericsson K750i back casing.

Written By: Abby Evers





TOOLS:

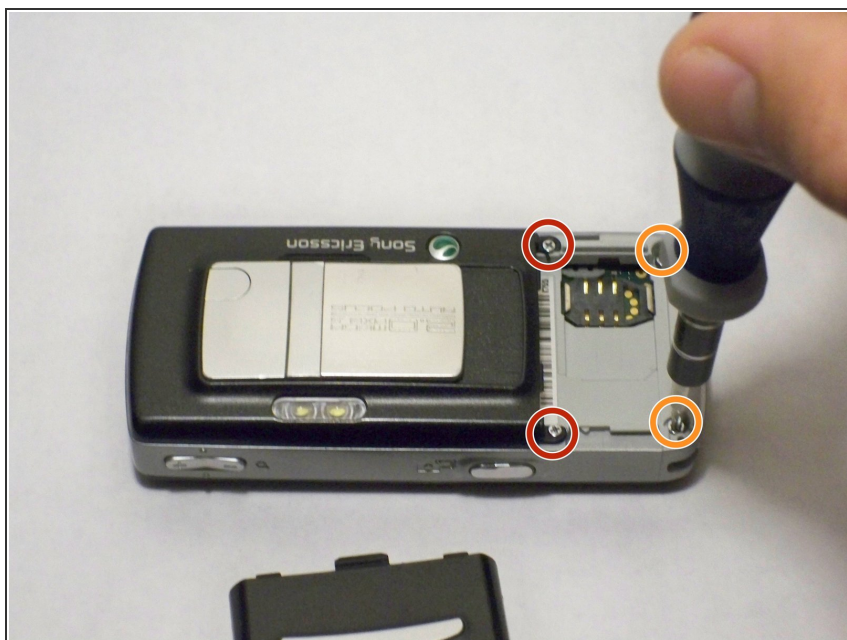
- [Phillips #0 Screwdriver](#) (1)
- [Flathead 3/32" or 2.5 mm Screwdriver](#) (1)
or small shim for prying
- [T6 Torx Screwdriver](#) (1)

Step 1 — Battery Cover



- Remove the battery cover.
- Press down firmly with your thumb and slide the cover back.

Step 2 — Back Casing



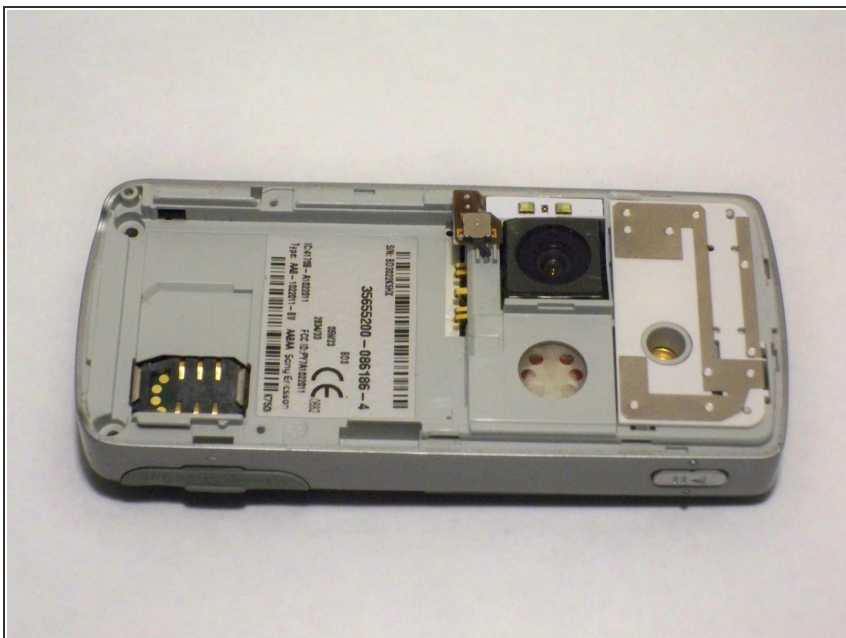
- Remove two Phillips #0 screws from the battery chamber.
- Remove two Torx T6 screws from the battery chamber.

Step 3



- Gently pry off the back casing.
- ⓘ Work an opening tool around the entire seam before attempting to pull off the casing. This action will reduce the chance of cracking the casing.

Step 4



- Remove the casing to expose the camera's components.

To reassemble your device, follow these instructions in reverse order.