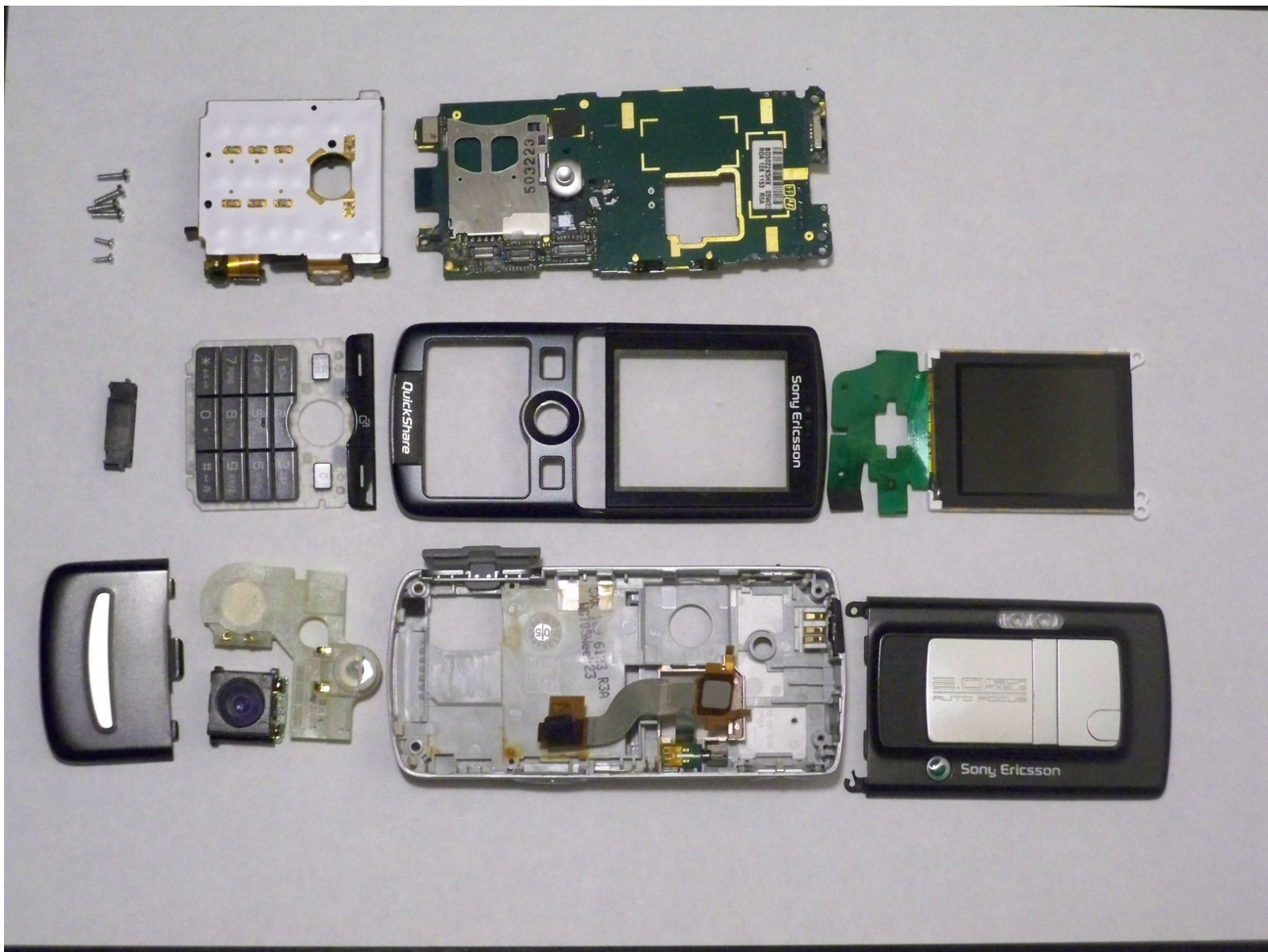




Sony Ericsson K750i Teardown

This guide is a complete teardown of the Sony Ericsson K750i. You will see how each component is removed from the phone.

Written By: Abby Evers





TOOLS:

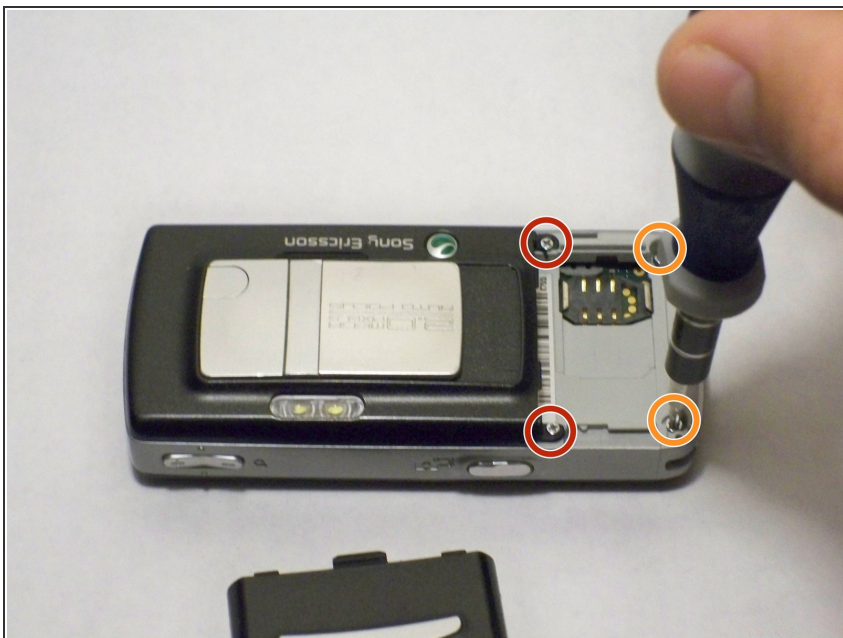
- [Phillips #0 Screwdriver](#) (1)
 - [Flathead 3/32" or 2.5 mm Screwdriver](#) (1)
 - [T6 Torx Screwdriver](#) (1)
 - [Tweezers](#) (1)
-

Step 1 — Battery Cover



- Remove the battery cover.
- Press down firmly with your thumb and slide the cover back.

Step 2 — Back Casing



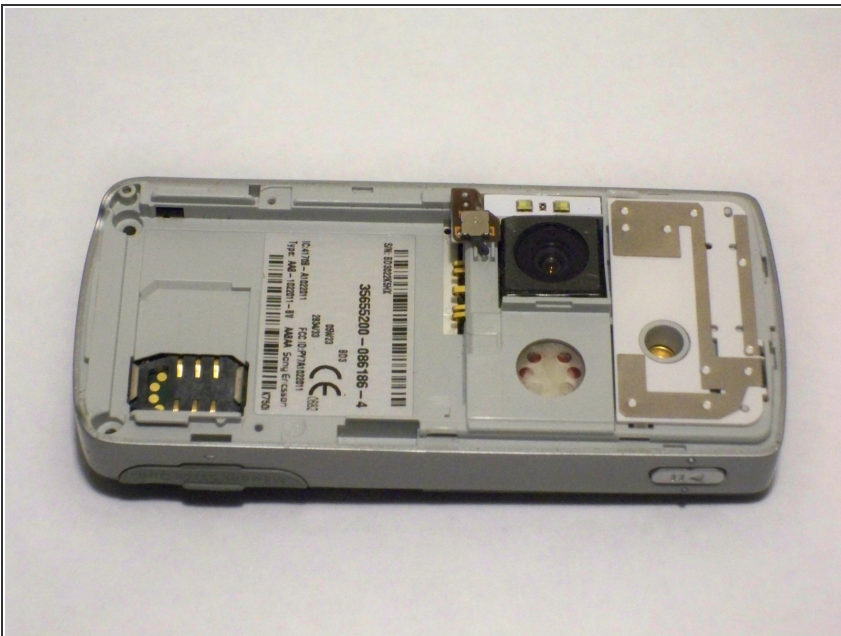
- Remove two Phillips #0 screws from the battery chamber.
- Remove two Torx T6 screws from the battery chamber.

Step 3



- Gently pry off the back casing.
- ⓘ Work an opening tool around the entire seam before attempting to pull off the casing. This action will reduce the chance of cracking the casing.

Step 4



- Remove the casing to expose the camera's components.

Step 5 — Keypad



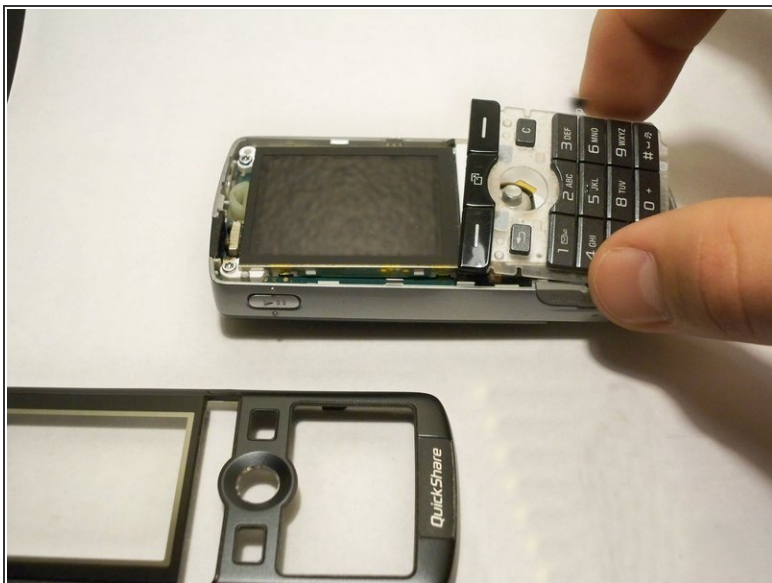
- Gently pry open the front casing by working an opening tool along the entire seam.

Step 6



- Remove the front casing by gently lifting it from the phone.
- ⓘ Be careful not to pull off any other delicate pieces.

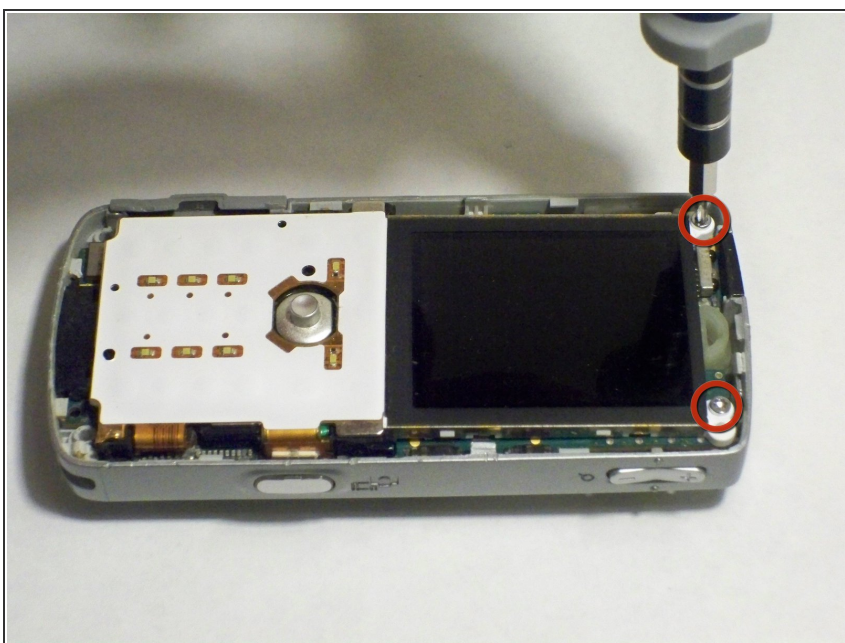
Step 7



- Remove the keypad.

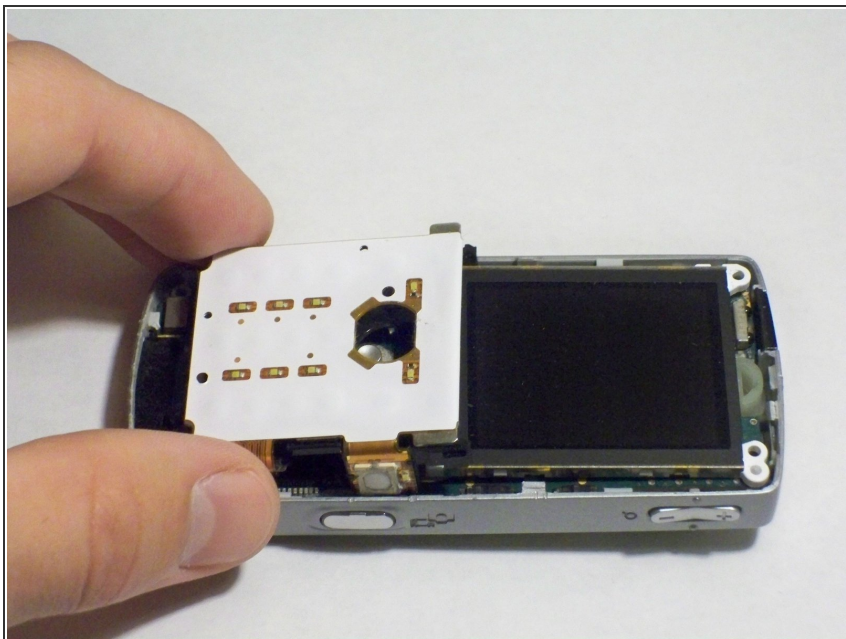
⚠ The LCD screen is very fragile. Be careful not to catch the keypad on it while removing.

Step 8 — LCD Screen



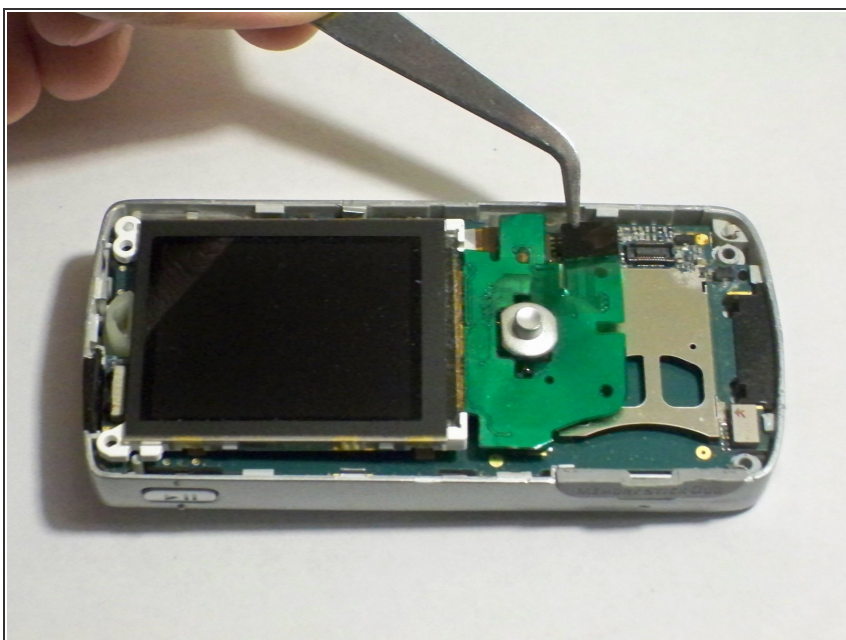
- Remove the screws holding the screen in place.

Step 9



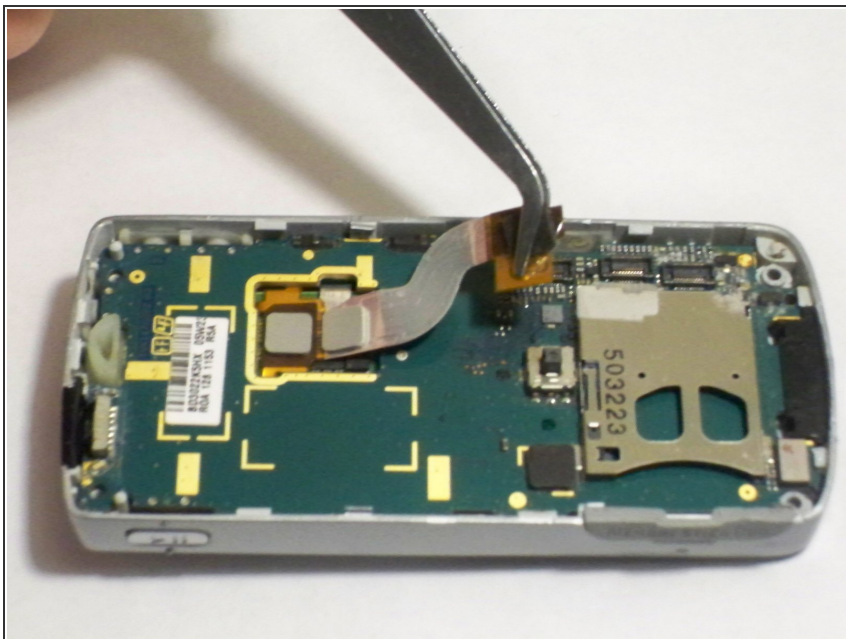
- Gently lift the base of the keypad to remove it.

Step 10



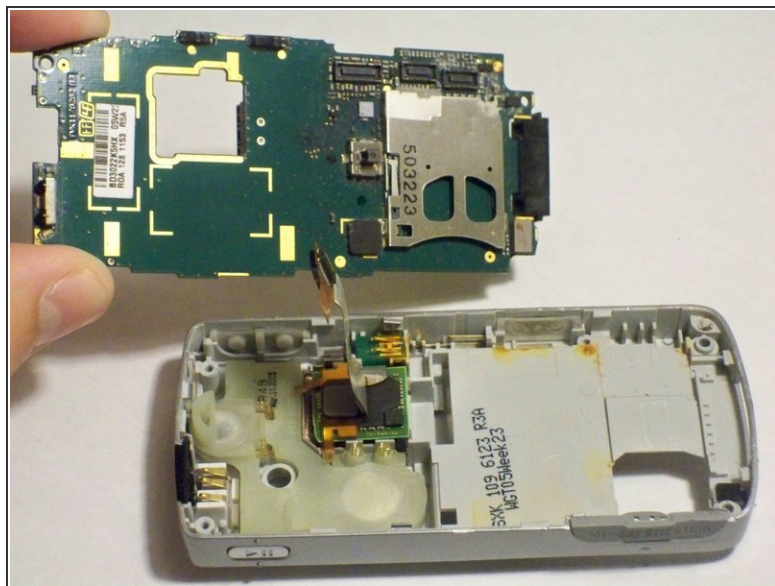
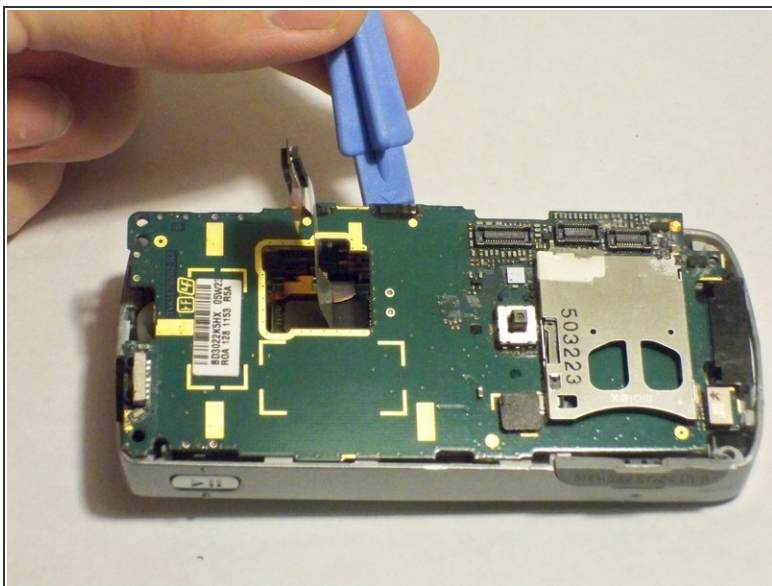
- Gently pull up the green film, avoiding the joystick.
- ⓘ The LCD screen will be attached to this film and come off with it.

Step 11 — Sony Ericsson K750i Teardown



- Remove the back cover from the phone.
- Gently slide the ribbon out of its connection.

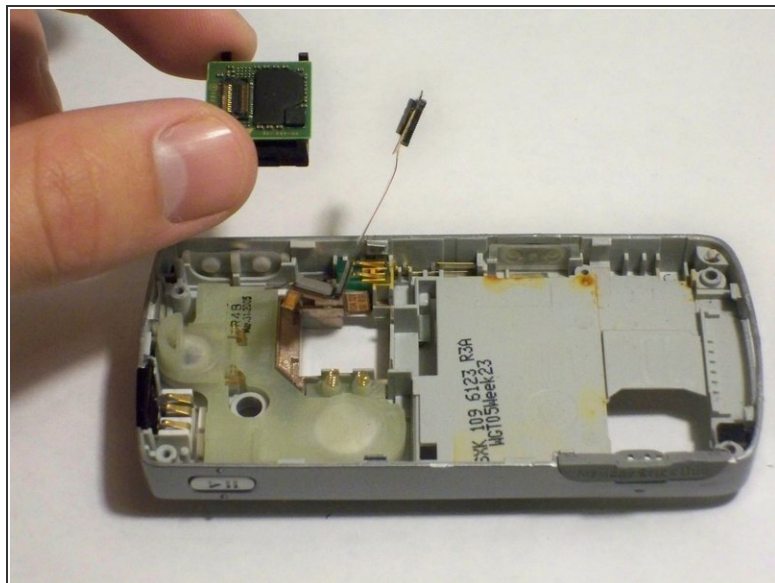
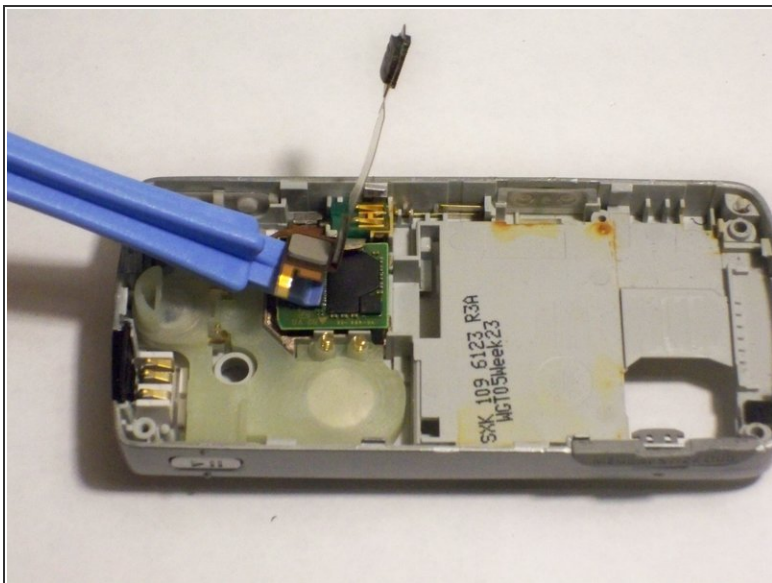
Step 12



- Lift the motherboard out of the phone.

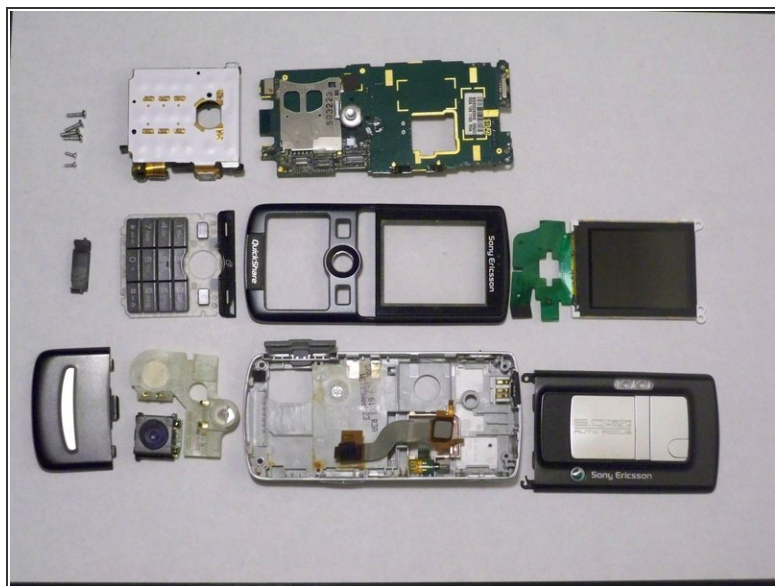
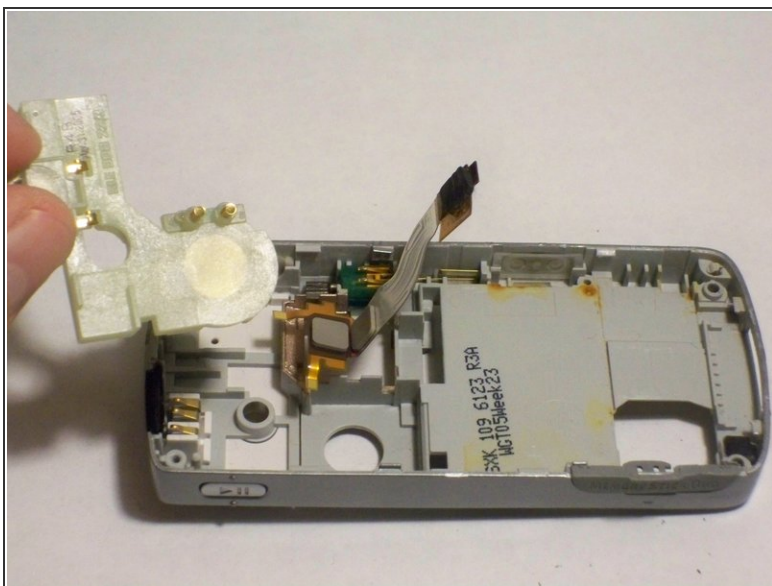
⚠ The ribbon is fragile so work the motherboard off around the ribbon to prevent damage.

Step 13



- Pry off the microchip that is located below the ribbon.

Step 14



- Lift out the plastic support to complete the teardown.

To reassemble your device, follow these instructions in reverse order.