



Sony Ericsson QuickShare T630 Screen Replacement

This guide will direct users towards an effective screen replacement.

Written By: Jeremy



INTRODUCTION

Screens for cellular devices are prone to cracking or shattering. There are several prerequisite steps required to access and remove the screen in place in your device. This guide will show you how to access the screen in order to replace in.



TOOLS:

- [Spudger](#) (1)
 - [T8 Torx Screwdriver](#) (1)
-

Step 1 — Sony Ericsson QuickShare T630 Phone Enclosure



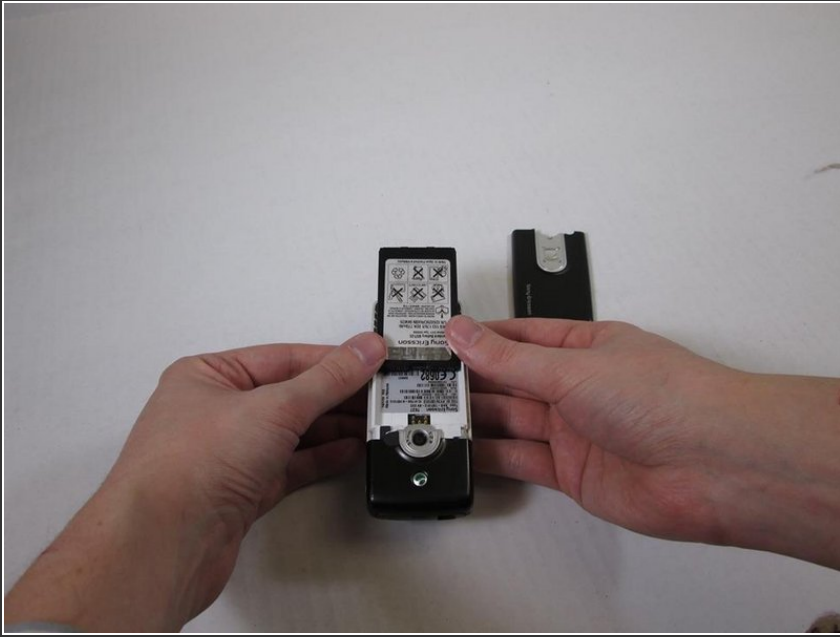
- Begin the disassembly by placing your Sony Ericsson QuickShare T630 on a flat surface.

Step 2



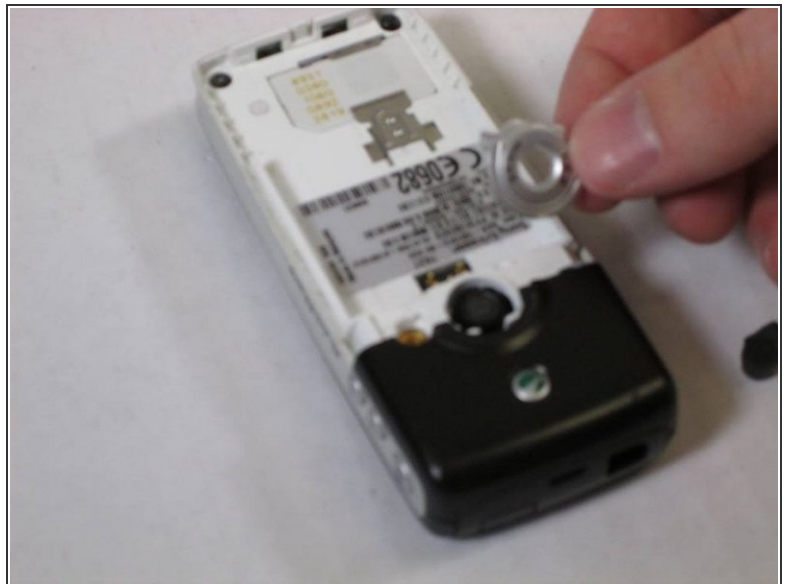
- Slide the protective panel on the backside of the phone downward and remove it entirely, revealing the battery underneath.

Step 3



- Slide the battery upward to remove.

Step 4



- Remove the rubber plug located near the camera by gently prying upward with your fingers.
- Gently lift the camera shield after removal of the rubber plug.

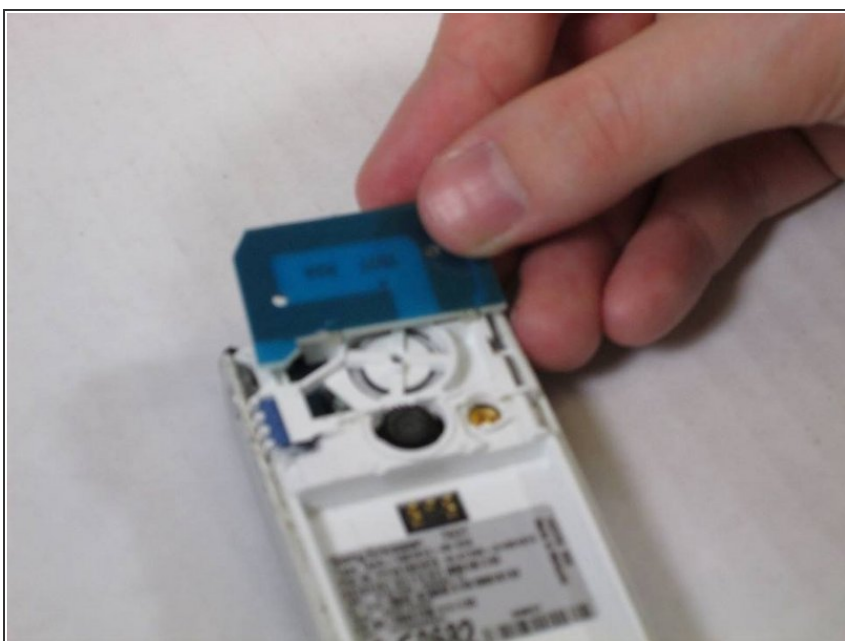
Step 5



- Pry the remaining panel to loosen its contact to the phone using a spudger.
- Slide the panel upward to remove it completely.

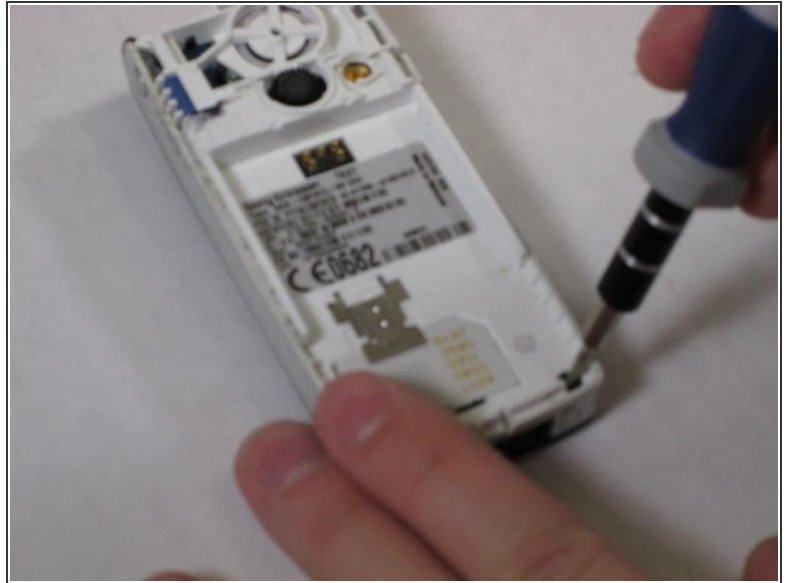
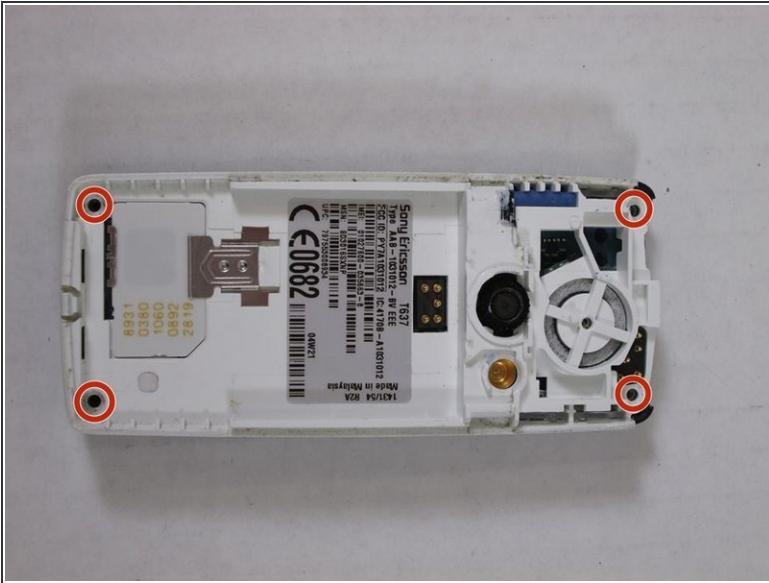
⚠ These steps will require a slight appliance of force.

Step 6



- Slide the aerial upward to remove it.

Step 7



- Remove the four screws located at each corner of the device.

Step 8



- Gently lift and remove the front panel of the phone after removing the screws.

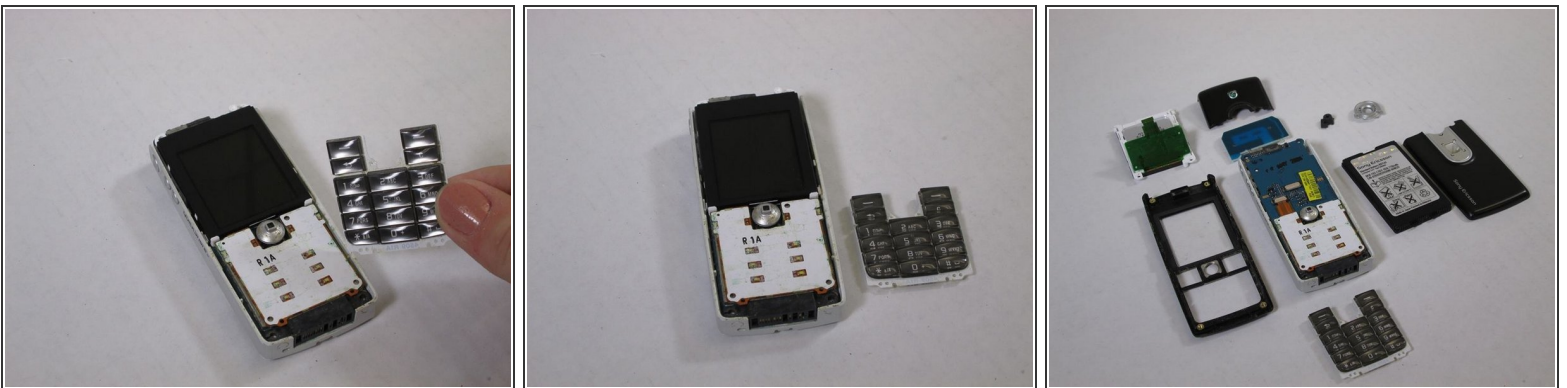
Step 9



⚠ This step is NOT required for joystick maintenance or keypad maintenance and replacement! Continue on to step 10 if you are attempting to achieve either of these goals.

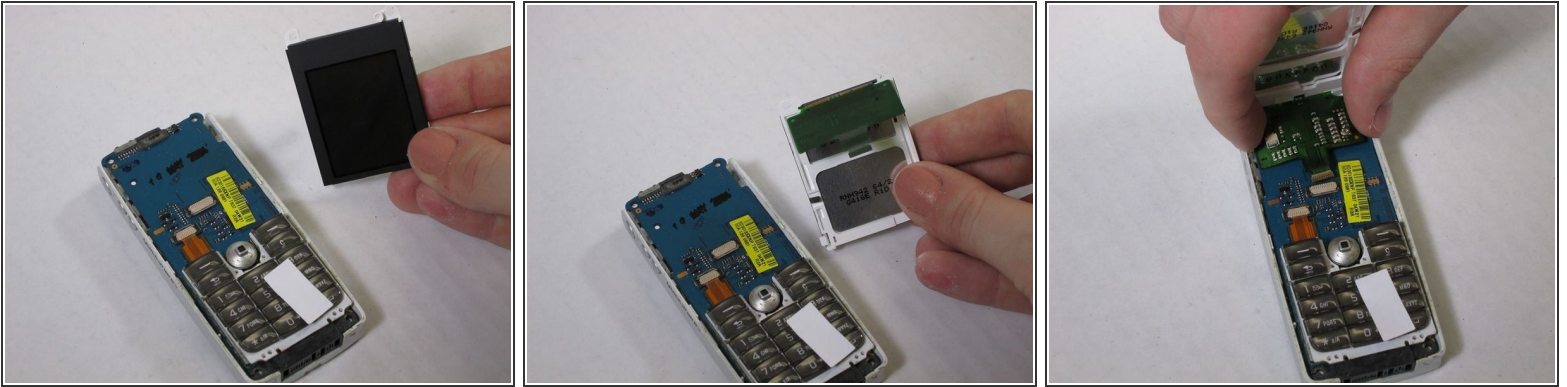
- Slowly lift the screen to reveal the green circuit ribbon connecting the screen to the phone.
- Gently pull the ribbon from the circuit.
- Remove the now disconnected screen.

Step 10



- Remove the keyboard by slowly pulling it away from the circuit board.
- i** There are no direct connections between the keyboard and phone.
- i** These are all of the parts covered in this disassembly that make up the Sony Ericsson QuickShare T630.

Step 11 — Sony Ericsson QuickShare T630 Screen



- To place a new screen, slide the green ribbon connector into the ribbon clamp that the defective screen was pulled from.

To reassemble your device, follow these instructions in reverse order.