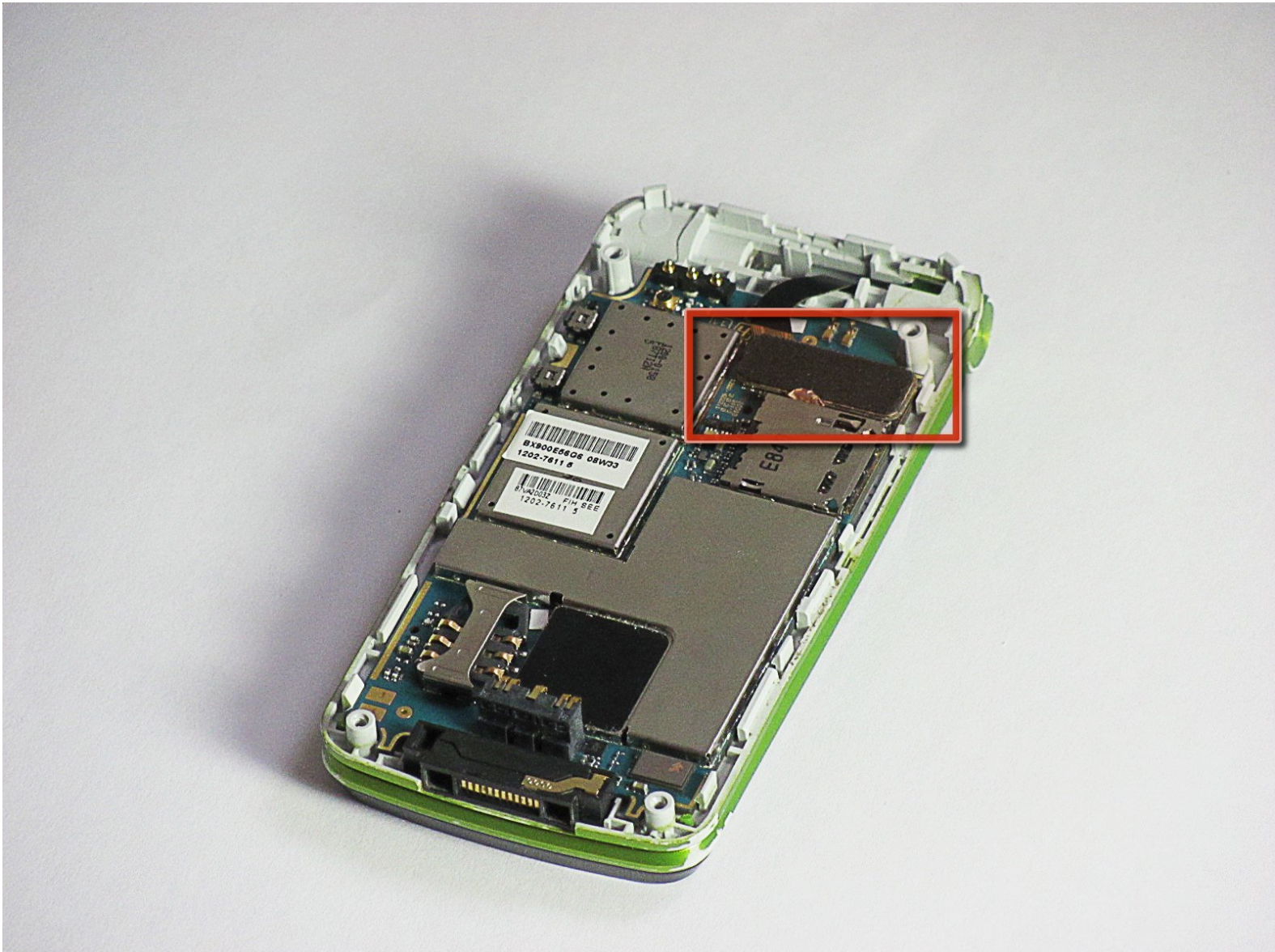




Sony Ericsson TM506 Motherboard Replacement

Install the motherboard for the Sony Ericson TM506 cell phone.

Written By: Daniel



INTRODUCTION

This guide provides instruction for installing a motherboard for the Sony Ericsson TM506 cell phone.



TOOLS:

- [iFixit Opening Tools](#) (1)
 - [T6 Torx Screwdriver](#) (1)
-

Step 1 — Battery Cover



- Firmly hold the phone between your fingers with your thumb on the battery cover.
- Push down with your thumb until the battery cover comes off.

Step 2 — Back Case



- Unscrew the bottom two 5.4mm screws with a Torx T6 screwdriver.

Step 3



- Remove the two rubber casings for the top two screws with a plastic opening tool.

Step 4



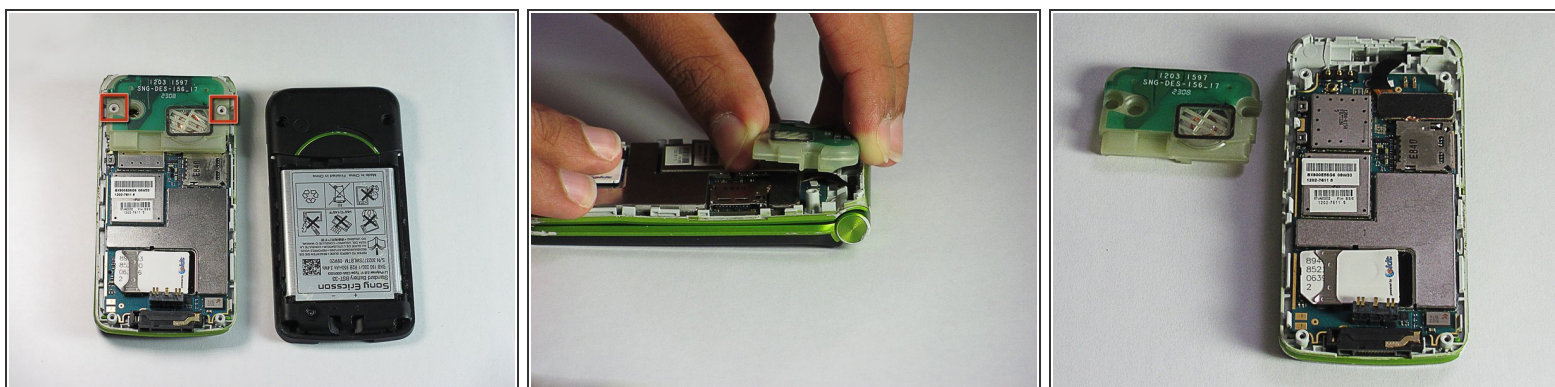
- Unscrew these two 5.4mm screws with a Torx T6 screwdriver.

Step 5



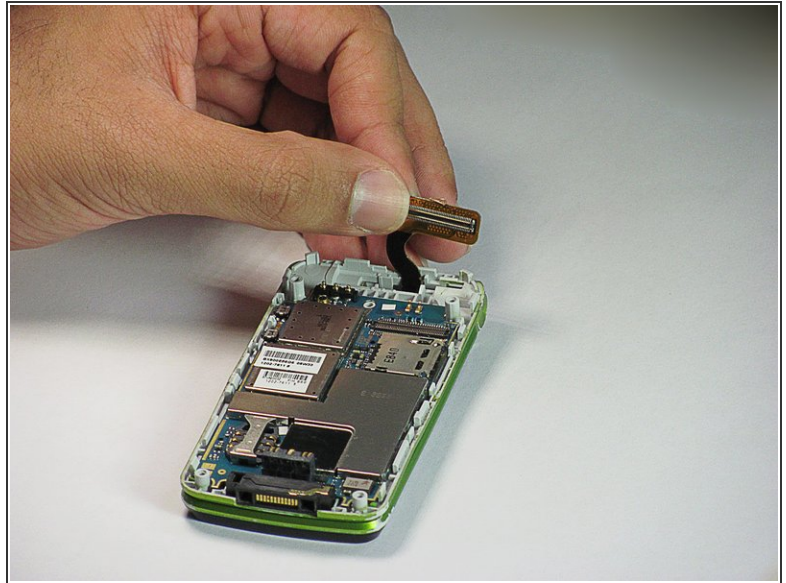
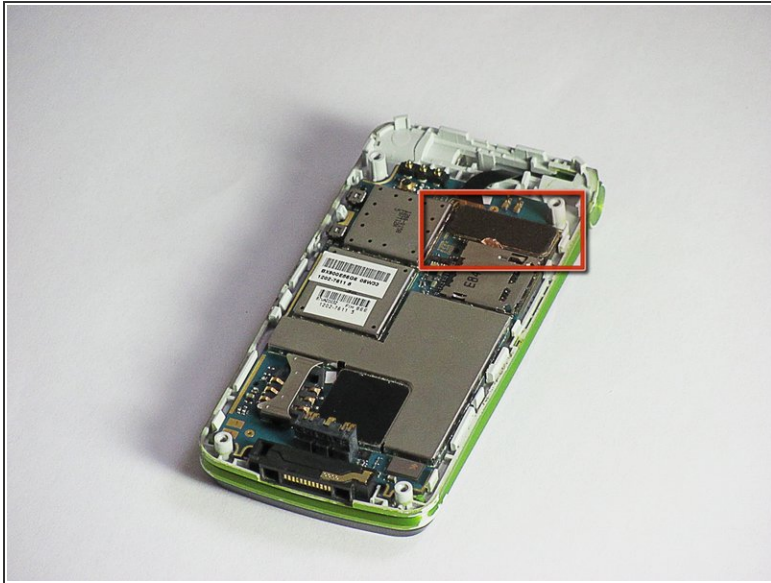
- There are eight snap hooks located around the outer case. Carefully snap these to remove the outer case.

Step 6 — Sound Box



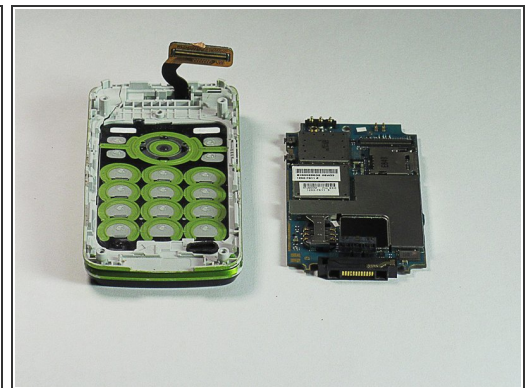
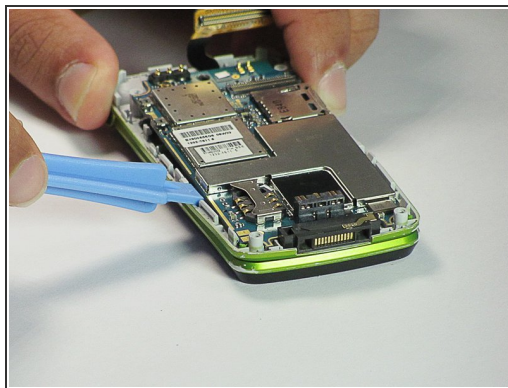
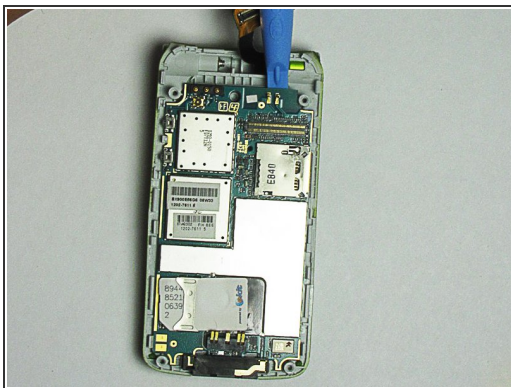
- The sound box is attached to the case by two snap hooks.
- Lift the sound box up to remove it from the case.

Step 7 — Motherboard



- Locate the 80-pin connector.
- Carefully, lift up on the connector to separate it from the board.

Step 8



- There are two snap hooks that attach the motherboard to the case.
 - Using a plastic opening tool, carefully lift up on the motherboard to detach it.
- ⚠ The motherboard is extremely fragile. Try to be forceful yet delicate in the removal because it will not come off easily.

To reassemble your device, follow these instructions in reverse order.