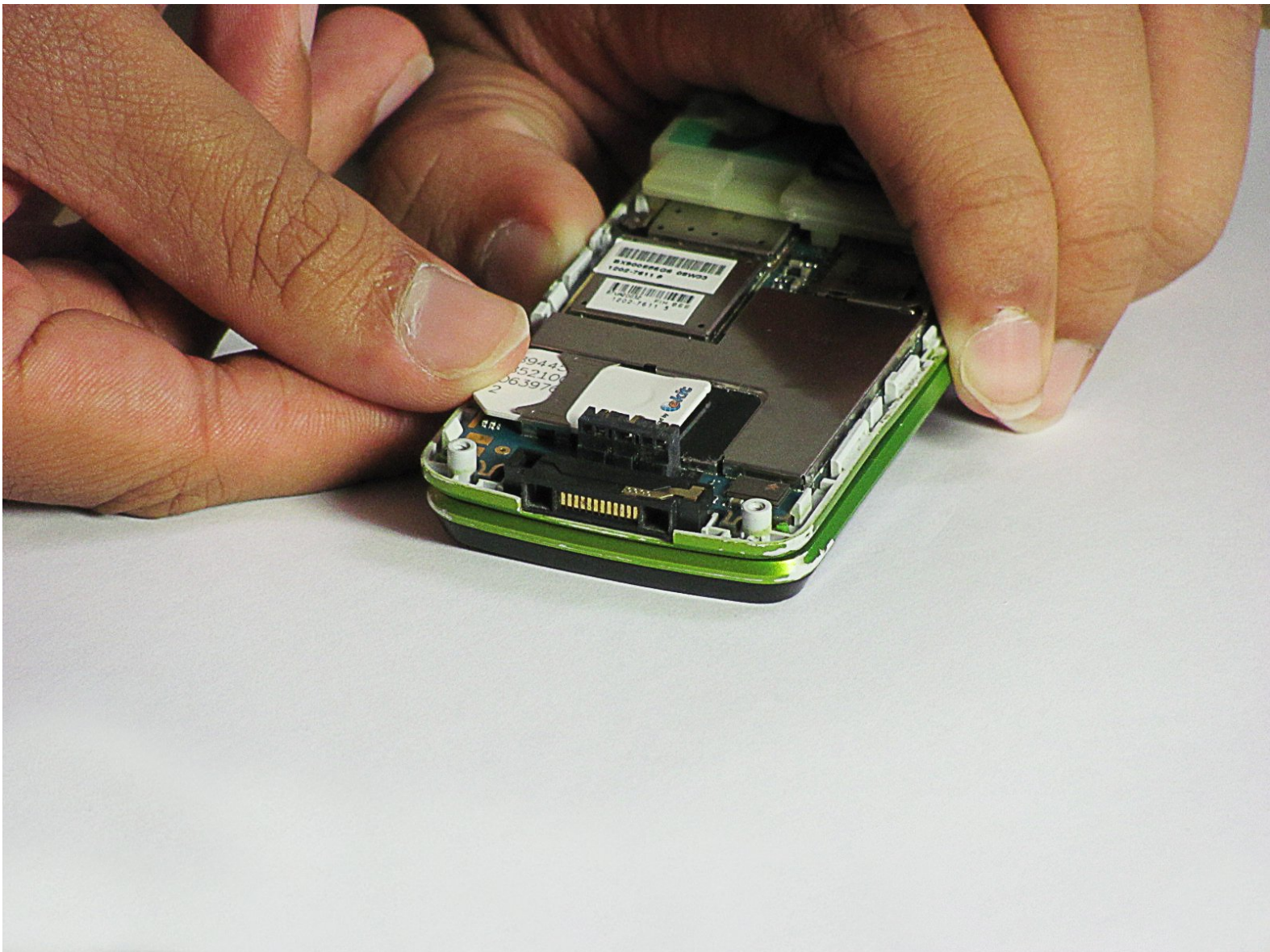




# Sony Ericsson TM506 Sim Card Replacement

Install a sim card for the Sony Ericsson TM506 phone.

Written By: Daniel



---

## INTRODUCTION

This guide provides instruction for installing a sim card for the Sony Ericsson TM506 cell phone.

---



### TOOLS:

- [T6 Torx Screwdriver](#) (1)
-

## Step 1 — Battery Cover



- Firmly hold the phone between your fingers with your thumb on the battery cover.
- Push down with your thumb until the battery cover comes off.

## Step 2 — Back Case



- Unscrew the bottom two 5.4mm screws with a Torx T6 screwdriver.



## Step 3



- Remove the two rubber casings for the top two screws with a plastic opening tool.

## Step 4



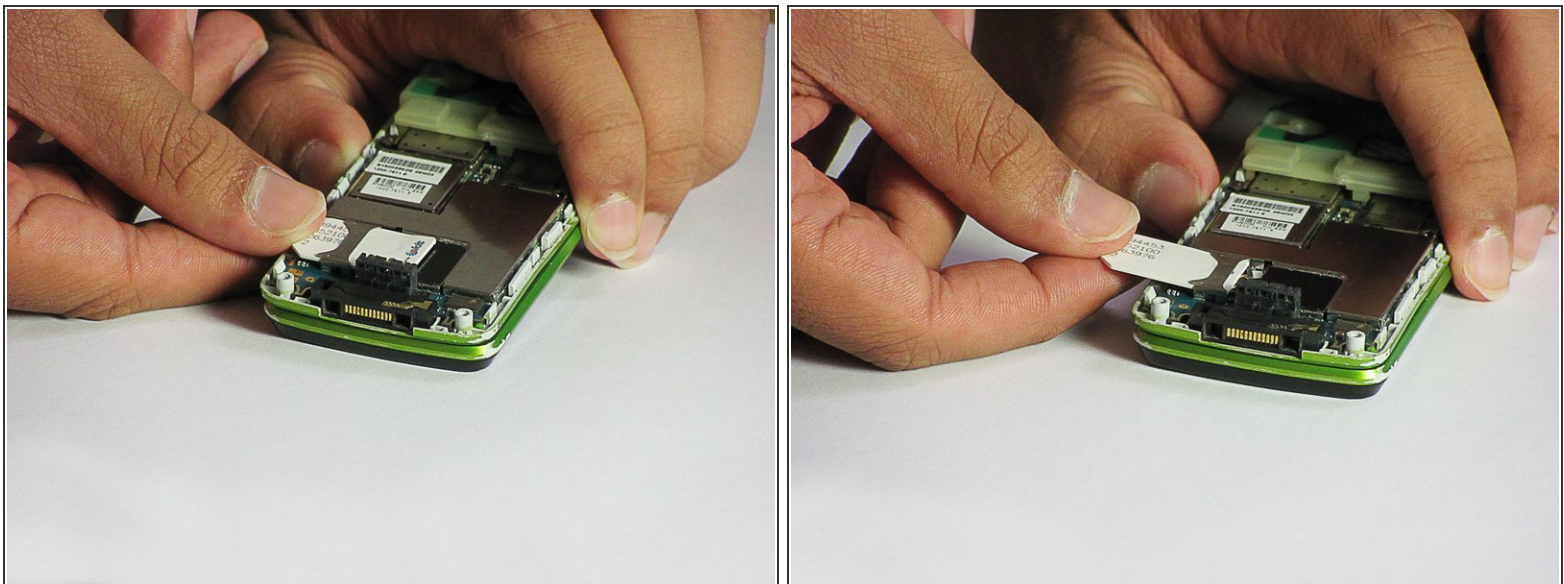
- Unscrew these two 5.4mm screws with a Torx T6 screwdriver.

## Step 5



- There are eight snap hooks located around the outer case. Carefully snap these to remove the outer case.

## Step 6 — Sim Card



- The Sim card can simply be pulled out through the opening.

To reassemble your device, follow these instructions in reverse order.