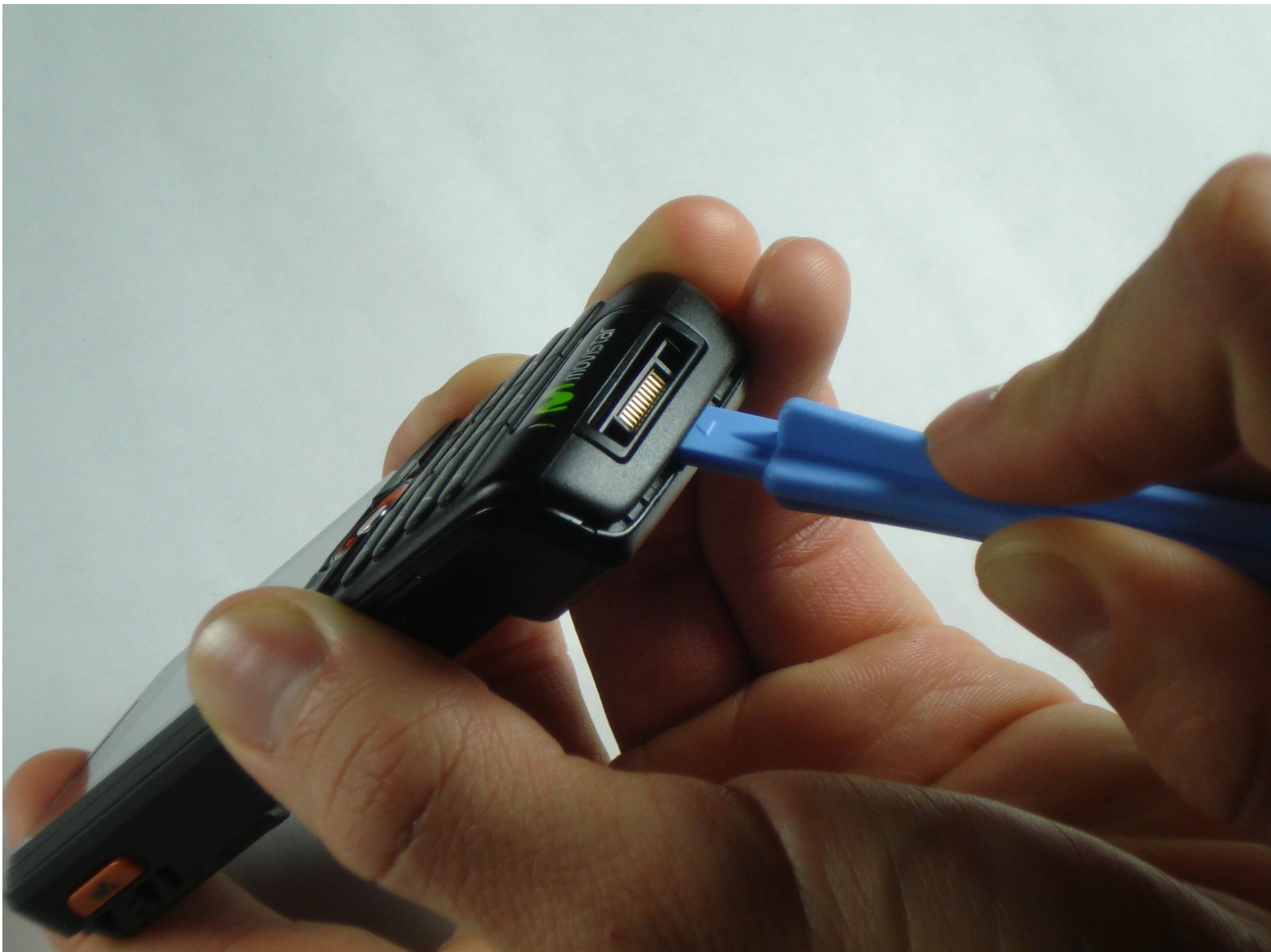




Sony Ericsson W200i Front Case Replacement

Guide to remove the front casing of the Sony Ericsson W200i.

Written By: Emily Prescott



INTRODUCTION

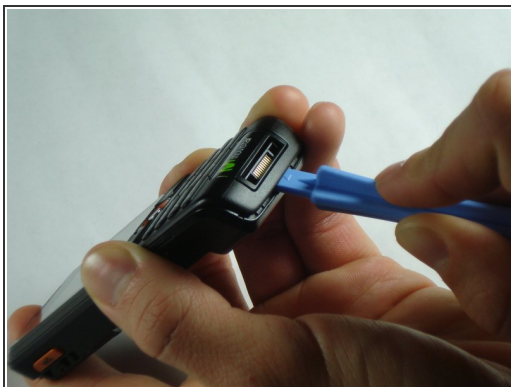
Removing the front case is easy, just be careful when you take it off.



TOOLS:

- [iFixit Opening Tools](#) (1)
-

Step 1 — Front Case



- Insert the plastic opening tool in between the front case and the back case.
 - Apply downward pressure to make the case lift upwards, thus popping the front case off.
- ⚠ Use caution when removing the front case. It may seem stuck but just ease it out.

To reassemble your device, follow these instructions in reverse.