



Sony Ericsson W200i Keypad Replacement

This guide will be helpful for replacing the keypad that is located beneath front case. This guide will provide step by step instructions on how to carefully and properly replace the keypad.

Written By: Nestor Trevino



INTRODUCTION

Replacing the keypad requires that the front case be removed.



TOOLS:

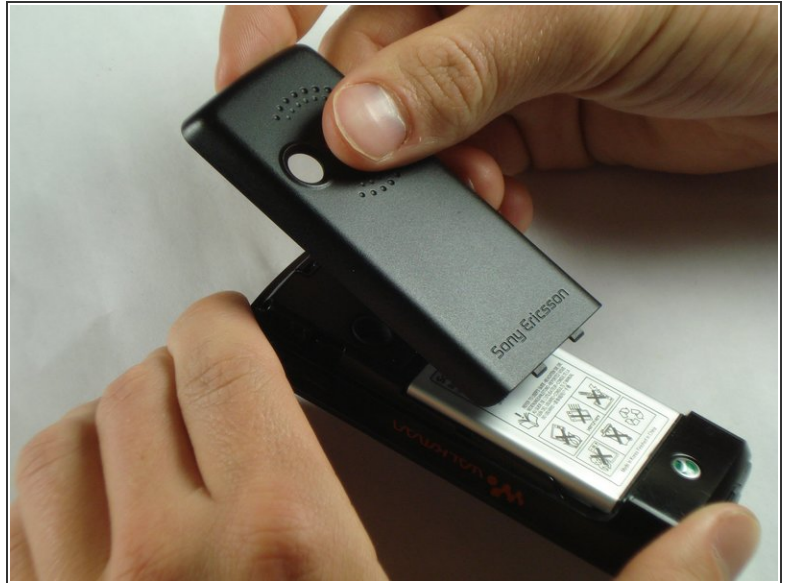
- [iFixit Opening Tools](#) (1)
- [T6 Torx Screwdriver](#) (1)



PARTS:

- [Keypad](#) (1)
Sony Ericsson W200i keypad
<http://www.dinodirect.com/Sony-Ericsson-W200-Keypad-Black.html>

Step 1 — Disassembling Sony Ericsson W200i Battery



- Slide the battery cover up and off the phone.

Step 2



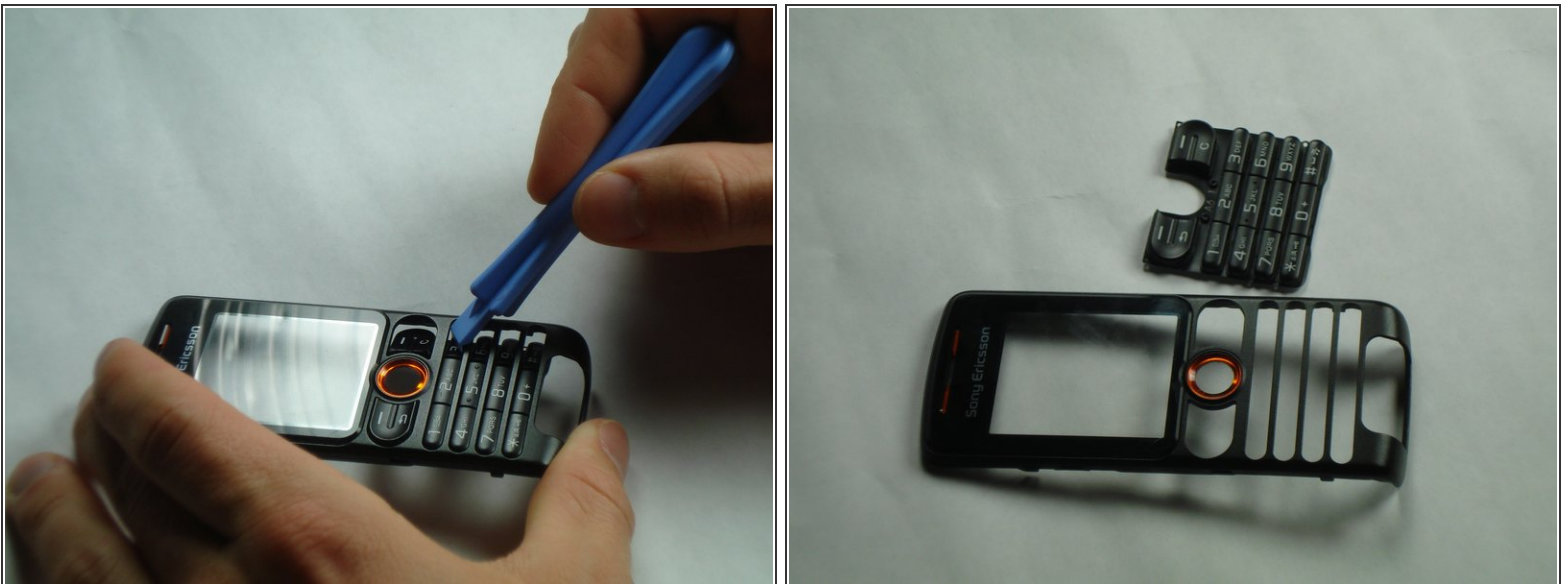
- Pop the battery out of its slot by lifting it up.

Step 3 — Front Case



- Insert the plastic opening tool in between the front case and the back case.
 - Apply downward pressure to make the case lift upwards, thus popping the front case off.
- ⚠ Use caution when removing the front case. It may seem stuck but just ease it out.

Step 4 — Keypad



- Using the plastic opening tool, press down anywhere on the keypad to separate it from the front case.

To reassemble your device, follow these instructions in reverse order.