



Sony Ericsson W300i Camera Replacement

How to replace the camera in the Sony Ericsson W300i cell phone.

Written By: Laura Inbody





TOOLS:

- [T6 Torx Screwdriver](#) (1)
 - [iFixit Opening Tools](#) (1)
-

Step 1 — Camera



- The tools you will need for this step is the prying tool and the T6 Torx screwdriver.

Step 2



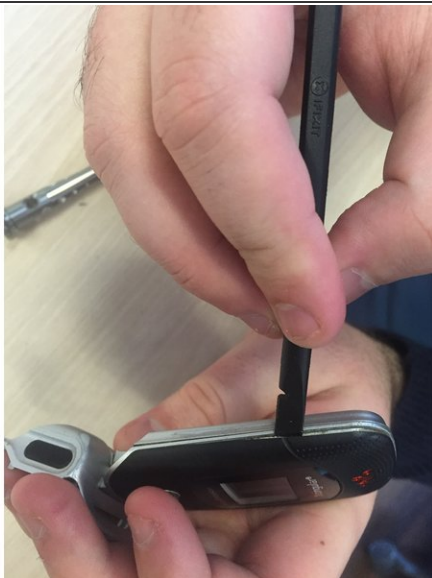
- Remove the back cover of the phone by pushing downwards with your thumbs.

Step 3



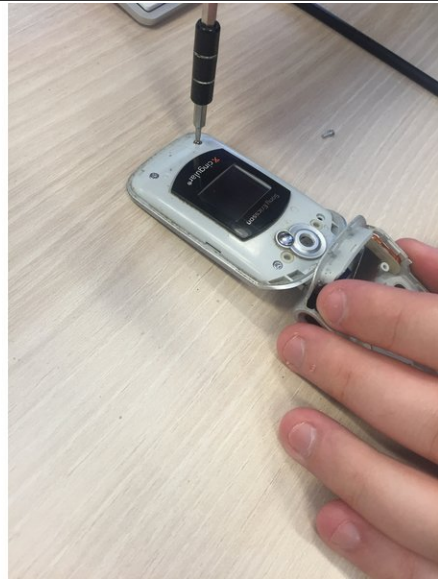
- Now, remove the battery from the phone by gently prying the battery out.

Step 4



- Remove the front plate from the phone by using the prying tool.

Step 5



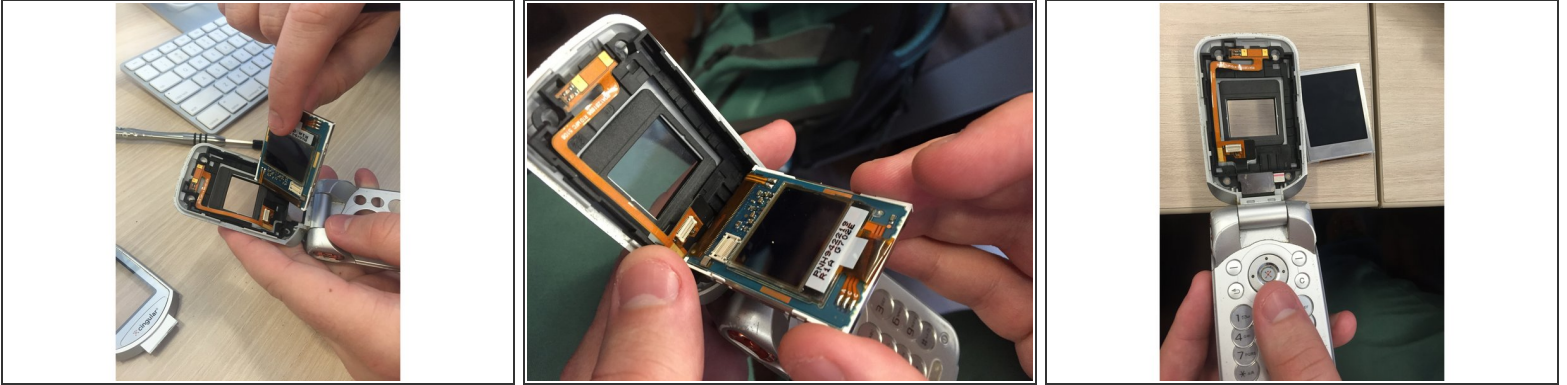
- You now have access to the four screws that hold the front of the phone together. Remove the four screws.

Step 6



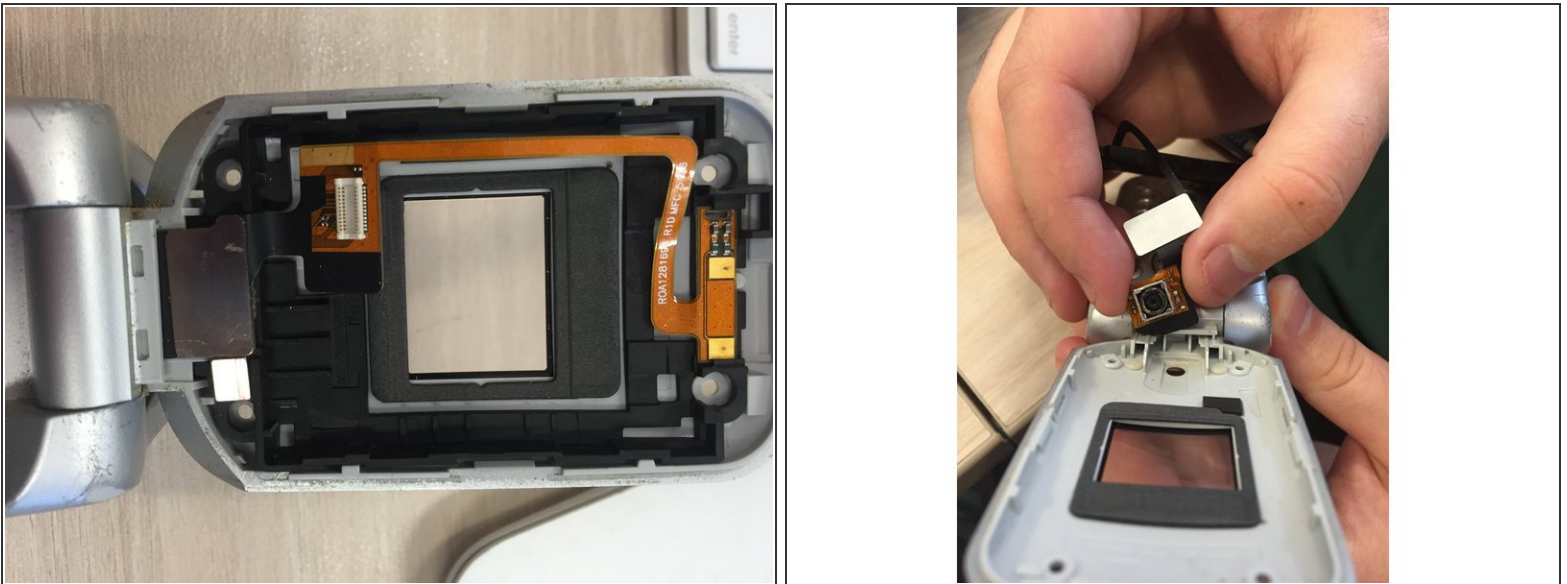
- Use the prying tool to separate the two parts of the top of the phone

Step 7



- Use your fingers to remove the screen and unplug the ribbon cable from the bottom right corner of the back of the screen.

Step 8



- Now you have access to the camera, which is the silver plate at the bottom of the phone. Remove the camera and replace with a new camera.

To reassemble your device, follow these instructions in reverse order.