



Sony Ericsson W300i Main Screen Replacement

A torx 6 screwdriver and a pry tool is all you need to replace a damaged screen on your W300i. This task will take around fifteen minutes.

Written By: Michael Faist



INTRODUCTION

This guide presents how to replace the Sony Ericsson W300i main screen. Screen replacement may be necessary if the phone screen has been damaged or is not functioning.

TOOLS:

- [T6 Torx Screwdriver](#) (1)
 - [iFixit Opening Tools](#) (1)
-

Step 1 — Main Screen



- Here is the phone in question: The Sony Ericsson W300i.
- To access the interior of the phone, you need the a plastic opening tool, and a T6 Torx screwdriver.

Step 2



- Before removing the screen, you must first remove the battery.
- Remove the battery cover by applying pressure while sliding the base cover away from the phone and then lifting the cover up.

Step 3



- Using your fingers, lift the end of the battery up and then pry the battery from the phone base.
- ☑ During reassembly you must reinsert the battery so the gold markings are at the top of the battery.

Step 4



- ⓘ This step may take a few minutes.
- Remove the front plate off the phone with a plastic opening tool to gain access to the screws beneath.
 - Use the point indicated on the photo as a good prying point.
- ⓘ Use a moderate amount of force.
- ⚠ Be aware of the sharp edges of the prying tool.

Step 5




- Use the T6 Torx screwdriver to remove the four screws.

⚠ Place screws in a safe location to avoid losing them.


Step 6



 This step may take a few minutes.

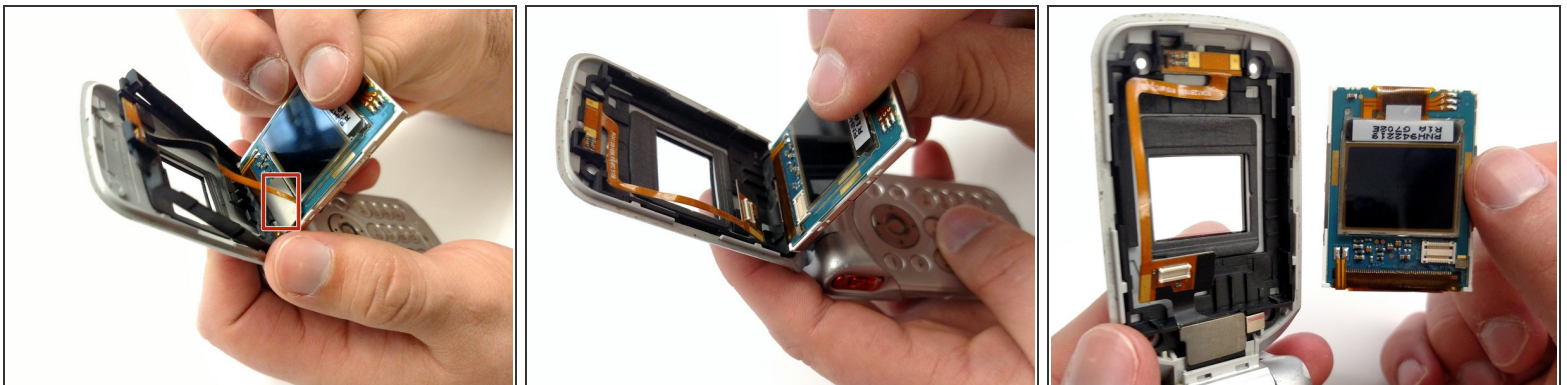
- Use a plastic opening tool to separate the screen cover from the top half of the phone.
 - Slide the corner of the opening tool along the side of the phone toward the bottom corner.
 - With the phone screen facing away from you, press into the screen crevice at an angle so that the tool pushes away towards the main screen.

 Use a moderate amount of force.

 Be aware of the sharp edges of the prying tool.

- Once the seal has been broken, tug the cover away.

Step 7



- Use your fingers to pry the plug end of the orange ribbon cable away from the screen.
- Remove screen.

Step 8



- Using the new screen, reattach the plug end of the orange ribbon cable.
- Push new screen into the phone.

Reassemble the phone following the steps in reverse.