



Sony Ericsson W350a SIM Card Replacement

This guide will instruct the user on installing a SIM card into the phone.

Written By: Parker Stroble





TOOLS:

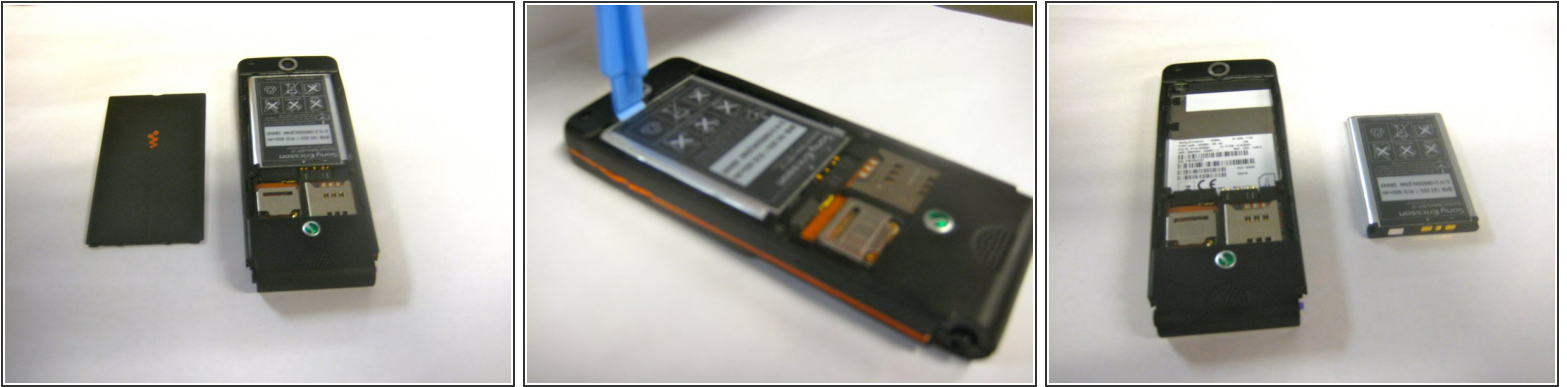
- [iFixit Opening Tools](#) (1)
-

Step 1 — Battery



- Lie phone screen down on a flat smooth surface so that the camera, logos, and speaker face up.
- Using the provided notch on the bottom of the back cover, insert a plastic opening tool and lift upwards to remove the back cover of the phone.

Step 2



- Lie the cover beside the phone upon removal. Your assembly should appear as shown this far.
- Insert the plastic opening tool into the crevice between the camera and the battery of the phone. Using a gentle prying motion, lift the end of the battery and remove.
- After removal, recycle the defective battery appropriately. Take the replacement battery and lie it near the phone as shown. Your assembly should resemble the presented picture. Note that the cover is not included in this particular photo.

Step 3 — SIM Card



- Slide the SIM card into the lower right slot identified by the circle in the picture, ensuring the contacts are aligned properly.

To reassemble your device, follow these instructions in reverse order.