



Sony Ericsson W350a Speaker Replacement

Written By: Ldellos





TOOLS:

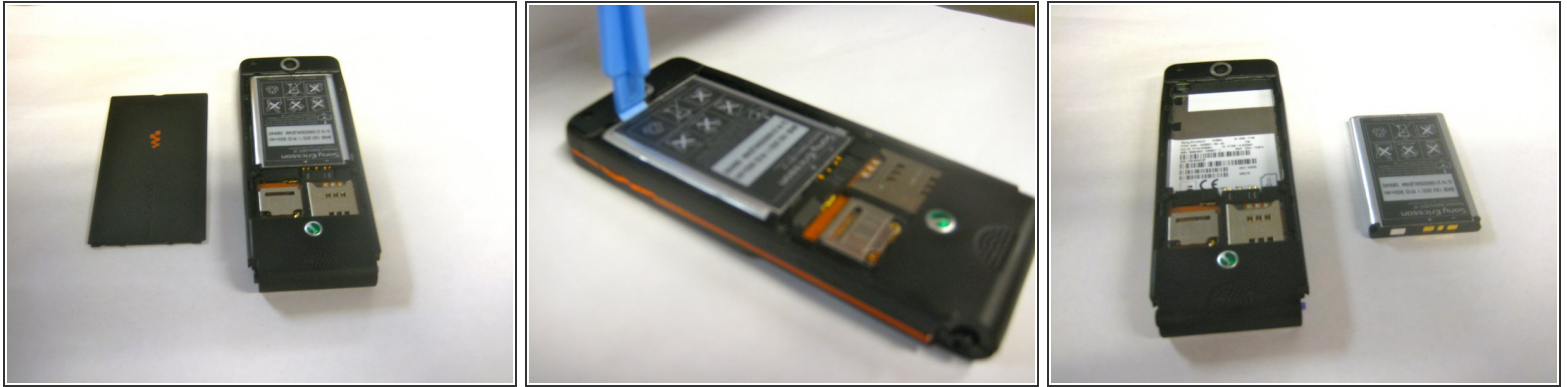
- [Pro Tech Toolkit](#) (1)
 - [iFixit Opening Tools](#) (1)
-

Step 1 — Battery



- Lie phone screen down on a flat smooth surface so that the camera, logos, and speaker face up.
- Using the provided notch on the bottom of the back cover, insert a plastic opening tool and lift upwards to remove the back cover of the phone.

Step 2



- Lie the cover beside the phone upon removal. Your assembly should appear as shown this far.
- Insert the plastic opening tool into the crevice between the camera and the battery of the phone. Using a gentle prying motion, lift the end of the battery and remove.
- After removal, recycle the defective battery appropriately. Take the replacement battery and lie it near the phone as shown. Your assembly should resemble the presented picture. Note that the cover is not included in this particular photo.

Step 3 — Speaker



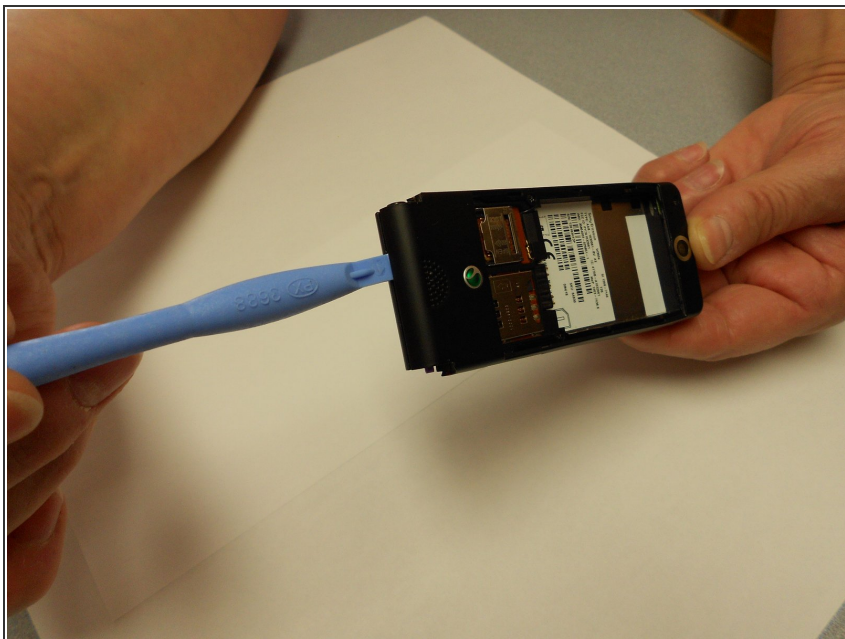
- Flip the phone over and remove the Sony Ericsson sticker that is over the phone's ear speaker.
- Using a T5 screwdriver, loosen and remove the two screws under the Sony Ericsson sticker by turning them counterclockwise.

Step 4



- Using a mini phillips head screwdriver, loosen and remove these screws by turning them counterclockwise.
- ⚠ Be careful to remember and organize screws to their unique positions in this step as well as future steps.

Step 5



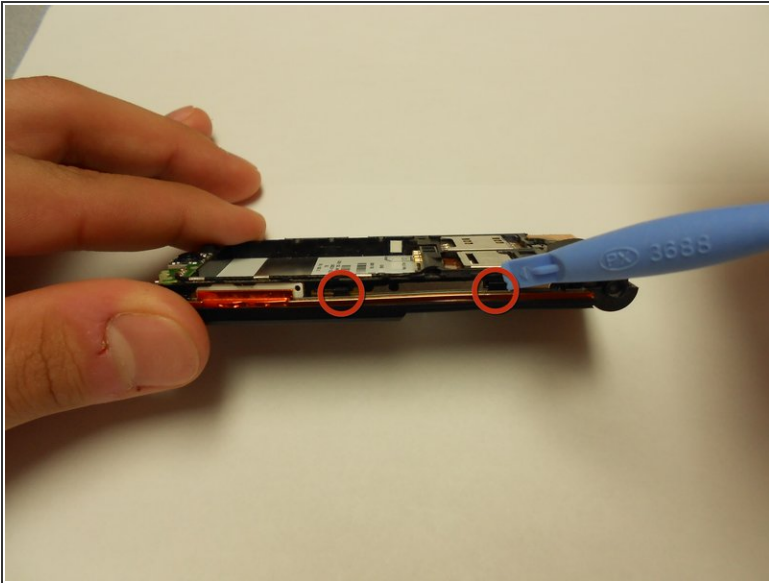
- Insert a prybar in bottom crack between the front and back plates (see picture) and use a gentle upward pull to separate the back case from the front case.
- ⚠ Side buttons/controls may fall from their place in between the back and front casings.

Step 6



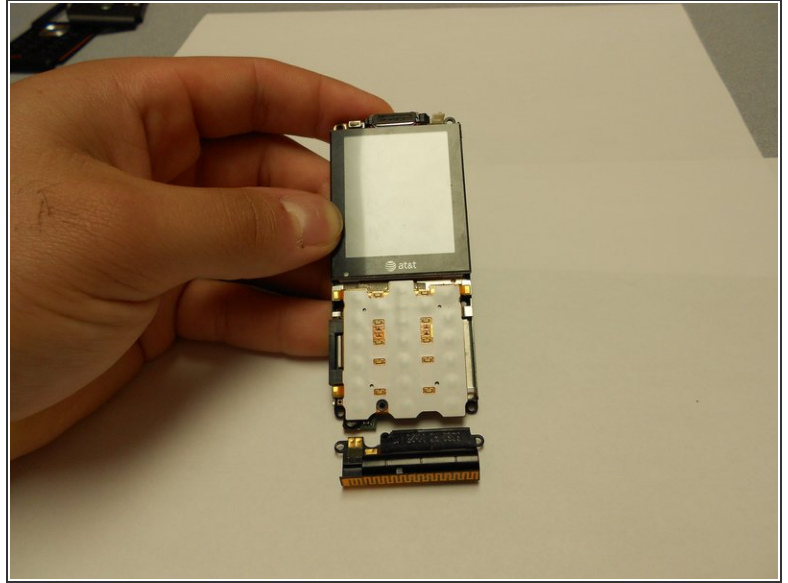
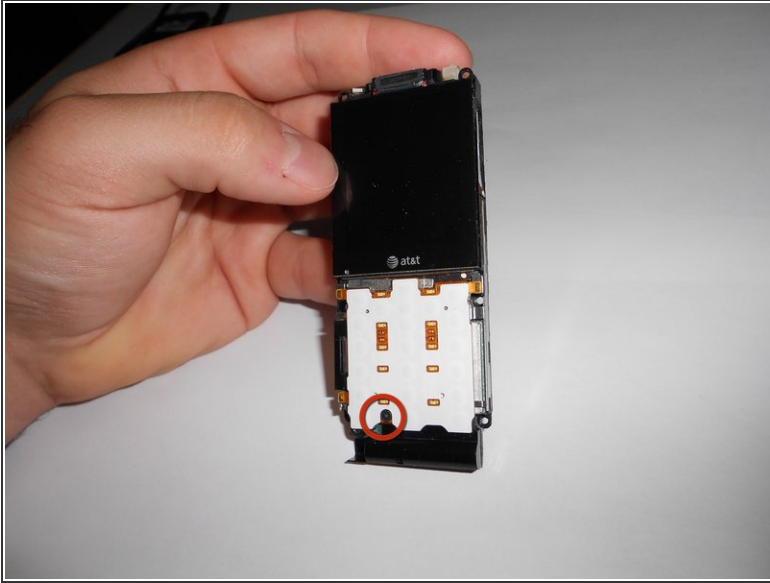
- Using a T5 screwdriver, loosen and remove the two screws by turning them counterclockwise.

Step 7



- Using a prybar and a gentle outward motion, separate the front plate from the inner phone workings.
- After removing the back plate and the front plate, the phone should look like the remaining pictures.

Step 8



- Using a mini phillips head screwdriver, loosen and remove the screw located on the front number pad by turning it counterclockwise.
- After removing this screw, the speaker will be free to move and the phone will look like this remaining picture.
- To reassemble the phone, follow these steps in reverse order.

To reassemble your device, follow these instructions in reverse order.