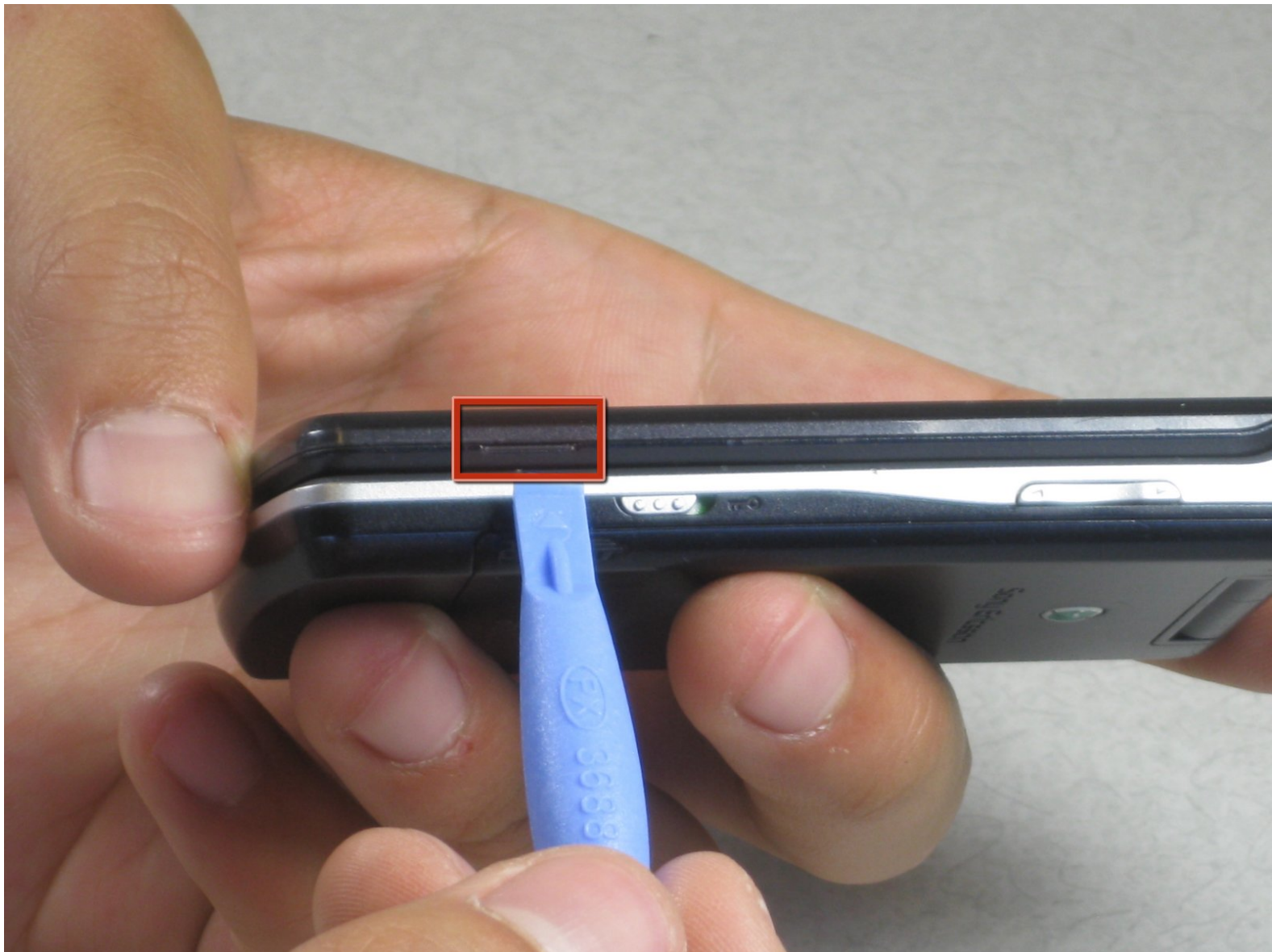




Sony Ericsson W518a Faceplate Replacement

How to remove the faceplate of the Sony Ericsson W518a.

Written By: kgkramer



INTRODUCTION

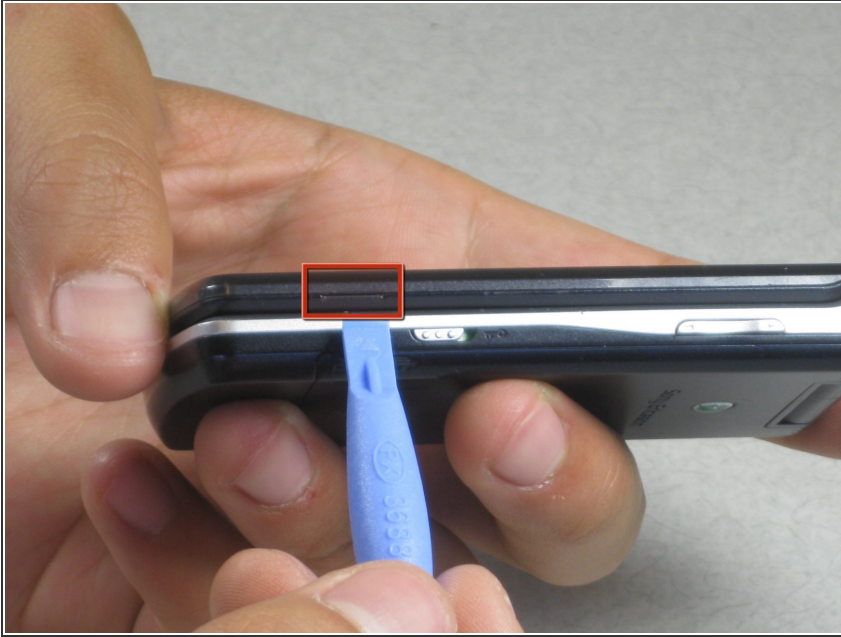
This guide demonstrates how to replace the the cell phone faceplate.



TOOLS:

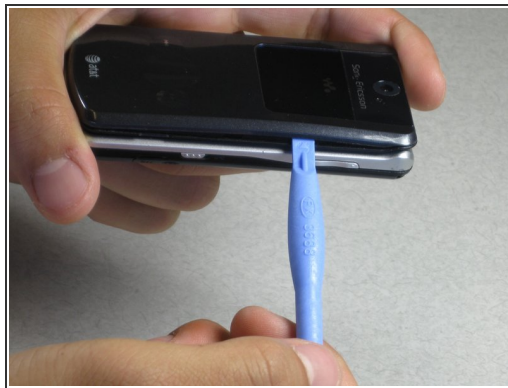
- [iFixit Opening Tools](#) (1)
-

Step 1 — Faceplate



- Find the small notch on the side of the phone. The notch is located by the "fast-forward" button and the "lock" switch.

Step 2



- Insert your plastic opening tool into the notch.
 - Pry off the faceplate by gently sliding the plastic opening tool around the phone while still keeping the tool under the edge of the phone.
 - When enough of the faceplate has been lifted it can be easily removed.
- ✦ In order to replace the faceplate, simply press and snap the faceplate back onto the front of the phone.

To reassemble your device, follow these instructions in reverse order.