



Sony Ericsson W810i Camera Lens Replacement

Written By: Ben Micucci



INTRODUCTION

This guide will show the user how to replace the Camera Lens



TOOLS:

- [Phillips #00 Screwdriver](#) (1)
 - [T6 Torx Screwdriver](#) (1)
 - [T7 Torx Screwdriver](#) (1)
 - [iFixit Opening Tools](#) (1)
-

Step 1 — Camera Lens



- Ensure the phone is switched off. Then press down firmly against the Cingular icon with your thumb.
- Slide the panel down and remove the latch

Step 2



- Lift the battery with your fingers and pull it out of the casing.
- Remove the SIM card as well if you have one

Step 3



- Remove the two outer screws using a T7 Torx screwdriver.

Step 4



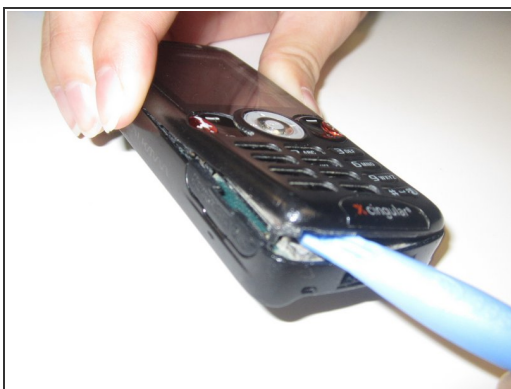
- Remove the two smaller inner screws with the Mini-Phillips screwdriver.

Step 5



- Remove the back faceplate on the camera side with the blue hand wedge.

Step 6



- Flip the phone over and pry off the front faceplate using multiple blue hand-wedges.
- Separate the keypad from the logic board by turning it upside down and allowing it to fall into your hand.

Step 7



- Remove the two remaining screws at the top corners of the phone.

Step 8



- Remove the logic board with multiple blue hand-wedges. Prise the logic board away carefully to avoid damaging it or snapping the wiring.

Step 9



- From the inside of the panel, press down on the camera lens to pop it out of its mounting.
- Replace the lens and reverse the process to reassemble the device.

To reassemble your device, follow these instructions in reverse order.