



Sony Ericsson W810i Charger Adapter Replacement

Replacing W810i Charger Adapter

Written By: Ben Micucci



INTRODUCTION

This guide will show the user how to replace the charger adapter for the W810i



TOOLS:

- [Phillips #00 Screwdriver](#) (1)
 - [iFixit Opening Tools](#) (1)
 - [T6 Torx Screwdriver](#) (1)
 - [T7 Torx Screwdriver](#) (1)
-

Step 1 — Charger Adapter



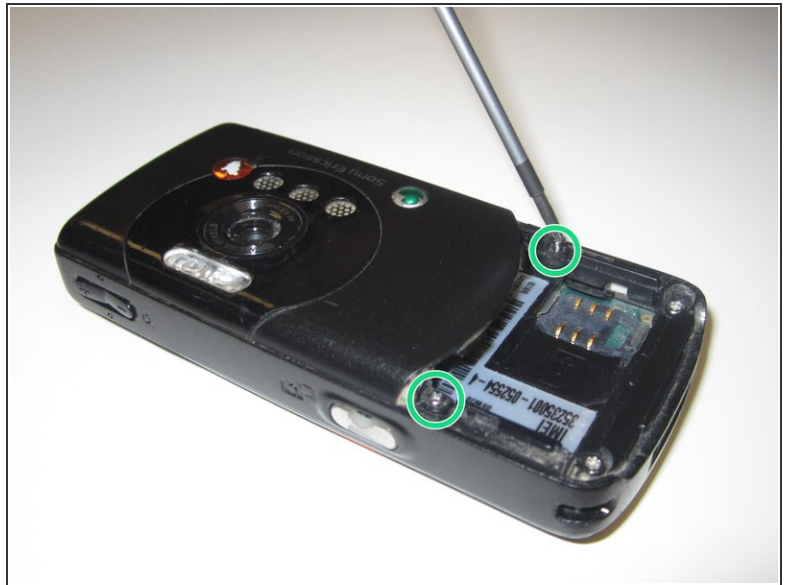
- Power the phone off.
- Press down firmly against the icon on the lower rear panel with your thumb.
- Slide the panel down to remove it.

Step 2



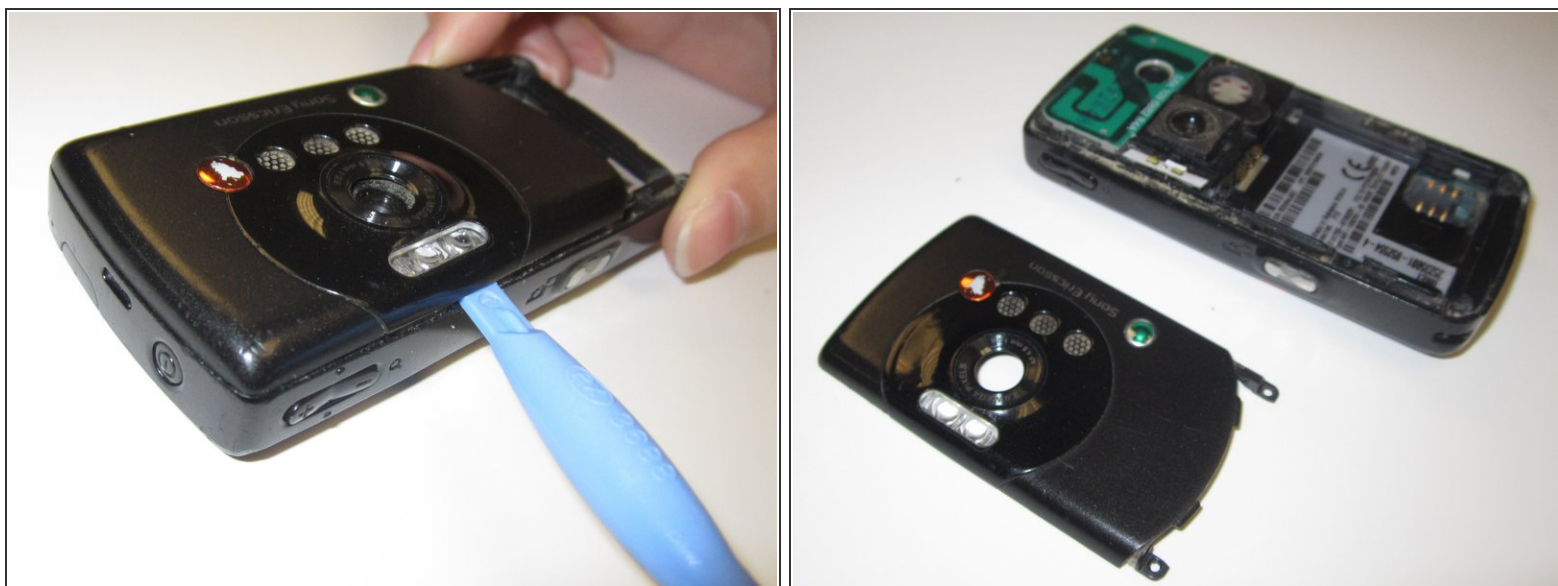
- Lift the battery and pull it out.
- Remove the SIM card too if you have one.

Step 3



- Remove the following screws:
 - Two T7 Torx screws
 - Two Phillips #00 screws

Step 4



- Use an opening tool to remove the camera faceplate.

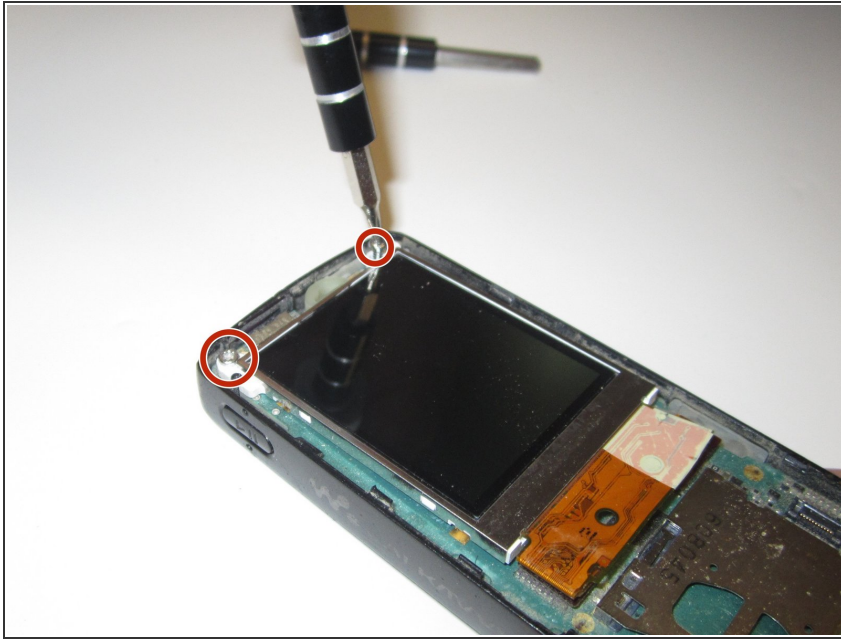
⚠ Be careful to not bend the camera faceplate when removing it.

Step 5



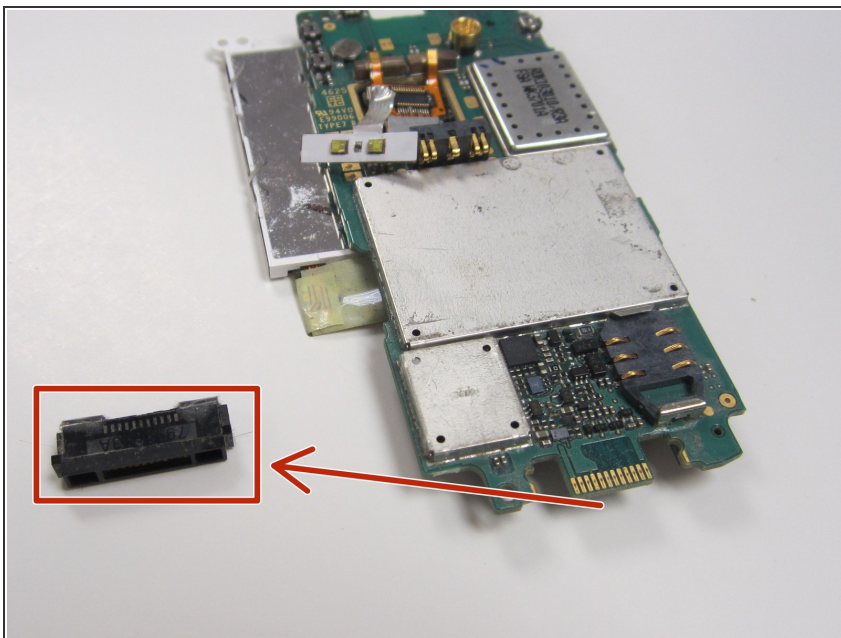
- Flip the phone over and use an opening tool to pry off the number pad.
- Separate the keypad from the motherboard.

Step 6



- Remove two T6 Torx screws that secure the motherboard.
 - Use an opening tool to remove the motherboard. Pay attention to cables on the motherboard.
- ⚠ Do not pry too hard on the motherboard, as it can break under too much force.

Step 7



- Pull off charger adapter and remove it.
- ⚠ Pull evenly on the full width of the cable so that no individual wires are overly strained.

To reassemble your device, follow these instructions in reverse order.