



# Sony Ericsson W810i Keypad Replacement

Remove the W810i keypad from the W810i cellular phone

Written By: Ben Micucci



# INTRODUCTION

This guide will show the user how to remove the keypad



## TOOLS:

- [Phillips #00 Screwdriver](#) (1)
  - [T6 Torx Screwdriver](#) (1)
  - [T7 Torx Screwdriver](#) (1)
  - [iFixit Opening Tools](#) (1)
-

## Step 1 — Keypad



- Make sure phone is off, and press down firmly against the Cingular icon with your thumb
- Slide the panel down and remove latch

## Step 2



- Lift and Pull battery out
- Remove the SIM card too if you have one



### Step 3



- Remove the two outer screws using a T-7 head for a screwdriver

### Step 4



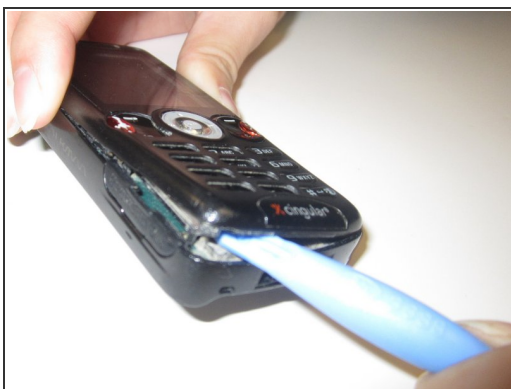
- Remove the two smaller inner screws with the Mini-Phillips screwdriver head

## Step 5



- Remove the Back (camera side) Faceplate with the blue hand-wedge

## Step 6



- Flip phone over and pry off the Front (Keypad side) Faceplate with multiple blue hand-wedges
- Separate keypad from logic board by turning it upside down and allowing it to fall off

To reassemble your device, follow these instructions in reverse order.