



Sony Ericsson W810i Logic Board Replacement

Written By: Ben Micucci



INTRODUCTION

This guide will show the user how to remove the W810i Logic Board



TOOLS:

- [Phillips #00 Screwdriver](#) (1)
 - [T6 Torx Screwdriver](#) (1)
 - [T7 Torx Screwdriver](#) (1)
 - [iFixit Opening Tools](#) (1)
-

Step 1 — Logic Board



- Make sure the phone is off and press down firmly against the Cingular icon with your thumb
- Slide the panel down and remove latch

Step 2



- Lift and pull battery out
- Remove the SIM card if you have one

Step 3



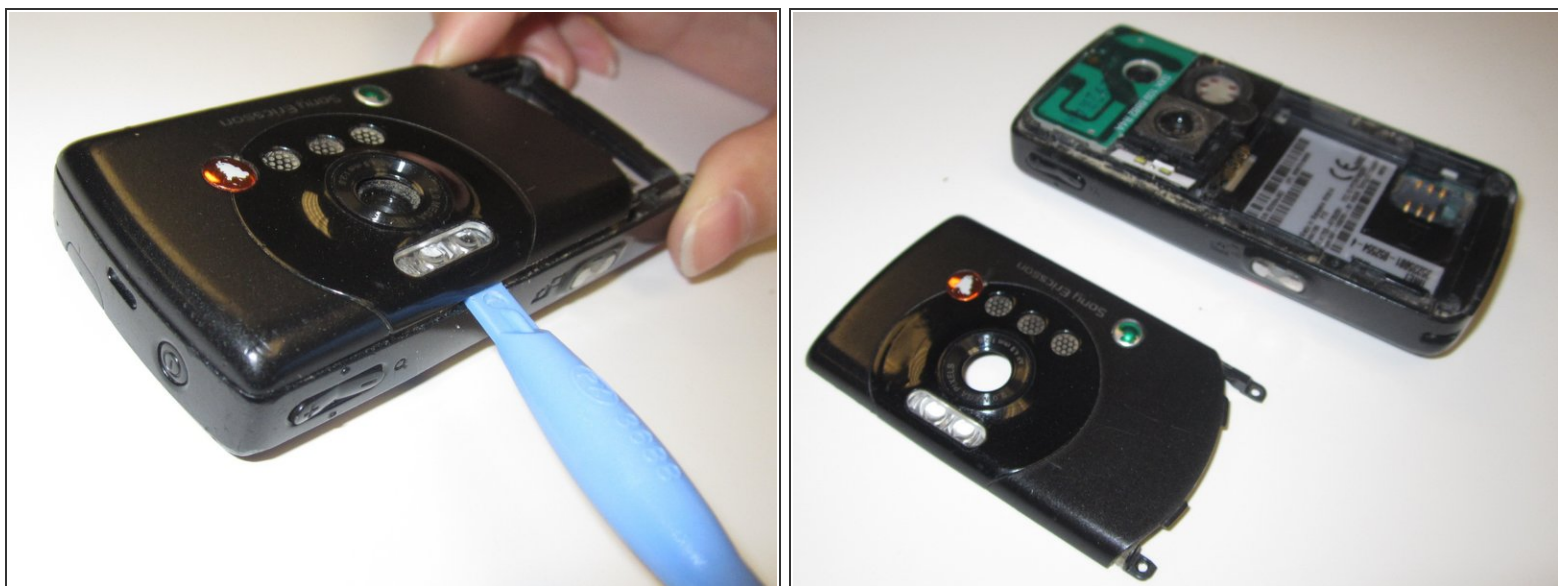
- Remove the two outer screws using a T-7 head for a screwdriver

Step 4



- Remove the two smaller inner screws with the Mini-Phillips screwdriver head

Step 5



- Remove the Back (camera side) Faceplate with the blue hand-wedge

Step 6



- Flip the phone over and pry off the front (keypad side) faceplate with multiple blue hand-wedges
- Separate keypad from logic board by turning it upside down and allowing it to fall off

Step 7



- Remove the two remaining screws in the top corners of the phone using a T-6 screwdriver head
- Remove the logic board with multiple blue hand-wedges, be careful not to snap the logic board in half, along with snapping the wiring from the logic board

To reassemble your device, follow these instructions in reverse order.