



Sony Ericsson Xperia Play Battery Replacement

How to Replace the Device's Battery

Written By: Pieter Boersma





TOOLS:

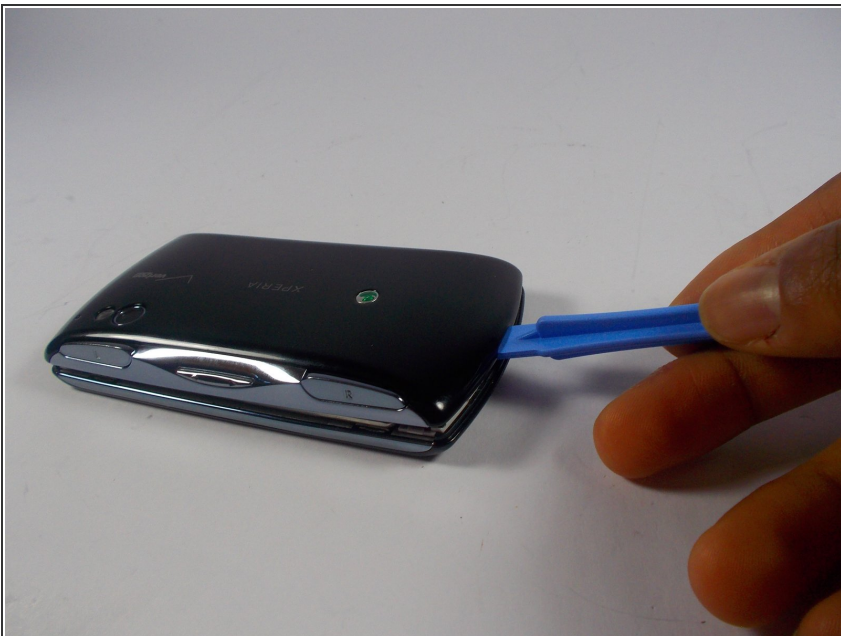
- [iFixit Opening Tools](#) (1)
-

Step 1 — Battery



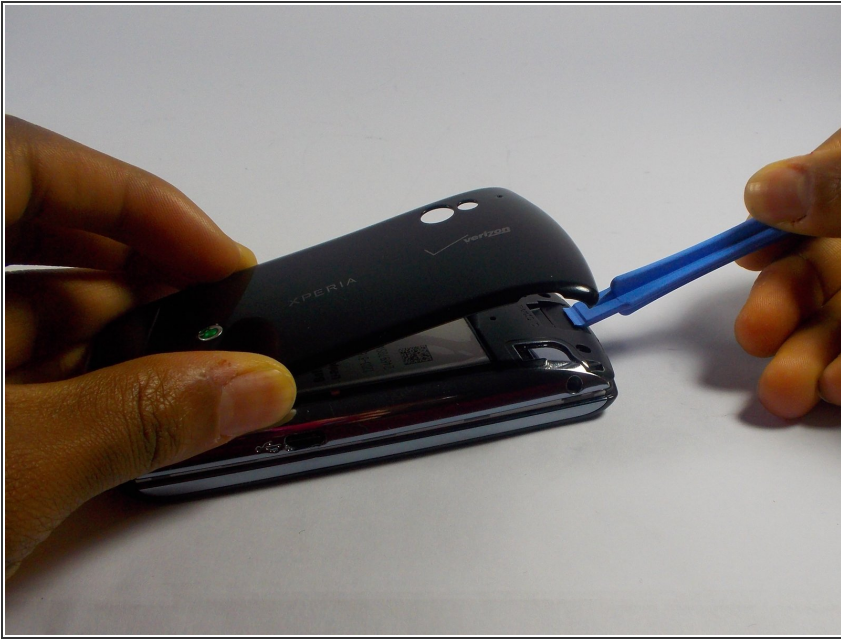
- Turn the phone around so the screen is facing a flat surface.

Step 2



- To remove the cover, use plastic removal tool on the seam of the case.
- Once enough force is applied, you should hear a “click” sound which indicates that cover is loose.

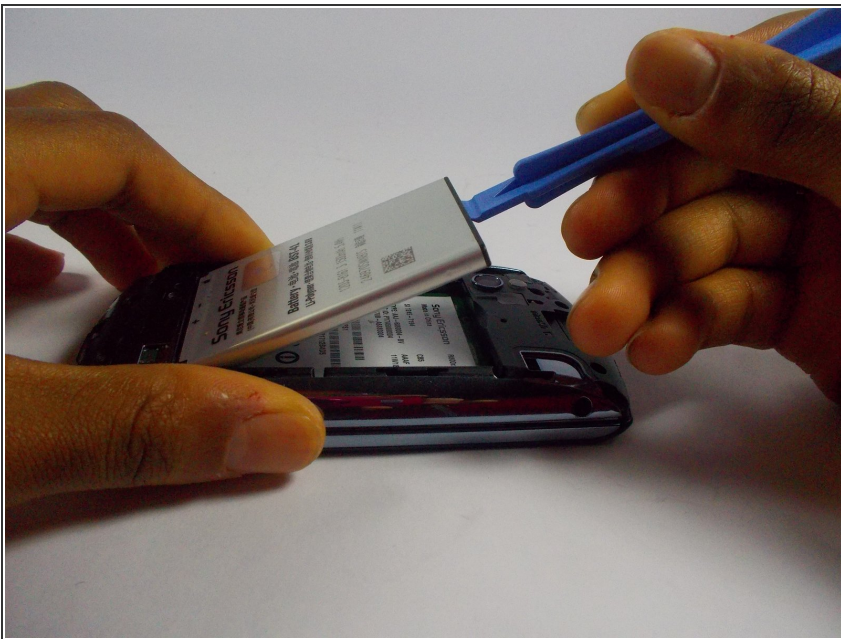
Step 3



- After the “click” noise, lift the cover with your finger.

⚠ Do not puncture the battery. This can result in a fire.

Step 4



- Proceed with removing the battery by lifting the battery with a small plastic pry tool.

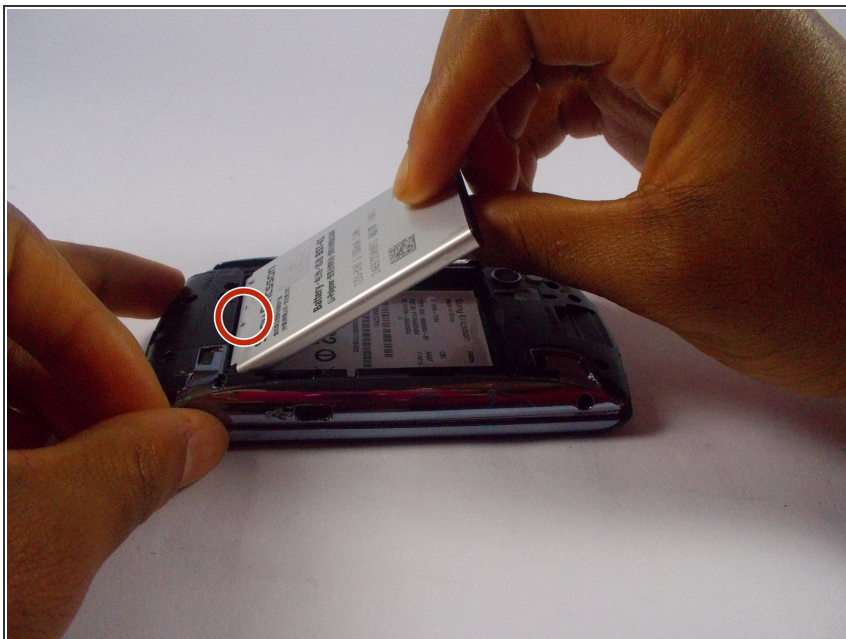
⚠ Use a plastic tool for safety. If a plastic tool is not available use your fingers.

Step 5



- Remove the battery from the device.

Step 6



- Once the old battery is removed, slide the new battery, with the positive/negative indicator facing up, in so that the contacts of the battery make contact with the contacts of the phone.

Step 7



- Lightly press the battery into the phone so that it is secure.

Step 8



- To put the cover back on, apply force until a "click" sound is heard.

To reassemble your device, follow these instructions in reverse order.