



Sony Ericsson Xperia Play Main Flex Cable Replacement

Written By: ZFix



INTRODUCTION

How to change the Main Flex / Ribbon cable.

[Please SUBSCRIBE to my channel ツ](#)

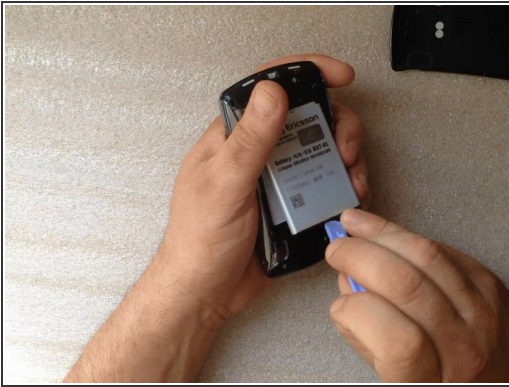
[video: <http://youtu.be/UPH9u2nY6dA>]



TOOLS:

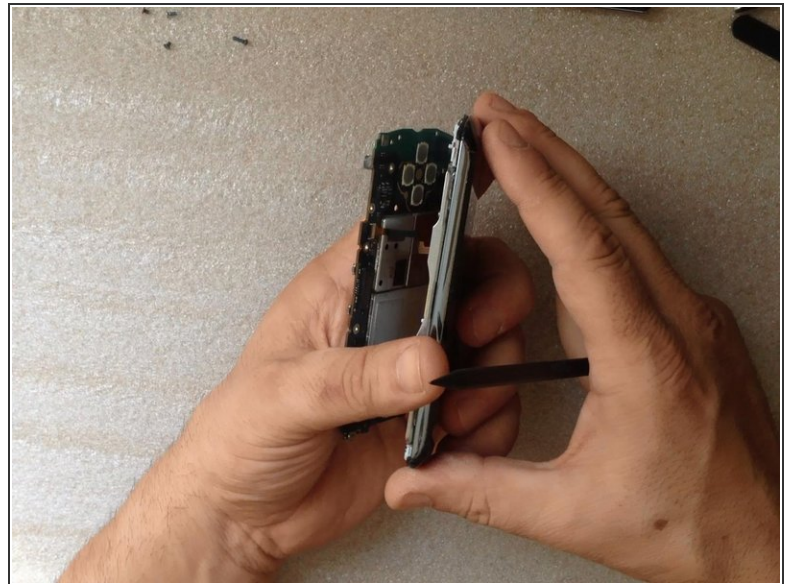
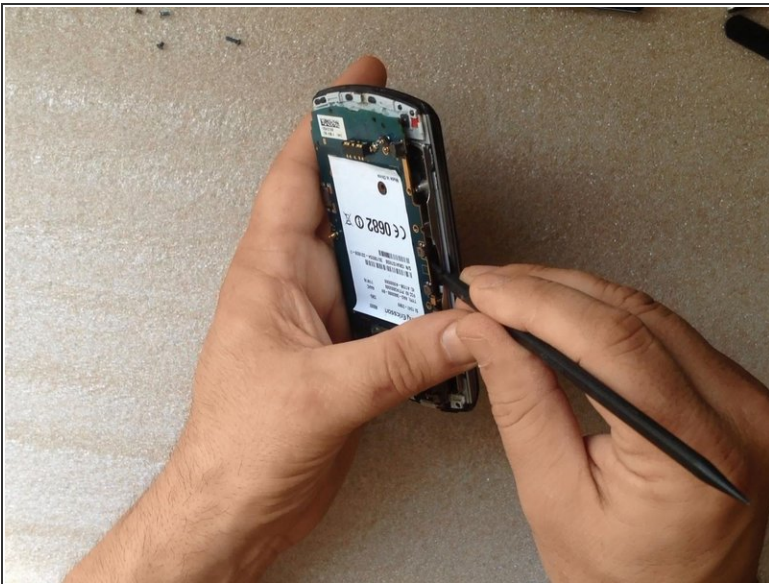
- [Phillips #0 Screwdriver](#) (1)
 - [T5 Torx Screwdriver](#) (1)
 - [Tweezers](#) (1)
-

Step 1 — Main Flex Ribbon Cable



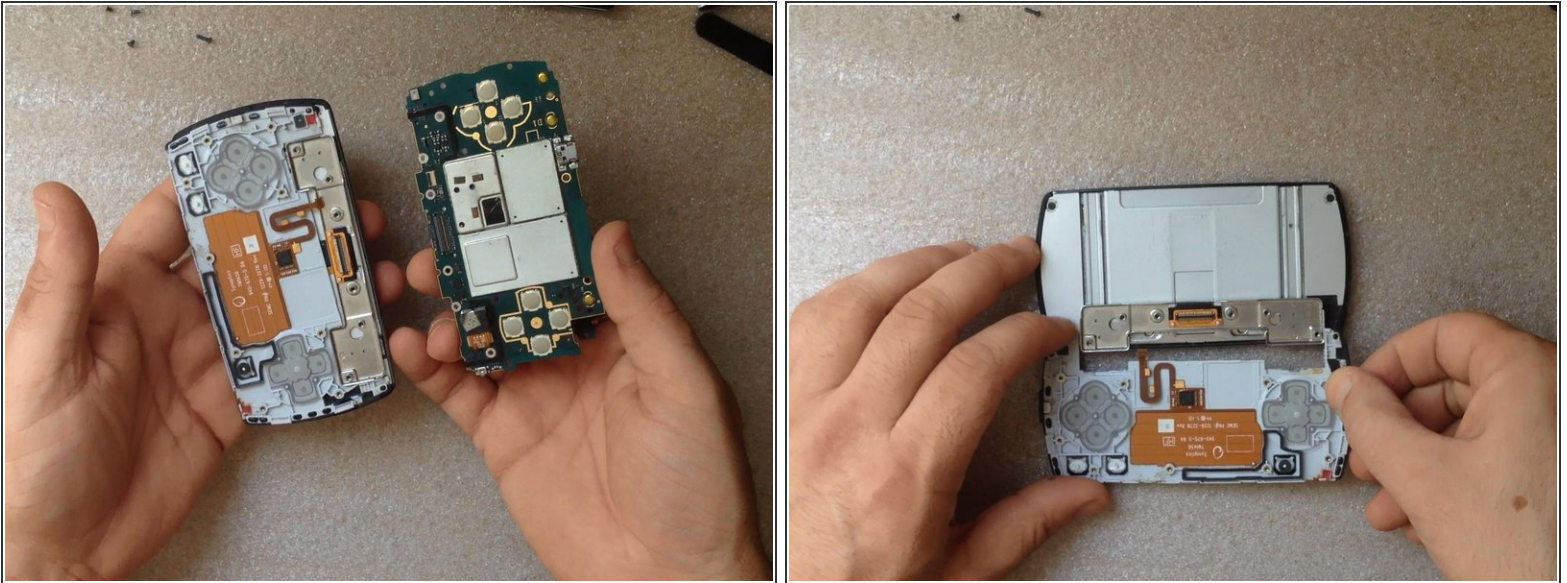
- Remove the battery cover and the battery.
- You have 6x silver screw and 7x black screw and remove the rear bezel.

Step 2



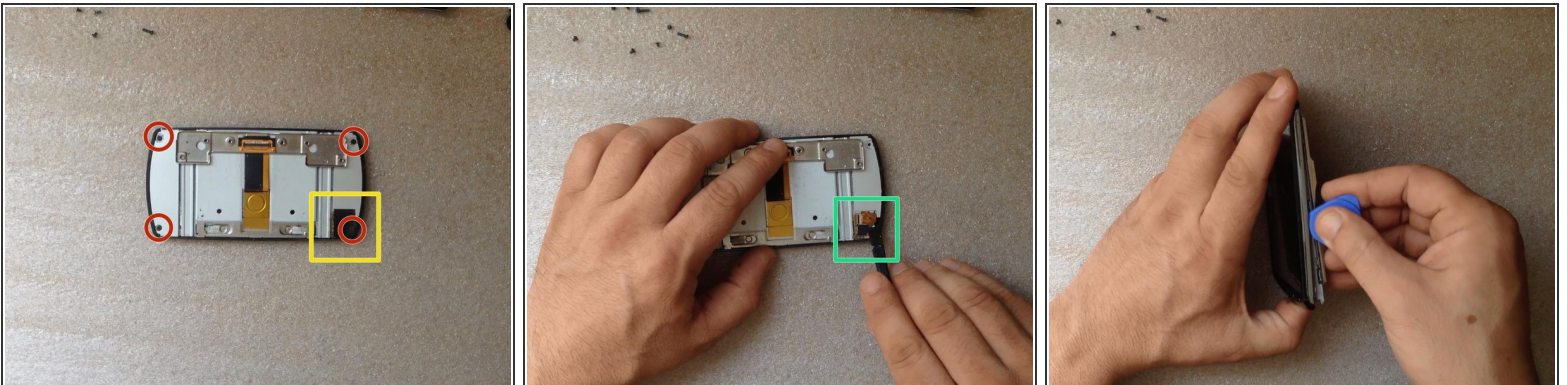
- Now with a **plastic tool** disconnect the main flex cable. Be careful, near to the main flex cable connector there is many small elements.
- Disconnect the gaming keyboard flex keyboard.

Step 3



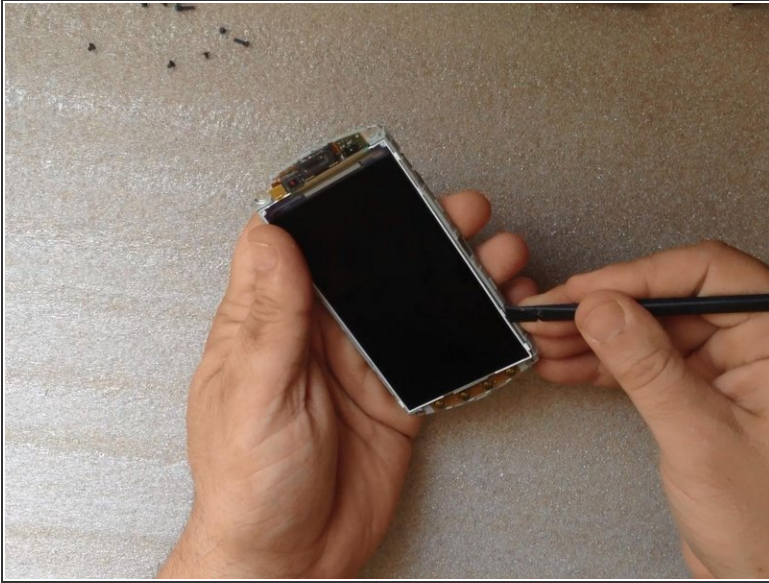
- Remove the motherboard and the gaming keyboard.

Step 4



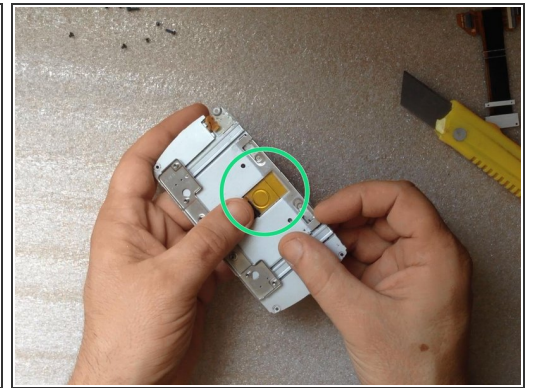
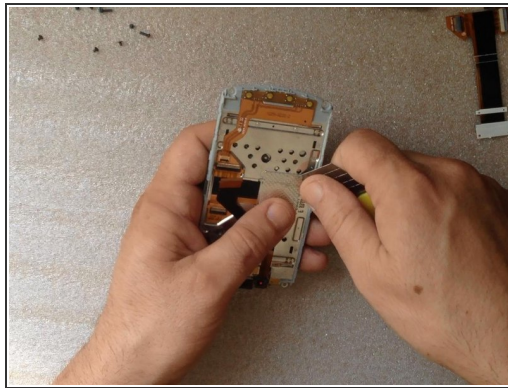
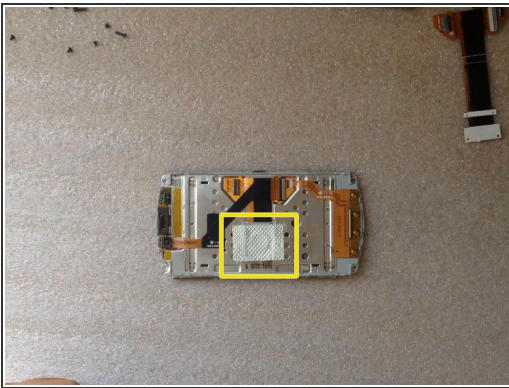
- Unscrew the 4x screws.
- Remove the black sticker.
- Disconnect the touchscreen flex cable connector.
- Now you can disassemble the front bezel.

Step 5



- Use the thin end of a plastic tool to remove LCD Display and disconnect the flex cable.

Step 6



- To release the ribbon cable peel off two patches.

Step 7



- Now remove the small metal plate taped to the flex cable.
- Remove the plastic plate from the back side of the flex cable connector.

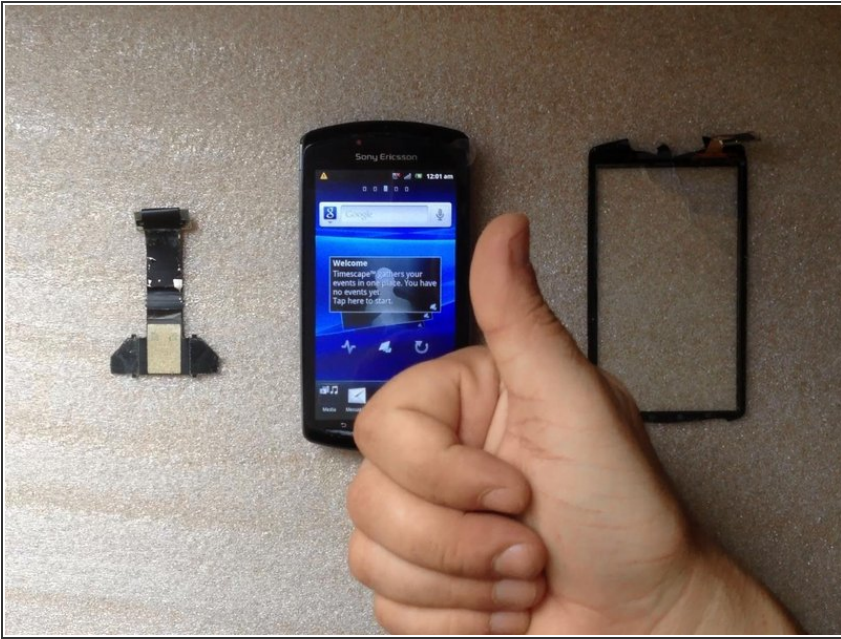
⚠ Bend the cable at an angle so you can push it down through the hole.

Step 8



- Use the same technique when you are installing the new Main Ribbon Cable.
- I prefer to test the new spare part before the full assembly.

Step 9



- That's all.
 - .
 - Did you do it successfully?
- ☒ [Please SUBSCRIBE to my channel ツ](#)

To reassemble your device, follow these instructions in reverse order.