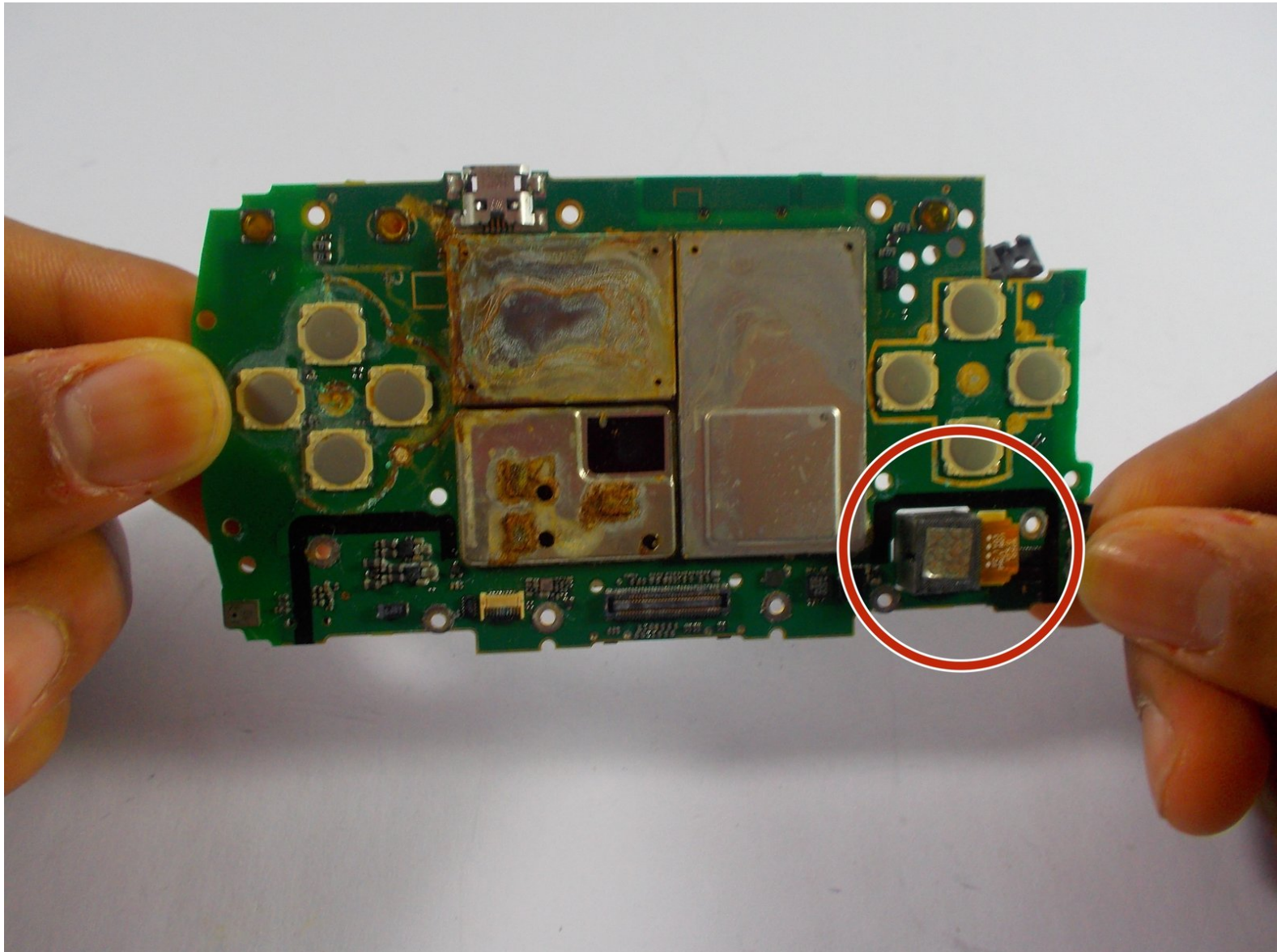




Sony Ericsson Xperia Play Rear Facing Camera Replacement

How to replace the camera on you device.

Written By: Pieter Boersma

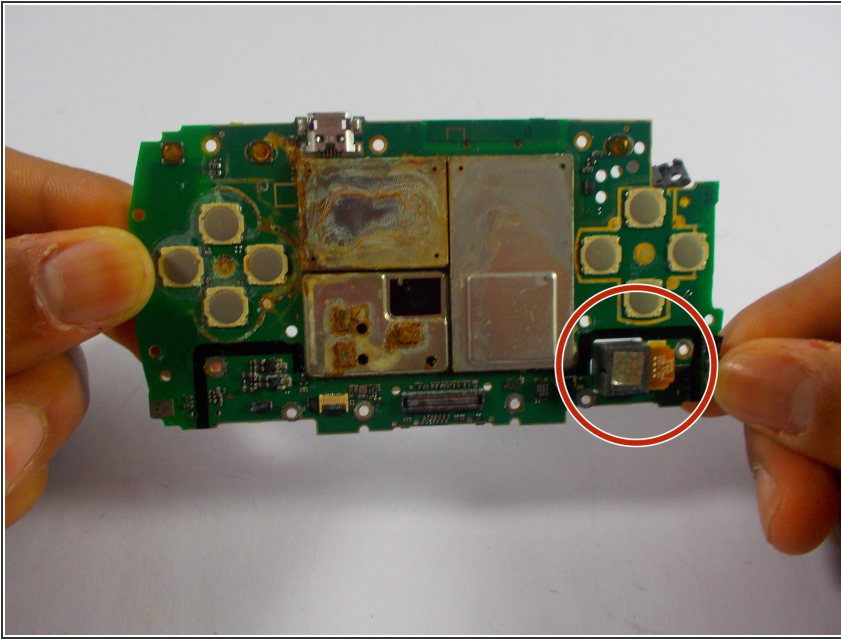




TOOLS:

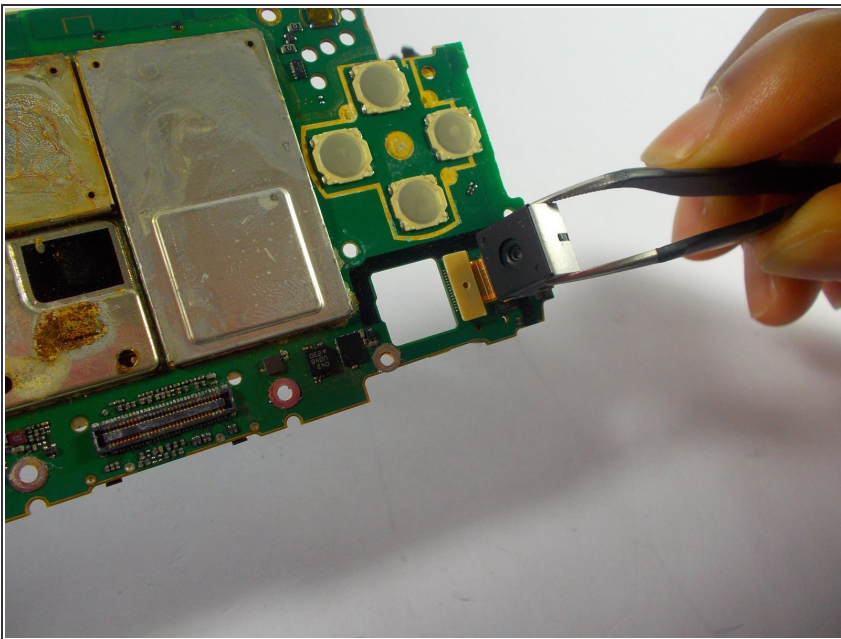
- [Phillips #00 Screwdriver](#) (1)
 - [iFixit Opening Tools](#) (1)
 - [Tweezers](#) (1)
-

Step 1 — Rear Facing Camera



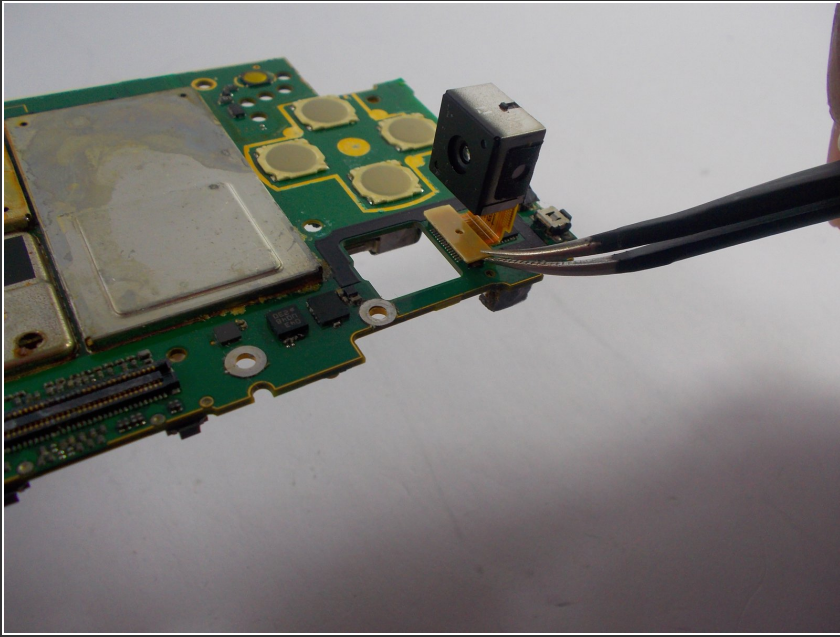
- Follow the Prerequisite Guide on how to Remove the Controller Plate/Buttons to prepare the phone for disassembly. Stop when the motherboard has been detached.
- Orientate the motherboard so that the camera faces away, as shown in the picture.

Step 2



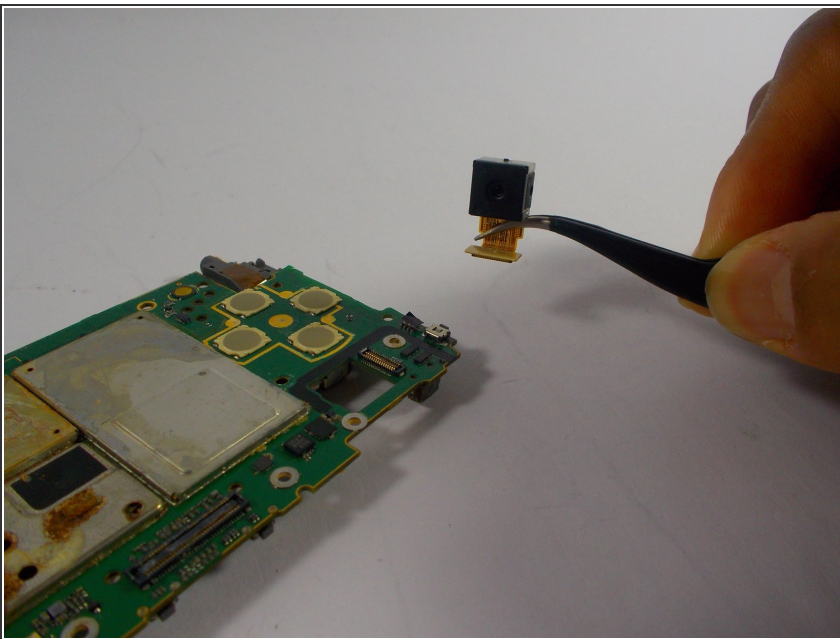
- With the camera facing away, pull it from the motherboard until it stands perpendicular to the board. Tweezers can be used to do this.

Step 3



- Use tweezers to pull the camera off of the motherboard. Hold on to the plastic connector and apply the force away from the board.

Step 4



- The camera is now detached.

To reassemble your device, follow these instructions in reverse order.