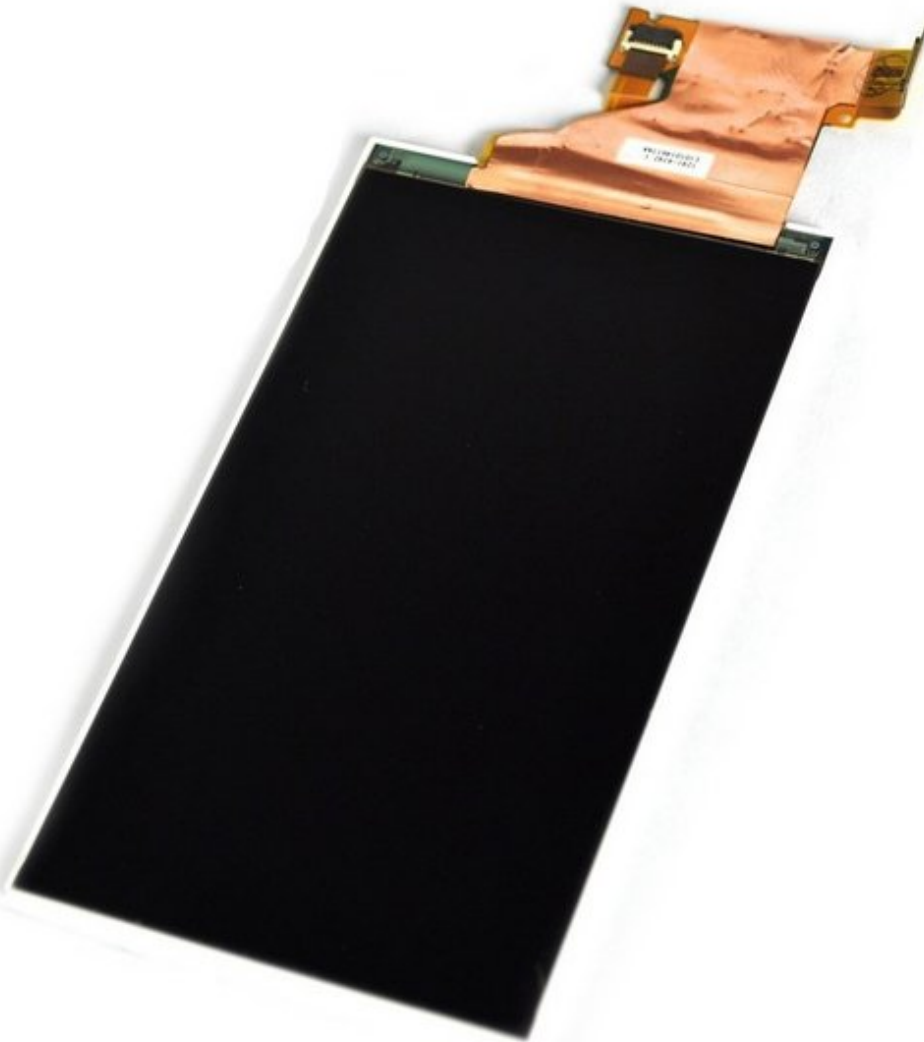




Sony Ericsson Xperia X10 LCD Display Replacement

Sony Ericsson Xperia X10 LCD Display Replacement

Written By: ZFix



INTRODUCTION

How to disassemble the phone and replace LCD Display.

[Please SUBSCRIBE to my channel ツ](#)

[video: <http://youtu.be/3UUVbdWmeUU>]



TOOLS:

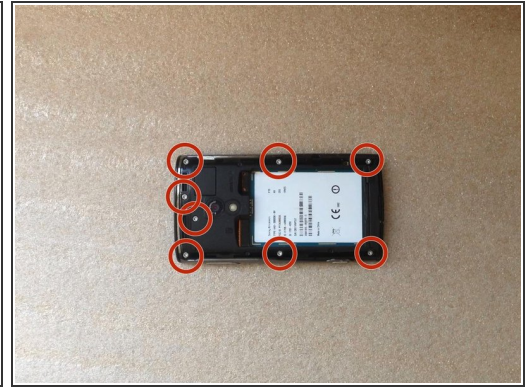
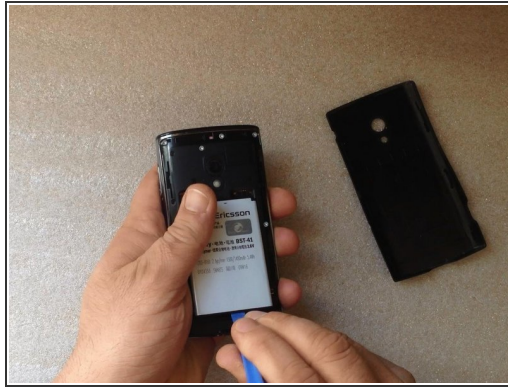
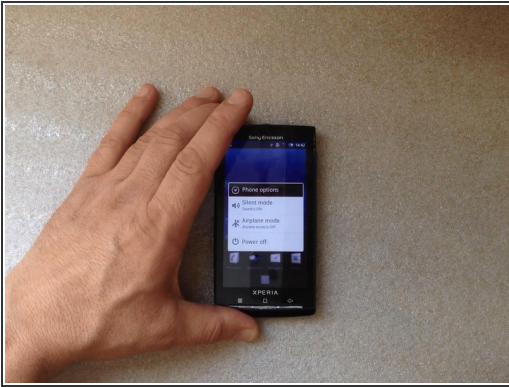
- [iFixit Opening Tools](#) (1)
- [Spudger](#) (1)
- [T5 Torx Screwdriver](#) (1)
- [Tweezers](#) (1)



PARTS:

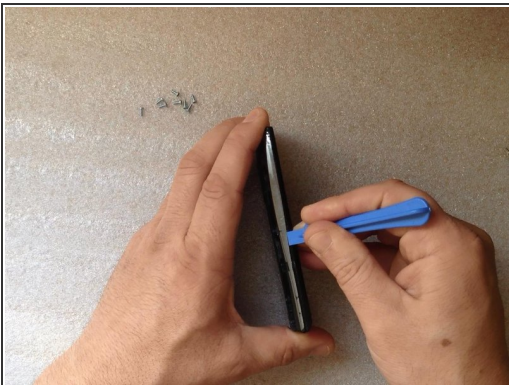
- [Sony Xperia X10 LCD Display](#) (1)

Step 1 — Logic Board



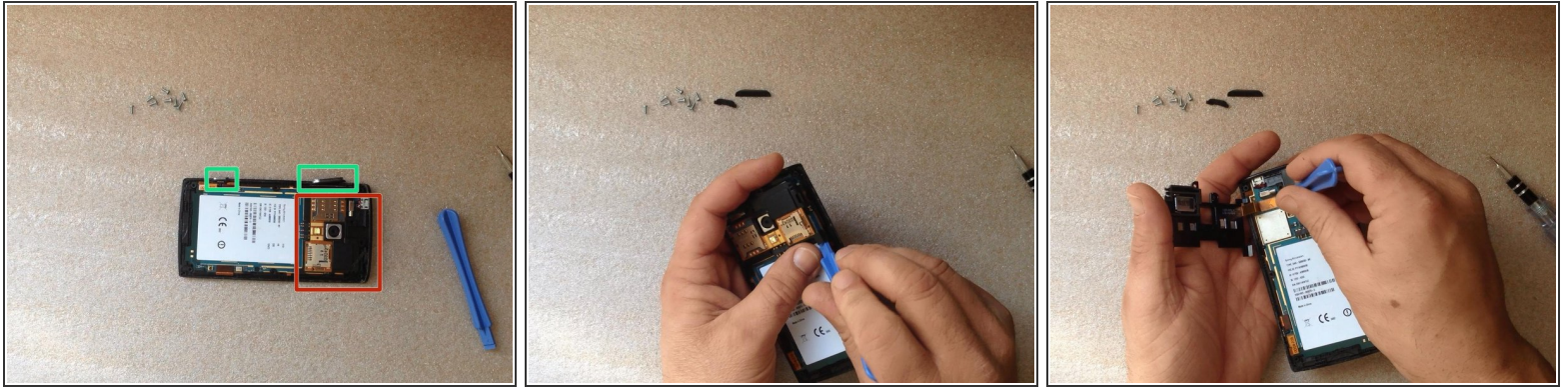
- Switch-off the phone.
- Remove the battery.
- Unscrew 8x T6 Torx screws.

Step 2



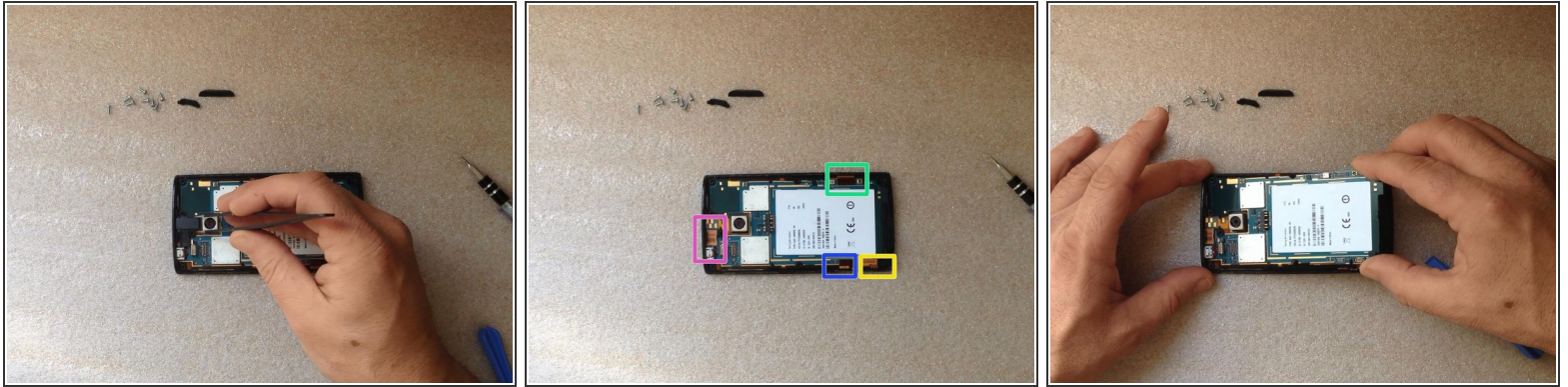
- Use a Plastic Pry or other plastic tool to unhook the back housing / bezel and remove it.
- Tip - try prying it open from the top and over to the side. It can be very tight if you are doing this for the first time. The volume rocker and camera button are not part of the housing, so try going around it.

Step 3



- Remove the Volume Up/Down and Camera buttons.
- Unhook the SIM & SD Card reader unit and disconnect the flex cable.

Step 4



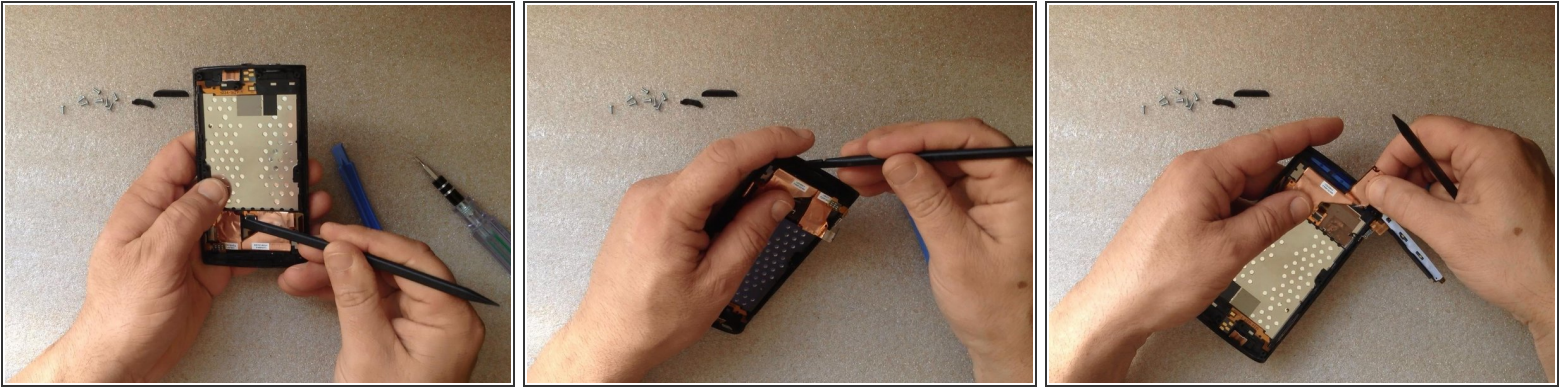
- Remove the Audio jack connector.
- Disconnect 4x flex cables:
 - LCD Display
 - Menu buttons
 - Touchscreen
 - Earpiece, Volume & Power On buttons

⚠ Carefully remove the mother board.



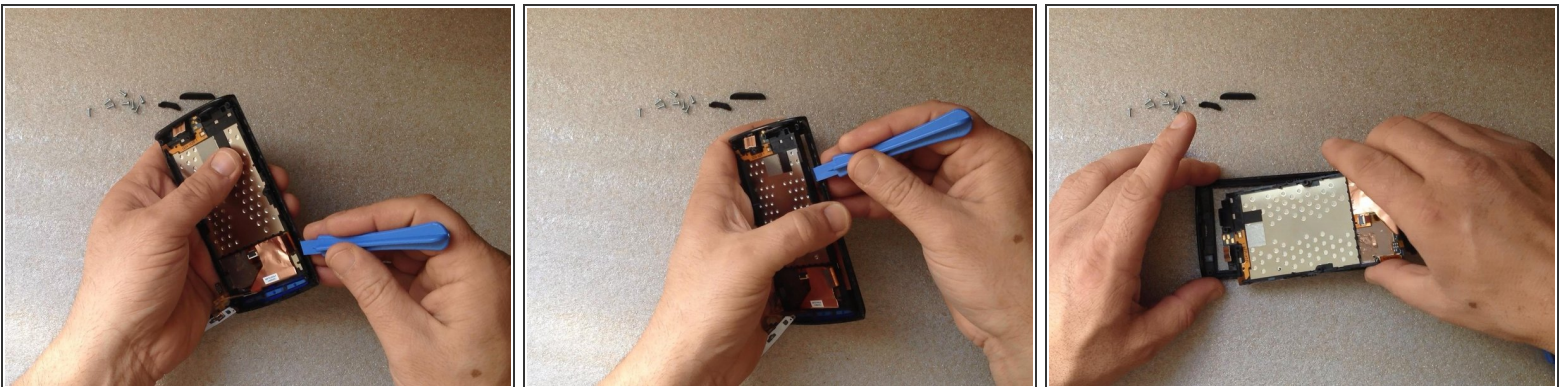
[Please SUBSCRIBE to my channel ツ](#)

Step 5 — LCD Display



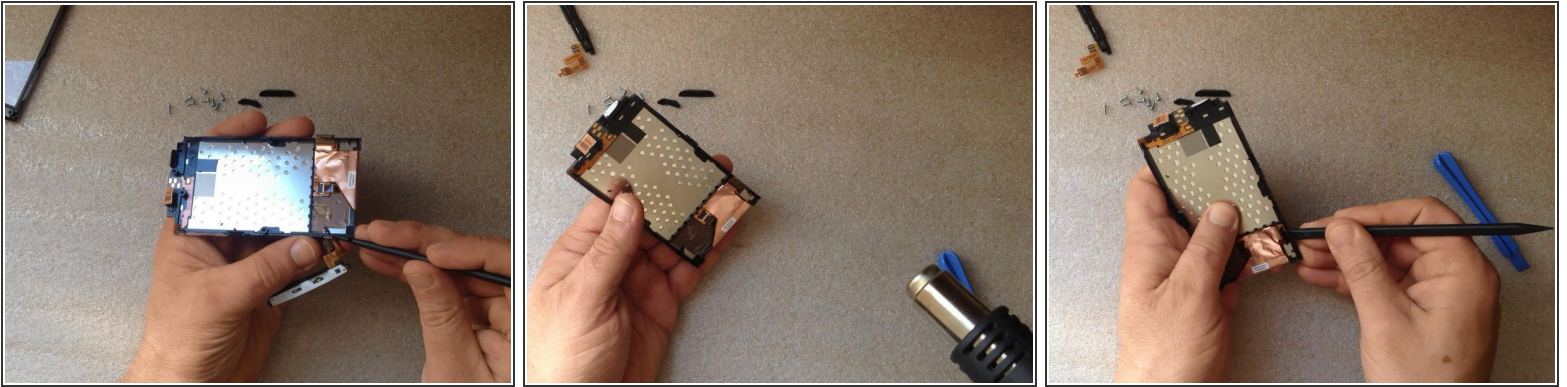
- Unstick the Touchscreen flex cable from the LCD Display Frame.
 - ⚠ Use only plastic tools for this operation to avoid damage to the cable.
 - ℹ You can use hot air to make the separation easier.
- Disassemble the Home buttons flex cable & Plastic Bracket to release the Touchscreen Flex cable.

Step 6



- Use a Plastic Pry or other plastic tool to separate the LCD Display with Frame from the Front Touchscreen Housing.
 - ⚠ Do this carefully.

Step 7



- Remove the Menu / Camera buttons flex cable.
- Use again hot air and carefully unstick the LCD Display flex cable from the frame.

Step 8



- Separate the LCD Display from the Metal Frame.



[Please SUBSCRIBE to my channel ツ](#)

To reassemble your device, follow these instructions in reverse order.