



# Sony Ericsson Xperia X10 Logic Board Replacement

How to disassemble the phone and replace the Logic board.

Written By: ZFix



## INTRODUCTION

Use this guide to replace a defective Logic Board.

[Please SUBSCRIBE to my channel ツ](#)

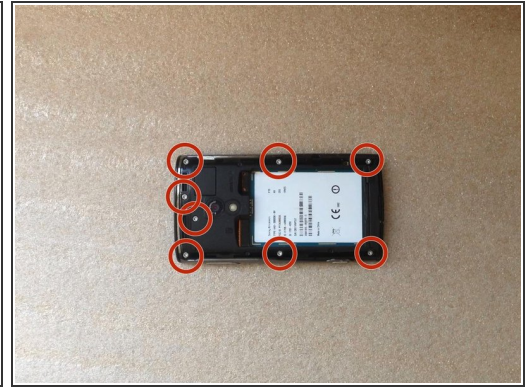
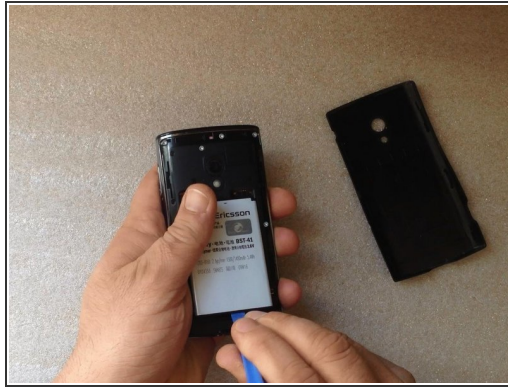
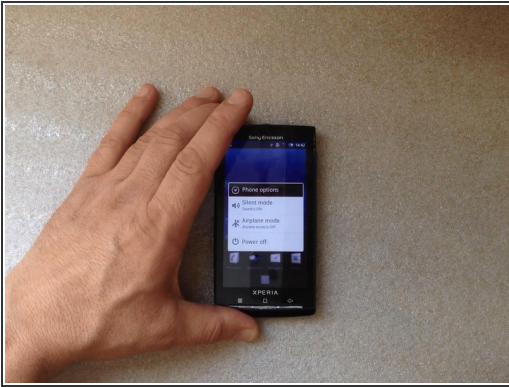
[video: <http://youtu.be/3UUVbdWmeUU>]



### TOOLS:

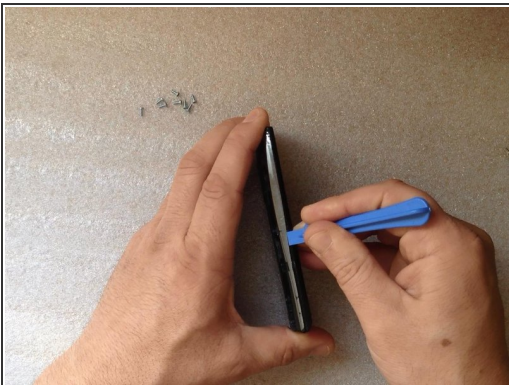
- [T5 Torx Screwdriver](#) (1)
  - [iFixit Opening Tools](#) (1)
  - [Spudger](#) (1)
  - [Tweezers](#) (1)
-

## Step 1 — Logic Board



- Switch-off the phone.
- Remove the battery.
- Unscrew 8x T6 Torx screws.

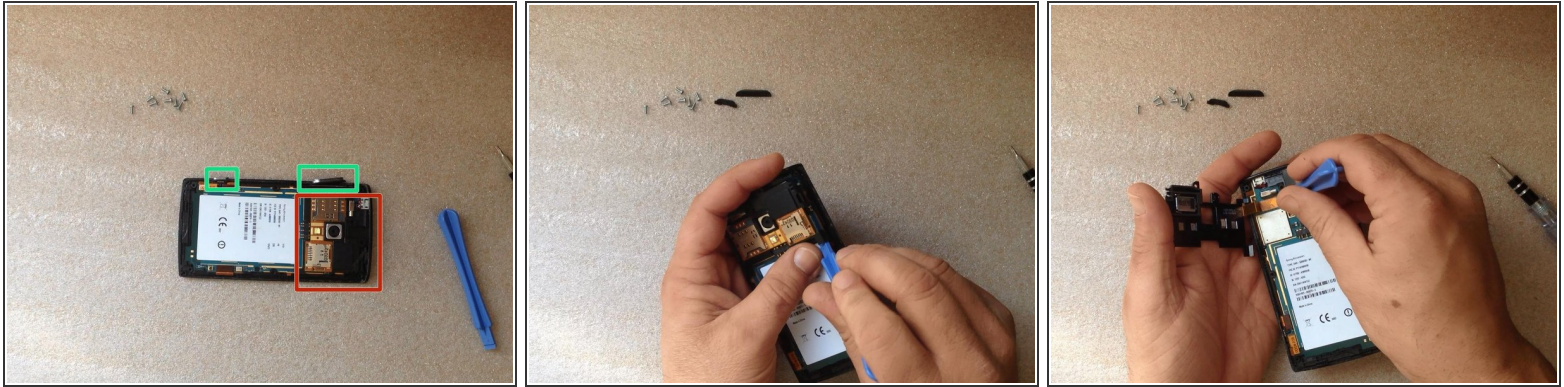
## Step 2



- Use a Plastic Pry or other plastic tool to unhook the back housing / bezel and remove it.
- Tip - try prying it open from the top and over to the side. It can be very tight if you are doing this for the first time. The volume rocker and camera button are not part of the housing, so try going around it.

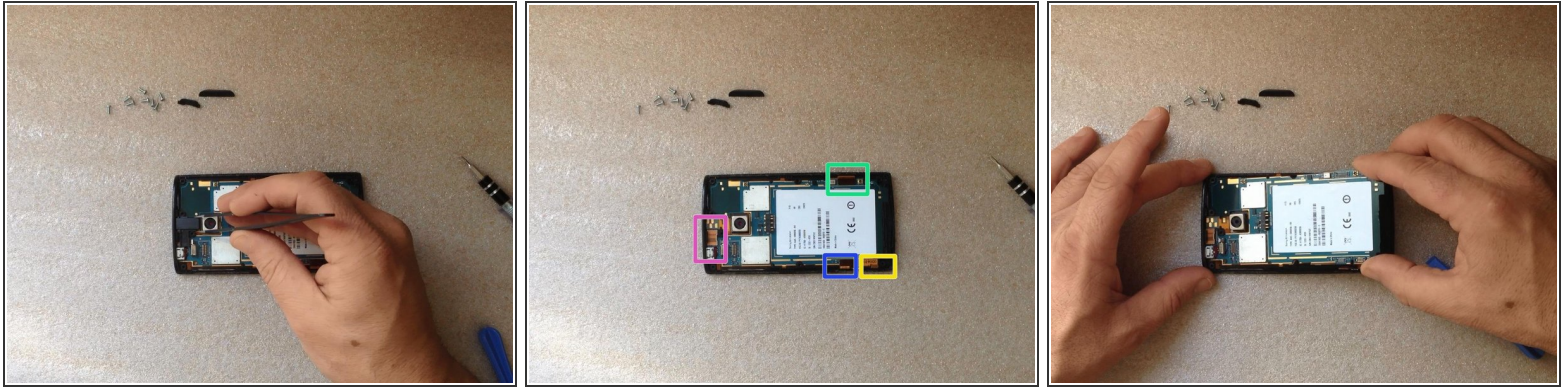


## Step 3



- Remove the Volume Up/Down and Camera buttons.
- Unhook the SIM & SD Card reader unit and disconnect the flex cable.

## Step 4



- Remove the Audio jack connector.
- Disconnect 4x flex cables:
  - LCD Display
  - Menu buttons
  - Touchscreen
  - Earpiece, Volume & Power On buttons

⚠ Carefully remove the mother board.

📌 [Please SUBSCRIBE to my channel ツ](#)

To reassemble your device, follow these instructions in reverse order.